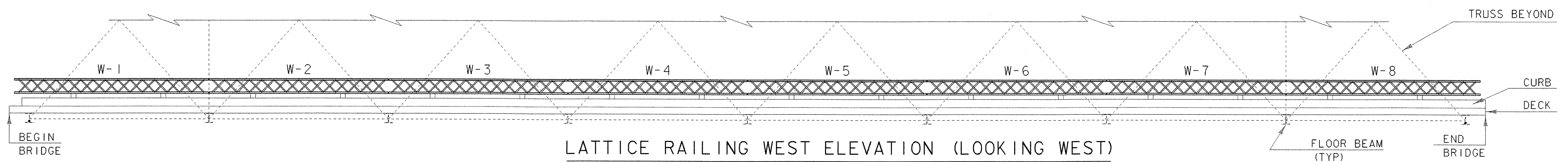


LATTICE RAILING EAST ELEVATION (LOOKING EAST)

SCALE 3/16" = 1'-0" (UP STREAM)

NOTE:
LATTICE DIMENSIONS AND LOCATIONS
ARE TYPICAL FOR BOTH SIDES OF BRIDGE



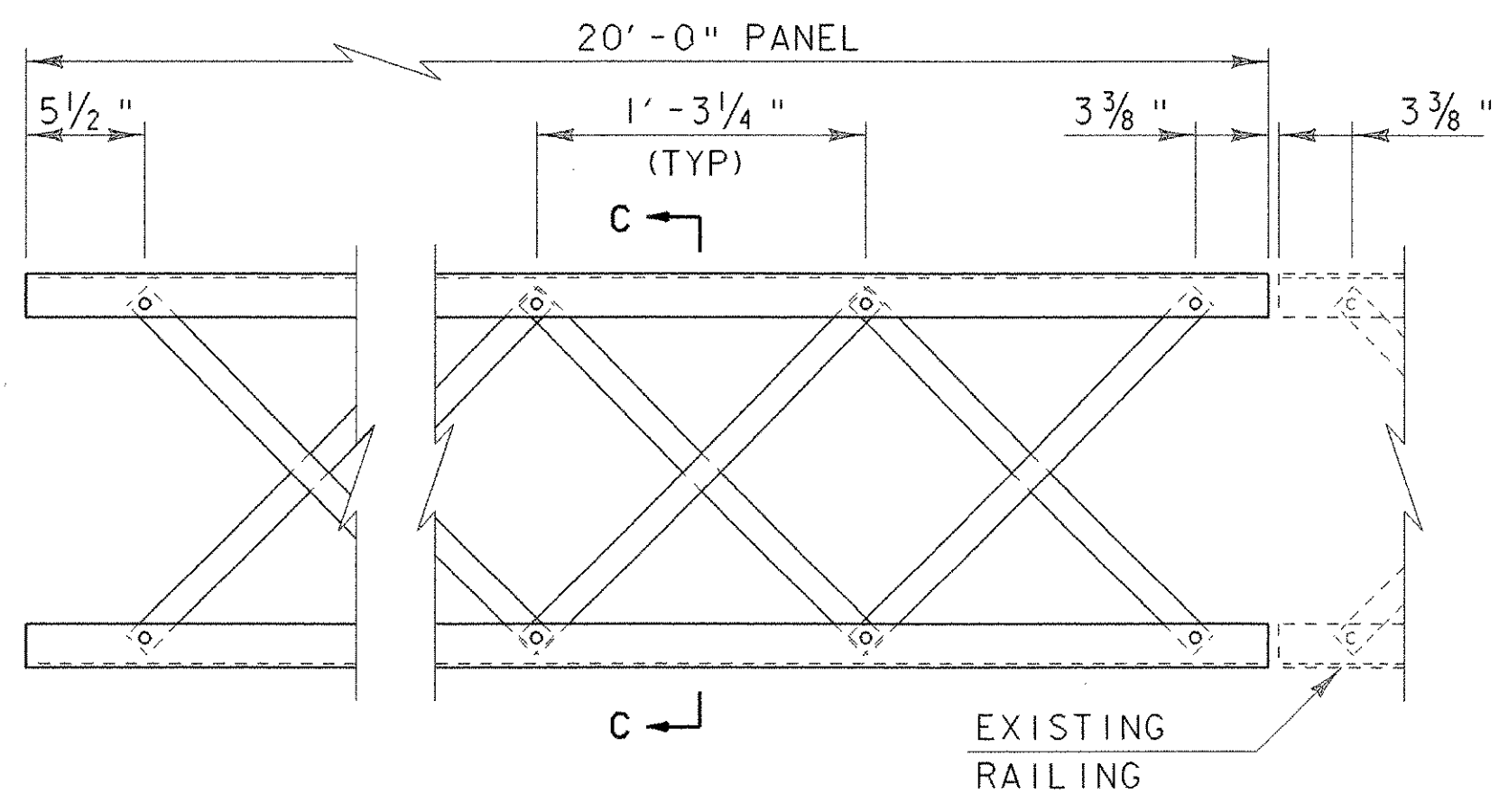
LATTICE RAILING WEST ELEVATION (LOOKING WEST)

SCALE 3/16" = 1'-0" (DOWN STREAM)

LATTICE RAILING NOTES:

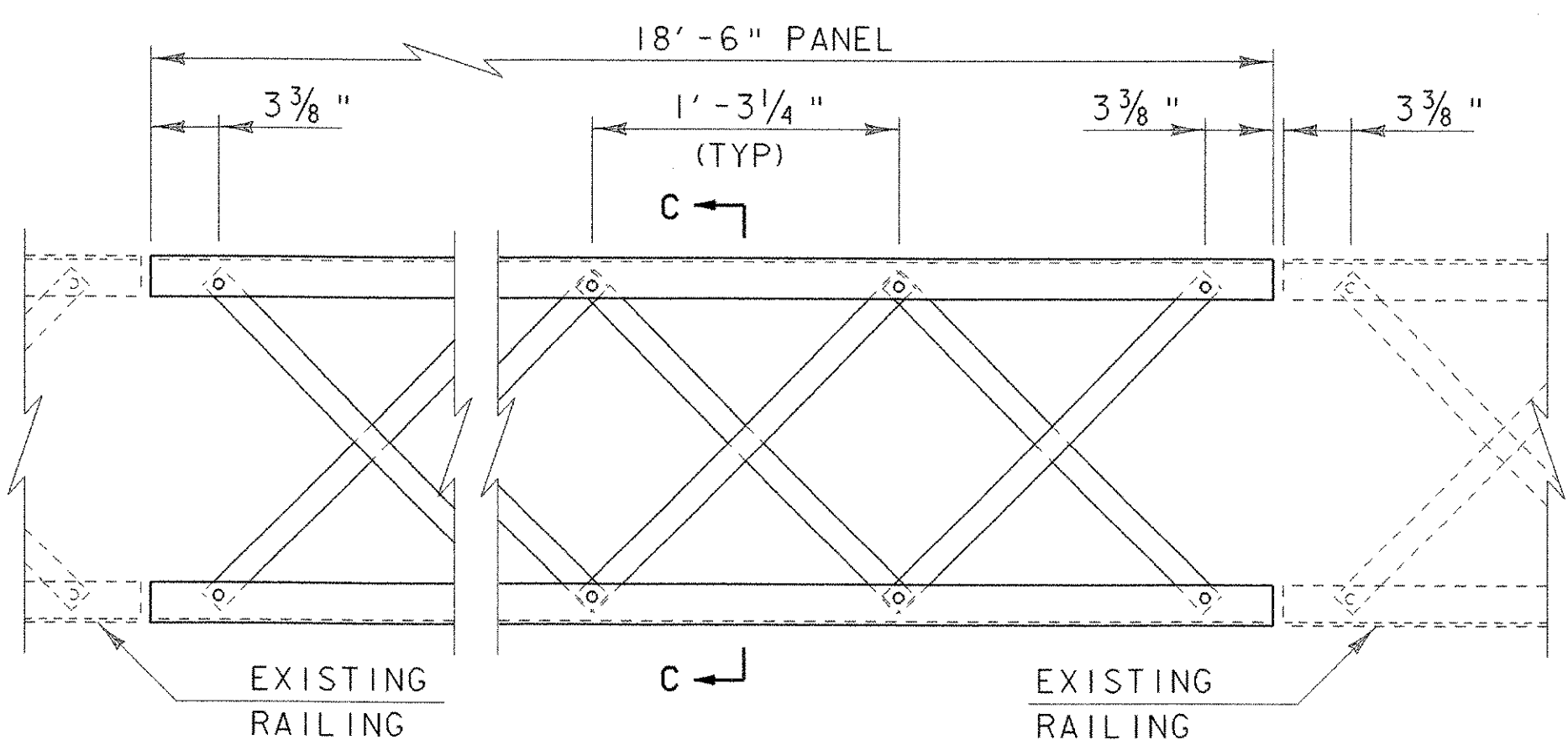
1. THE EXISTING LATTICE RAILING SHALL BE REMOVED FROM THE TRUSS, AND EITHER REPLACED IN KIND OR STRAIGHTENED ACCORDING TO THE LATTICE RAILING SCHEDULE. THE NEW PANELS SHALL BE ASSEMBLED WITH 3/8" DIA. GALVANIZED ROUND HEAD BOLTS. STRAIGHTENING SHALL BE IN ACCORDANCE WITH STANDARD SPECIFICATION 506.21.
2. FABRICATION OF REPLACEMENT PANELS, STRAIGHTENING OF EXISTING PANELS, AND ATTACHMENT TO THE 2 RAIL GALVANIZED BOX BEAM SHALL BE PAID FOR UNDER THE ITEM 506.60 "STRUCTURAL STEEL". SEE ATTACHMENT DETAILS ON SHEET 28.
3. EXISTING POSTS SHALL NOT BE REPLACED.

LATTICE RAILING SCHEDULE	
PANEL #	ACTION REQUIRED
E-1	STRAIGHTEN/REUSE
E-2	STRAIGHTEN/REUSE
E-3	STRAIGHTEN/REUSE
E-4	STRAIGHTEN/REUSE
E-5	REPLACE IN KIND
E-6	REPLACE IN KIND
E-7	STRAIGHTEN/REUSE
E-8	REPLACE IN KIND
W-1	STRAIGHTEN/REUSE
W-2	STRAIGHTEN/REUSE
W-3	STRAIGHTEN/REUSE
W-4	STRAIGHTEN/REUSE
W-5	STRAIGHTEN/REUSE
W-6	STRAIGHTEN/REUSE
W-7	STRAIGHTEN/REUSE
W-8	REPLACE IN KIND



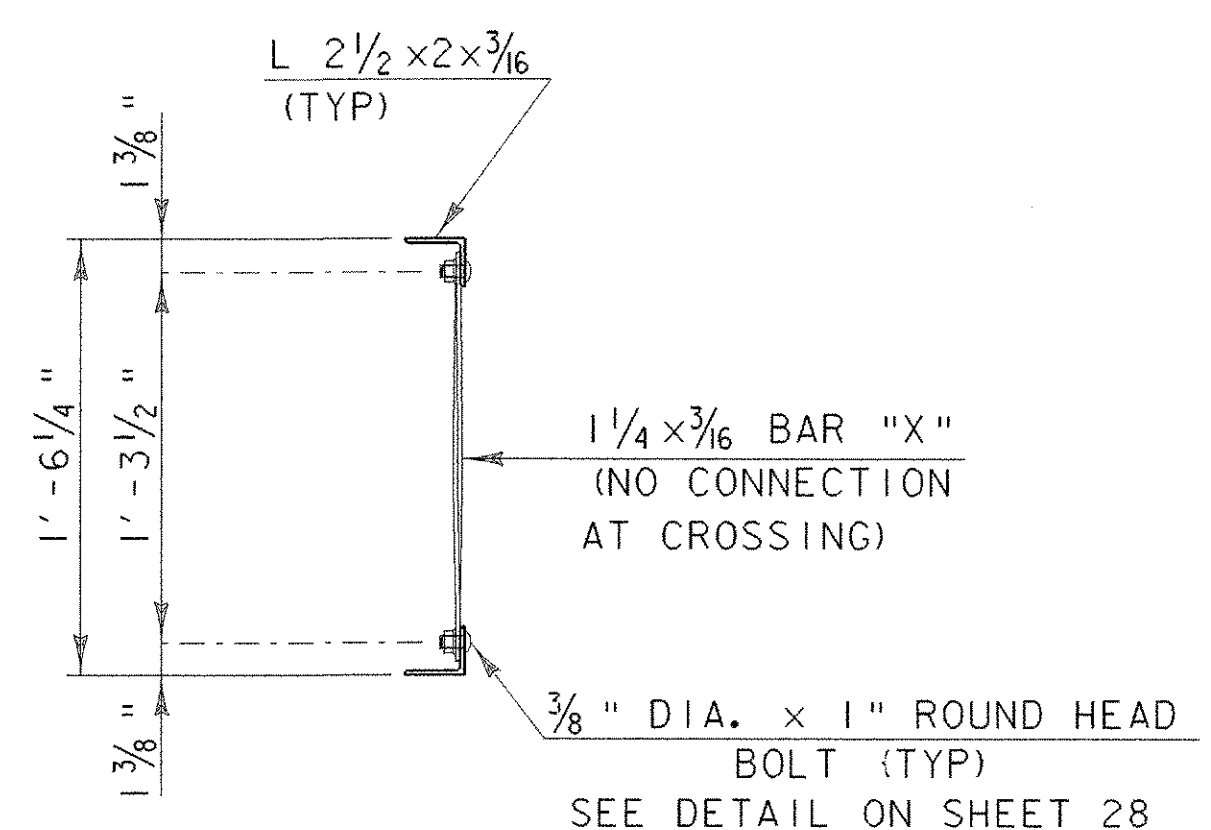
20'-0" LATTICE RAILING

SCALE 1 1/2" = 1'-0"



18'-6" LATTICE RAILING

SCALE 1 1/2" = 1'-0"



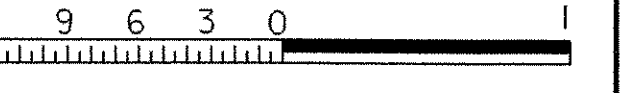
VIEW C-C (TYP)

SCALE 1 1/2" = 1'-0"

SCALE 3/16" = 1'-0"



SCALE 1 1/2" = 1'-0"



PROJECT: NEW HAVEN - WEYBRIDGE	PROJECT NO.: BHO-BTN 2005 (1)
DESIGN FILE NAME: 89j081/structures/sj081rail.dgn	PLOT DATE: 28-FEB-2007
IPARM FILE NAME: sj081railat.i	DRAWN BY: R.S. YOUNG
DESIGNED BY: R.S. YOUNG	CHECKED BY: R.S. YOUNG
SQUAD LEADER: C.P. WILLIAMS	SHEET: 29 OF 53
LATTICE RAIL DETAILS	