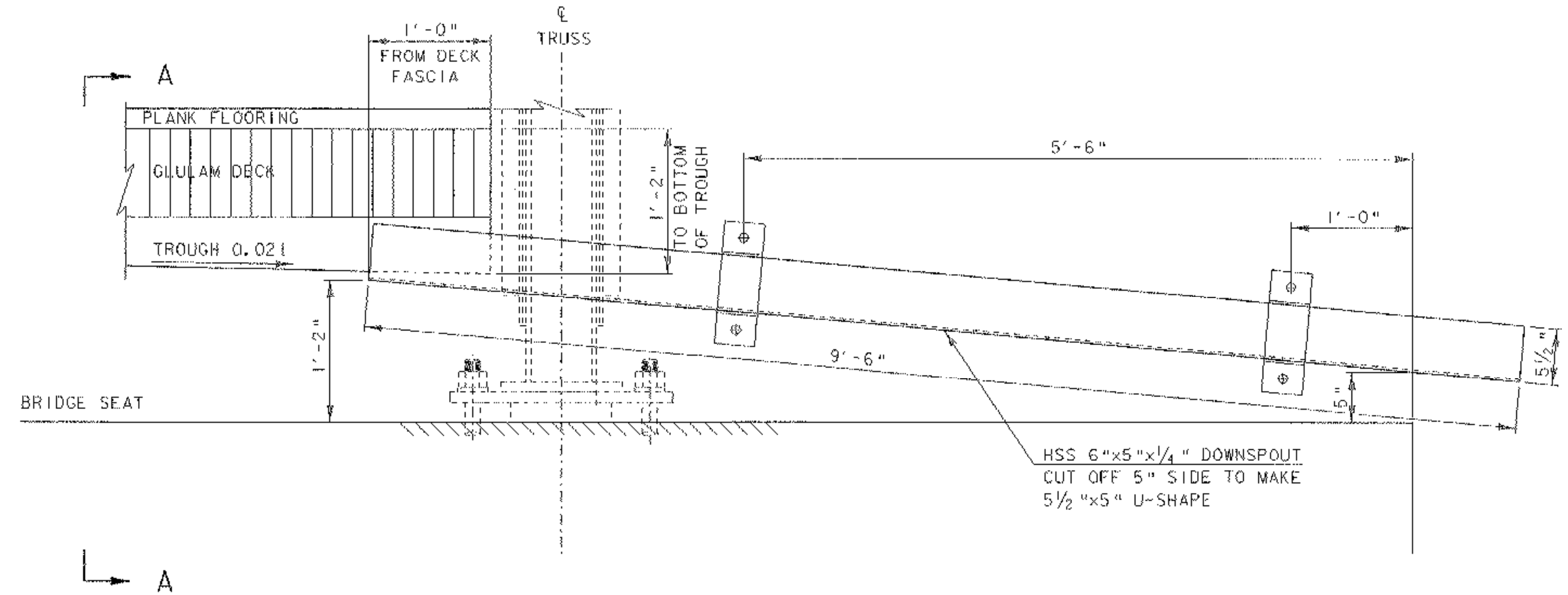


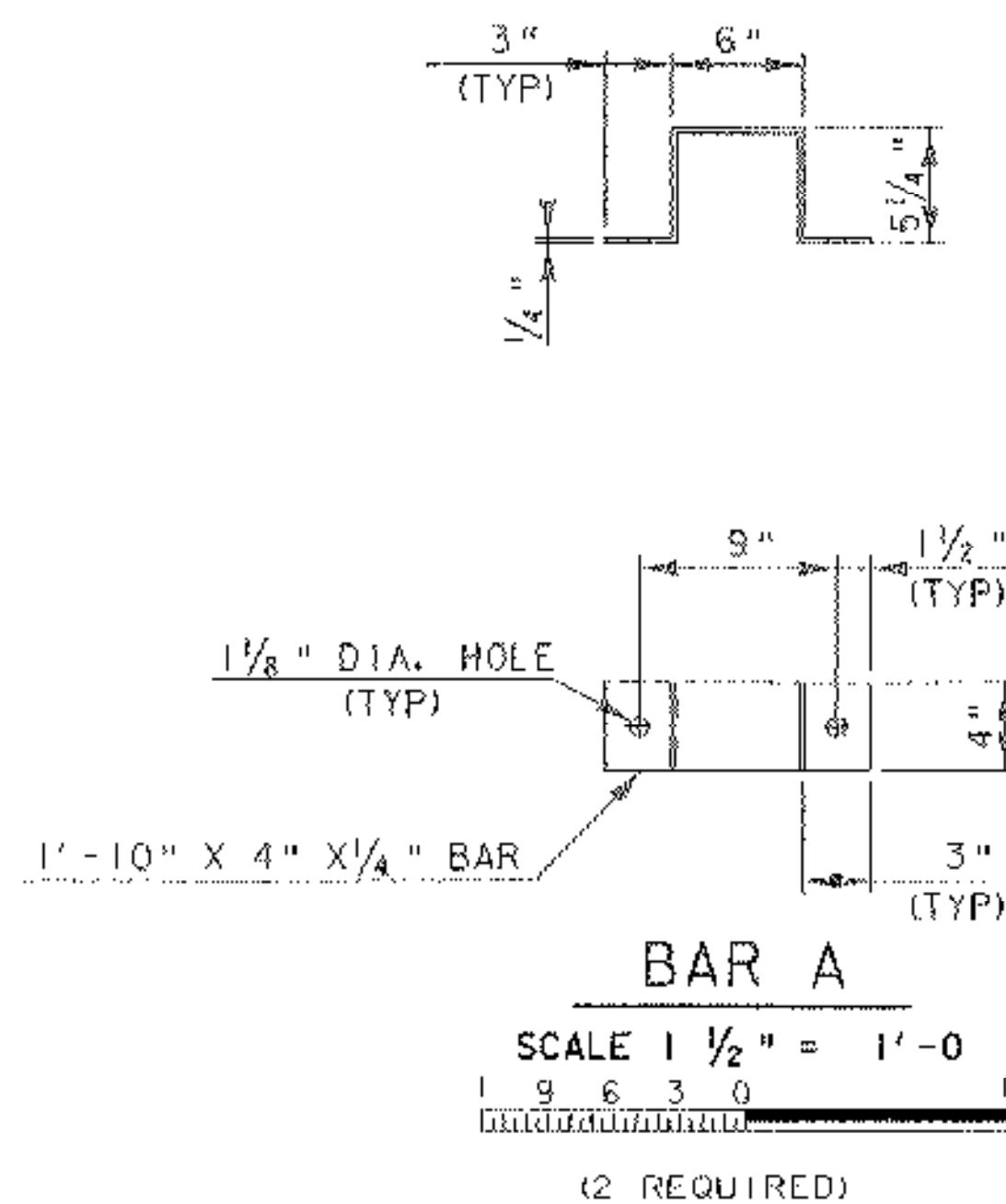
VIEW A - A

SCALE 1 1/2" = 1'-0"  
 1 9 6 3 0



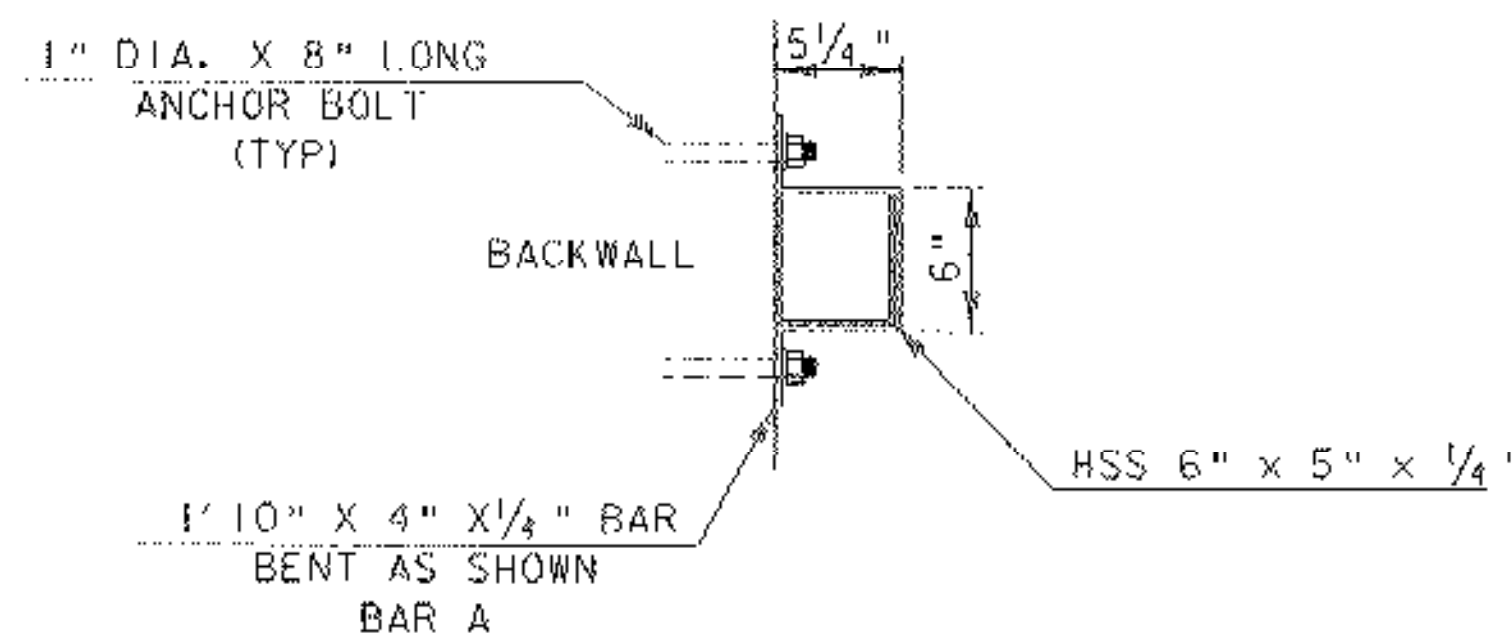
DOWNSPOUT ELEVATION

SCALE 1 1/2" = 1'-0"  
 1 9 6 3 0



BAR A

SCALE 1 1/2" = 1'-0"  
 1 9 6 3 0  
 (2 REQUIRED)



CROSS SECTION OF DOWNSPOUT  
 AT BAR LOCATION

SCALE 1 1/2" = 1'-0"  
 1 9 6 3 0

DOWNSPOUT NOTES

1. STRUCTURAL STEEL TUBING SHALL CONFORM TO ASTM A-500 GRADE B.
2. ALL PLATES, BARS, AND ANGLES SHALL CONFORM TO AASHTO M270 GRADE 50.
3. DOWNSPOUT SHALL BE GALVANIZED IN ACCORDANCE WITH VAOT STANDARD SPECIFICATIONS FOR CONSTRUCTION SECTION 506.15.
4. ALL BOLTS AND RELATED HARDWARE SHALL BE ASTM A-307 AND SHALL BE GALVANIZED IN ACCORDANCE WITH AASHTO M 232/M 232.
5. ANY PLACE WHERE THE GALVANIZING HAS BEEN REMOVED FROM THE DOWNSPOUT EITHER BY CUTTING, BURNING, WELDING, PLACING, OR ANY OTHER MEANS, SHALL BE REPAIRED BY THOROUGHLY CLEANING THE DAMAGED AREAS WITH A WIRE BRUSH AND PAINTING THE DAMAGED AREAS WITH AN APPROVED SEALANT, PAYMENT SHALL BE INCIDENTAL TO ITEM 506.60 "STRUCTURAL STEEL".
6. PLATES, BARS, AND ANGLES SHALL BE PAID FOR UNDER THE ITEM 506.60 "STRUCTURAL STEEL".
7. GRIND ALL CORNERS TO A 1/16" RADIUS PRIOR TO GALVANIZING.

PROJECT: NEW HAVEN - WEYBRIDGE	PROJECT NO.: BHO-BTN 2005 (1)
DESIGN FILE NAME: 89J081/structures/sj081downsp.t.dgn	PLOT DATE: 28-FEB-2007
IPARM FILE NAME: sj0812downsp.t.1	DESIGNED BY: R. S. YOUNG
SQUAD LEADER: C. P. WILLIAMS	DRAWN BY: R. S. YOUNG
DOWN SPOUT DETAILS	CHECKED BY: R. S. YOUNG
	SHEET: 25 OF 53