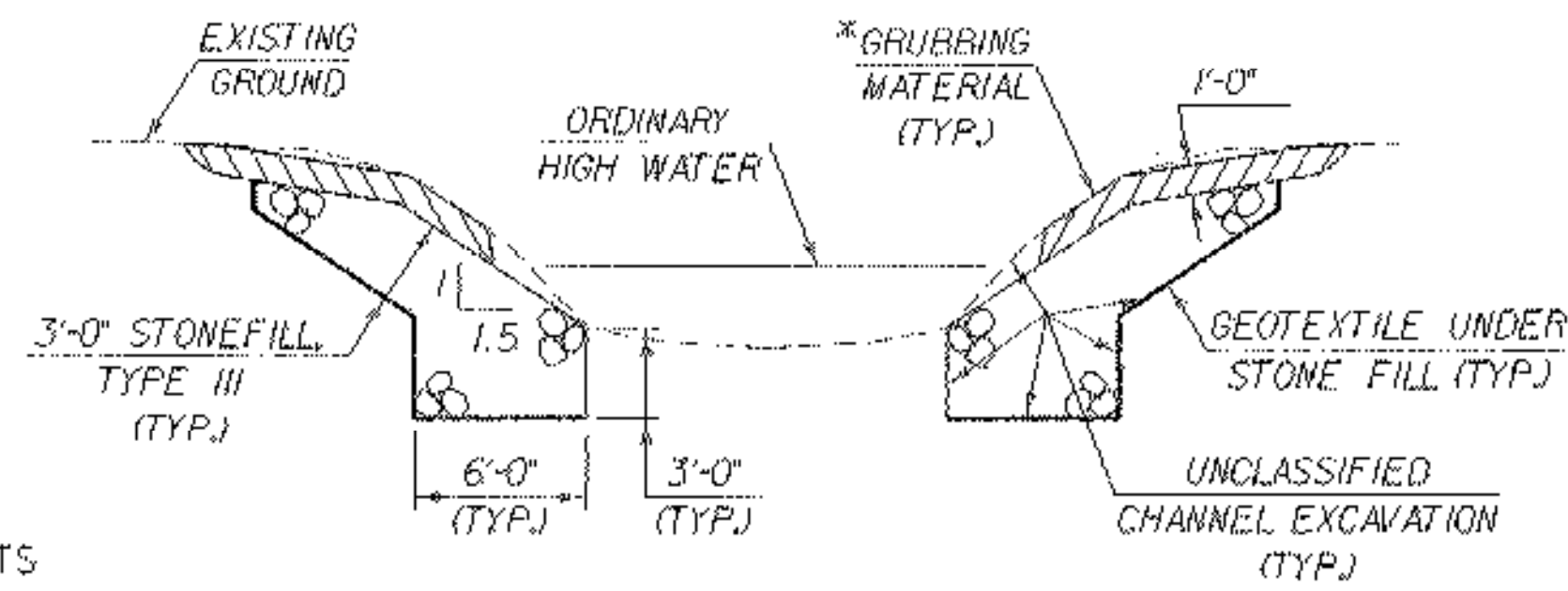


BEARING NOTES

- 1) BEARINGS SHALL CONFORM TO VAOT STANDARD SPECIFICATIONS FOR CONSTRUCTION SECTIONS 531 AND 731.
- 2) ALL COMPONENTS OF BEARINGS, EXCEPT STAINLESS STEEL, SHALL BE AASHTO M-270 GRADE 50 STEEL.
- 3) ALL COMPONENTS OF BEARING DEVICES SHALL BE METALIZED IN CONFORMANCE WITH VAOT STANDARD SPECIFICATIONS FOR CONSTRUCTION SECTIONS 531.04 AND 506.15. AREAS OF METALIZING DAMAGED BY FIELD WELDING OR HANDLING SHALL BE REPAIRED IN CONFORMANCE WITH ASTM A 760/A 760M.
- 4) ALL ANCHOR BOLTS, NUTS, AND WASHERS SHALL BE GALVANIZED. ALL WASHERS SHALL BE $\frac{3}{8}$ " PLATE. PAYMENT FOR ANCHOR BOLTS, NUTS, AND WASHERS SHALL BE INCLUDED IN THE UNIT BID PRICE FOR ITEM 531.10 "BEARING DEVICE ASSEMBLY, PREFORMED FABRIC PAD". ANCHOR BOLTS SHALL CONFORM TO VAOT STANDARD SPECIFICATIONS FOR CONSTRUCTION SECTION 714.08.
- 5) MANUFACTURING OF THE SOLE PLATE, BEARING PADS, ANCHOR BOLTS, AND STAINLESS STEEL SHALL BE PAID FOR UNDER THE BID ITEM 531.10 "BEARING DEVICE ASSEMBLY, PREFORMED FABRIC PAD" PAYMENT FOR THE BEARING COLUMN AND PLATE SHALL BE INCLUDED UNDER THE ITEM 506.60 "STRUCTURAL STEEL."
- 6) DESIGN CRITERIA:
 - A: PAD TO CONCRETE DESIGN PRESSURE = 1000 PSI
 - B: MINIMUM ALLOWABLE DESIGN ROTATION = 0.015 RADIAN
 - C: HORIZONTAL CAPACITY SHALL BE MINIMUM OF 10% VERTICAL CAPACITY.
 - D: DESIGN LOAD PER TRUSS BEARING = 82 KIPS
 - RDL = 38 KIPS
 - REL = 44 KIPS
- 7) ANCHOR BOLTS SHALL BE CAST/DRILLED AND GROUTED PRIOR TO CONNECTING THE END FLOOR BEAMS



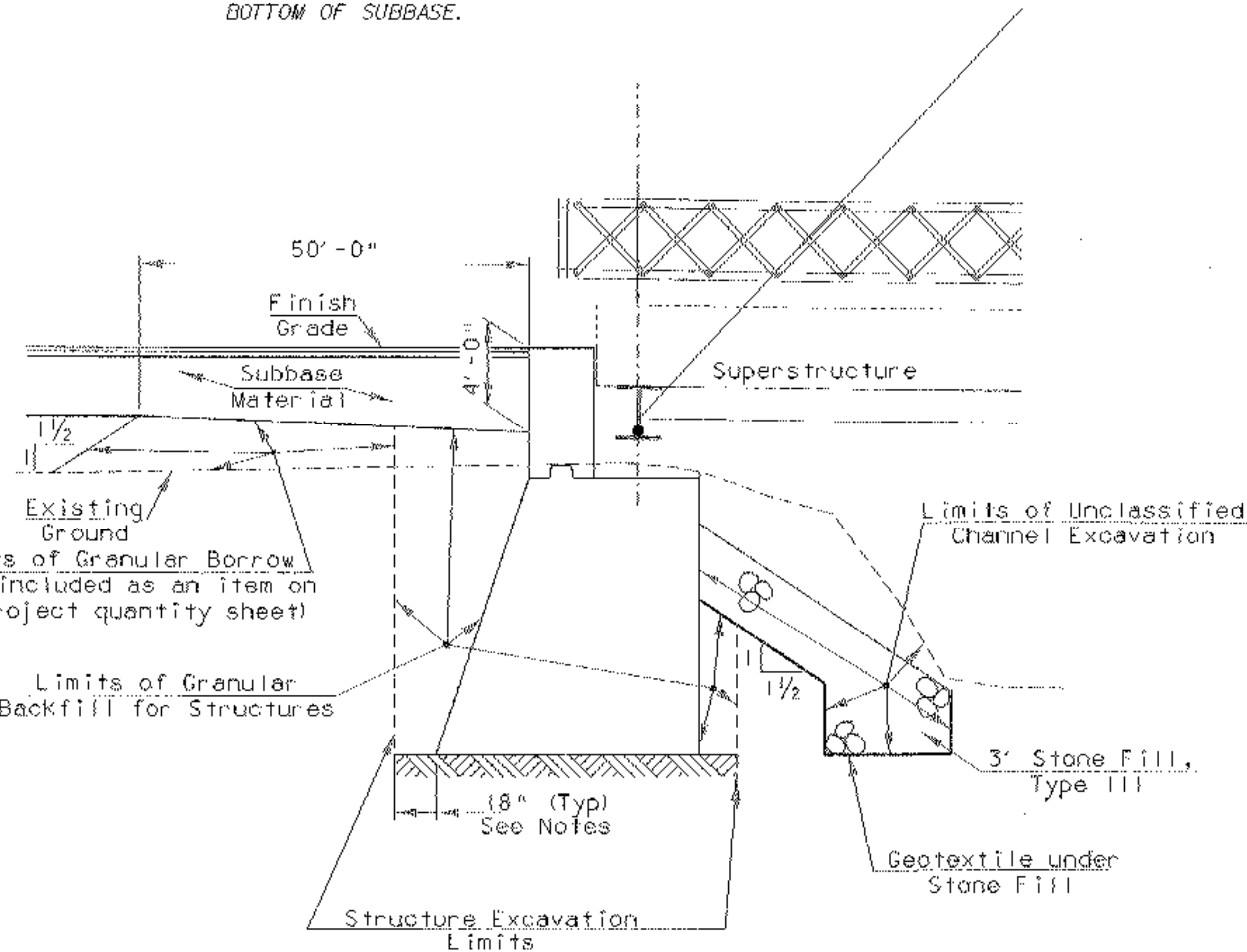
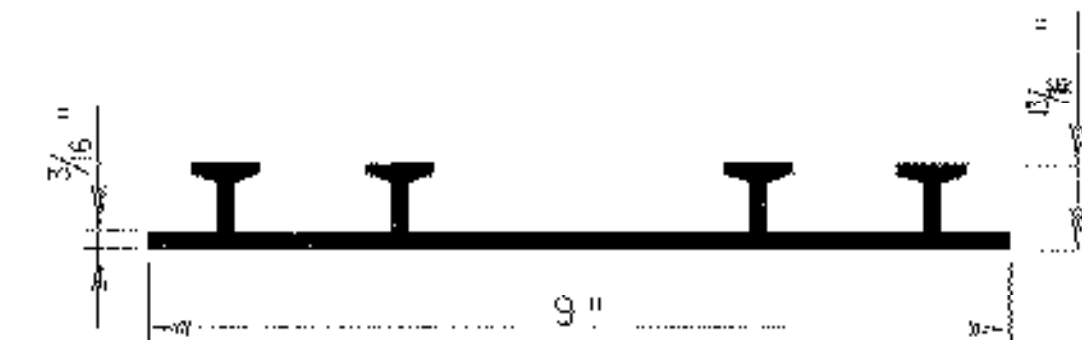
TYPICAL CHANNEL SECTION
(NOT TO SCALE)

*GRUBBING MATERIAL SHALL NOT BE PLACED ON THE STONE FILL IN THE AREA UNDER THE BRIDGE. WHENEVER CHANNEL SLOPE INTERSECTS ROADWAY SUBBASE, GRUBBING MATERIAL SHALL BEGIN AT THE BOTTOM OF SUBBASE.

P.V.C. WATERSTOP FOR CONSTRUCTION JOINTS

NFS

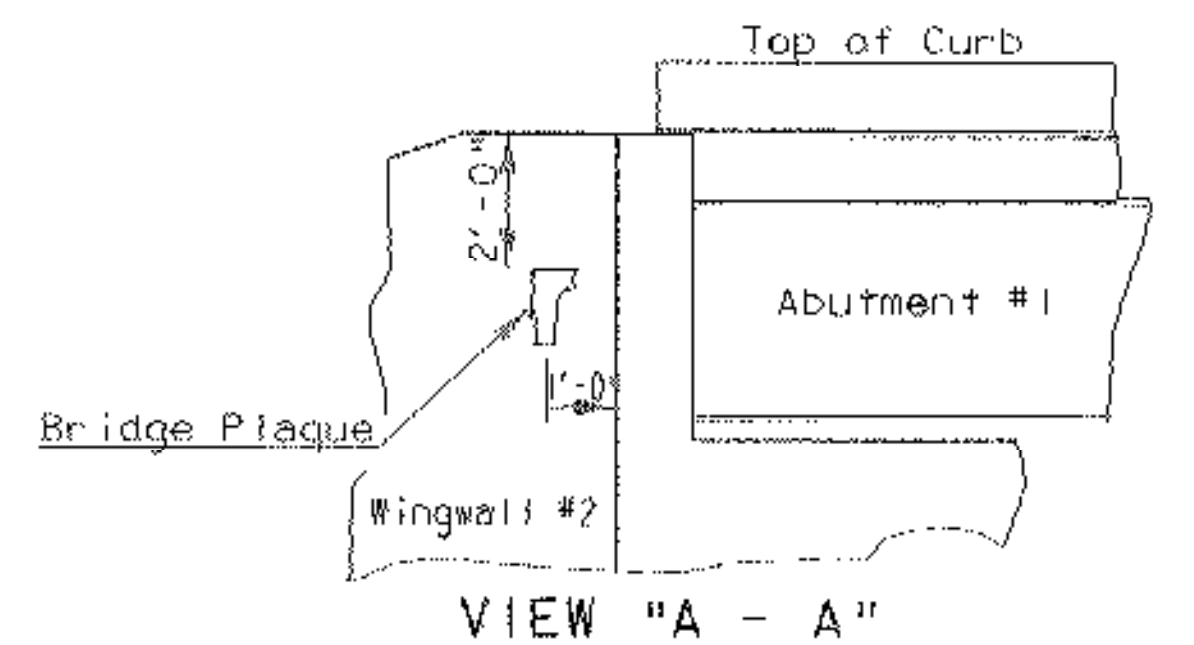
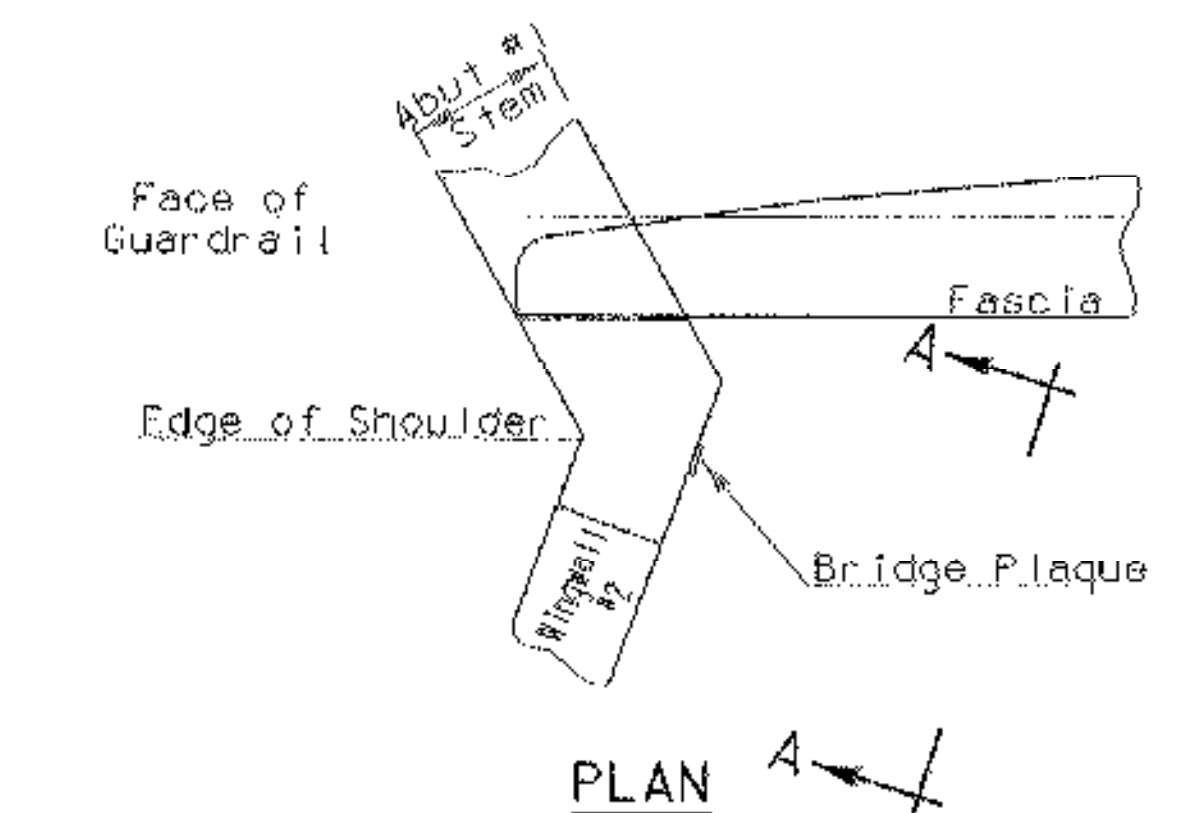
THE COSTS FOR P.V.C. WATERSTOP SHALL BE INCLUDED IN THE UNIT PRICE BID FOR CONCRETE. OTHER CONFIGURATIONS MAY BE USED UPON APPROVAL OF THE STRUCTURES ENGINEER.



ABUTMENT #1 TYPICAL SECTION
(NOT TO SCALE)

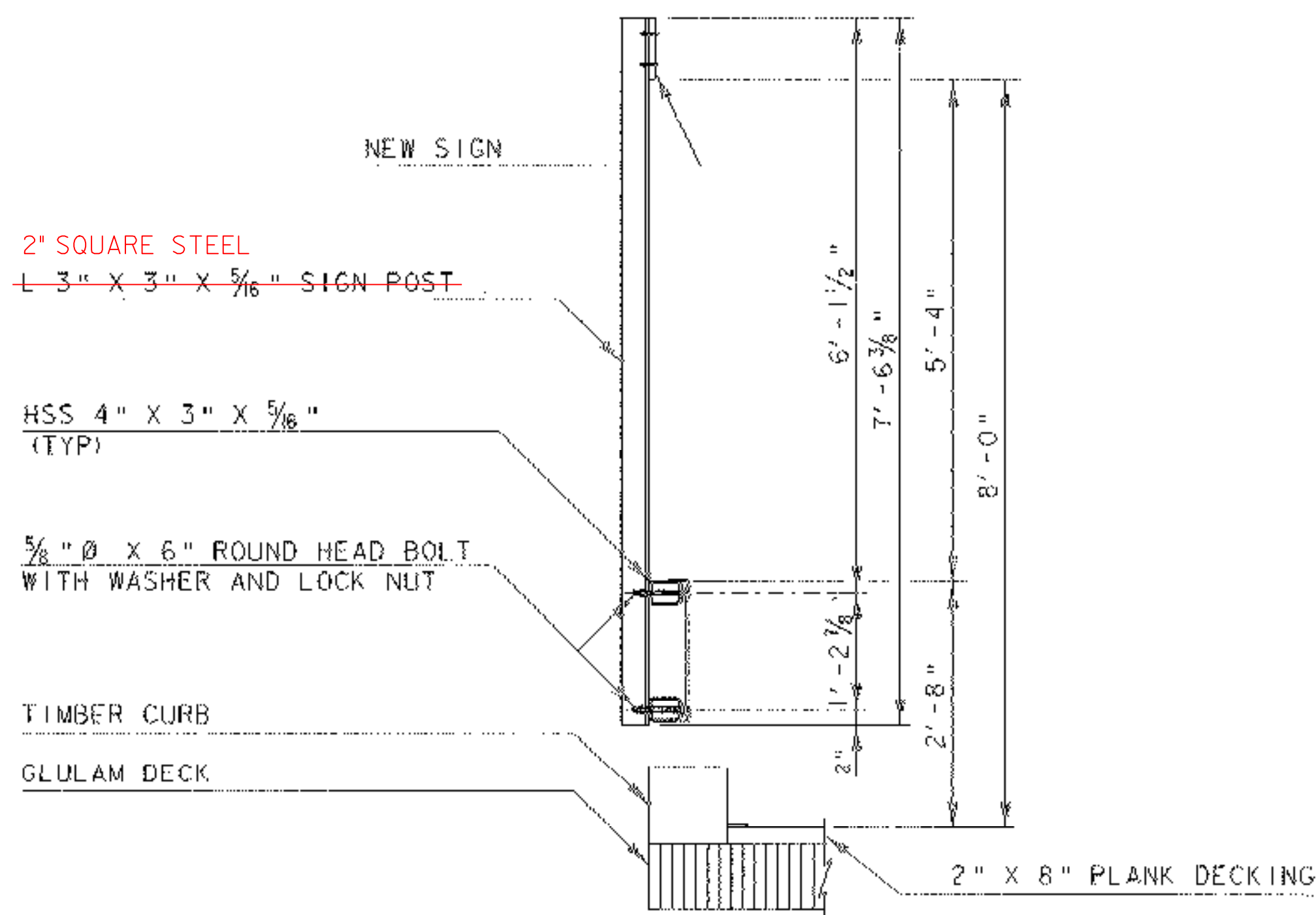
NOTES

1. FOR PURPOSES OF ESTIMATING EARTHWORK QUANTITIES, THE LIMITS OF STRUCTURE EXCAVATION HAVE BEEN ASSUMED TO BE 18" OUTSIDE THE PERIMETER OF THE FOOTING.
2. THE ACTUAL EXCAVATION LIMITS TO BE DETERMINED BY THE CONTRACTOR. NO PAYMENT WILL BE MADE FOR WORK OUTSIDE THE STRUCTURE EXCAVATION LIMITS SHOWN ABOVE.



LOCATE BRIDGE PLAQUE

THE BRIDGE PLAQUE WILL BE SUPPLIED BY THE AGENCY OF TRANSPORTATION AND SHALL BE INSTALLED BY THE CONTRACTOR AT ABUTMENT #1 ON THE RIGHT SIDE AS SHOWN OR AS DIRECTED BY THE ENGINEER.



TOWN LINE SIGN POST DETAIL

(STA 13+03.00) RT

SCALE $\frac{3}{4}$ " = 1'-0"



PROJECT: NEW HAVEN - WEYBRIDGE	PROJECT NO. #: BHO-BTN 2005 (1)
DESIGN FILE NAME: 89j081/structures/sj081bearing.dgn	PLOT DATE: 28-FEB-2007
IPARM FILE NAME: sj081bgnotesmisc.1	DESIGNED BY: R.S. YOUNG
DRAWN BY: M. LONGSTREET	CHECKED BY: R.S. YOUNG
SQUAD LEADER: C.P. WILLIAMS	BEARING NOTES/MISC DETAILS
	SHEET: 22 OF 53