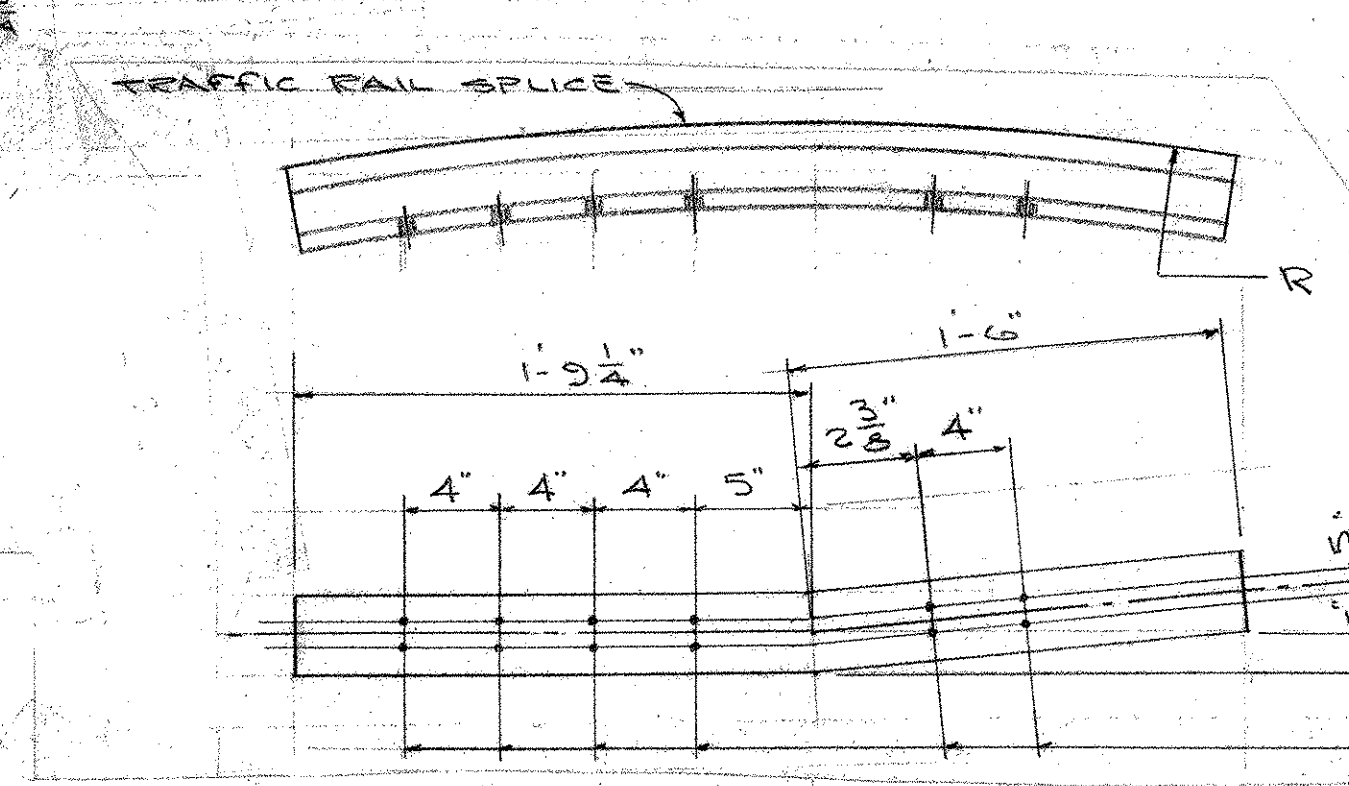
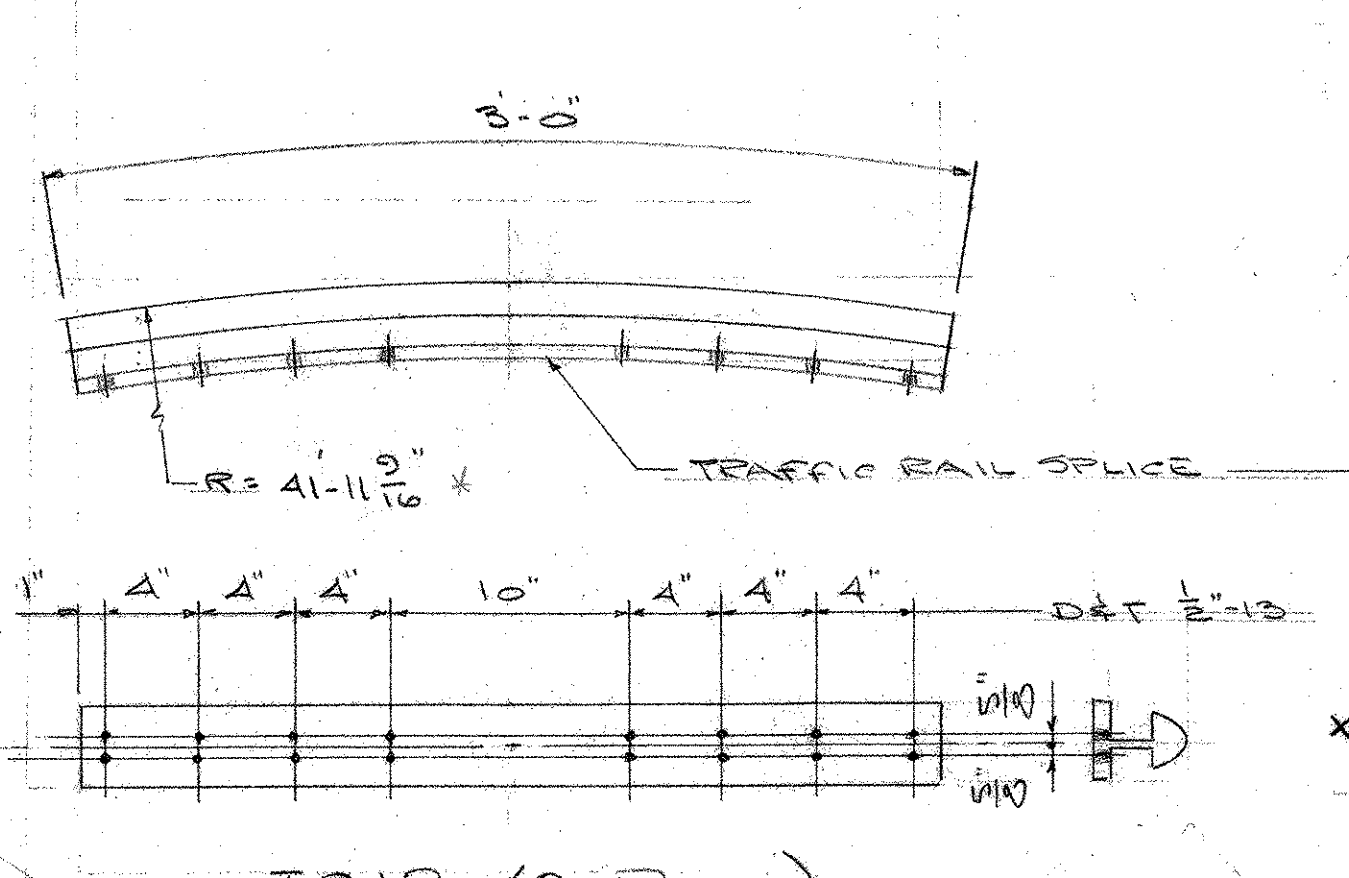
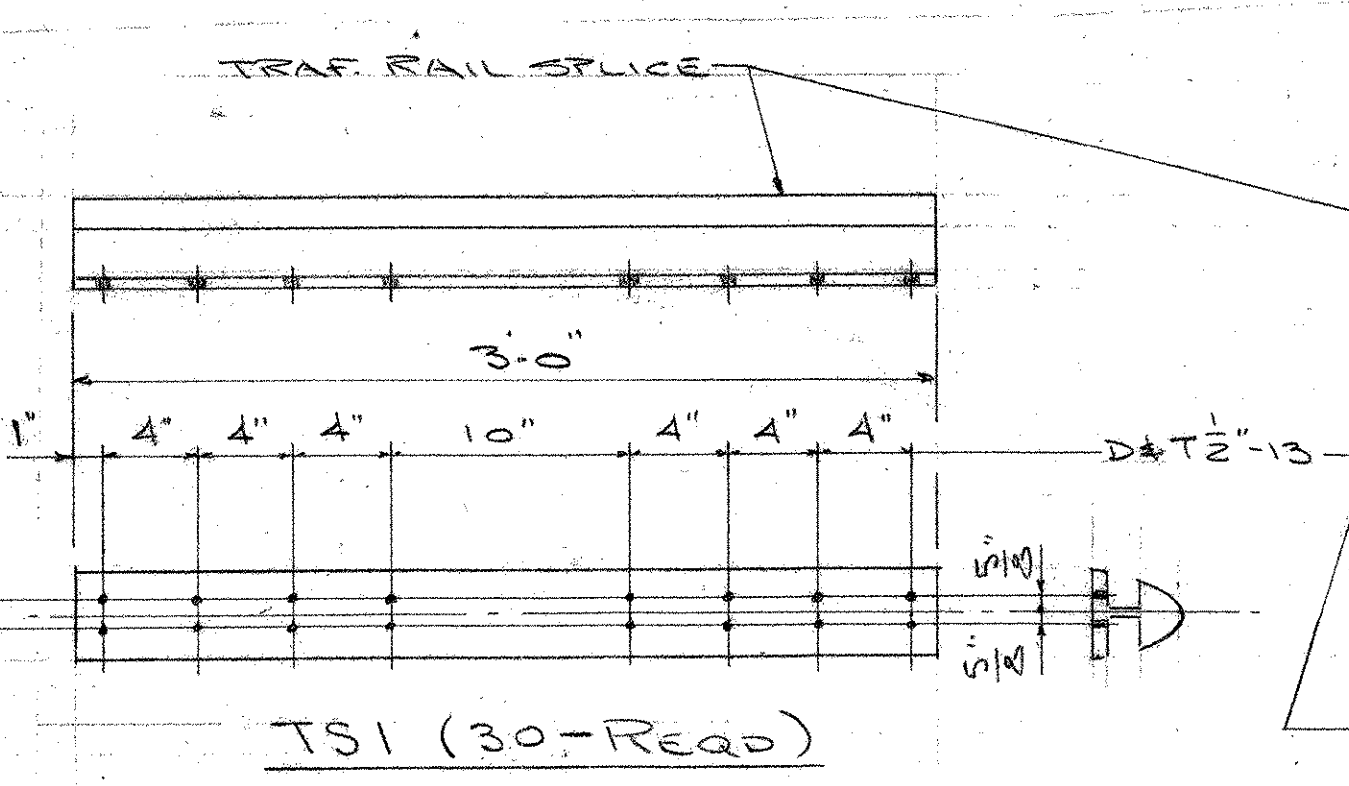
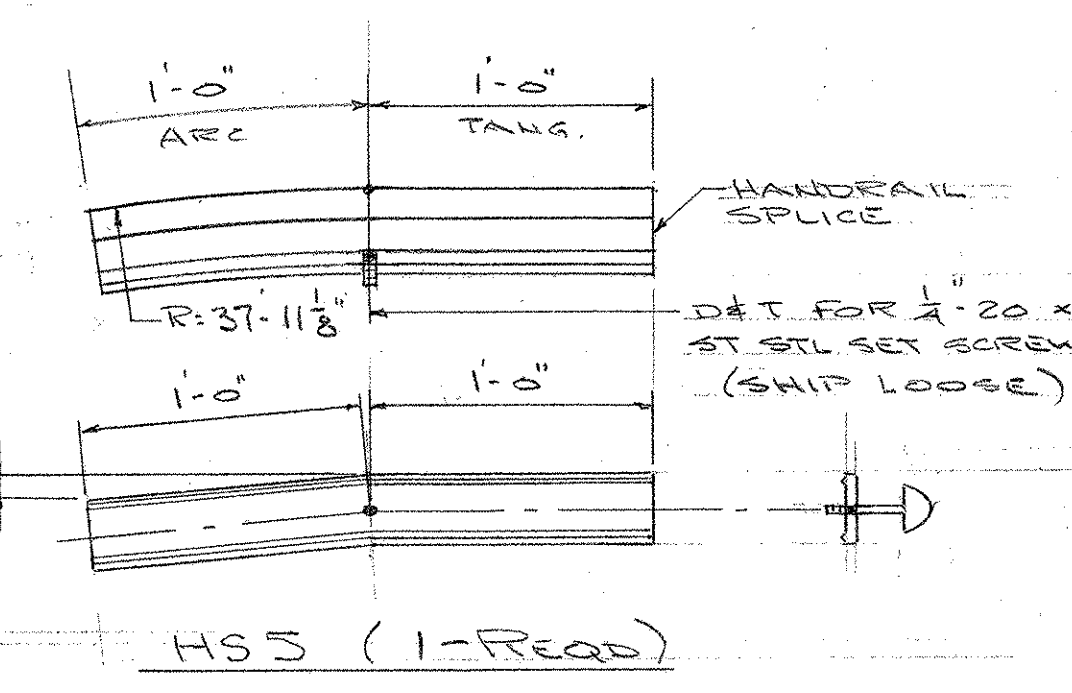


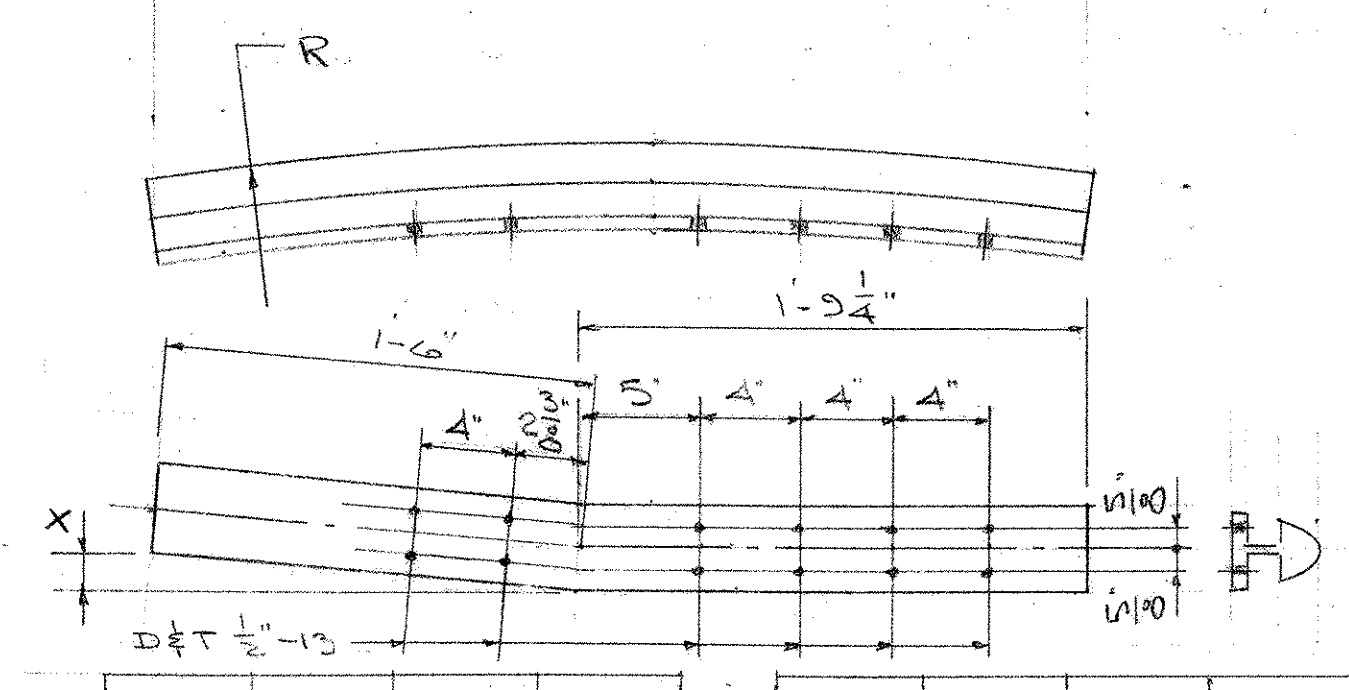
MK	QUAN	X
HS6	1	1"
HS4	1	0



MK	QUAN	X	R
TS4	1	13"	19-11 3/16"
TS5	1	3"	19-11 3/16"

MK	QUAN	X	R
TS15	1	13"	37-11 3/16"
TS16	1	3"	37-11 3/16"

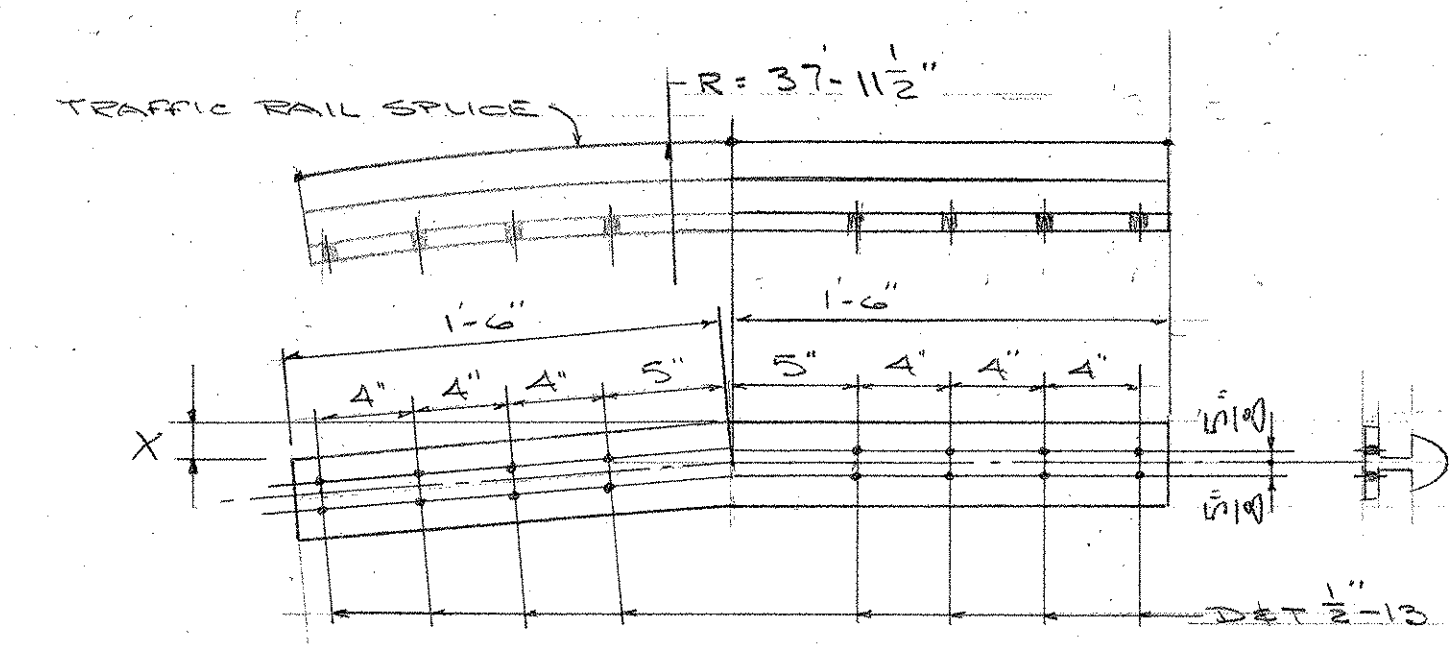
Why isn't TS15 = TS6
TS16 = TS7



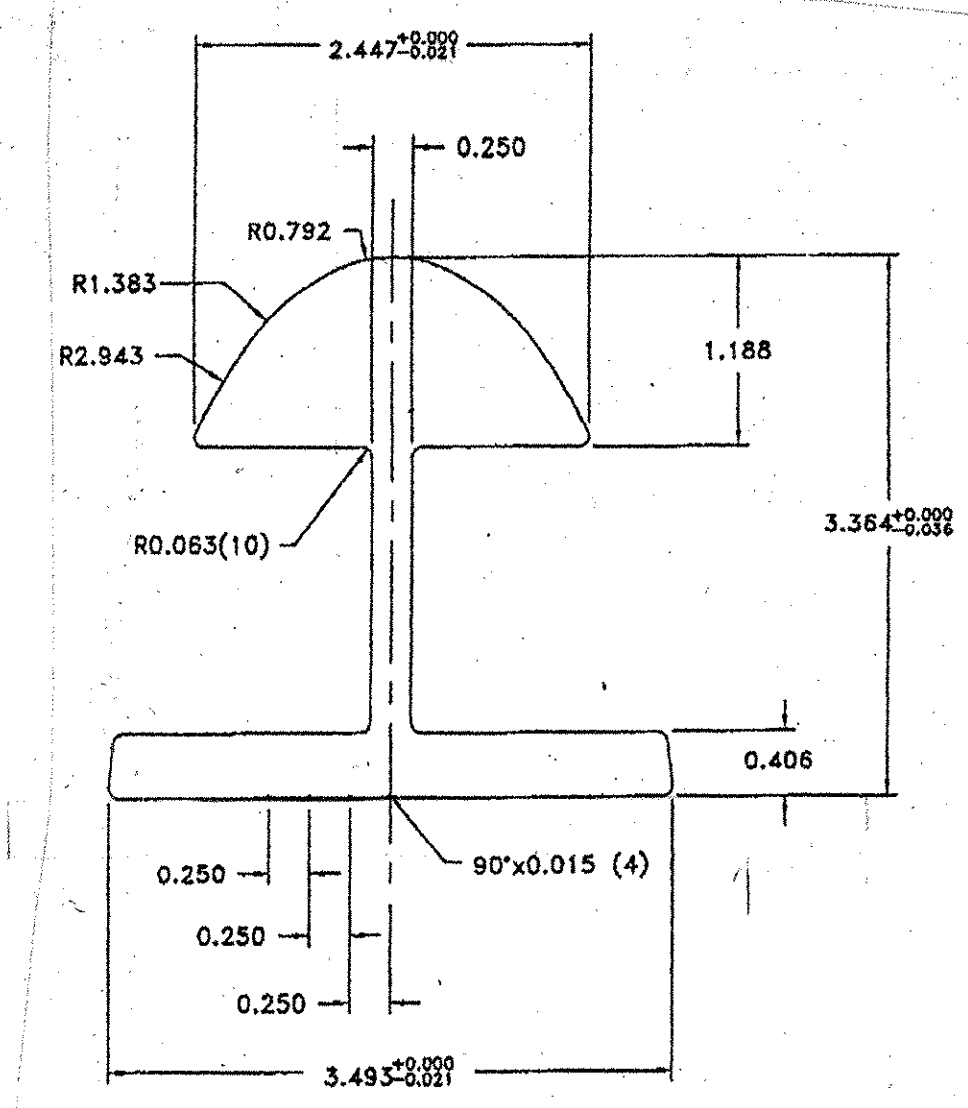
MK	QUAN	X	R
TS6	1	13"	37-11 3/16"
TS7	1	3"	37-11 3/16"

MK	QUAN	X	R
TS19	1	13"	41-11 1/2"
TS20	1	3"	41-11 1/2"

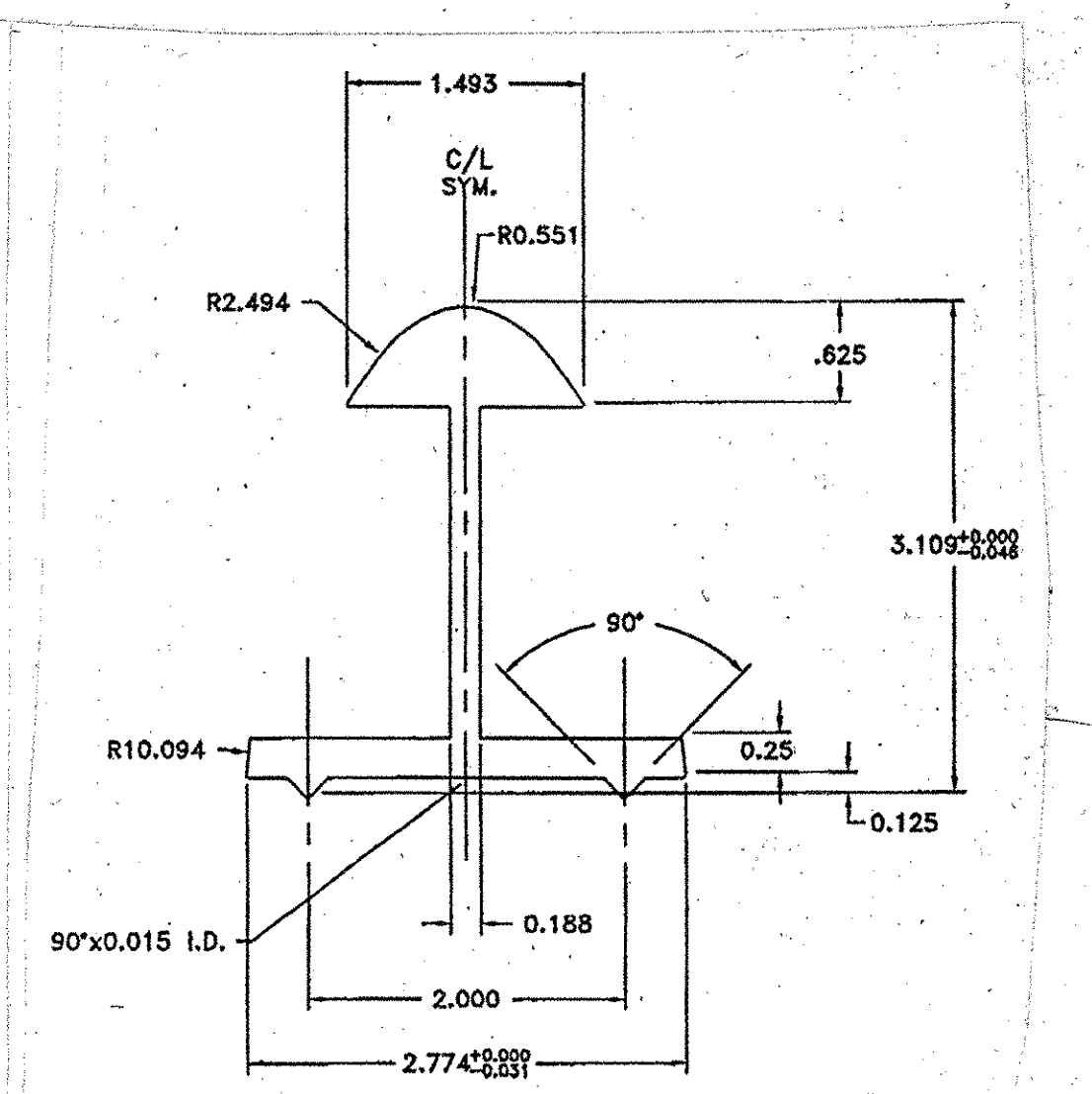
MK	QUAN	X	R
TS8	1	13"	41-11 3/16"
TS9	1	3"	41-11 3/16"



MK	QUAN	X
TS13	1	13"
TS14	1	3"



TRAFFIC RAIL SPLICE
EXTRUSION
ALLOY 6061-T6



HANDRAIL SPLICE
EXTRUSION
ALLOY 6061-T6

* Radius is increased by 1/16"

RECEIVED

OK'D BY: KMH OK'D BY: _____
MAY 12 2006
RESUBMIT: _____ APPROVED: As noted
BY: CPW DATE: 5/15/06

ISSUE	DATE	DESCRIPTION
2	5-8-06	FOR APPROVAL
1	3-24-06	FOR APPROVAL

AUCIELLO IRON WORKS INC
560 MAIN ST. HUDSON, MA (978) 568-8382

VT. AGENCY OF TRANSPORTATION
HARTFORD PROJ # BR-87N 2004(1)
BRIDGE # 3
T.H. 4 OVER WHITE RIVER

AL. BRIDGE & APPROACH RAILING

SURFACE PREP: NONE FINISH: BLACK ANODIZE

FOR: FRANK W. WHITCOMB CORP.

DR: VM 3-23-06
CHK: D 3-24-06
JOB NO. AS60012-1001
DWG. NO. BR-2878
SHEET 6 OF 8