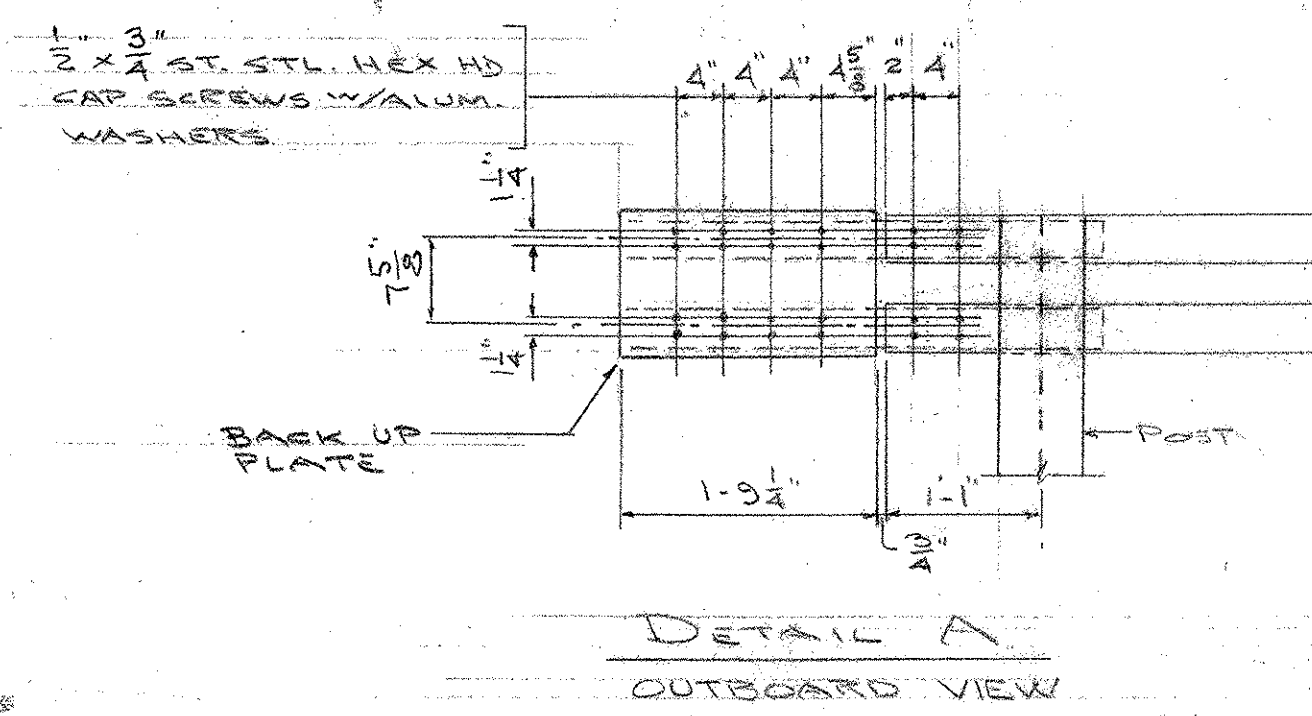
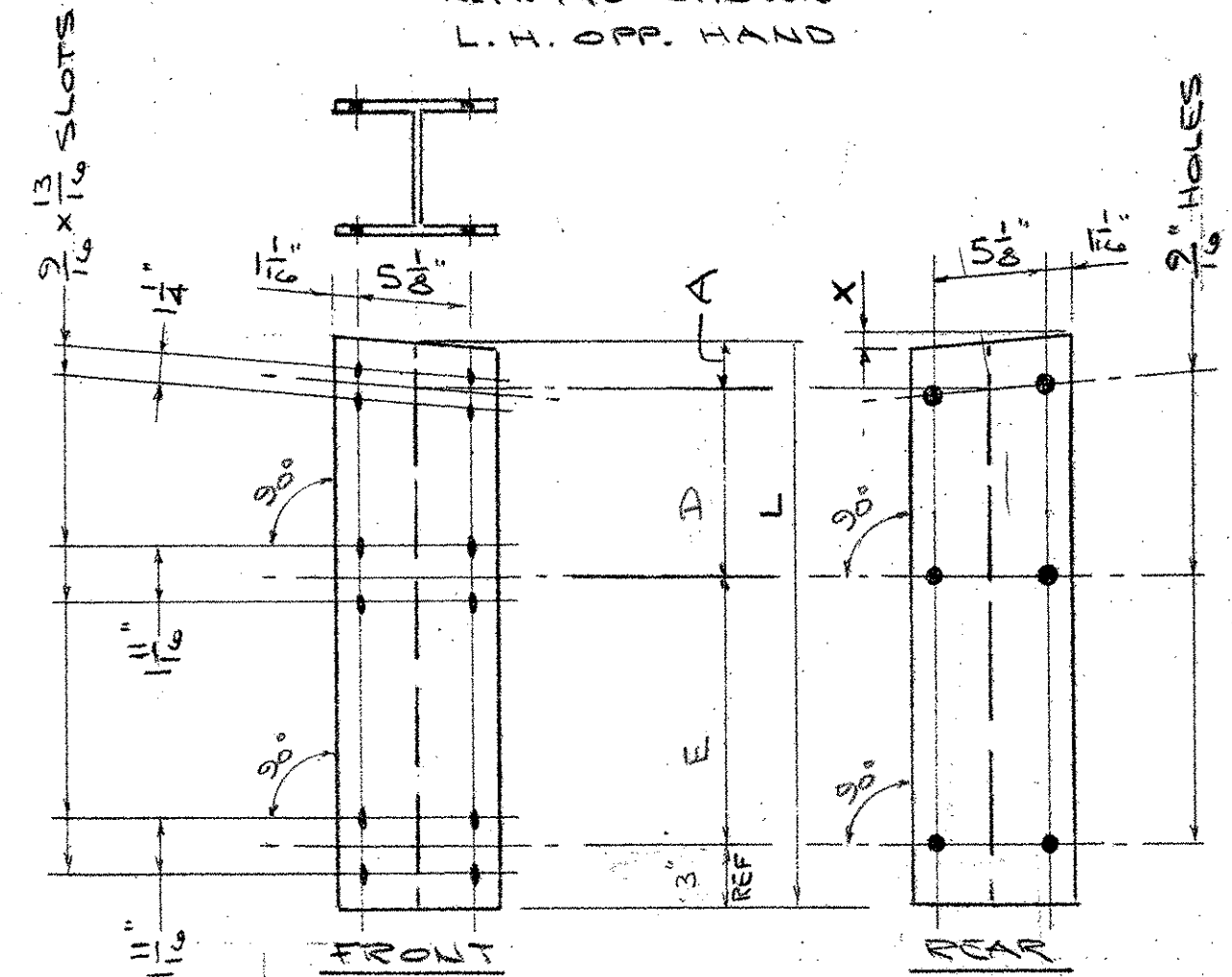
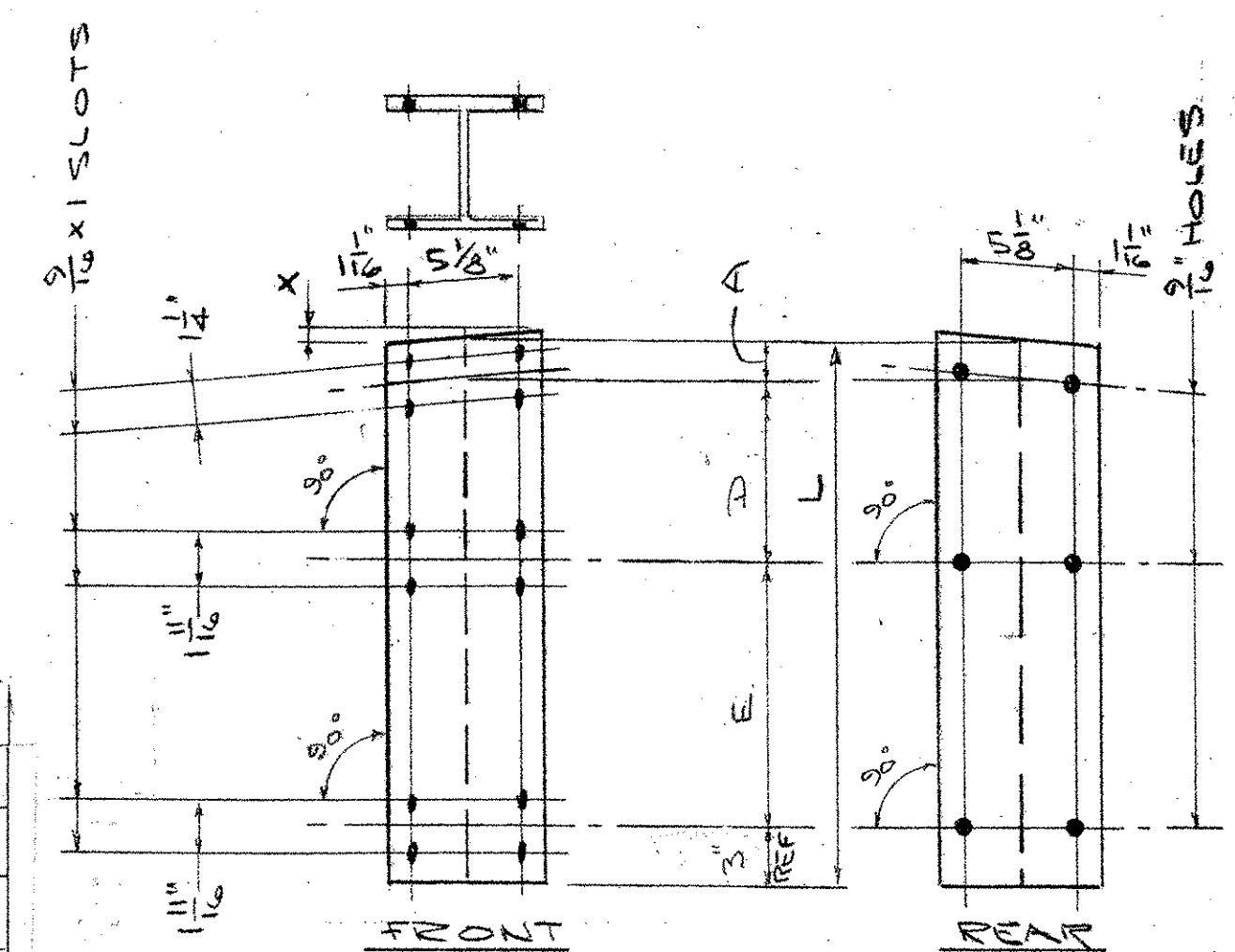
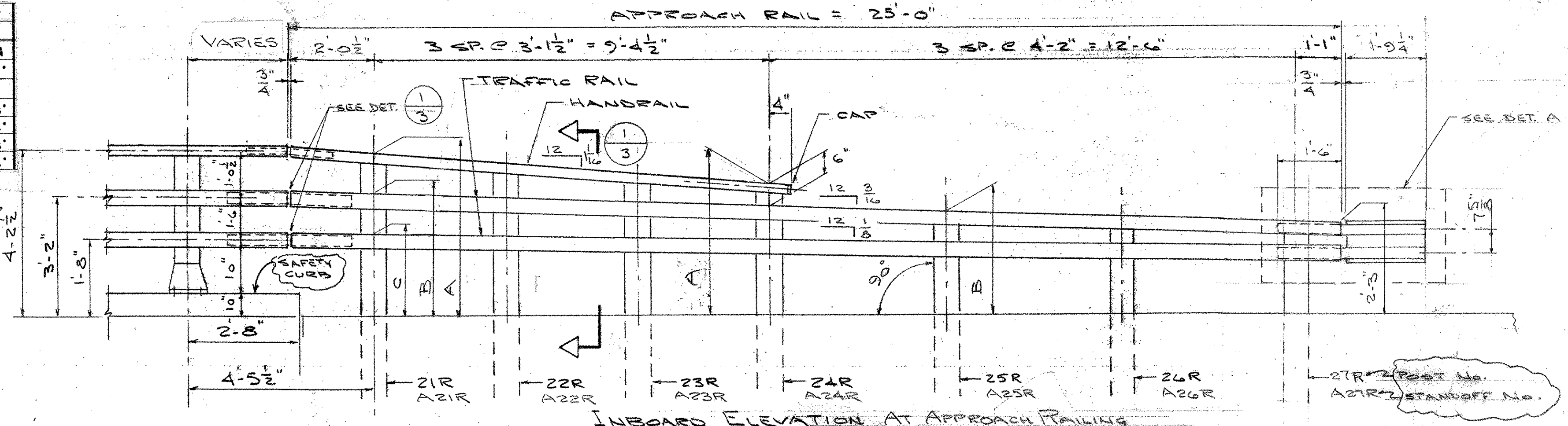


POST NO.	A	B	C
21	4'-1 1/4"	3'-2 3/4"	1'-9 3/4"
22	3'-10 3/4"	3'-1 1/4"	1'-9 3/4"
23	3'-7 1/4"	2'-11 3/4"	1'-9"
24	3'-3 3/4"	2'-9 3/4"	1'-8 3/4"
25	X	2'-7 1/4"	1'-8 3/4"
26	X	2'-5 1/2"	1'-7 3/4"
27	X	2'-3 1/4"	1'-7 3/4"

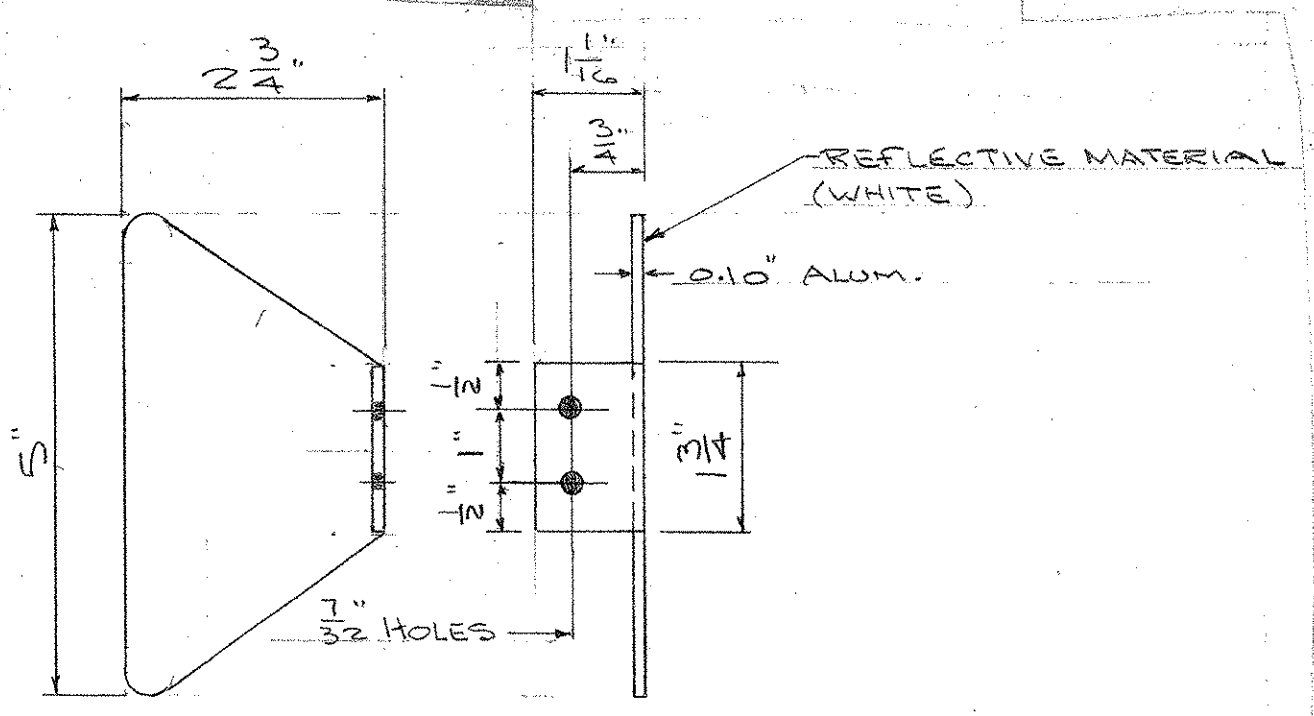


MK	QUAN	L	X	A	D	E
21L	2	6'-6"	5/8"	12 1/16"	11 1/16"	1'-5 3/8"
22L	2	6'-6"	5/8"	12 1/16"	9 3/4"	1'-3 3/8"
23L	2	6'-6"	5/8"	12 1/16"	8 3/8"	1'-2 3/16"
24L	2	6'-6"	5/8"	12 1/16"	6 1/16"	1'-1 1/4"
25L	2	6'-0"	3/8"	2"	0	11 9/16"
26L	2	6'-0"	3/8"	2"	0	9 13/16"
27L	2	6'-0"	3/8"	2"	0	8 1/16"

MK	QUAN	L	X	A	D	E
21R	2	6'-6"	5/8"	12 1/16"	11 1/16"	1'-5 3/8"
22R	2	6'-6"	5/8"	12 1/16"	9 3/4"	1'-3 3/8"
23R	2	6'-6"	5/8"	12 1/16"	8 3/8"	1'-2 3/16"
24R	2	6'-6"	5/8"	12 1/16"	6 1/16"	1'-1 1/4"
25R	2	6'-0"	3/8"	2"	0	11 9/16"
26R	2	6'-0"	3/8"	2"	0	9 13/16"
27R	2	6'-0"	3/8"	2"	0	8 1/16"

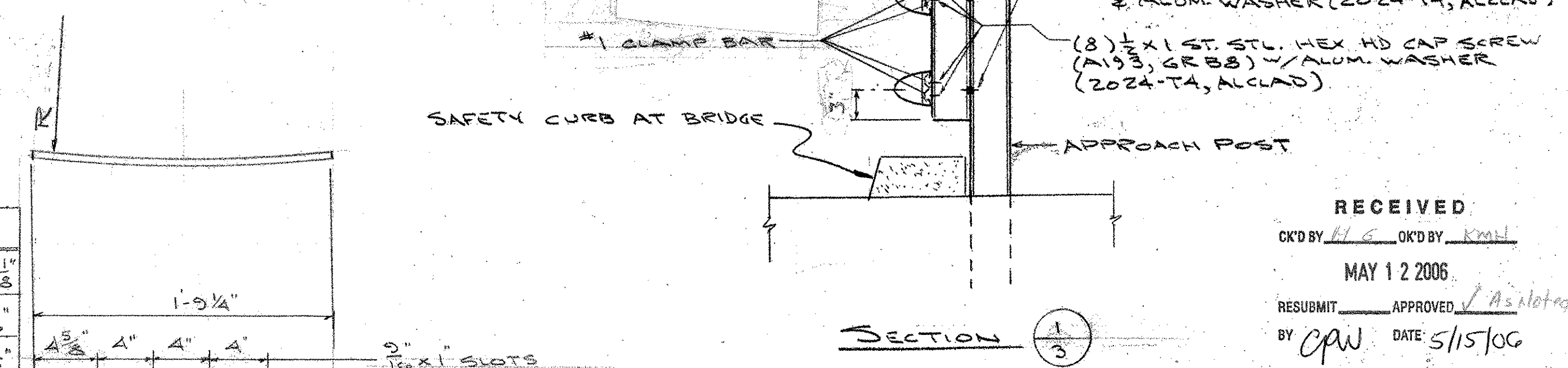
MK	QUAN	L	X	A	D	E
A21L	2	2'-9 1/8"	5/8"	12 1/16"	11 1/16"	1'-5 3/8"
A22L	2	2'-6 1/16"	5/8"	12 1/16"	9 3/4"	1'-3 3/8"
A23L	2	2'-3 1/4"	5/8"	12 1/16"	8 3/8"	1'-2 3/16"
A24L	2	2'-0 1/4"	5/8"	12 1/16"	6 1/16"	1'-1 1/4"
A25L	2	1'-4 3/16"	3/8"	2"	0	11 9/16"
A26L	2	1'-2 13/16"	3/8"	2"	0	9 13/16"
A27L	2	1'-1 1/16"	3/8"	2"	0	8 1/16"

MK	QUAN	L	X	A	D	E
A21R	2	2'-9 1/8"	5/8"	12 1/16"	11 1/16"	1'-5 3/8"
A22R	2	2'-6 1/16"	5/8"	12 1/16"	9 3/4"	1'-3 3/8"
A23R	2	2'-3 1/4"	5/8"	12 1/16"	8 3/8"	1'-2 3/16"
A24R	2	2'-0 1/4"	5/8"	12 1/16"	6 1/16"	1'-1 1/4"
A25R	2	1'-4 3/16"	3/8"	2"	0	11 9/16"
A26R	2	1'-2 13/16"	3/8"	2"	0	9 13/16"
A27R	2	1'-1 1/16"	3/8"	2"	0	8 1/16"

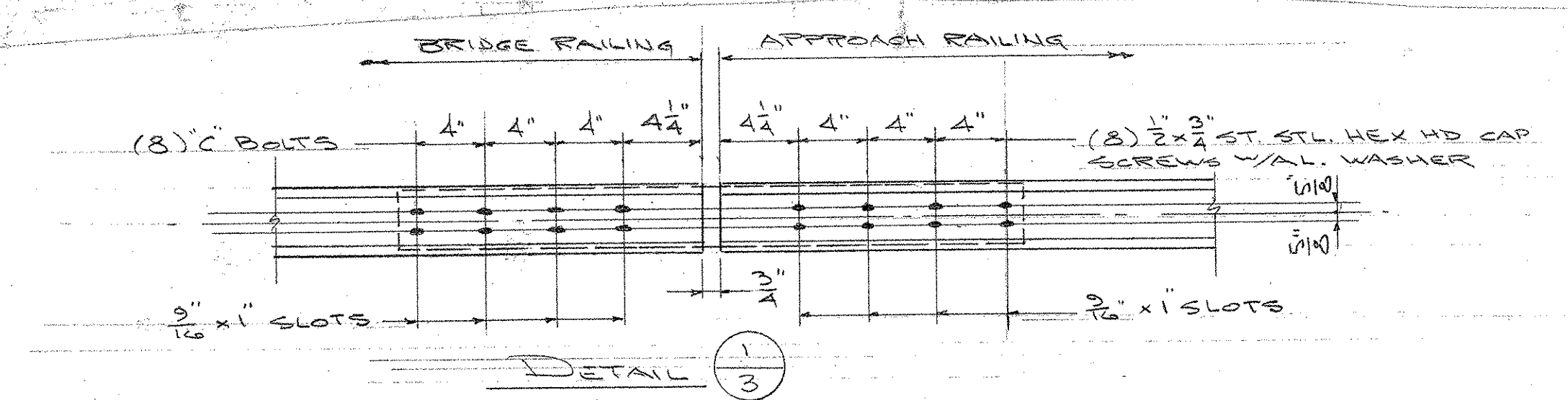


Post Reflector (30-Read)  
MATERIALS PER V.I.T. SPEC.

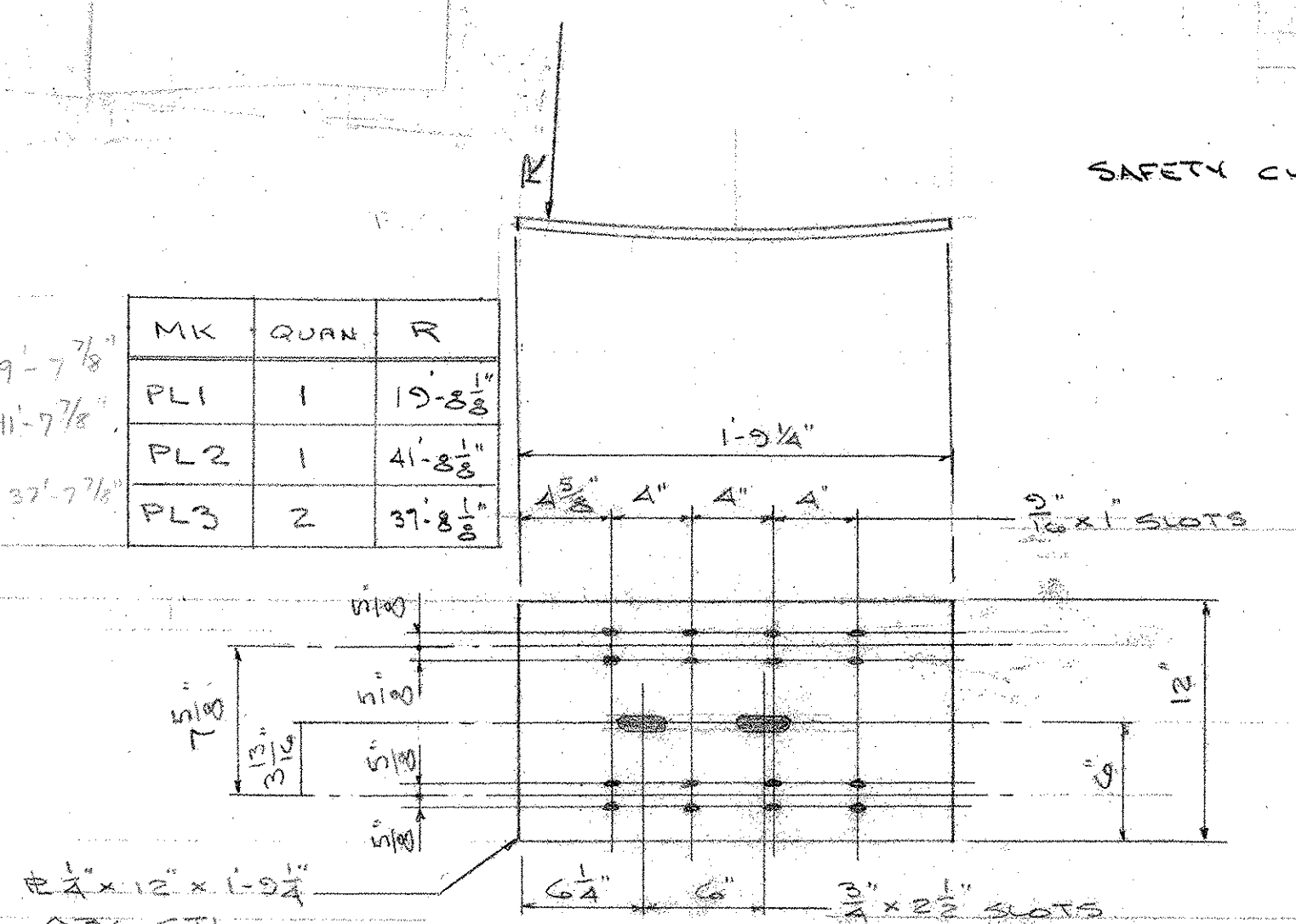
MK	QUAN	R
PL1	1	19'-8 3/8"
PL2	1	41'-8 3/8"
PL3	2	37'-8 3/8"



RECEIVED  
 CK'D BY *MLC* OK'D BY *KMH*  
 MAY 12 2006  
 RESUBMIT APPROVED *As noted*  
 BY *CPW* DATE 5/15/06



DETAIL 1/3



BACK UP PLATES  
 GALV. AFTER FAB.

<b>AUCIELLO IRON WORKS INC</b> 560 MAIN ST. HUBBARD, MA 01801-6682 VT. AGENCY OF TRANSPORTATION HARTFORD PROJ# BRO-BTU 2004 (1) BRIDGE #3 THRU OVER WHITE RIVER			
FOR: FRANK W. WHITCOMB CORP. DR: WM 3-23-06 CHK: 3-24-06 JOB NO. AB0012-1001	2 5-8-06 FOR APPROVAL 1 3-24-06 FOR APPROVAL ISSUE DATE DESCRIPTION	DWG. NO. <b>BR-2878</b> SHEET 3 OF 3	APPROACH RAIL AT SAFETY CURB