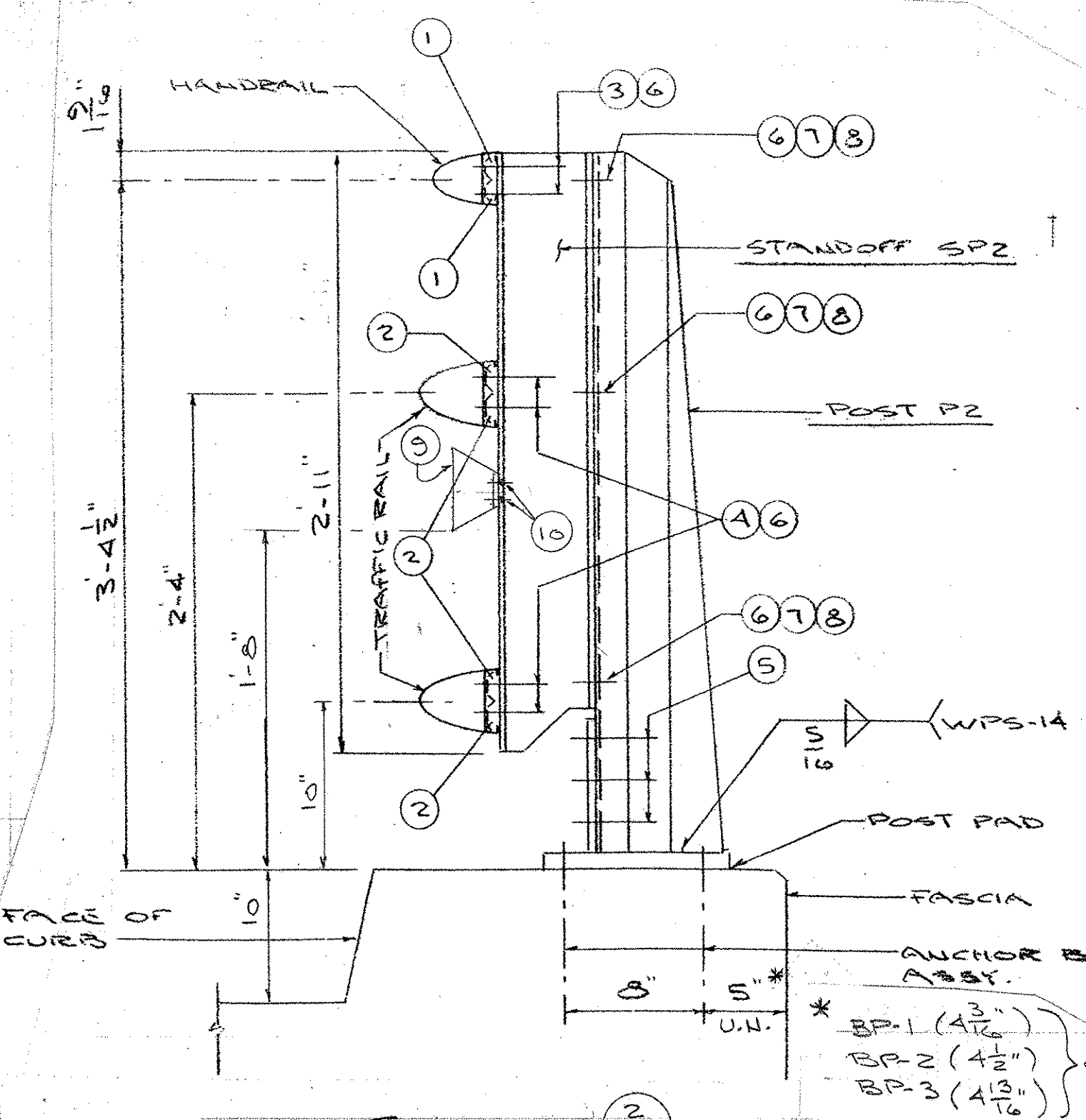
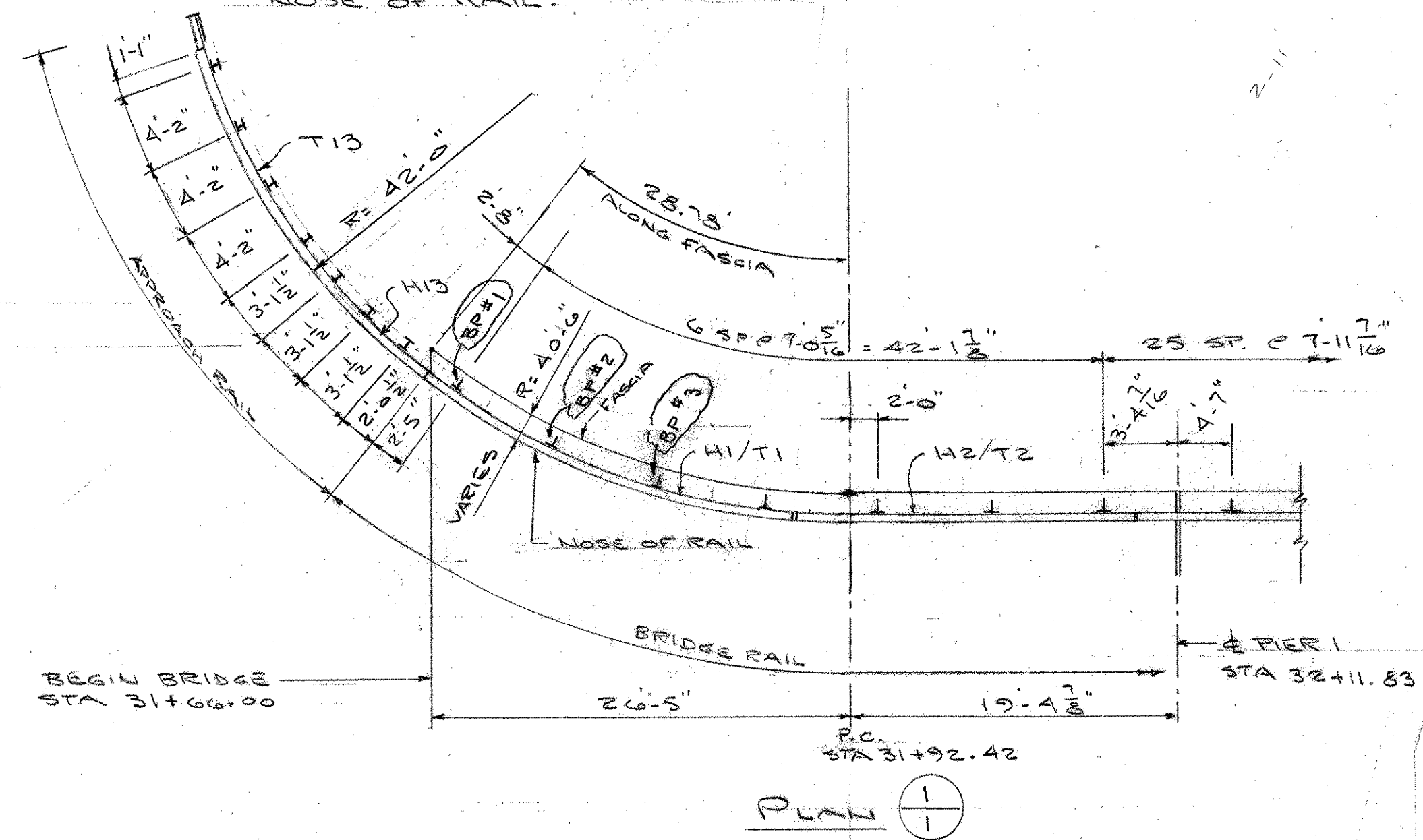
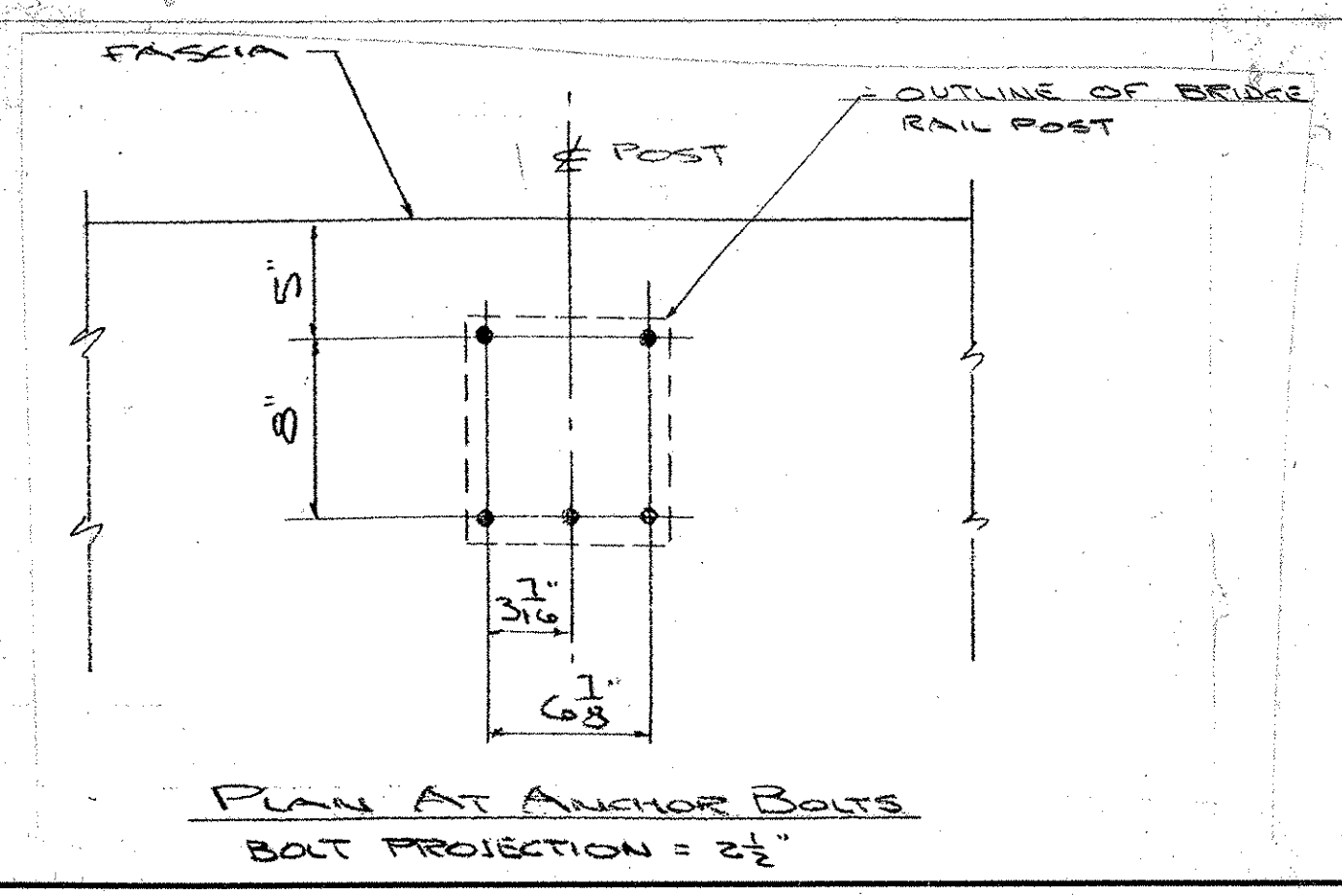
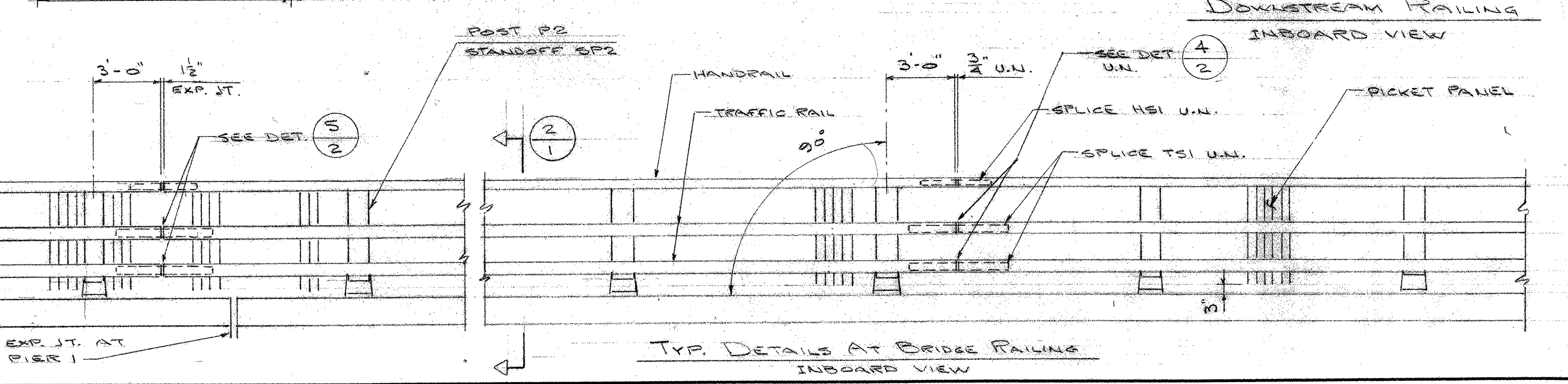
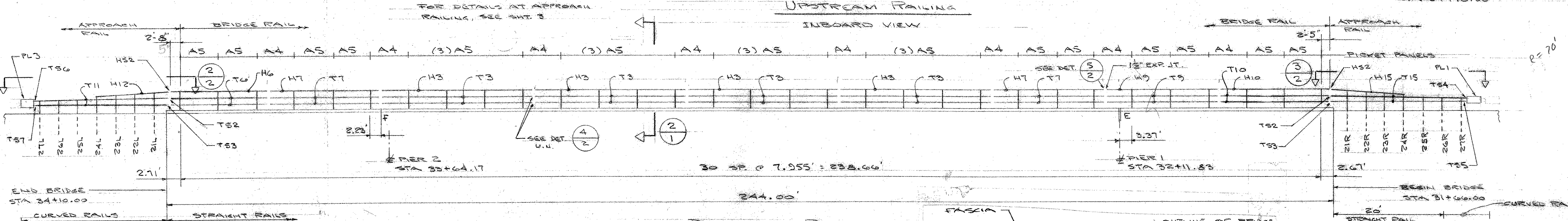
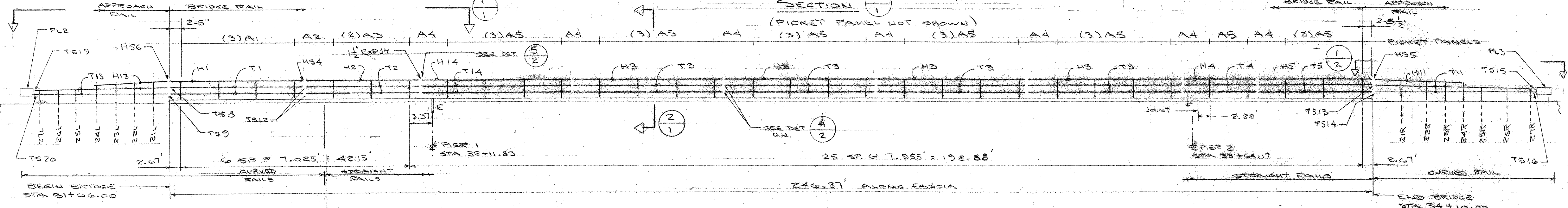


NOTE - DIM'S AT BRIDGE RAIL ARE ALONG FASCIA. DIM'S AT APPROACH RAIL ARE ALONG NOSE OF RAIL.



- 1 #4 CLAMP BAR
- 2 #1 CLAMP BAR
- 3 1/2" x 3/4" HEX HD CAP SCREW (A193, GR. B8)
- 4 1/2" x 1" HEX HD CAP SCREW (A193, GR. B8)
- 5 3/8" AL RIVET (6061-T6)
- 6 AL. WASHER 1 1/2" OD x 1 1/2" ID x 3/32" THK.
- 7 1/2" x 1 1/2" HEX HD CAP SCREW (304 ST. STL) 75,000 TENSILE
- 8 1/2" - 13 HEX NUT (304 ST. STL) 75,000 TENSILE
- 9 REFLECTORIZED DELIMITER (WHITE) PER SPEC. LOCATE EVERY 30' (OR CLOSEST POST). TIP AT BRIDGE RAIL & APPROACH RAIL.
- 10 #8 x 2" ST. STL. SELF-TAPPING SCREW. DRILL POSTS IN FIELD.



RECEIVED
 CK'D BY: KMH, OK'D BY: [Signature]
 MAY 12 2006
 RESUBMIT APPROVED [Signature]
 BY: OPW DATE: 5/15/06

AUCIELLO IRON WORKS INC
 560 MAIN ST. HUDSON, MA (978) 568-8382

VT AGENCY OF TRANSPORTATION
 HARTFORD PROJ # BRO-BTN 2004(1)
 BRIDGE # 3
 T.H.A. OVER WHITE RIVER

AL BRIDGE & APPROACH RAILING

SURFACE PREP: NONE FINISH: BLACK ANODIZE

FOR: FRANK W. WHITECOMB CORP.
 DR: N.W. 3-24-06 DWG. NO.
 CHK: S. 3-24-06 BR-2878
 JOB NO. AS000121001 SHEET 1 OF 3

ISSUE	DATE	DESCRIPTION
2	5-8-06	FOR APPROVAL
1	3-24-06	FOR APPROVAL

OFFICE COPY