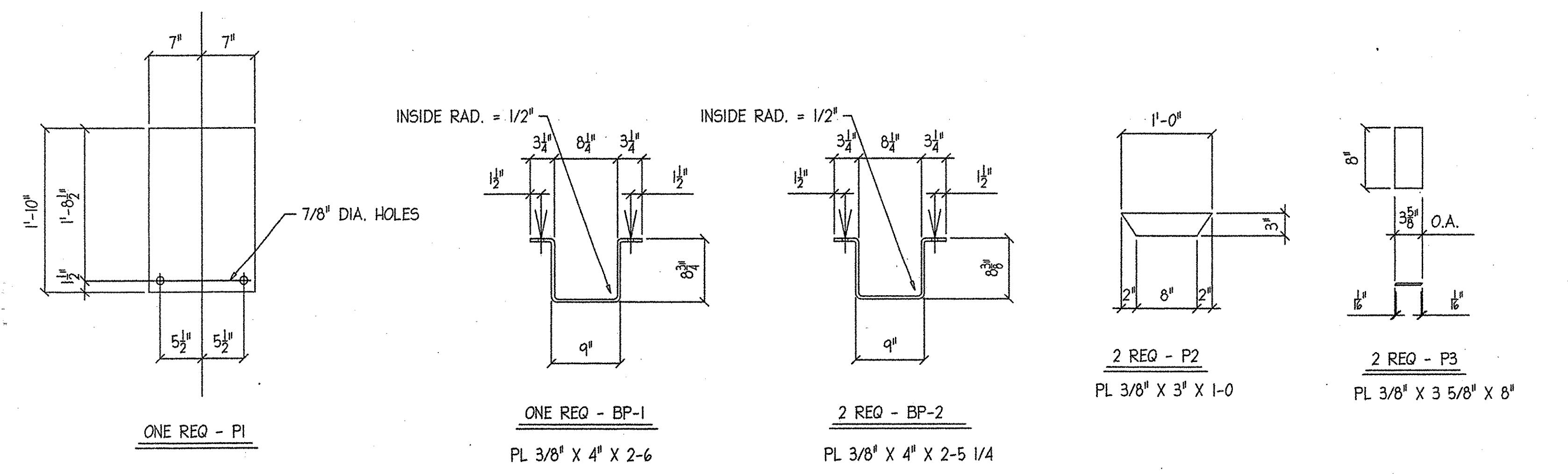


BILL OF MATERIAL				
QTY	MARK	SHAPE	LENGTH	REMARKS
DOWNSPOUT				
				GALV.
1	T1	TS 12 X 8 X 1/4	1 2	
1	T2	TS 8 X 8 X 1/4	1 3 1/8	
1	T3	TS 8 X 8 X 1/4	2 9	
1	T4	TS 8 X 8 X 1/4	5 1 13/16	
1	P1	PL 3/8" X 14"	1 10	
2	P2	PL 3/8" X 3"	1 0	
2	P3	PL 3/8" X 3 5/8"	0 8	
1	BP-1	BENT PL. 3/8" X 4"	2 6	
2	BP-2	BENT PL. 3/8" X 4"	2 5 1/4	
FIELD BOLTS				
8 - 3/4" DIA. X 9" WEDGE ANCHOR (S.S.)				
(6" MIN. EMBED.)				



- NOTES:**
- 1.) HOLLOW STRUCTURAL STEEL TUBING SHALL CONFORM TO A-500 OR A-501.
 - 2.) ALL PLATES, BAR, AND ANGLES SHALL CONFORM TO AASHTO M270 GR. 36.
 - 3.) DOWNSPOUT SHALL BE GALVANIZED IN ACCORDANCE WITH ASTM A-123 AFTER FABRICATION.
 - 4.) ALL BOLTS AND RELATED HARDWARE SHALL BE ASTM A-307 AND SHALL BE GALVANIZED IN ACCORDANCE WITH ASTM A-153 (AASHTO M232).

RECEIVED
 OK'D BY: *KMH* OK'D BY: *ELR*
 FEB 22 2006
 RESUBMIT APPROVED *VAs* Noted
 BY: *gpm* DATE: 3/9/06

REV. NO.	DATE	DESCRIPTION
1	2/13	Per <i>ELR</i>

HOLES: 13/16" (U.N.O.) DATE: 1-17-06
 PAINT: GALVANIZED

HARTFORD, VT.
 PROJECT NO. = BRO-BTN 2004 (1)

DOWNSPOUT

DATE SUB.	PROJECT	HARTFORD, VT. BRIDGE
	LOCATION	HARTFORD, VT.
	ARCHITECT	
DATE APP.	ENGINEER	
DATE DIST.	CUSTOMER	F.W. WHITCOMB

MERRIMACK MERRIMACK SHEET METAL
 119 HALL ST.
 CONCORD, N.H., 03301
 TEL. (603) 224-7766
 FAX. (603) 224-7925

DR BY: *KJM*
 REV BY:
 JOB NO. 0642
 DWG NO. F2