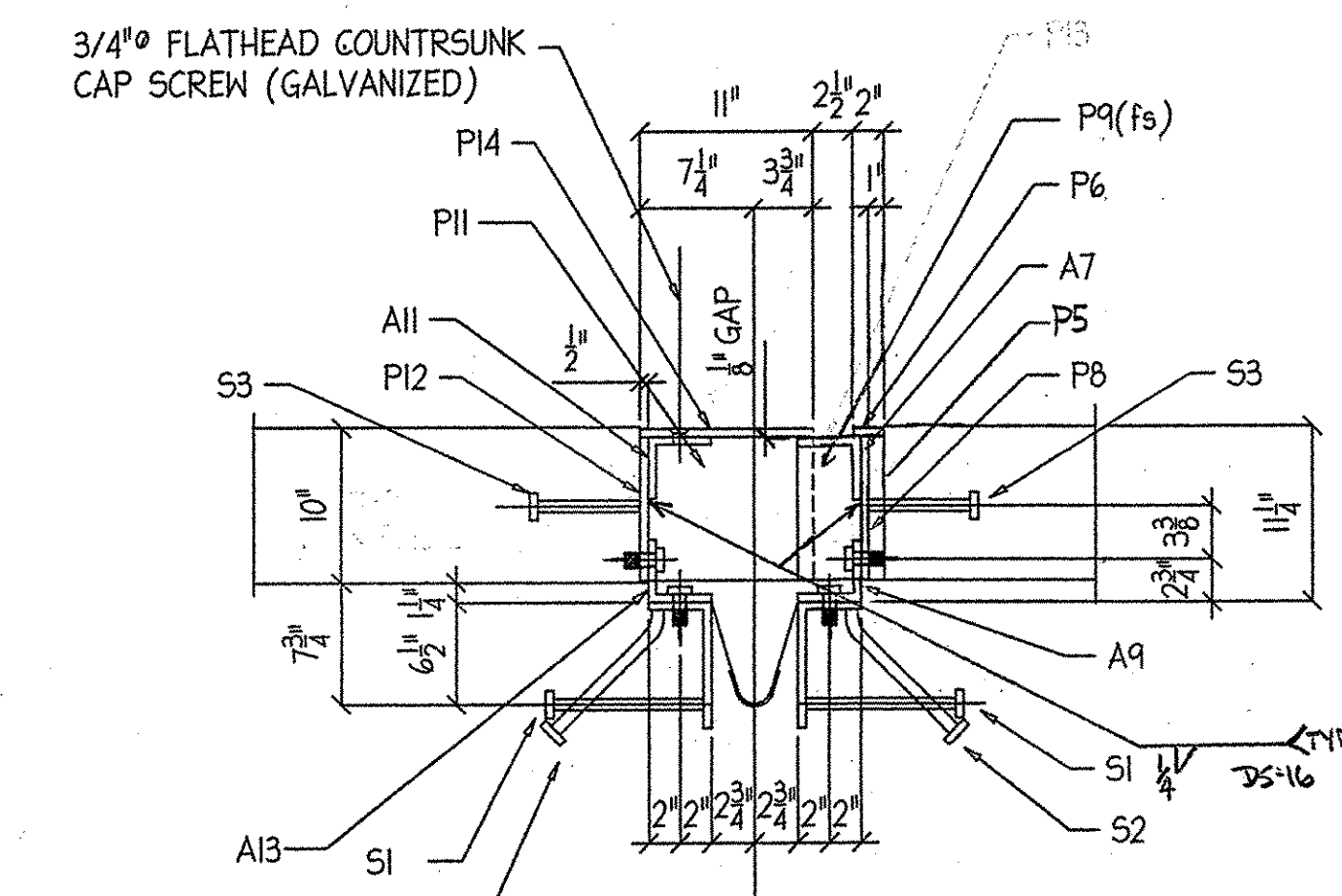
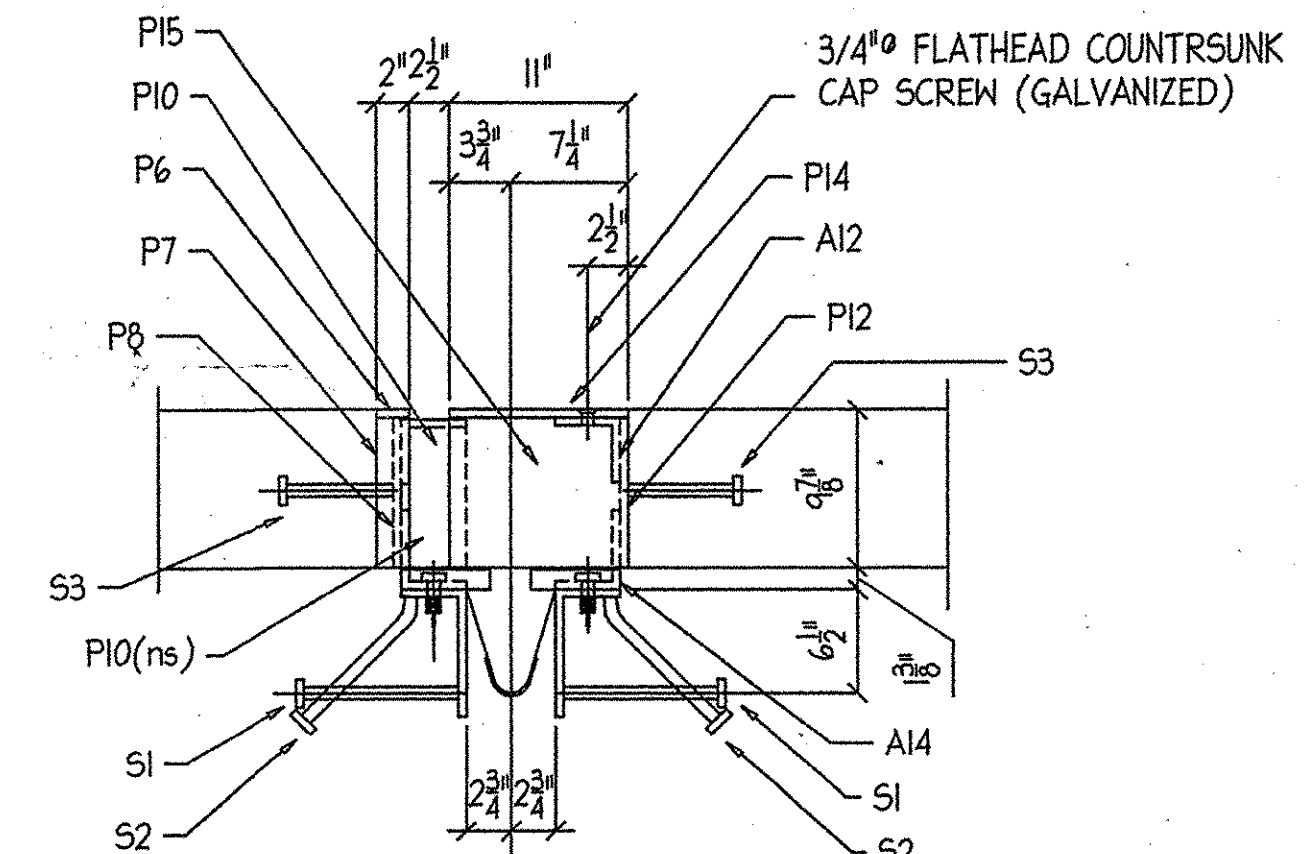


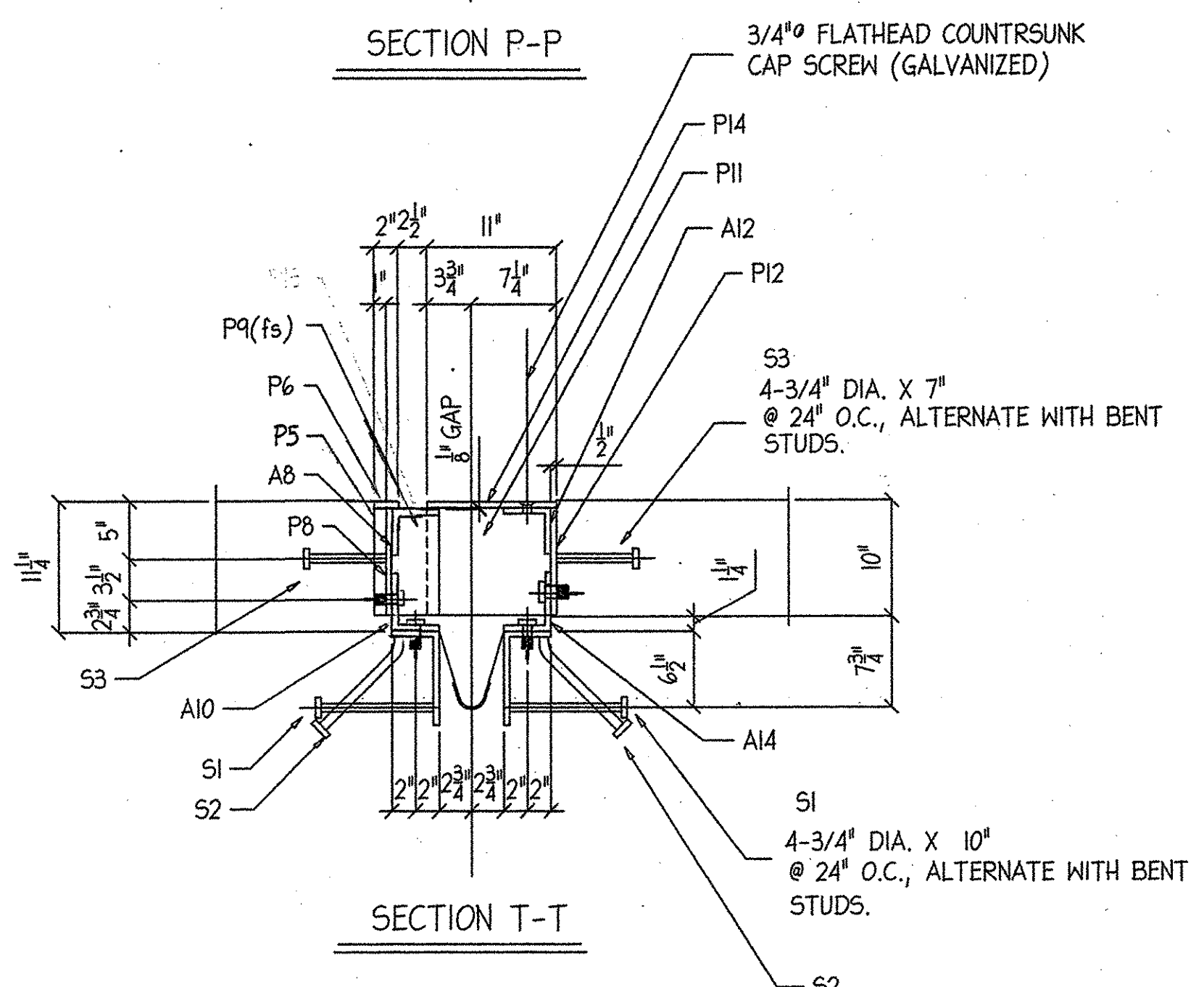
SECTION M-M



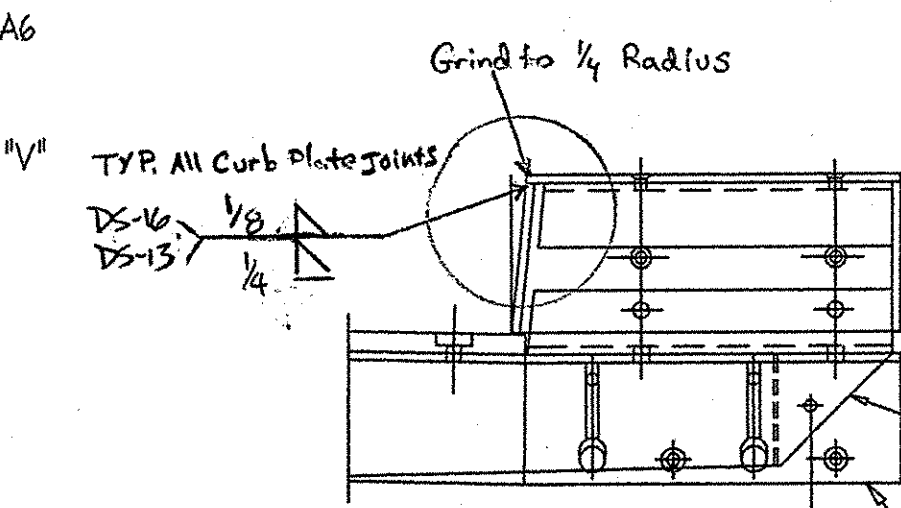
SECTION R-R



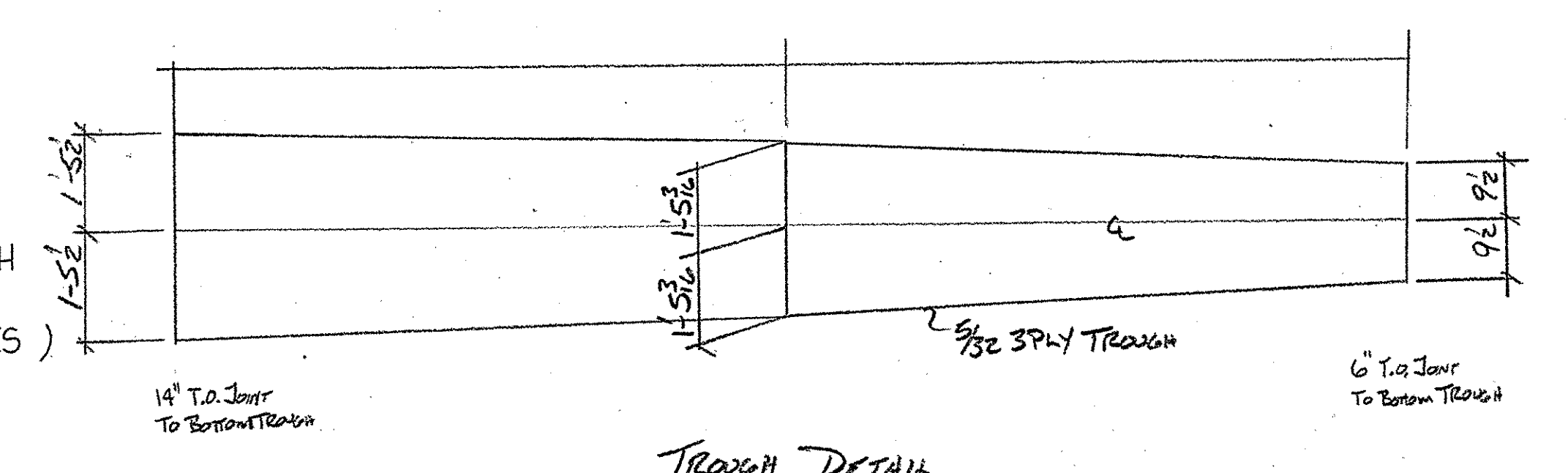
SECTION P-P



SECTION T-T



DETAIL - "V"



TROUGH DETAIL

NOTES:

- 1.) PREFORMED FABRIC MATERIAL SHALL BE CONTINUOUS AND SHALL CONFORM TO SUBSECTION 707.07.
- 2.) BUTYL RUBBER TAPE SHALL CONFORM TO AASHTO SPEC. M-198, TYPE II.
- 3.) ALL STEEL COMPONENTS SHALL BE AASHTO M270, GRADE 36, GALVANIZED OR METALIZED AS PER SUBSECTION 506.15 (a) OR (b) UNLESS OTHERWISE NOTED.
- 4.) THE L8 X 4 X 1/2 ANGLES SHALL BE FURNISHED AS ONE CONTINUOUS PIECE. THE 1 1/4\" X 5 1/2\" BARS EACH SIDE OF THE JOINT SHALL BE PROVIDED IN TWO EQUAL LENGTHS.
- 5.) A DRIP BEAD OF 1/4\" X 7\" STRIP OF PREFORMED MATERIAL SHALL BE CEMENTED TO THE BOTTOM OF THE FABRIC TROUGH USING AN ADHESIVE APPROVED BY THE MANUFACTURER. THE DRIP BEAD SHALL BE APPLIED 1\" FROM THE DOWNSPOUT END OF THE TROUGH.
- 6.) THE EXPANSION JOINT SHALL BE SHOP ASSEMBLED AND SHIPPED AS ONE UNIT.
- 7.) BENEATH EDGES TO 1/16\" RADIUS / SEAL WHEN EXPOSED JOINTS FOR GALV.

HARTFORD, VT.
PROJECT NO. = BRO-BTN 2004 (1)

RECEIVED
CHKD BY *KMH* OK'D BY *M.G.*
FEB 22 2006
SUBMITTED BY *CPW* APPROVED As Noted DATE 3/1/06

EXPANSION JOINT (EJ-1)@ ABUTMENT "A"		DR BY	KJM
HARTFORD, VT. BRIDGE		REV BY	<i>Jr</i>
DATE SUB.	PROJECT	LOCATION	HARTFORD, VT.
DATE APP.	ARCHITECT	ENGINEER	
DATE DIST.	CUSTOMER	F.W. WHITCOMB	
MERRIMACK SHEET METAL 119 HALL ST. CONCORD, N.H., 03301		JOB NO.	0642
		DWG NO.	E2
MISCELLANEOUS IRON STRUCTURAL STEEL FABRICATORS		TEL.	(603) 224-7766
		FAX.	(603) 224-7925

REV. NO.	DATE	DESCRIPTION
1	2/13	PER ENL
HOLES: 13/16\" (U.N.O.) DATE: 1-17-06		
PAINT: GALVANIZED		