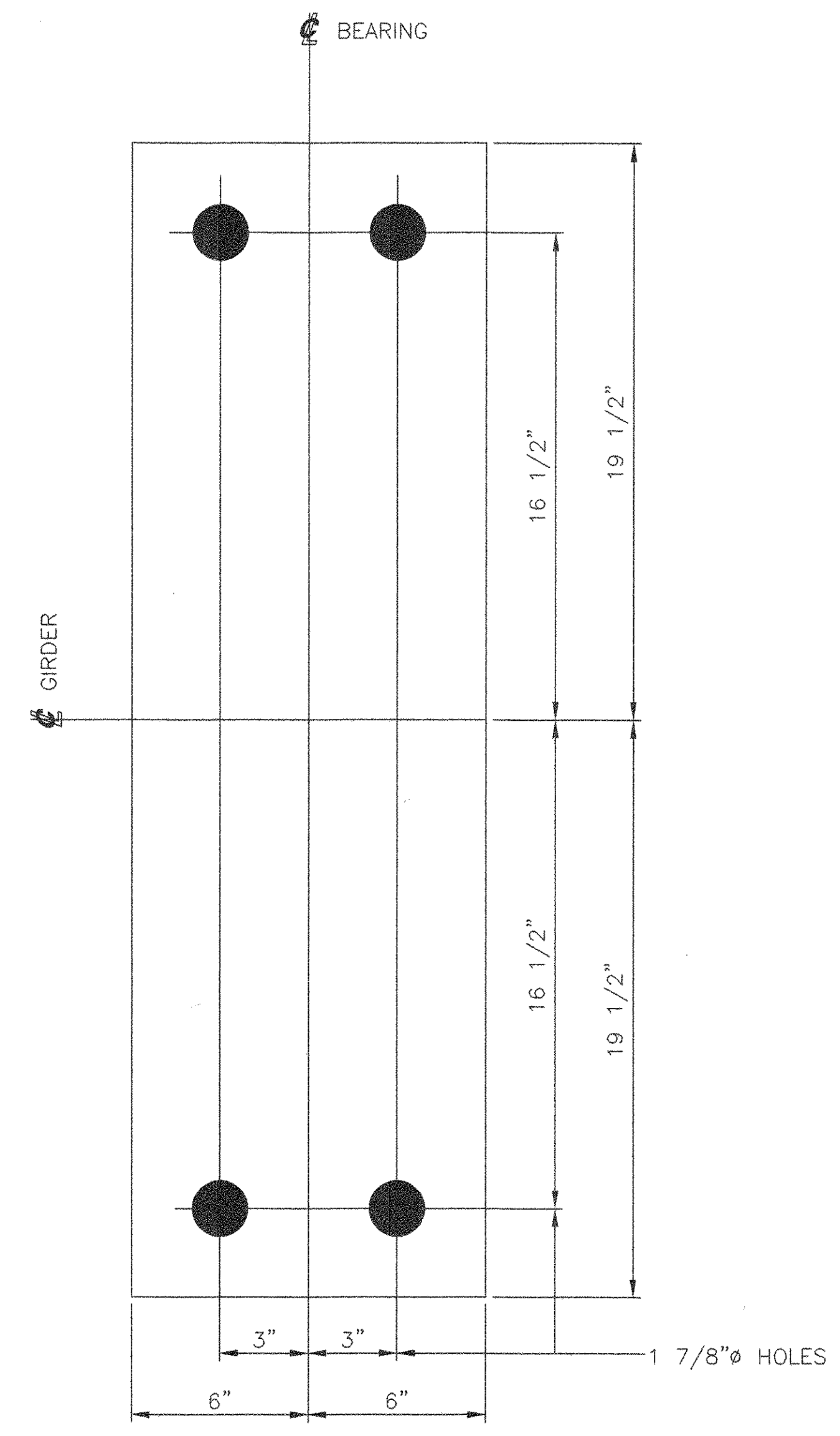
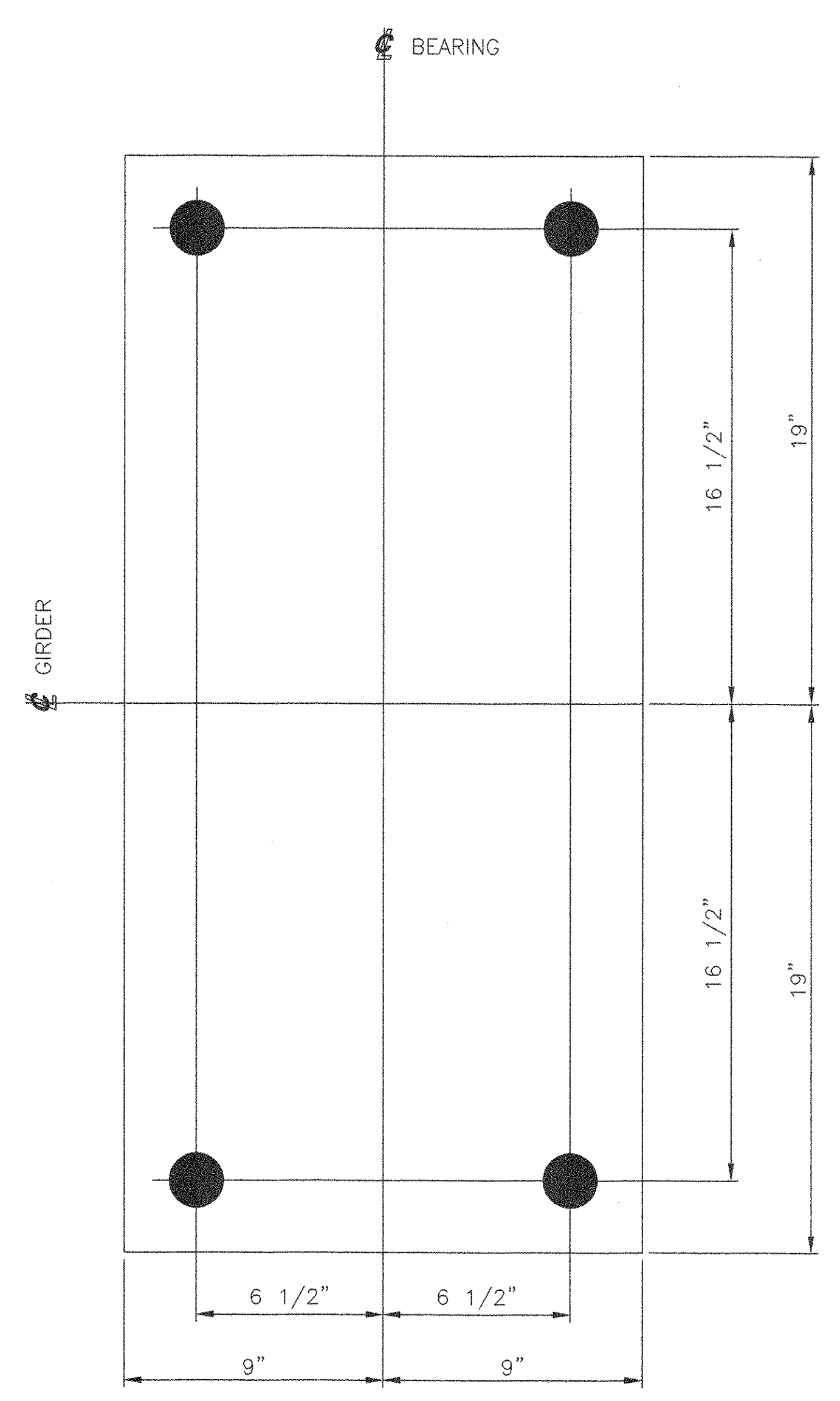


MARK	QTY	DESCRIPTION	IN	16ths	FAB MARK	MILL MARK	WEIGHT
BP1	4	PREF. PAD 1/8" x 12"	39	0		MIL-C-882	18
BP2	4	PREF. PAD 1/8" x 12" 18"	38	0		MIL-C-882	19
AB1	16	RD 1 1/2"φ	20	0	GALV.	F1554 GR. 55	160
AB2	16	RD 1 1/2"φ	22	0	GALV.	F1554 GR. 55	176
W1	32	PL 3/8" x 3"	3	0		GALV.	31
	32	1 1/2"φ HVY. HEX NUTS			GALV.	A192-2H	30

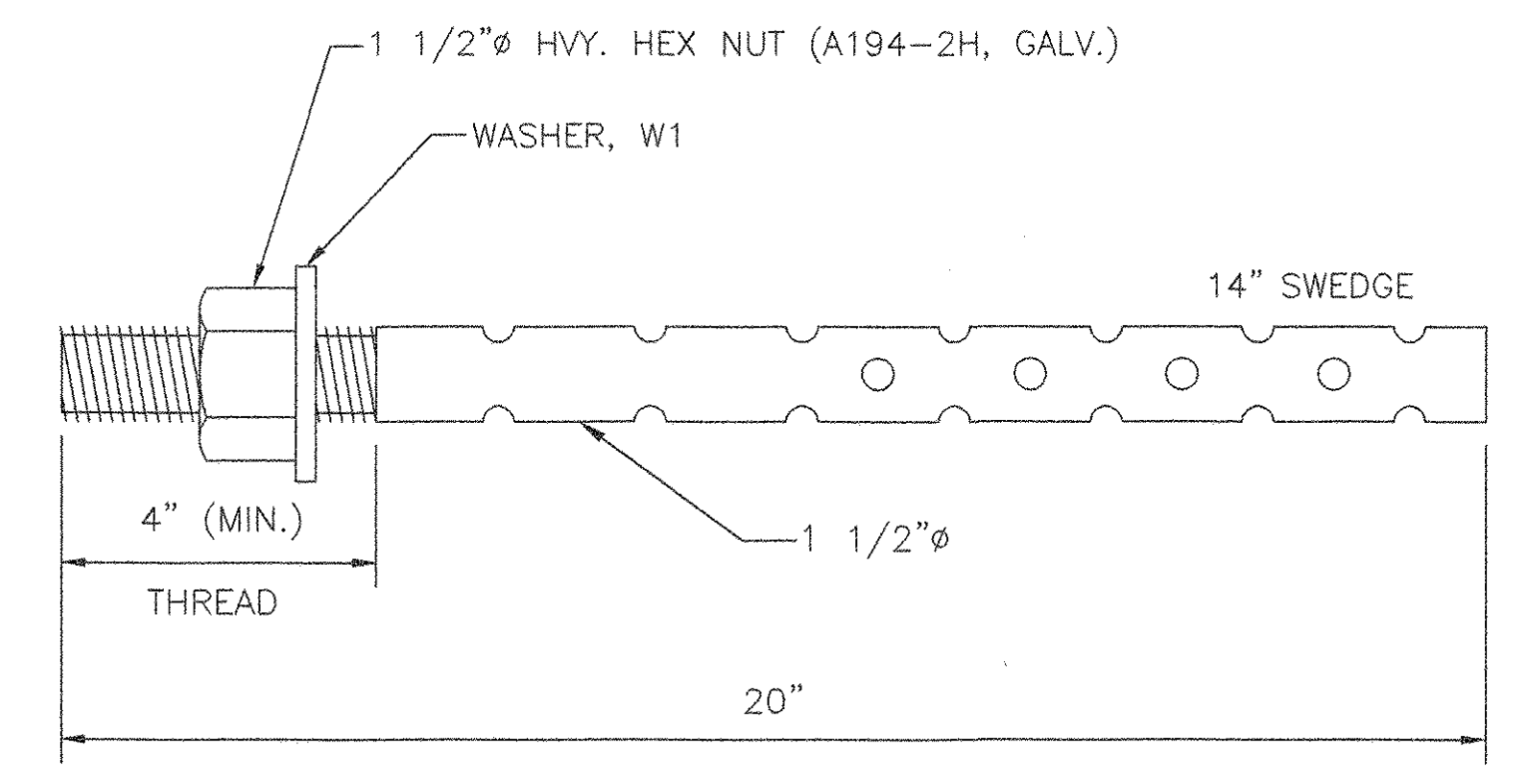
TOTAL = 433



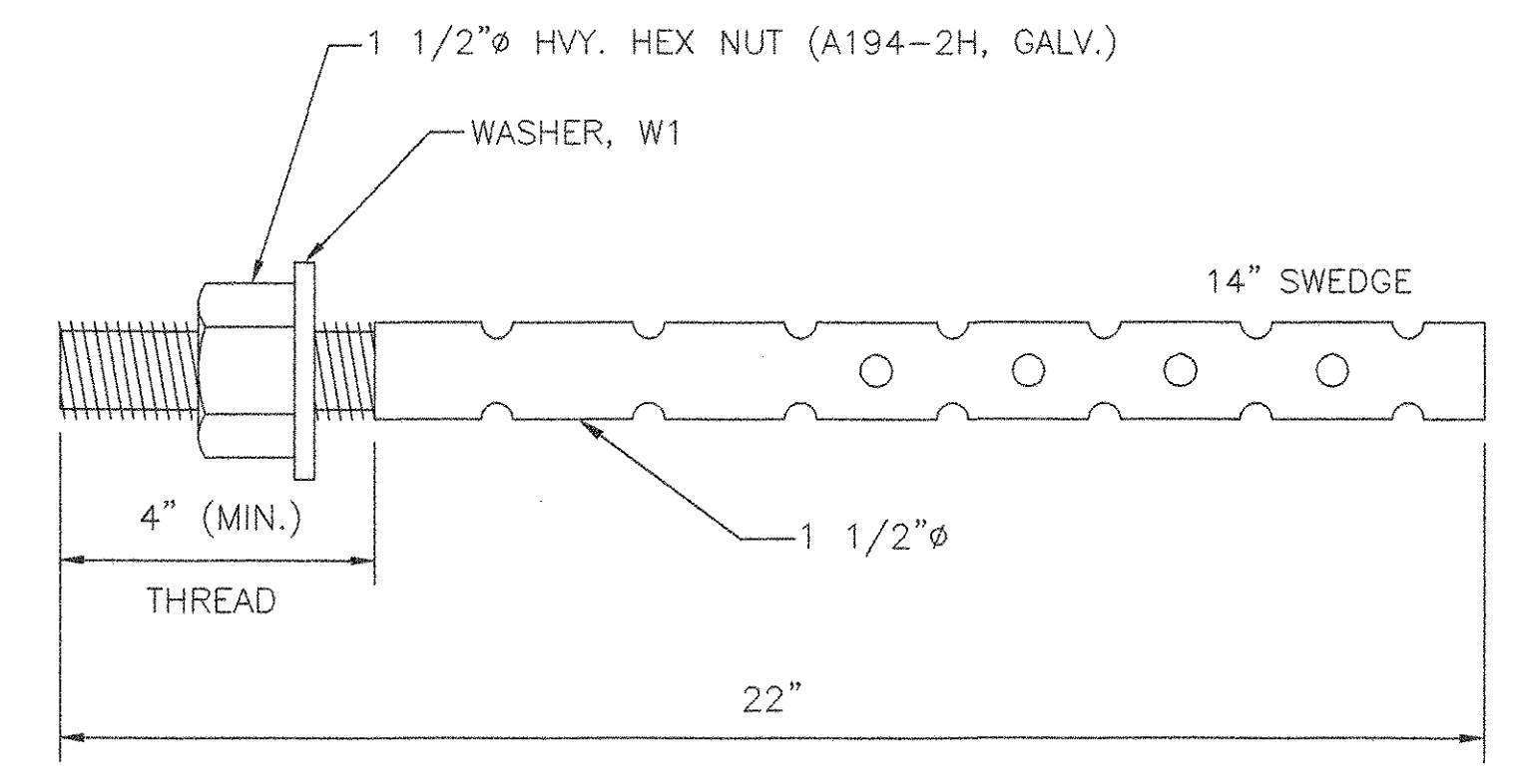
4 BEARING PADS, BP1
 PREFORMED FABRIC PAD 1/8" x 12" x 39"
 (MIL-C-882)
 USE WITH
 EXPANSION BEARING ASSEMBLY, EBA-1



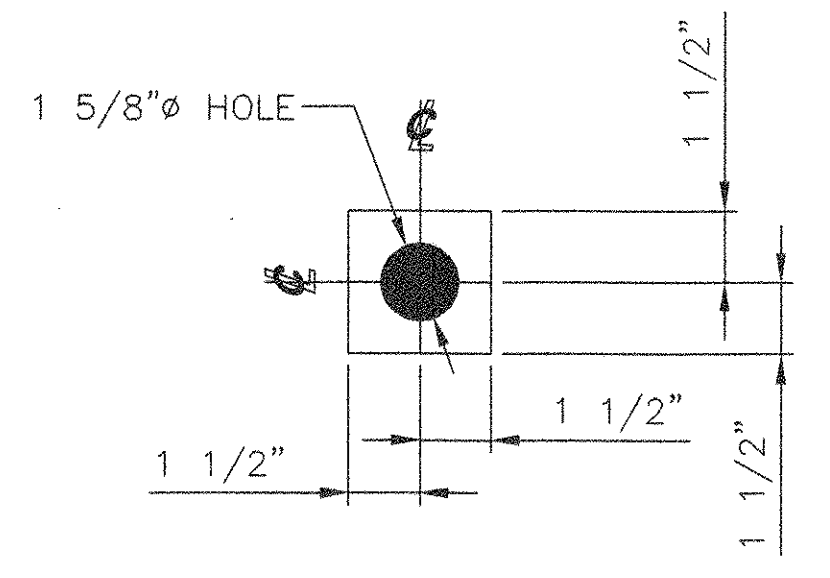
4 BEARING PADS, BP2
 PREFORMED FABRIC PAD 1/8" x 18" x 38"
 (MIL-C-882)
 USE WITH
 FIXED BEARING ASSEMBLY, FBA-1



16 ANCHOR BOLTS, AB1
 PL 1 1/2"φ x 20"
 F1554 GR.55 (GALV.)
 MIN. EMBEDMENT=15"
 LOCATE AT
 PIER 1



16 ANCHOR BOLTS, AB2
 PL 1 1/2"φ x 22"
 F1554 GR.55 (GALV.)
 MIN. EMBEDMENT=15"
 LOCATE AT
 PIER 2



32 PLATE WASHERS, W1
 PL 3/8" x 3" x 3"
 (GALV.)
 USE WITH
 ANCHOR BOLTS, AB1 & AB2

SEE SHEET AS1 FOR ASSEMBLY NOTES.
 SEE SHEET I FOR SHOP NOTES.

VERMONT
 AGENCY OF TRANSPORTATION

HARTFORD
 PROJ. NO. BRO-BTN 2004(1)

RECEIVED
 OCT 27 2005
 RESUBMIT APPROVED *As noted*
 BY *OPW* DATE *11/8/05*

COSMEC, INC. 70 SOUTH STREET
 WALPOLE, MA. 02081

SCALE: 1/4" = 1" DRAWN BY: JEP CHECKED BY: PJM
 SHEET: 4 OF 4 DATE: 10/05 DATE 10/05

COSMEC BEARINGS

REV.	BY:	DATE	CHKD BY:	DATE	CUSTOMER	S.O. NUMBER	DRAWING NUMBER	REV.
-					F. W. WHITCOMB	60423	4520	0