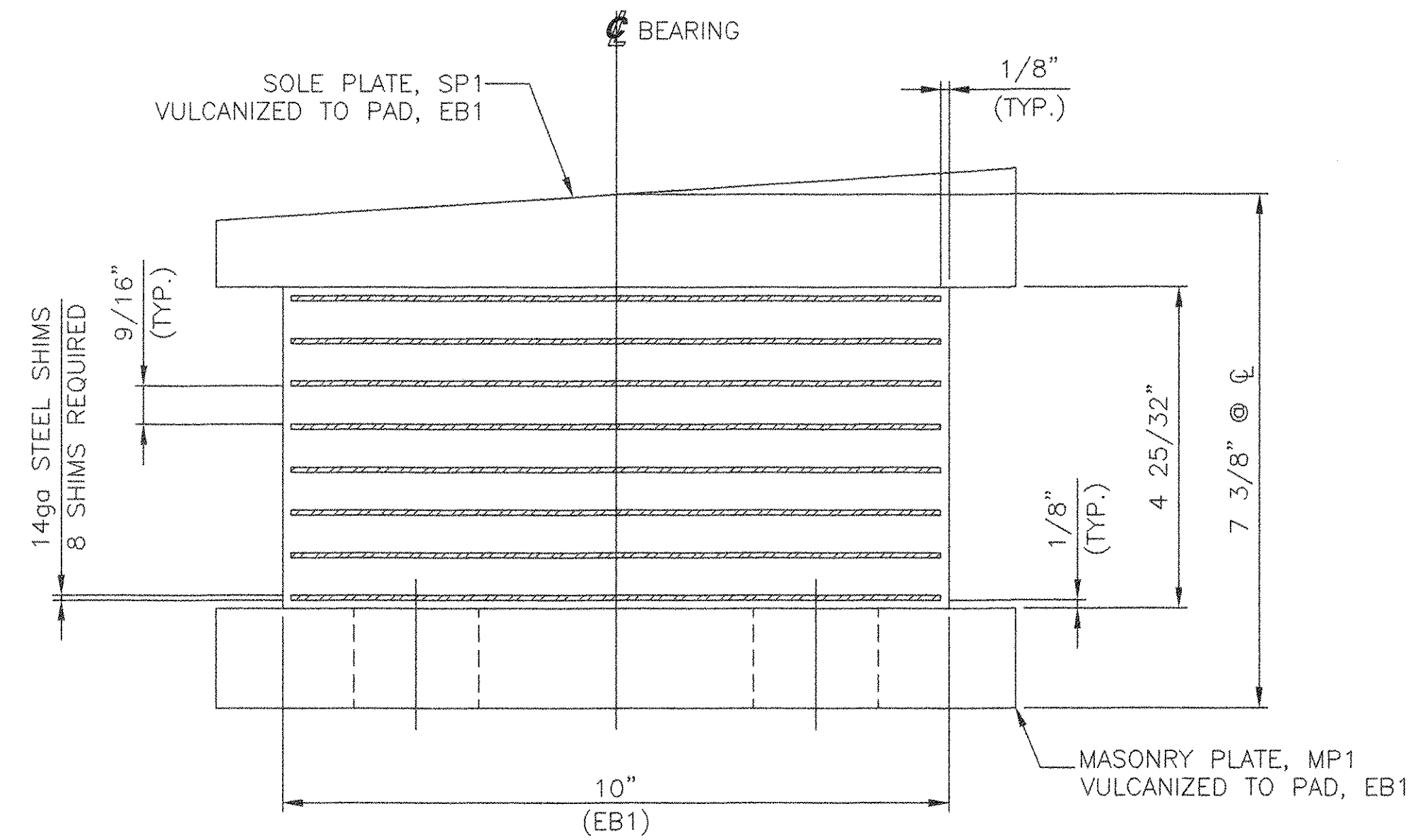
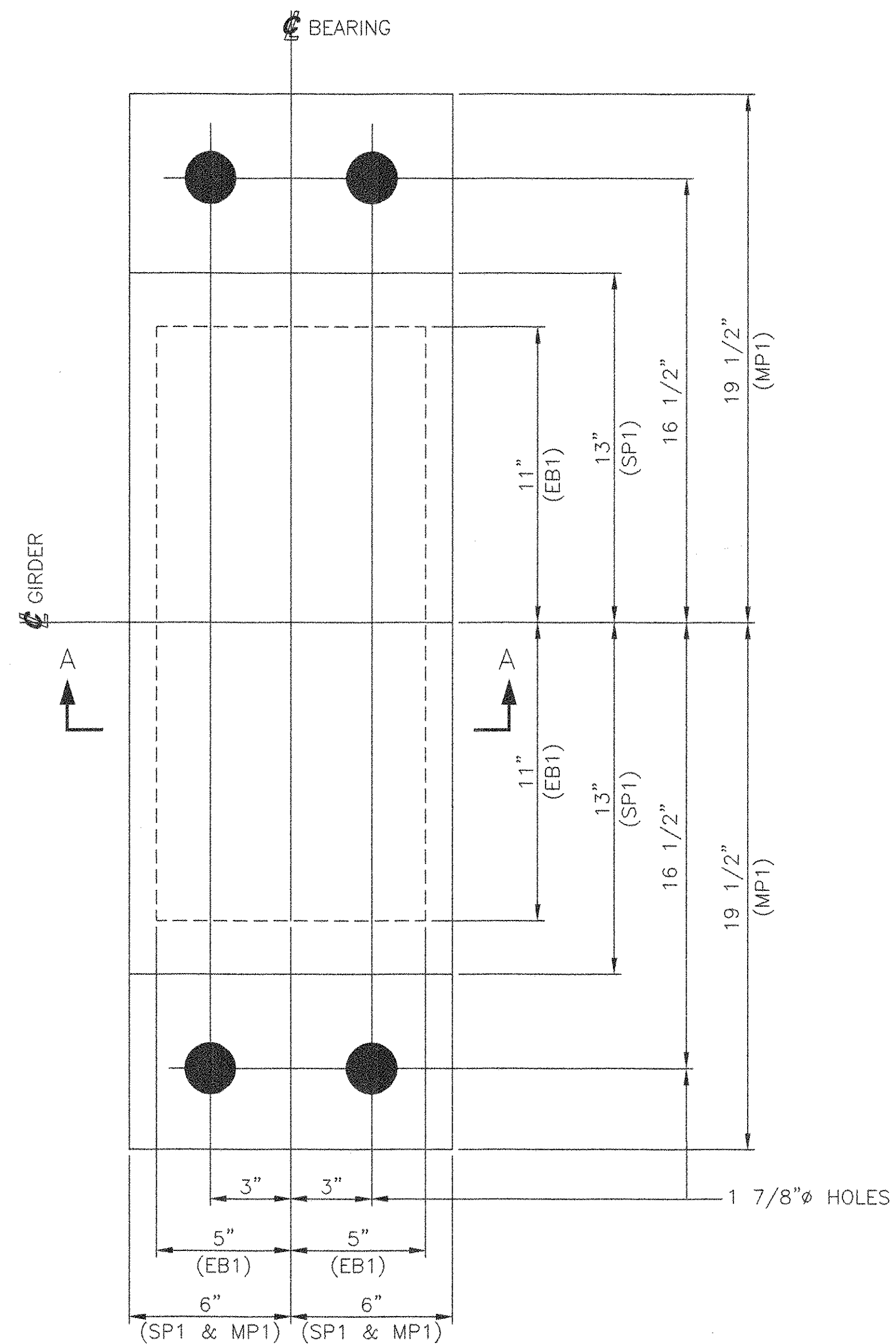


MARK	QTY	DESCRIPTION	IN	16ths	FAB MARK	MILL MARK	WEIGHT
EB1	4	LAM. ELAST. PAD 4 25/32" x 10"	22	0	.	60 DURO.	328
.	4	SP1	420
.	4	MP1	796

TOTAL = 1544



SECTION A-A
(N.T.S.)
SPACE SHIMS EQUALLY

4 ELASTOMERIC BEARING ASSEMBLIES, EB1A

LAMINATED ELASTOMERIC BEARING PAD, 4 25/32" x 10" x 22"
SHIMS - ASTM A36 OR EQUIVALENT
ELASTOMER - 60 DUROMETER, GRADE 3^{1/2} NEOPRENE - LOW TEMPERATURE RANGE: -30° - 120° F
IN ACCORDANCE WITH AASHTO DIV. II, 18.4.5.1 SECTION 18
VULCANIZED TO
SOLE PLATE SP1
AND
MASONRY PLATE, MP1

SHEAR MODULUS BETWEEN 140 AND 175 PSI

SEE SHEET AS1 FOR ASSEMBLY NOTES.
SEE SHEET 1 FOR SHOP NOTES.

VERMONT
AGENCY OF TRANSPORTATION

HARTFORD
PROJ. NO. BRO-BTN 2004(1)

RECEIVED
OK'D BY Kmt OK'D BY HIS
OCT 27 2005
RESUBMIT _____ APPROVED As Noted
BY OPW DATE 11/8/05

COSMEC, INC. 70 SOUTH STREET
WALPOLE, MA 02081
SCALE: 1/4" = 1"
SHEET: 2 OF 4
DRAWN BY: JEP
DATE: 10/05
CHECKED BY: PJM
DATE: 10/05
COSMEC BEARINGS

REV.	BY	DATE	OK'D BY	DATE	CUSTOMER	S.O. NUMBER	DRAWING NUMBER	REV.
-					F. W. WHITCOMB	60423	4518	0