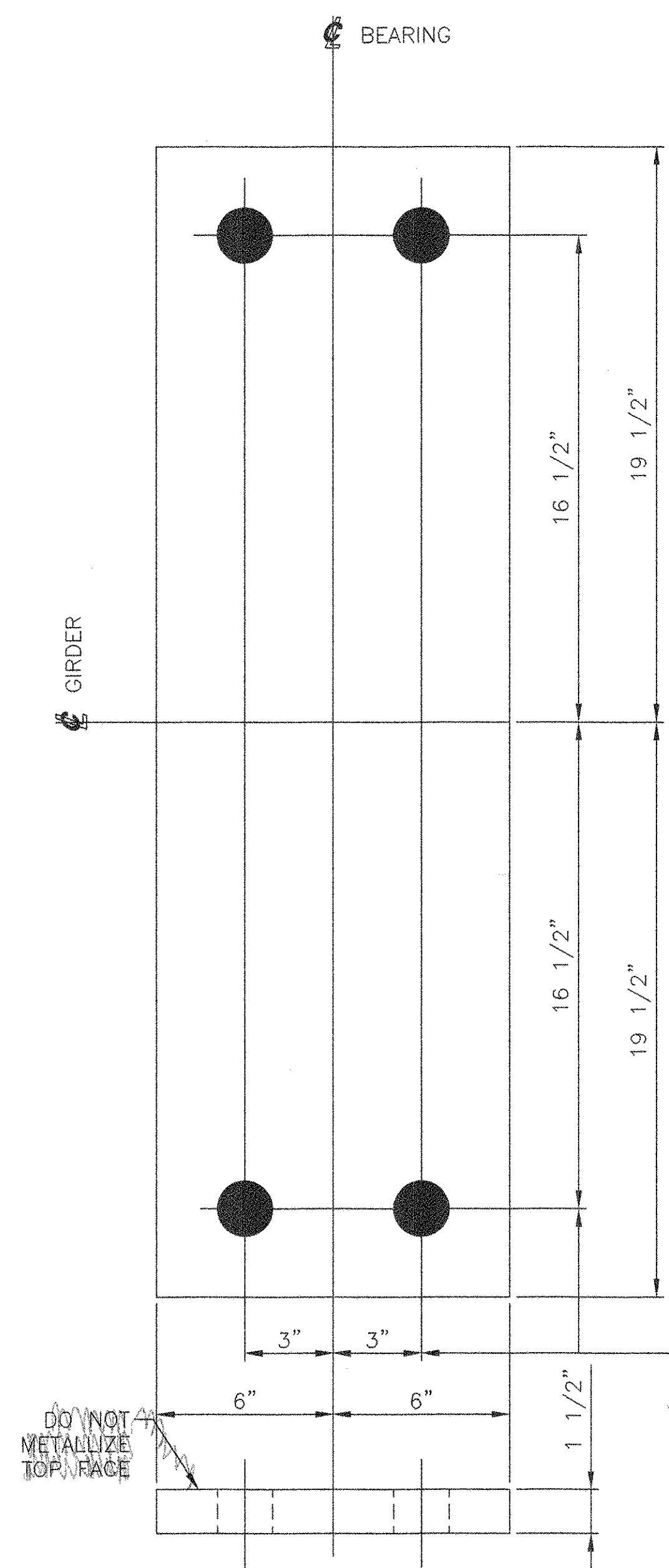
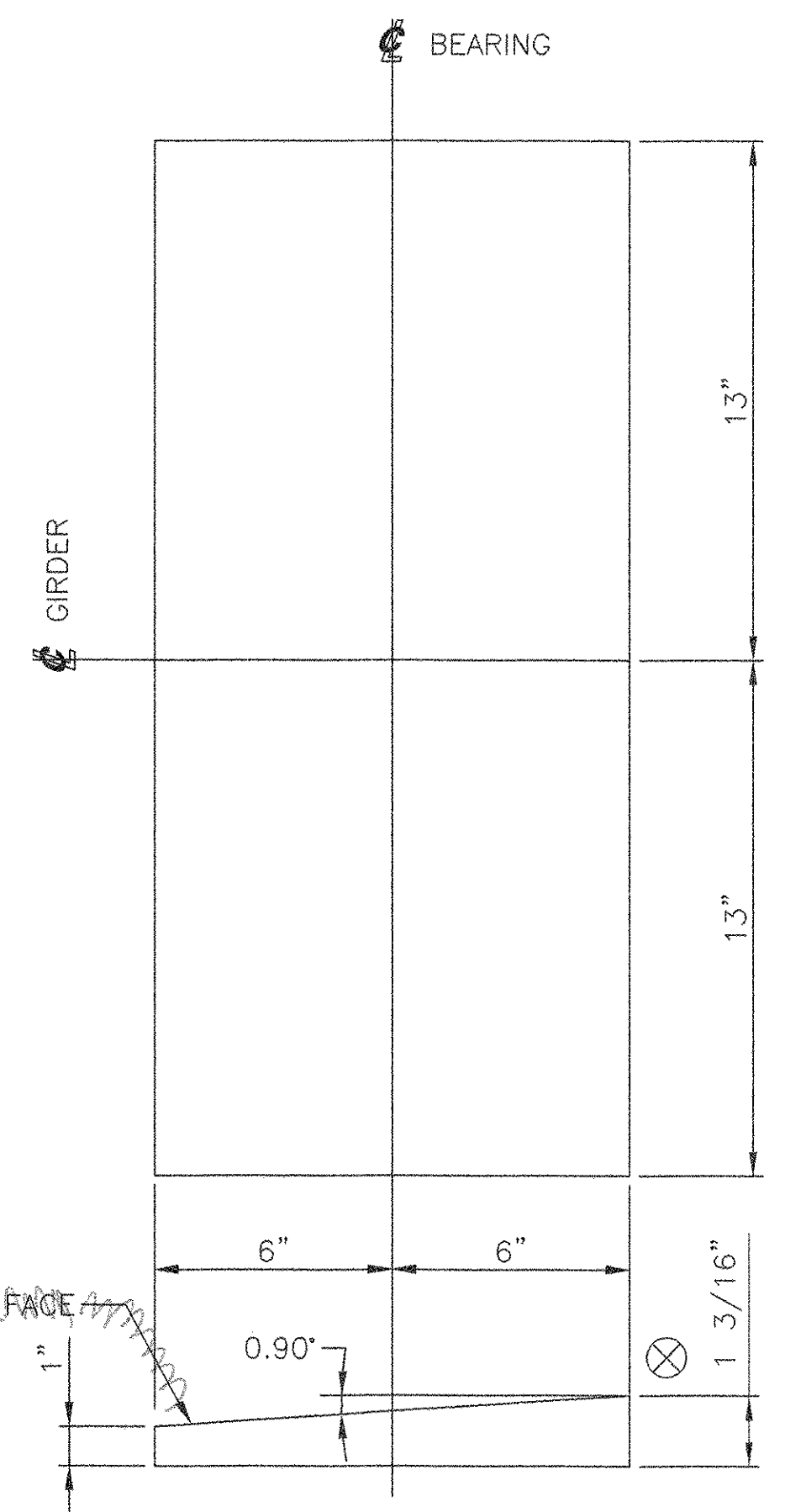


MARK	QTY	DESCRIPTION	IN	16ths	FAB MARK	MILL MARK	WEIGHT
MP1	4	PL 1 1/2" x 12"	39	0		METALLIZED	796
SP1	4	PL 1 3/16" x 12"	26	0		METALLIZED	420
KP1	8	L 6" x 6" x 1/2"	12	0		METALLIZED	157
	24	PL 1/2" x 4 5/8"	4	10	kpa1	METALLIZED	73

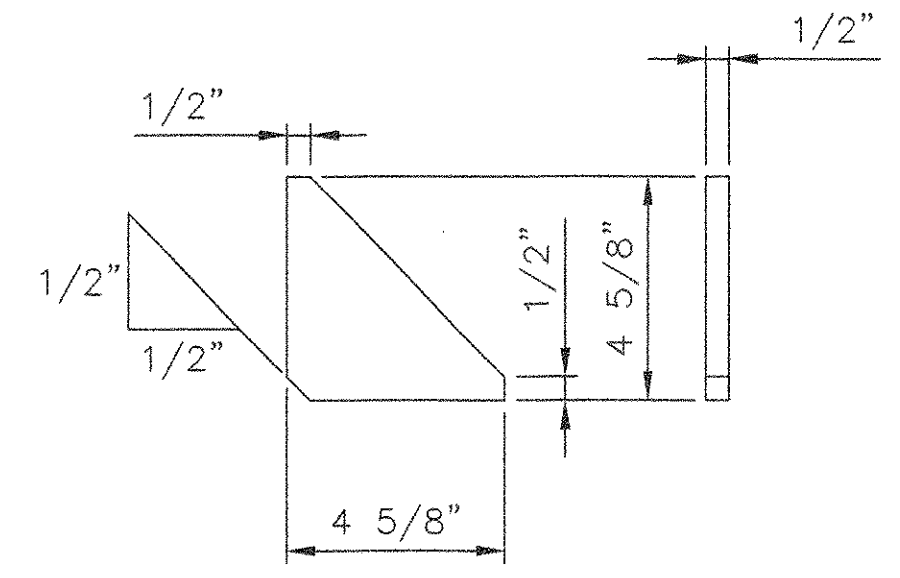
TOTAL = 1446



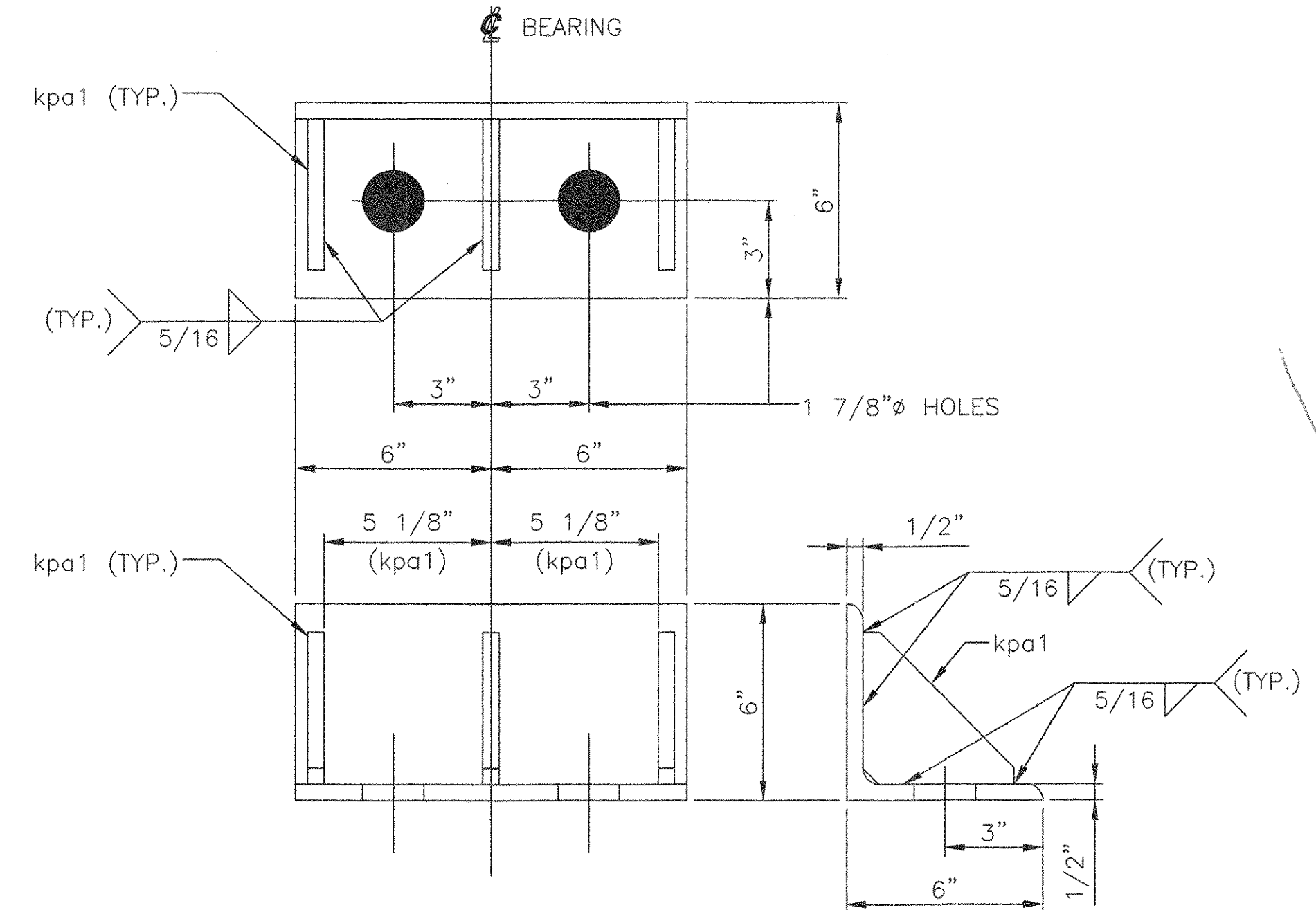
**4 EXPANSION MASONRY PLATES, MP1**  
 PL 1 1/2" x 12" x 39"  
 (TO BE METALLIZED AFTER MASONRY PLATE IS VULCANIZED TO ELASTOMERIC BEARING PAD.)  
 USE WITH EXPANSION BEARING ASSEMBLY, EBA-1



**4 EXPANSION SOLE PLATES, SP1**  
 PL 1 3/16" x 12" x 26"  
 (TO BE METALLIZED AFTER SOLE PLATE IS VULCANIZED TO ELASTOMERIC BEARING PAD.)  
 USE WITH EXPANSION BEARING ASSEMBLY EBA-1  
 SOLE PLATE TO BE FIELD WELDED TO GIRDER.  
 DO NOT METALLIZE TOP FACE.



**24 KEEPER PLATES, kpa1**  
 PL 1/2" x 4 5/8" x 4 5/8"  
 (METALLIZED)  
 USE WITH KEEPER ANGLE, KP1



**8 KEEPER ANGLES, KP1**  
 L 6" x 6" x 1/2" x 12"  
 (METALLIZED)  
 USE WITH EXPANSION BEARING ASSEMBLY EBA-1

**SHOP NOTES:**

- MATERIAL NOTED AS AASHTO M270 GR.50 MAY BE EITHER AASHTO M270 GR.50, ASTM A709 GR.50 OR A572 GR.50.
- MATERIAL NOTED AS GALVANIZED SHALL BE GALVANIZED IN ACCORDANCE WITH AASHTO M232 (ASTM A123) OR AASHTO M111 (ASTM A153) AS APPLICABLE.
- ALL BEARING DEVICES SHALL BE METALLIZED IN ACCORDANCE WITH SUBSECTIONS 531.04(b) AND 506.04(c) AND SEALED WITH AN APPROVED SEALANT IN ACCORDANCE WITH SUBSECTION 531.04(b) OF THE STANDARD SPECIFICATION. *506.15(b)*
- PREFORMED FABRIC BEARING PADS SHALL BE FABRICATED IN ACCORDANCE WITH AASHTO DIV. II SPEC. 18.4.10.1.
- LAMINATED ELASTOMERIC BEARING PADS SHALL BE IN ACCORDANCE WITH AASHTO STANDARD SPECIFICATION FOR HIGHWAY BRIDGES, 1996 EDITION AND ITS LATEST REVISIONS AND AASHTO M251M.
- ALL SURFACES OF PLATES SHALL BE SMOOTH AND STRAIGHT. ALL CORNERS AND EDGES SHALL BE GROUND TO A 1/16 INCH RADIUS.
- SHOP SHALL MARK HIGH SIDE OF PLATES.
- COSMEC, INC. REPRESENTATIVE: MR. MATT McANDREWS (508) 668-6600

SEE SHEET AS1 FOR ASSEMBLY NOTES.

**VERMONT**  
 AGENCY OF TRANSPORTATION

HARTFORD  
 PROJ. NO. BRO-BTN 2004(1)

**COSMEC, INC.** 70 SOUTH STREET  
 WALPOLE, MA. 02081

SCALE: 1/4" = 1"	DRAWN BY: JEP	CHECKED BY: PJM
SHEET: 1 OF 4	DATE: 10/05	DATE 10/05
<b>COSMEC BEARINGS</b>		
CUSTOMER: F. W. WHITCOMB	S.O. NUMBER: 60423	DRAWING NUMBER: 4517
REV.:	BY:	DATE:

**RECEIVED**  
 OK'D BY: *kml* OK'D BY: *HIS*  
 OCT 27 2005  
 RESUBMIT APPROVED *As Noted*  
 BY: *CPW* DATE: *11/8/05*

REV.	BY	DATE	OK'D BY	DATE
---	---	---	---	---