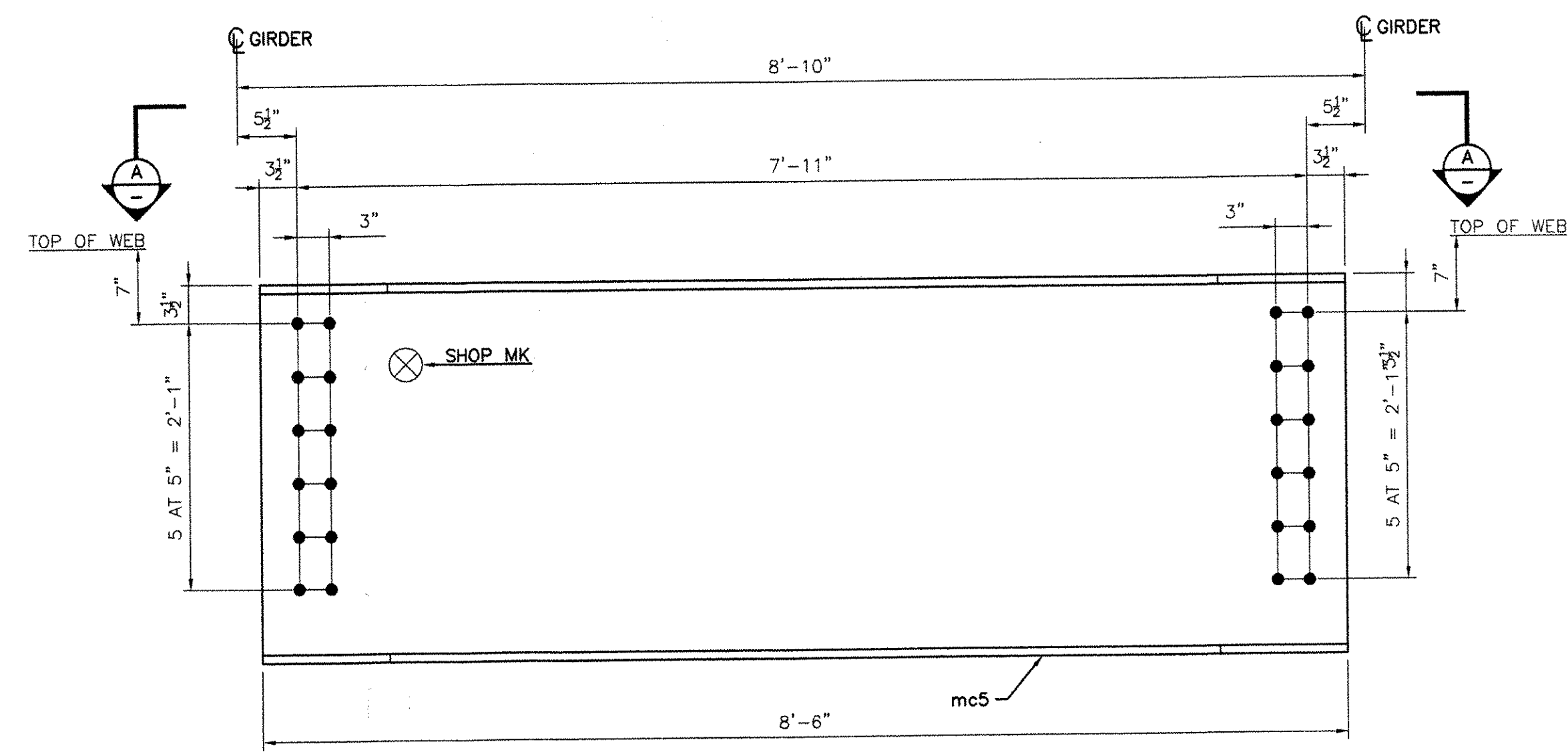
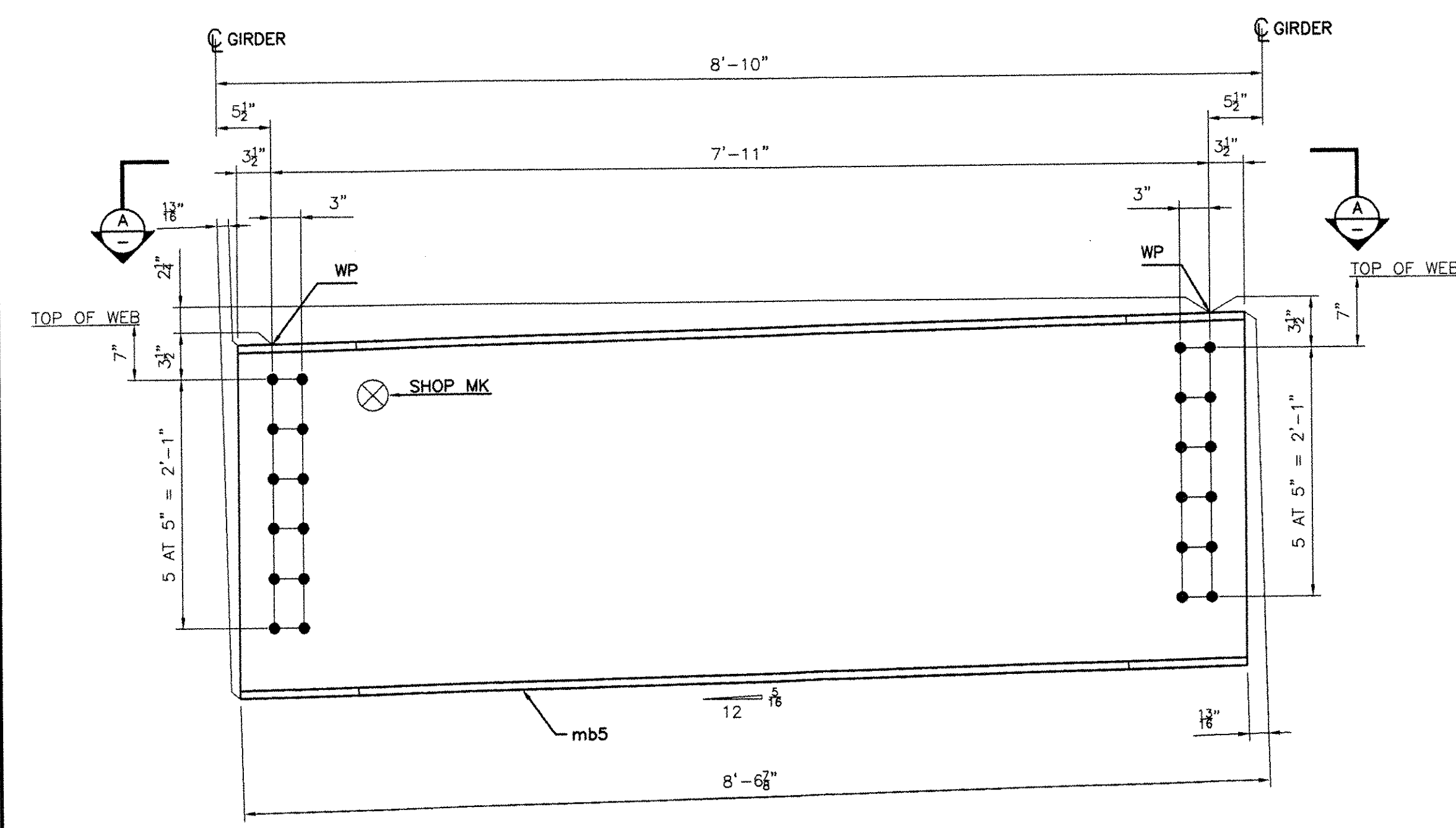


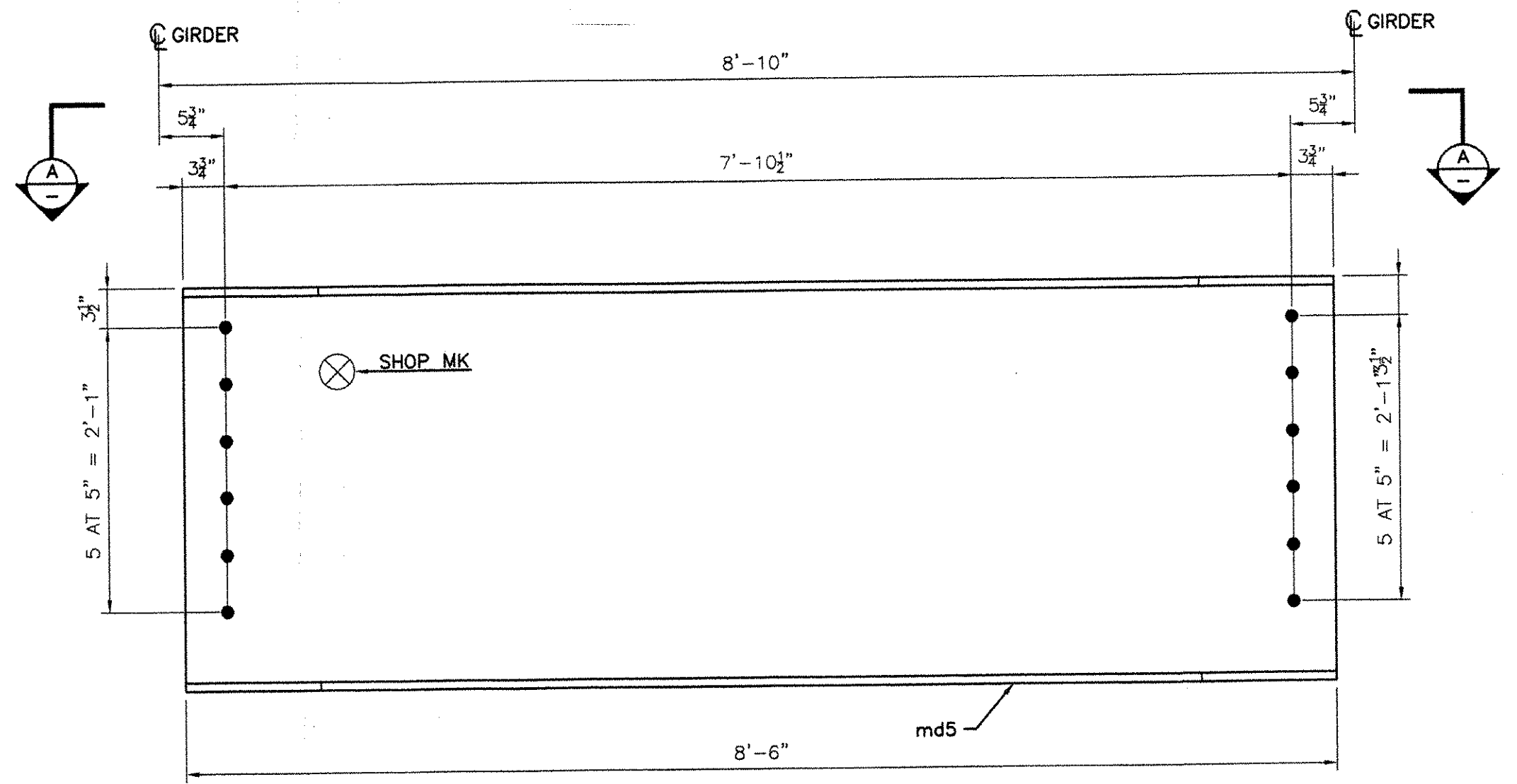
TO BE PAINTED — 5D1 (1 REQ'D)  
5D5 (1 REQ'D)



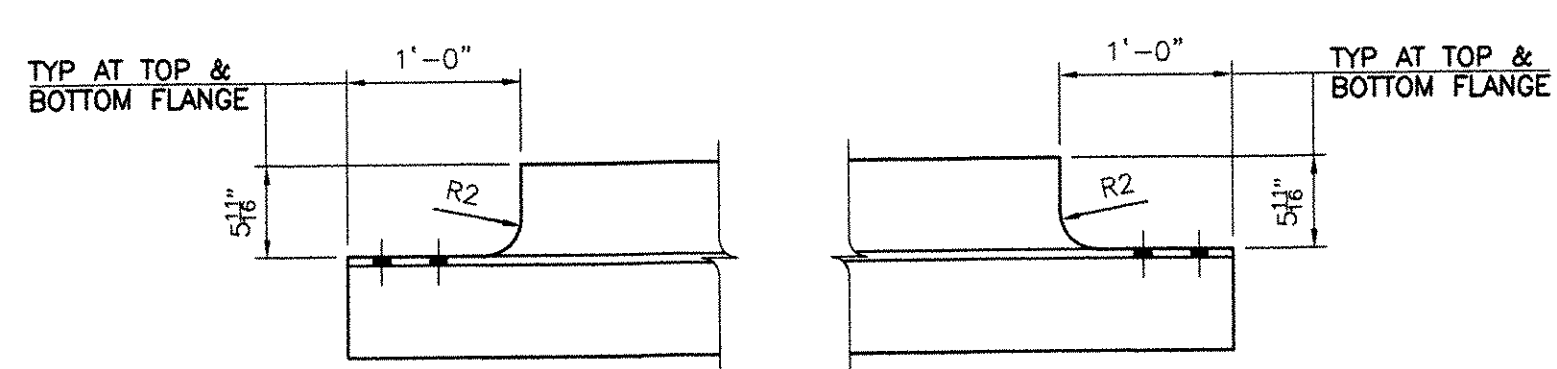
TO BE PAINTED — 5D3 (1 REQ'D)  
5D7 (1 REQ'D)



TO BE PAINTED — 5D2 (1 REQ'D)  
5D6 (1 REQ'D)



5D4 (21 REQ'D)



SECTION A-A

NOTICE  
This drawing shall not be used or reproduced in any manner, nor shall any similar drawings or structures be made therefrom, nor shall the information thereon be used for any purpose other than that for which it is released without the written consent of an officer of EASTERN BRIDGE LLC.

BILL OF MATERIAL										
Drawing Number	Revision Number	Ship Mark	Piece Mark	Qty	Type of Material	Size of Material	Grade	Length	Finish	Notes
5		5D1	mc5	1	W Wide Flng	36x135	A709-GR50W	8'-6 7/8		11
								weight:	1157 lbs	
5		5D2	mb5	1	W Wide Flng	36x135	A709-GR50W	8'-6 7/8		11
								weight:	1157 lbs	
5		5D3	mc5	1	W Wide Flng	36x135	A709-GR50W	8'-6		11
								weight:	1148 lbs	
5		5D4	md5	21	W Wide Flng	36x135	A709-GR50W	8'-6		11
								weight:	24098 lbs	
5		5D5	mc5	1	W Wide Flng	36x135	A709-GR50W	8'-6 7/8		11
								weight:	1157 lbs	
5		5D6	mb5	1	W Wide Flng	36x135	A709-GR50W	8'-6 7/8		11
								weight:	1157 lbs	
5		5D7	mc5	1	W Wide Flng	36x135	A709-GR50W	8'-6		11
								weight:	1148 lbs	

NOTES:  
1- GENERAL NOTES: SEE GN1  
2- PAINT: SEE GN1  
3- HOLES: 15/16" (U.N.O.)

RECEIVED  
OK'D BY: KML OK'D BY: \_\_\_\_\_  
SEP 20 2005  
RESUBMIT \_\_\_\_\_ APPROVED \_\_\_\_\_  
BY: APW DATE: 10/31/05

RESERVED FOR STAMPS

REV	DATE	DESCRIPTION	QTY	DATE	ISSUED TO	FOR

PROJECT: BRIDGE 8 OVER THE WHITE RIVER, PROJECT NO BRO-BTN 2004(1)  
LOCATION: TOWN OF HARTFORD, COUNTY OF WINDSOR, VERMONT  
ENGINEER: STATE OF VERMONT, AGENCY OF TRANSPORTATION  
CUSTOMER: FW WHITCOMB CONSTRUCTION CO.  
DRAWING TITLE: DIAPHRAGMS  
DRAWN BY: YT 06/03/05 JOB  
CHECKED BY: GG 06/06/05 NUMBER: 6005 SHEET NUMBER: 5

EASTERN BRIDGE LLC  
RURAL RTE 2, BOX 302  
CLAREMONT, NH 03743  
603-542-5202