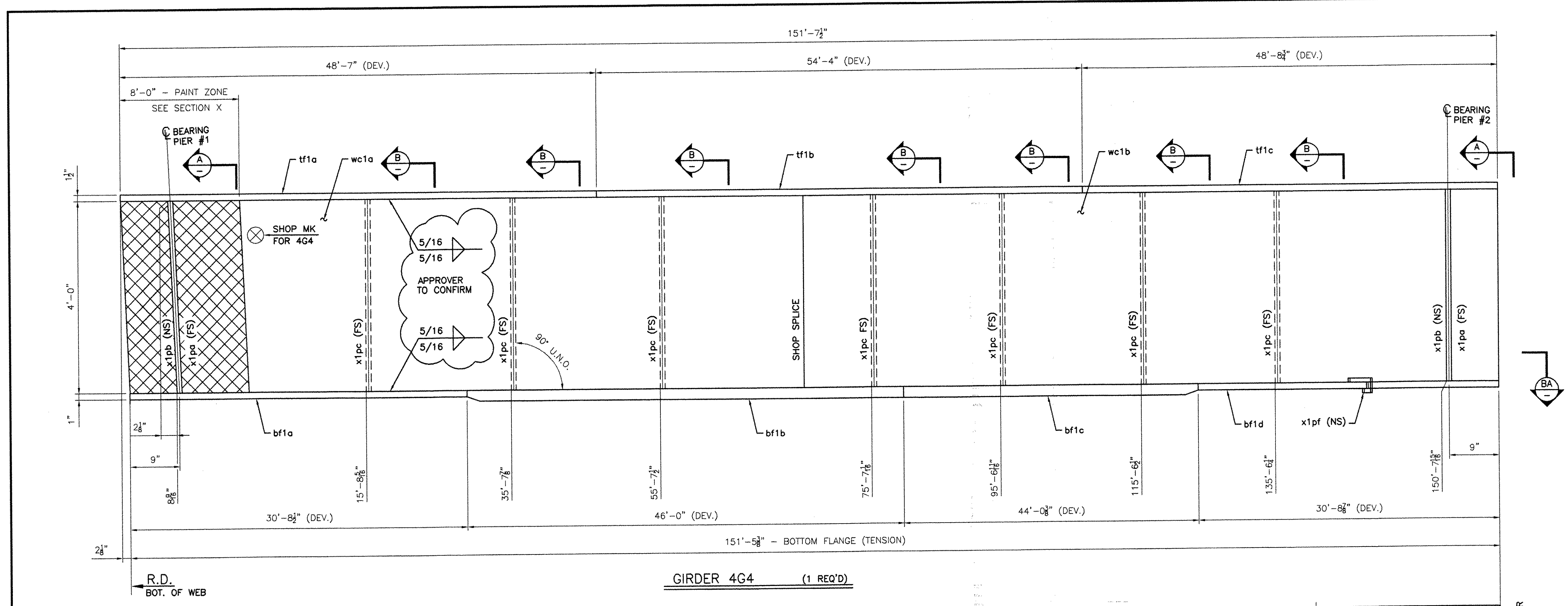


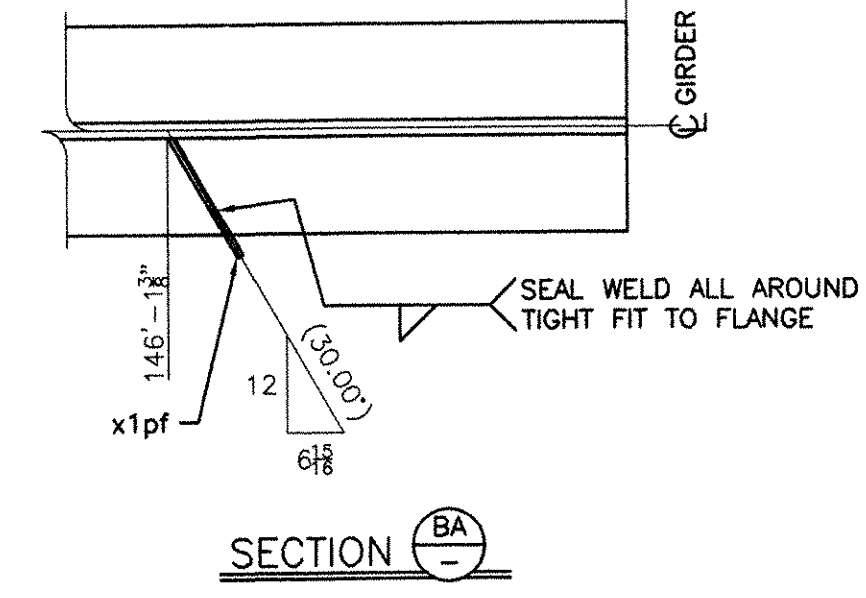
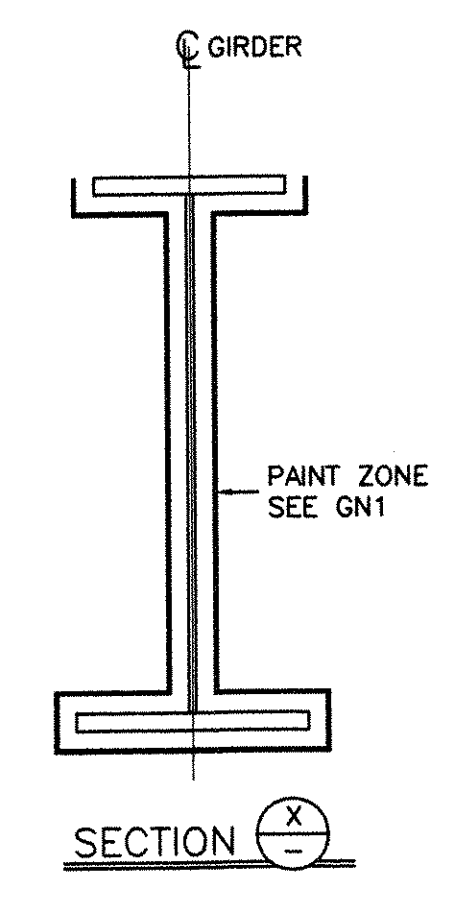
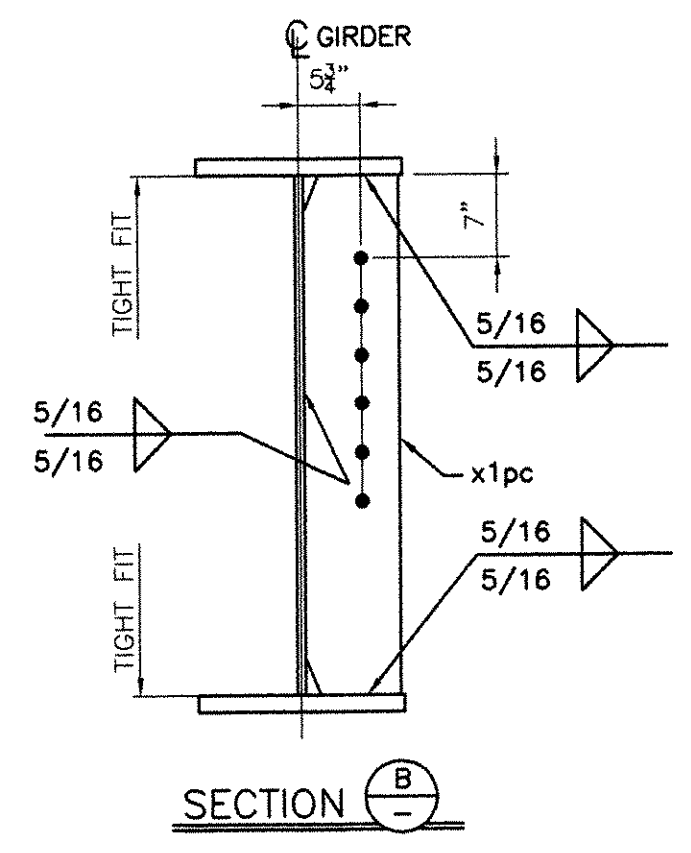
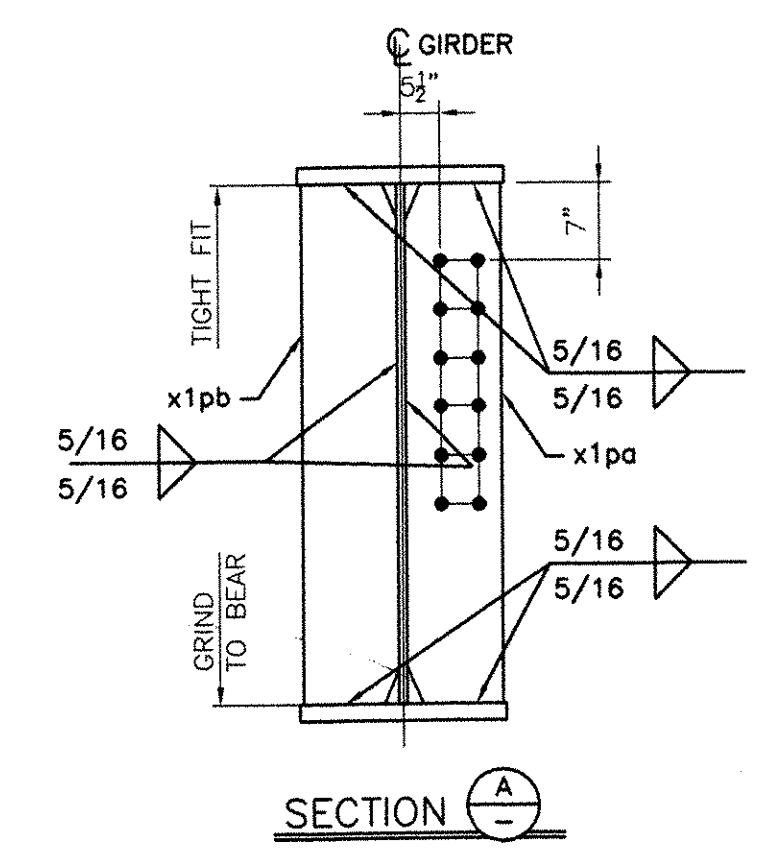
**BILL OF MATERIAL**

Drawing Number	Revision Number	Ship Mark	Piece Mark	Qty	Type of Material	Size of Material	Grade	Length	Finish	Notes
4		4G4		1			Total weight:		53343 lbs	
4		4G4	wc1a	1	PL Plate	9/16x48	A709-GR50W	70'-9 9/16	CVN	3
4		4G4	wc1b	1	PL Plate	9/16x48	A709-GR50W	80'-10 7/8	CVN	4
4		4G4	tf1a	1	PL Plate	1 1/2x24	A709-GR50W	48'-7		1
4		4G4	tf1b	1	PL Plate	1 1/2x24	A709-GR50W	54'-4		2
4		4G4	tf1c	1	PL Plate	1 1/2x24	A709-GR50W	48'-8 3/4		1
4		4G4	bf1a	1	PL Plate	1x24	A709-HPS70W	30'-8 1/2	CVN	7
4		4G4	bf1b	1	PL Plate	2x24	A709-HPS70W	46'-0	CVN	6
4		4G4	bf1c	1	PL Plate	2x24	A709-HPS70W	44'-0 3/8	CVN	5
4		4G4	bf1d	1	PL Plate	1x24	A709-HPS70W	30'-8 7/8	CVN	7
4		4G4	x1pa	2	PL Plate	7/8x11 1/2	A709-GR50W	4'-0		8
4		4G4	x1pb	2	PL Plate	7/8x11 1/2	A709-GR50W	4'-0		8
4		4G4	x1pc	7	PL Plate	1/2x11 1/2	A709-GR50W	4'-0		9
4		4G4	x1pf	1	PL Plate	1/4x3	A709-GR50W	1'-3 11/16		10



R.D.  
BOT. OF WEB

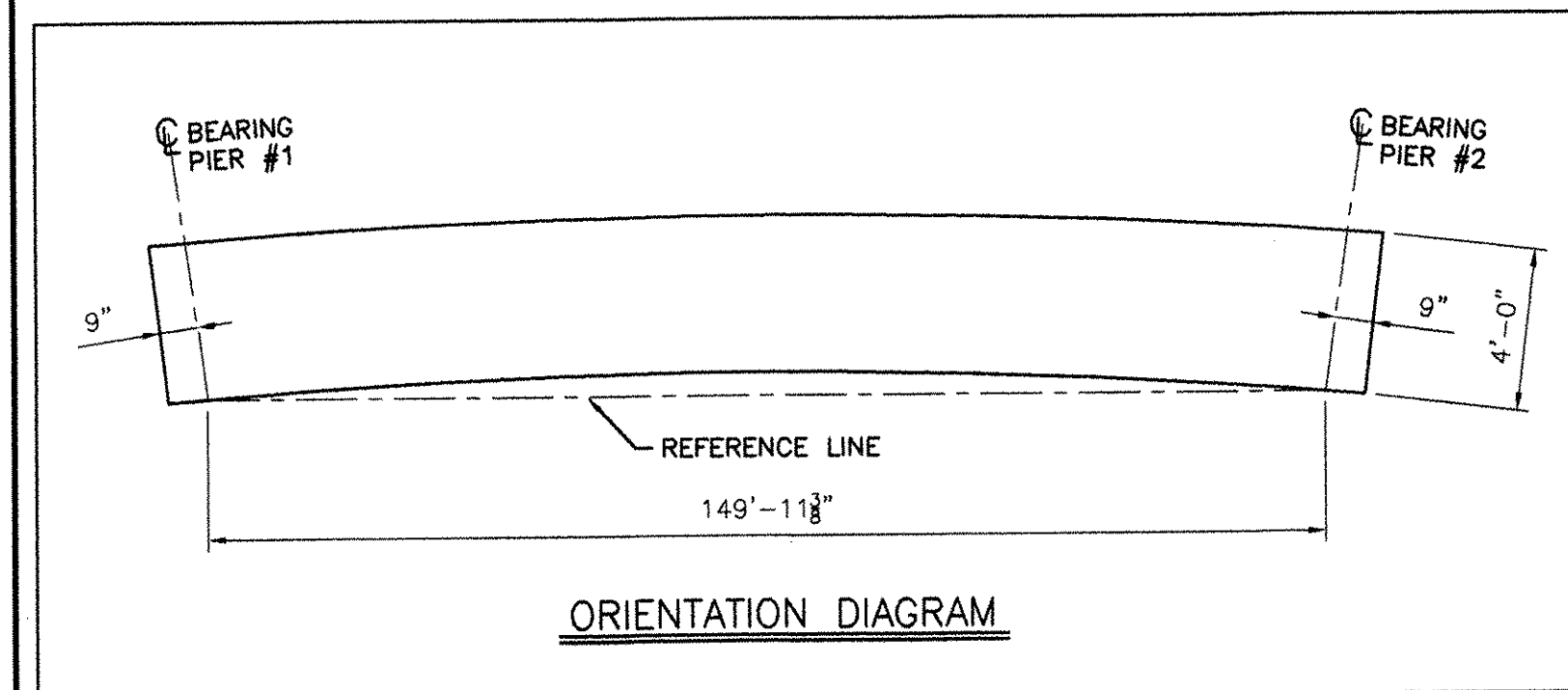
**GIRDER 4G4 (1 REQ'D)**



- NOTES:
- 1- GENERAL NOTES: SEE GN1
  - 2- PAINT: SEE GN1
  - 3- HOLES: 1/8"
  - 4- FOR WEB & FLANGE DETAILS, SEE WC1

RECEIVED  
 OK'D BY AKW OK'D BY \_\_\_\_\_  
 SEP 20 2005  
 RESUBMIT \_\_\_\_\_ APPROVED \_\_\_\_\_  
 BY CPW DATE 10/31/05

RESERVED FOR STAMPS



NOTICE  
 This drawing shall not be used or reproduced in any manner, nor shall any similar drawings or structures be made therefrom, nor shall the information thereon be used for any purpose other than that for which it is released without the written consent of an officer of EASTERN BRIDGE LLC.

**tenco**  
 1028  
**EASTERN BRIDGE LLC**  
 RURAL RTE 2, BOX 302  
 CLAREMONT, NH 03743  
 603-542-5202

PROJECT: BRIDGE 8 OVER THE WHITE RIVER, PROJECT NO BRO-BTN 2004(1)  
 LOCATION: TOWN OF HARTFORD, COUNTY OF WINDSOR, VERMONT  
 ENGINEER: STATE OF VERMONT, AGENCY OF TRANSPORTATION  
 CUSTOMER: FW WHITCOMB CONSTRUCTION CO.  
 DRAWING TITLE: GIRDER 4G4  
 DRAWN BY: YJ 06/06/05 JOB  
 CHECKED BY: GG 06/06/05 NUMBER: 6005 SHEET NUMBER: 4