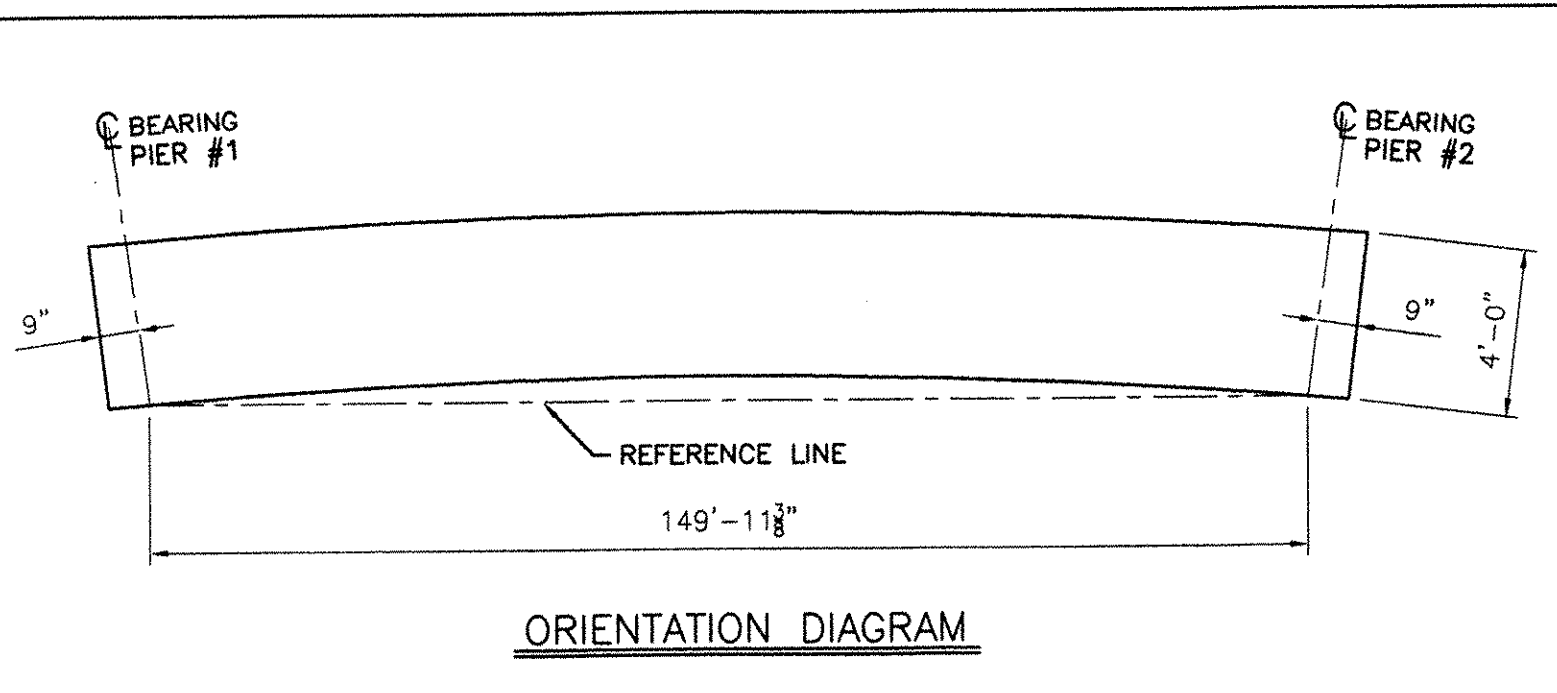
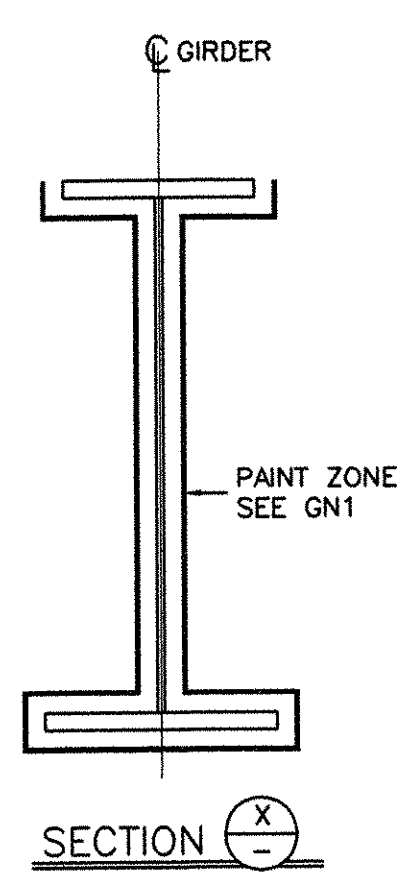
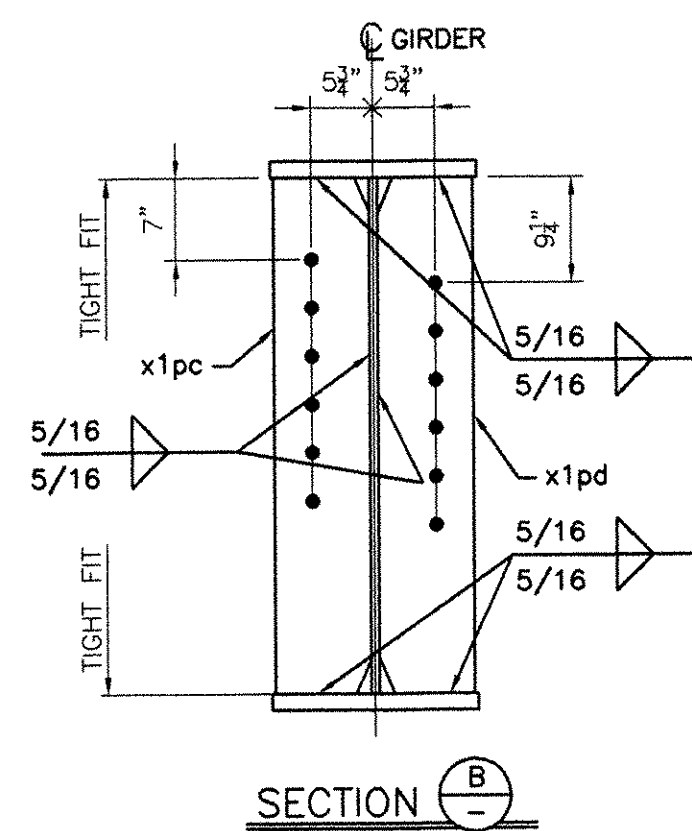
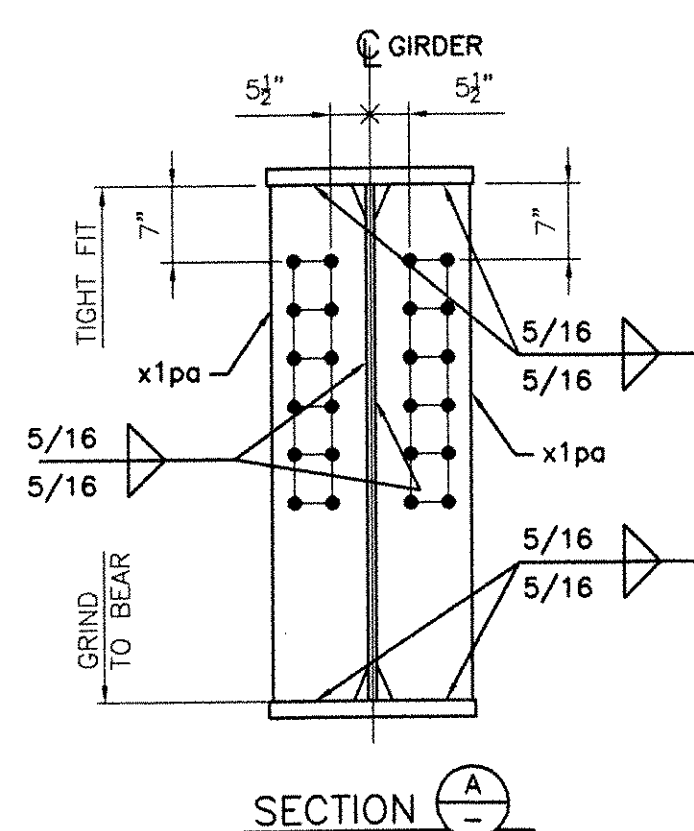


BILL OF MATERIAL										
Drawing Number	Revision Number	Ship Mark	Piece Mark	Qty	Type of Material	Size of Material	Grade	Length	Finish	Notes
2		2G2		1			Total weight:		5388 lbs	
2		2G2	wc1a	1	PL Plate	9/16x48	A709-GR50W	70'-9 9/16	CVN	3
2		2G2	wc1b	1	PL Plate	9/16x48	A709-GR50W	80'-10 7/8	CVN	4
2		2G2	tf1a	1	PL Plate	1 1/2x24	A709-GR50W	48'-7		1
2		2G2	tf1b	1	PL Plate	1 1/2x24	A709-GR50W	54'-4		2
2		2G2	tf1c	1	PL Plate	1 1/2x24	A709-GR50W	48'-8 3/4		1
2		2G2	bf1a	1	PL Plate	1x24	A709-HPS70W	30'-8 1/2	CVN	7
2		2G2	bf1b	1	PL Plate	2x24	A709-HPS70W	46'-0	CVN	6
2		2G2	bf1c	1	PL Plate	2x24	A709-HPS70W	44'-0 3/8	CVN	5
2		2G2	bf1d	1	PL Plate	1x24	A709-HPS70W	30'-8 7/8	CVN	7
2		2G2	x1pa	4	PL Plate	7/8x11 1/2	A709-GR50W	4'-0		8
2		2G2	x1pc	7	PL Plate	1/2x11 1/2	A709-GR50W	4'-0		9
2		2G2	x1pd	7	PL Plate	1/2x11 1/2	A709-GR50W	4'-0		9



- NOTES:
- 1- GENERAL NOTES: SEE GN1
  - 2- PAINT: SEE GN1
  - 3- HOLES: 1"ø
  - 4- FOR WEB & FLANGE DETAILS, SEE WC1

RECEIVED  
 OK'D BY: CPW OK'D BY: \_\_\_\_\_  
 SEP 20 2005  
 RESUBMIT: \_\_\_\_\_ APPROVED: \_\_\_\_\_  
 BY: CPW DATE: 10/31/05

RESERVED FOR STAMPS

REV	DATE	DESCRIPTION	QTY	DATE	ISSUED TO	FOR
			8	9/16/05	F W Whitcomb	Approval

NOTICE  
 This drawing shall not be used or reproduced in any manner, nor shall any similar drawings or structures be made therefrom, nor shall the information thereon be used for any purpose other than that for which it is released without the written consent of an officer of EASTERN BRIDGE LLC.

tenco 1028

EASTERN BRIDGE LLC  
 RURAL RTE 2, BOX 302  
 CLAREMONT, NH 03743  
 603-542-5202

PROJECT: BRIDGE 8 OVER THE WHITE RIVER, PROJECT NO BRO-BTN 2004(1)		
LOCATION: TOWN OF HARTFORD, COUNTY OF WINDSOR, VERMONT		
ENGINEER: STATE OF VERMONT, AGENCY OF TRANSPORTATION		
CUSTOMER: FW WHITCOMB CONSTRUCTION CO.		
DRAWING TITLE: GIRDER 2G2		
DRAWN BY: YT 06/06/05	JOB NUMBER: 6005	SHEET NUMBER: 2
CHECKED BY: GG 06/06/05		