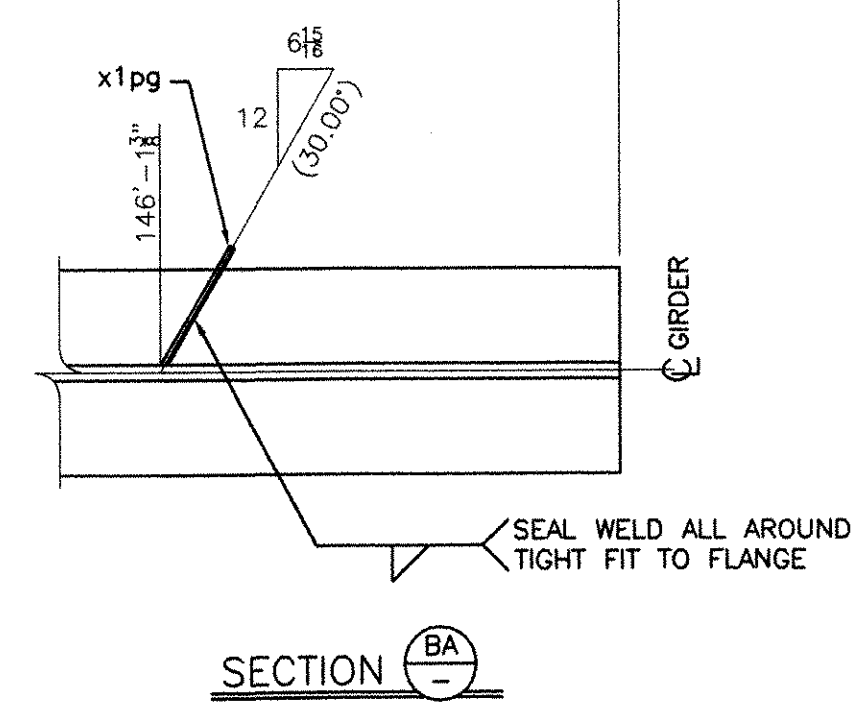
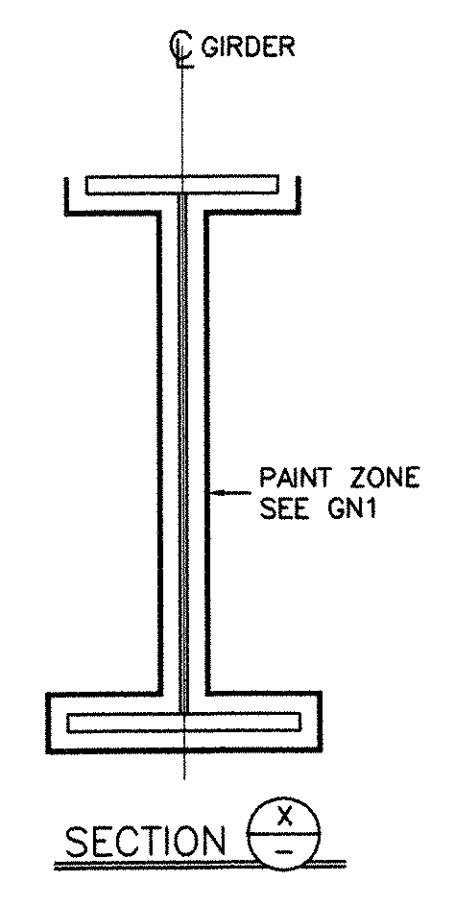
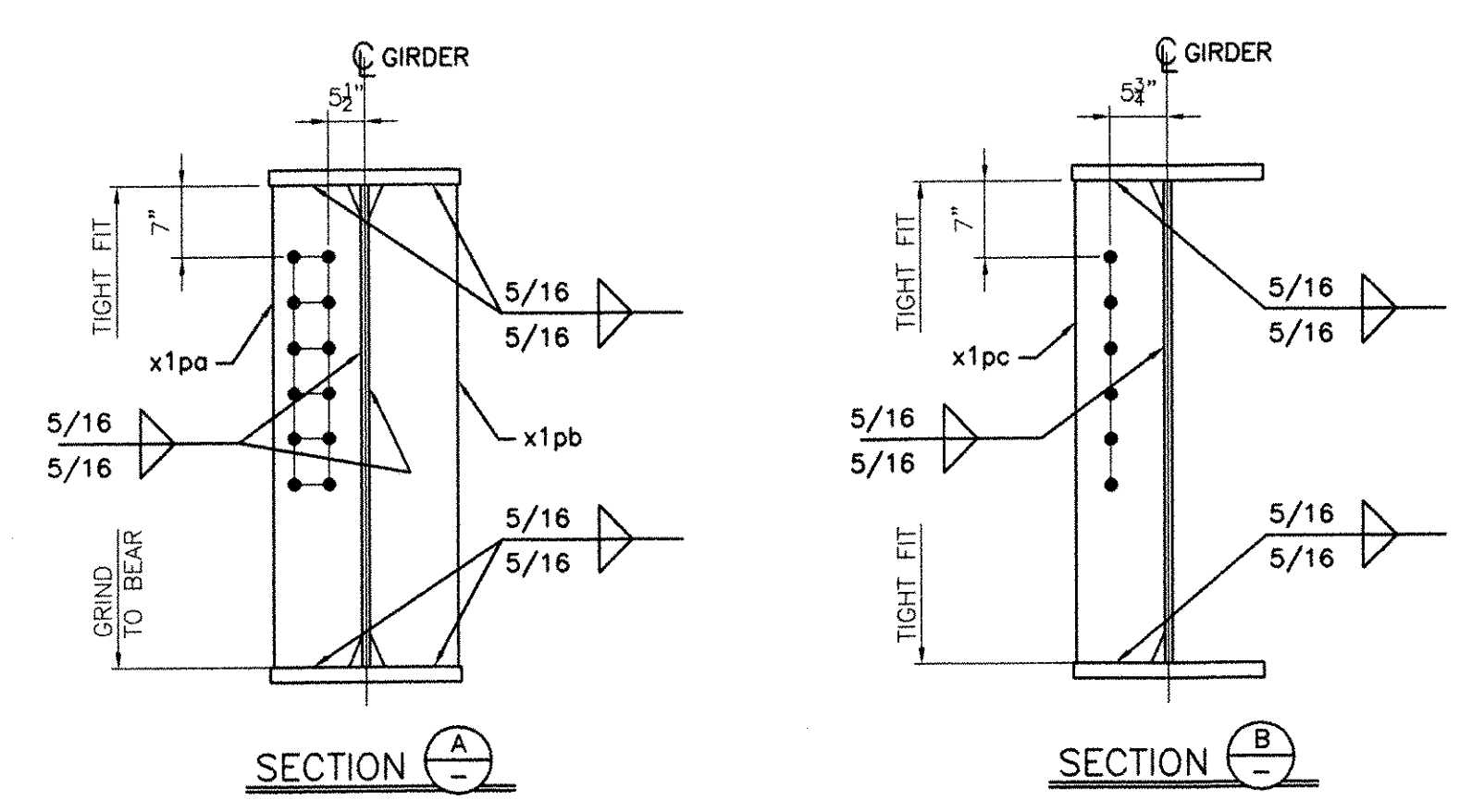


BILL OF MATERIAL										
Drawing Number	Revision Number	Ship Mark	Piece Mark	Qty	Type of Material	Size of Material	Grade	Length	Finish	Notes
1		1G1		1			Total weight:		53343 lbs	
1		1G1	wc1a	1	PL Plate	9/16x48	A709-GR50W	70'-9 9/16	CVN	3
1		1G1	wc1b	1	PL Plate	9/16x48	A709-GR50W	80'-10 7/8	CVN	4
1		1G1	tf1a	1	PL Plate	1 1/2x24	A709-GR50W	48'-7		1
1		1G1	tf1b	1	PL Plate	1 1/2x24	A709-GR50W	54'-4		2
1		1G1	tf1c	1	PL Plate	1 1/2x24	A709-GR50W	48'-8 3/4		1
1		1G1	bf1a	1	PL Plate	1x24	A709-HPS70W	30'-8 1/2	CVN	7
1		1G1	bf1b	1	PL Plate	2x24	A709-HPS70W	46'-0	CVN	6
1		1G1	bf1c	1	PL Plate	2x24	A709-HPS70W	44'-0 3/8	CVN	5
1		1G1	bf1d	1	PL Plate	1x24	A709-HPS70W	30'-8 7/8	CVN	7
1		1G1	x1pa	2	PL Plate	7/8x11 1/2	A709-GR50W	4'-0		8
1		1G1	x1pb	2	PL Plate	7/8x11 1/2	A709-GR50W	4'-0		8
1		1G1	x1pc	7	PL Plate	1/2x11 1/2	A709-GR50W	4'-0		9
1		1G1	x1pg	1	PL Plate	1/4x3	A709-GR50W	1'-3 11/16		10



- NOTES:
- 1- GENERAL NOTES: SEE GN1
 - 2- PAINT: SEE GN1
 - 3- HOLES: 1"Ø
 - 4- FOR WEB & FLANGE DETAILS, SEE WC1

RECEIVED

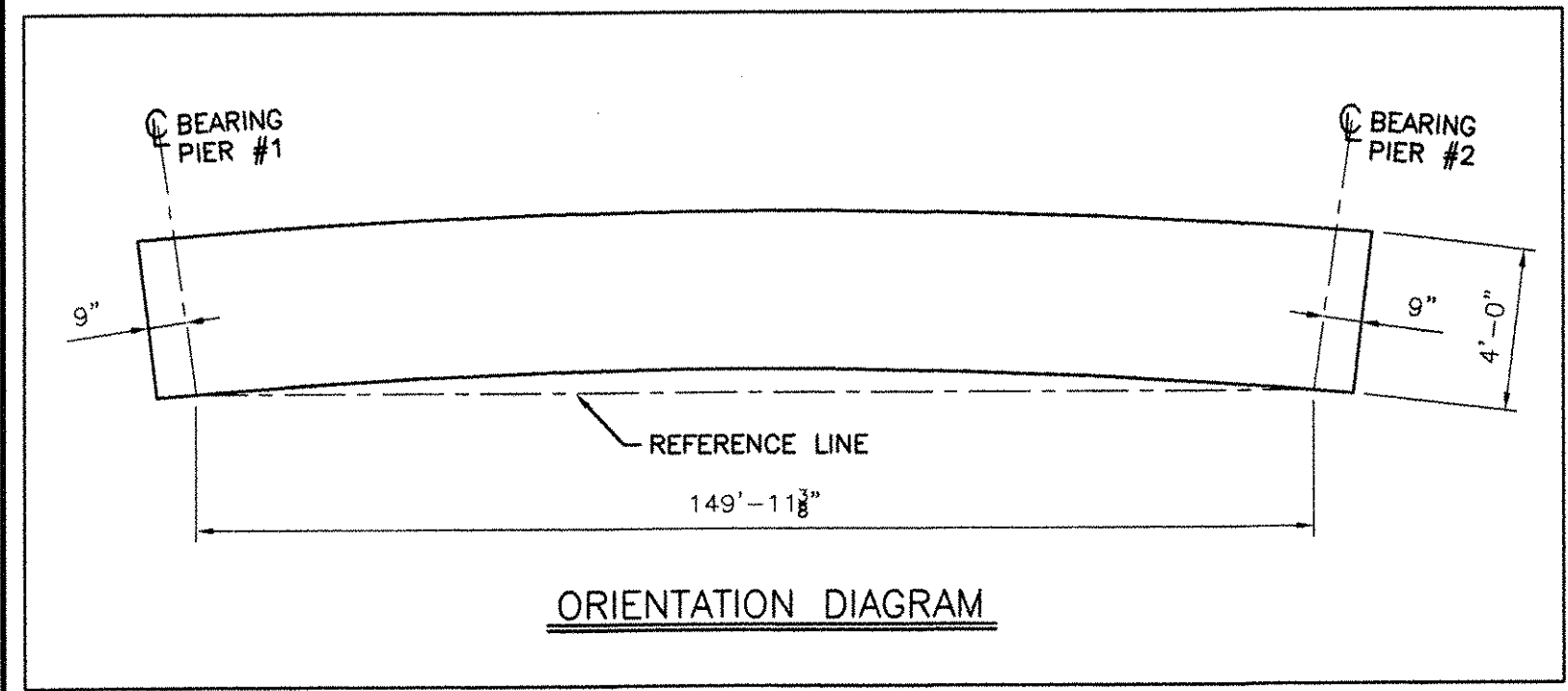
CK'D BY: KWJ CK'D BY: _____

SEP 20 2005

RESUBMIT _____ APPROVED: _____

BY CPW DATE 10/31/05

RESERVED FOR STAMPS



NOTICE

This drawing shall not be used or reproduced in any manner, nor shall any similar drawings or structures be made therefrom, nor shall the information thereon be used for any purpose other than that for which it is released without the written consent of an officer of EASTERN BRIDGE LLC.

		EASTERN BRIDGE LLC RURAL RTE 2, BOX 302 CLAREMONT, NH 03743 603-542-5202	
PROJECT: BRIDGE 8 OVER THE WHITE RIVER, PROJECT NO BRO-BTN 2004(1) LOCATION: TOWN OF HARTFORD, COUNTY OF WINDSOR, VERMONT ENGINEER: STATE OF VERMONT, AGENCY OF TRANSPORTATION CUSTOMER: FW WHITCOMB CONSTRUCTION CO.	DRAWING TITLE: GIRDER 1G1 DRAWN BY: YJ 06/03/05 JOB CHECKED BY: GG 06/06/05 NUMBER: 6005	SHEET NUMBER: 1	REV DATE DESCRIPTION 8 - 9/16/05 FW Whitcomb Approval FOR