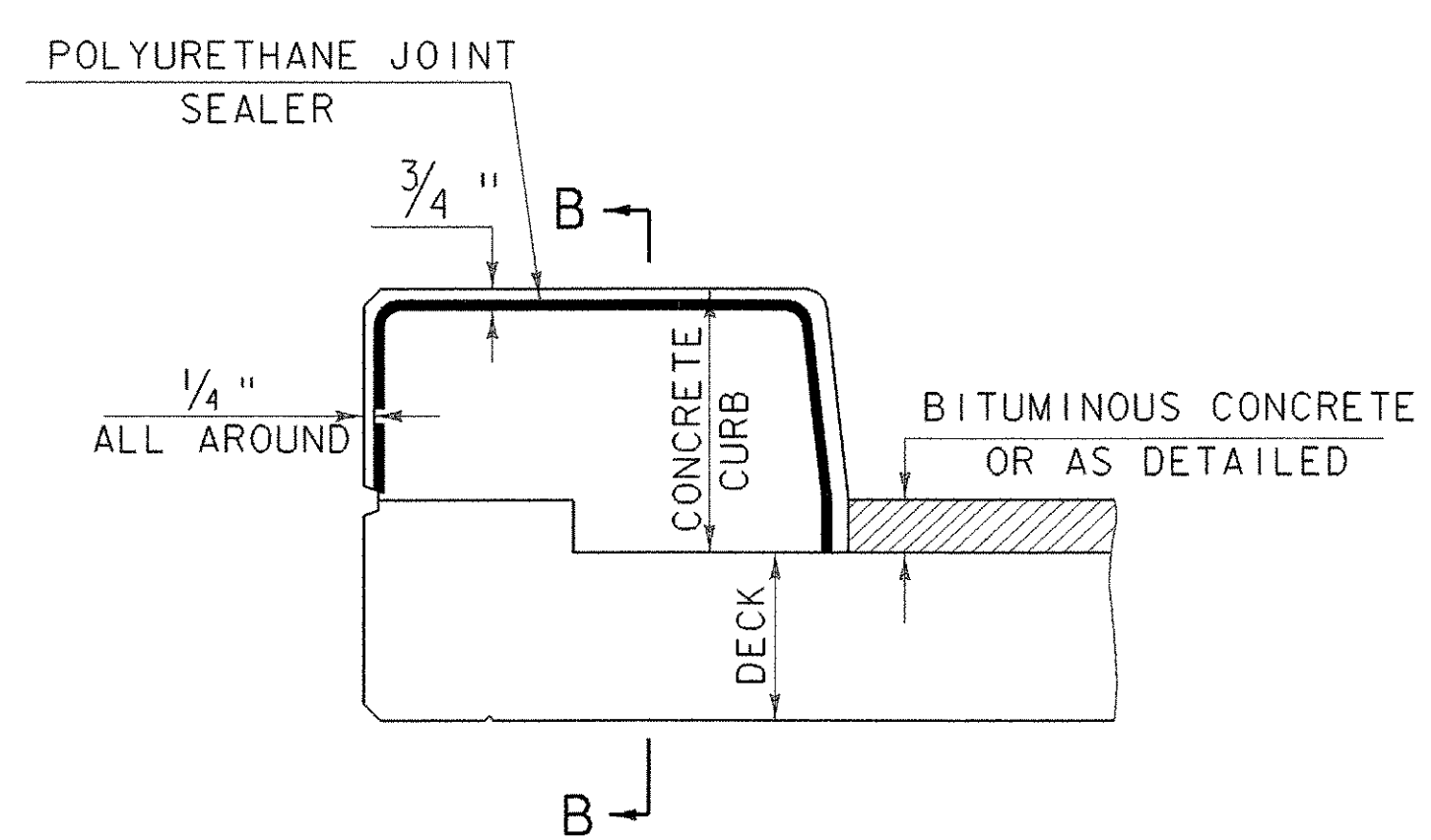
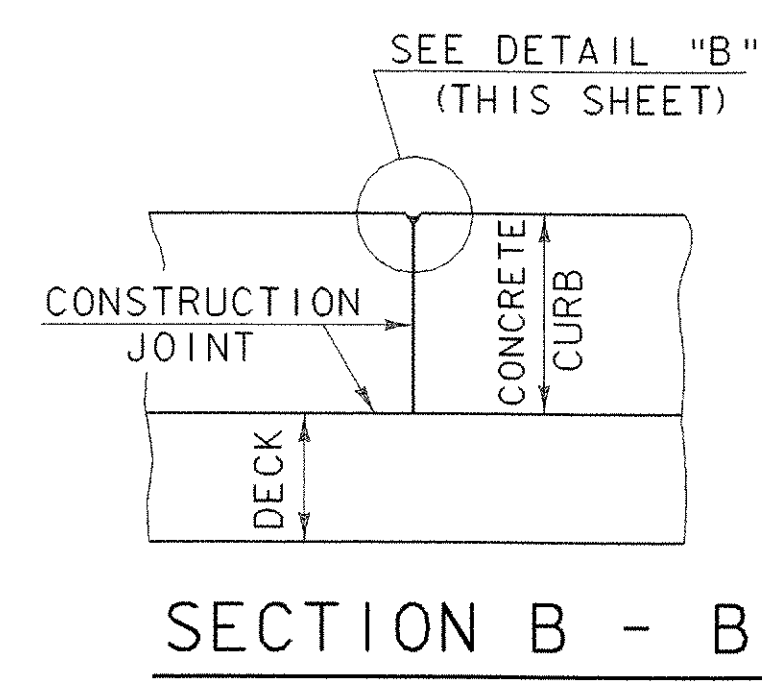


CURB REINFORCING PLAN

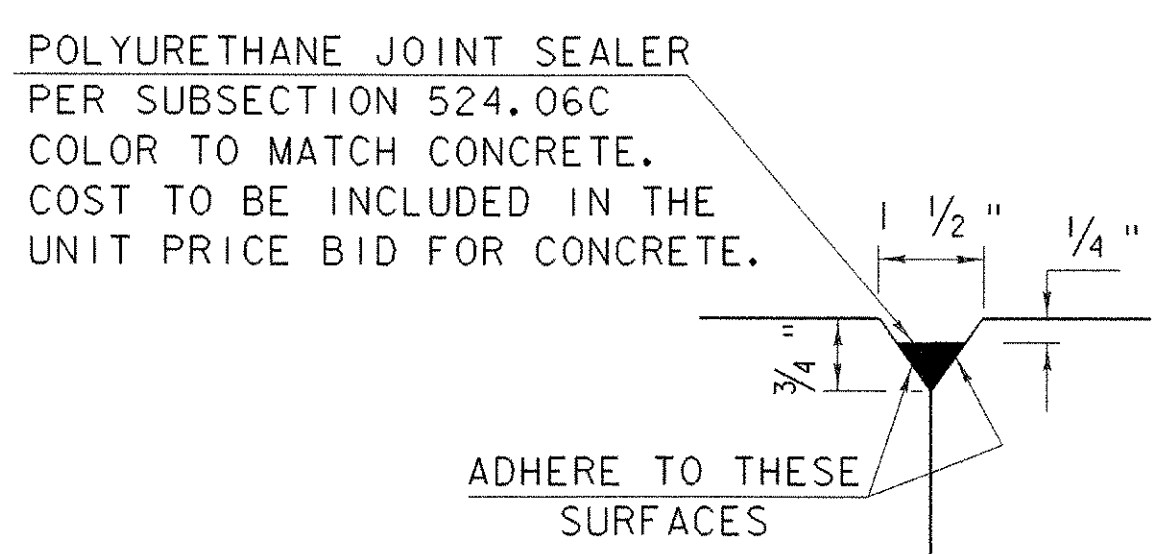
SCALE 3/16" = 1'-0"



TYPICAL SECTION THROUGH CONCRETE CURB CONSTRUCTION JOINT
 NTS

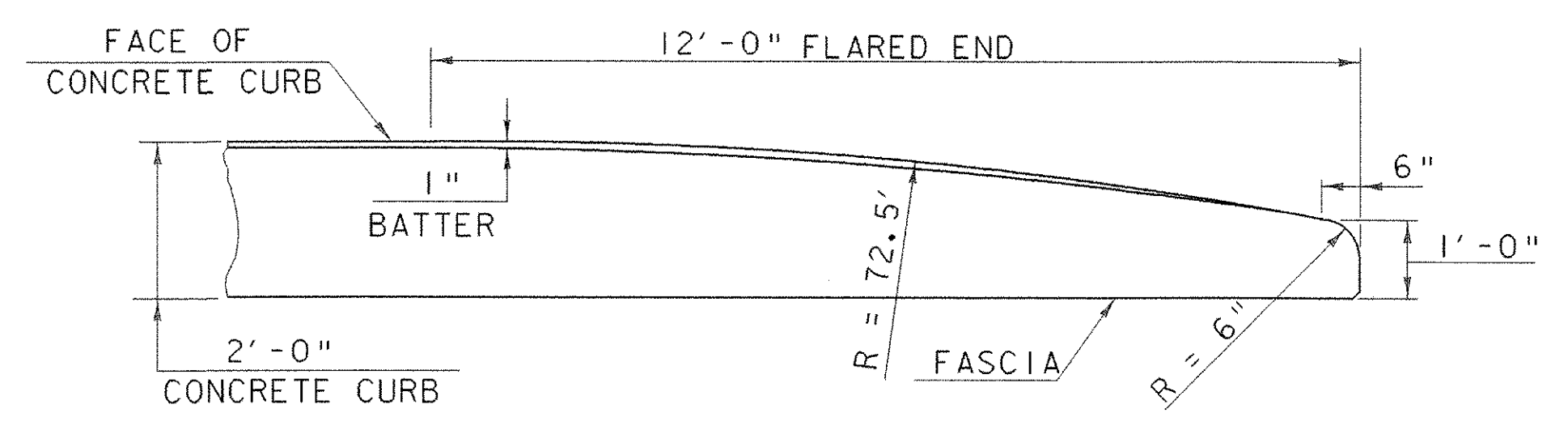


SECTION B - B



DETAIL "B"

- NOTES:
1. CONSTRUCTION JOINTS THROUGH CONCRETE CURBS SHALL BE SPACED MAXIMUM 15'-0" CENTER TO CENTER AND SHALL BE 1'-6" MINIMUM FROM THE CENTER OF THE NEAREST BRIDGE RAIL POST. CONCRETE SHALL BE PLACED IN ALTERNATING SECTIONS WITH A MINIMUM OF 48 HOURS DELAY BETWEEN ADJACENT POURS.
 2. LONGITUDINAL REINFORCING SHALL PASS THROUGH CONCRETE CURB CONSTRUCTION JOINTS.
 3. CONSTRUCTION JOINTS THROUGH SIDEWALKS SHALL BE SIMILAR TO CONCRETE CURB CONSTRUCTION JOINTS.



FLARED END DETAIL FOR 2'-0" CURB

NTS

PROJECT: HARTFORD	PROJECT NO.: BRO-BTN 2004 (1)
DESIGN FILE NAME: 89j045/structures/sj045asup.dgn	PLOT DATE: 11-FEB-2005
IPARM FILE NAME: sj045curb.i	DRAWN BY: K. M. HIGGINS
DESIGNED BY: K. M. HIGGINS	CHECKED BY: M. LONSTREET
SQUAD LEADER: C. P. WILLIAMS	SHEET: 55 OF 97
CURB DETAILS	