

WINGWALL #2 ELEVATION

SCALE 1/4" = 1'-0"  
 0 2 4 6

WINGWALL #1 ELEVATION

SCALE 1/4" = 1'-0"  
 0 2 4 6

NOTE:

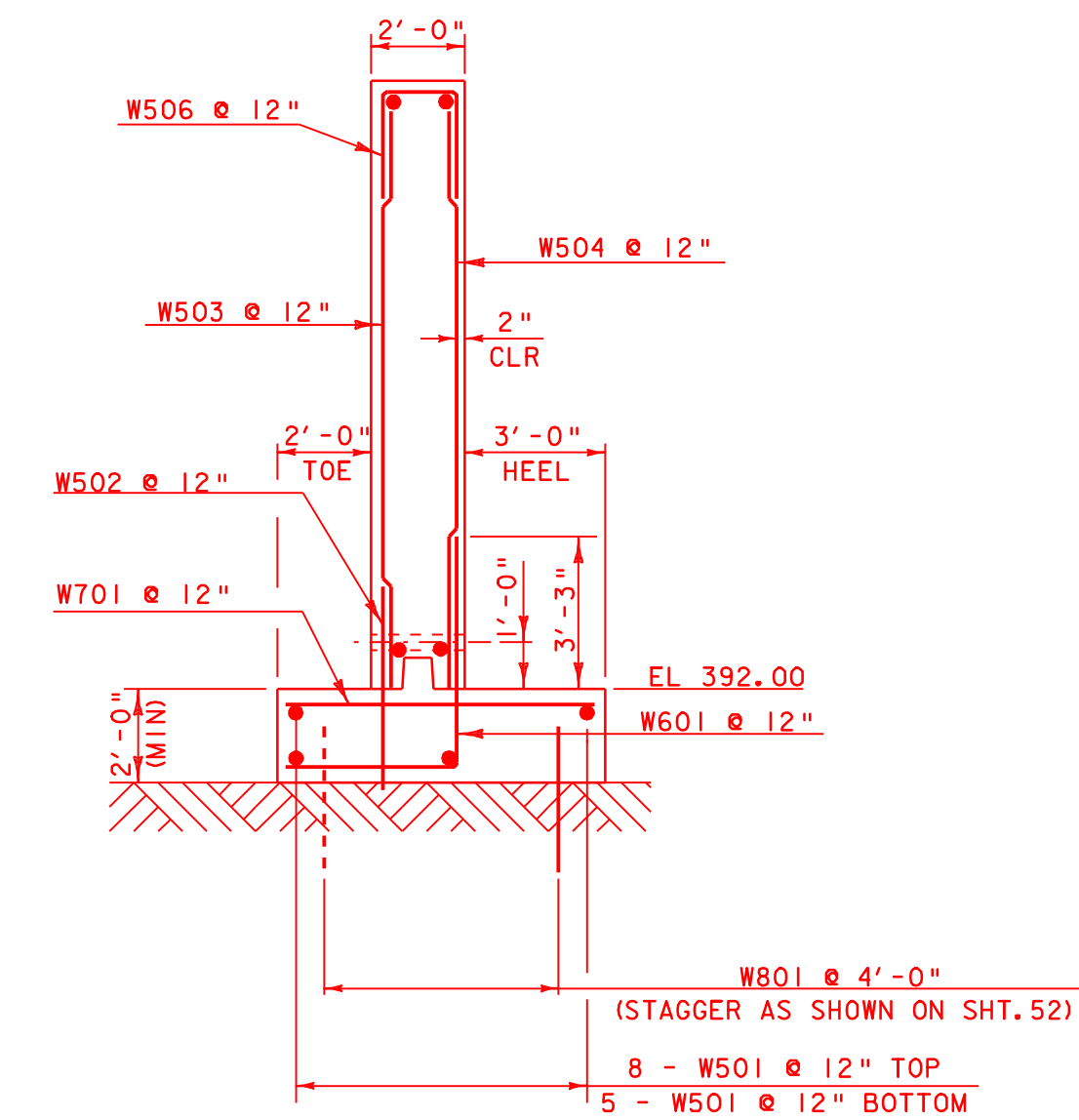
THE TOP OF THE FOOTING ELEVATION FOR ABUTMENT #1 WAS SET BASED ON THE LEDGE ELEVATION DETERMINED FROM B-04. ADJUSTMENTS IN FOOTING ELEVATION AND GEOMETRY ARE EXPECTED AS ACTUAL LEDGE ELEVATION AND CONDITION IS DETERMINED THROUGH EXCAVATION. THE ELEVATION AND GEOMETRY SHOWN REPRESENT THE LOWEST LEDGE ELEVATION EXPECTED.

NOTES:

NF = NEAR FACE  
 FF = FAR FACE  
 EF = EACH FACE  
 ▲ = CUT TO FIT IN FIELD

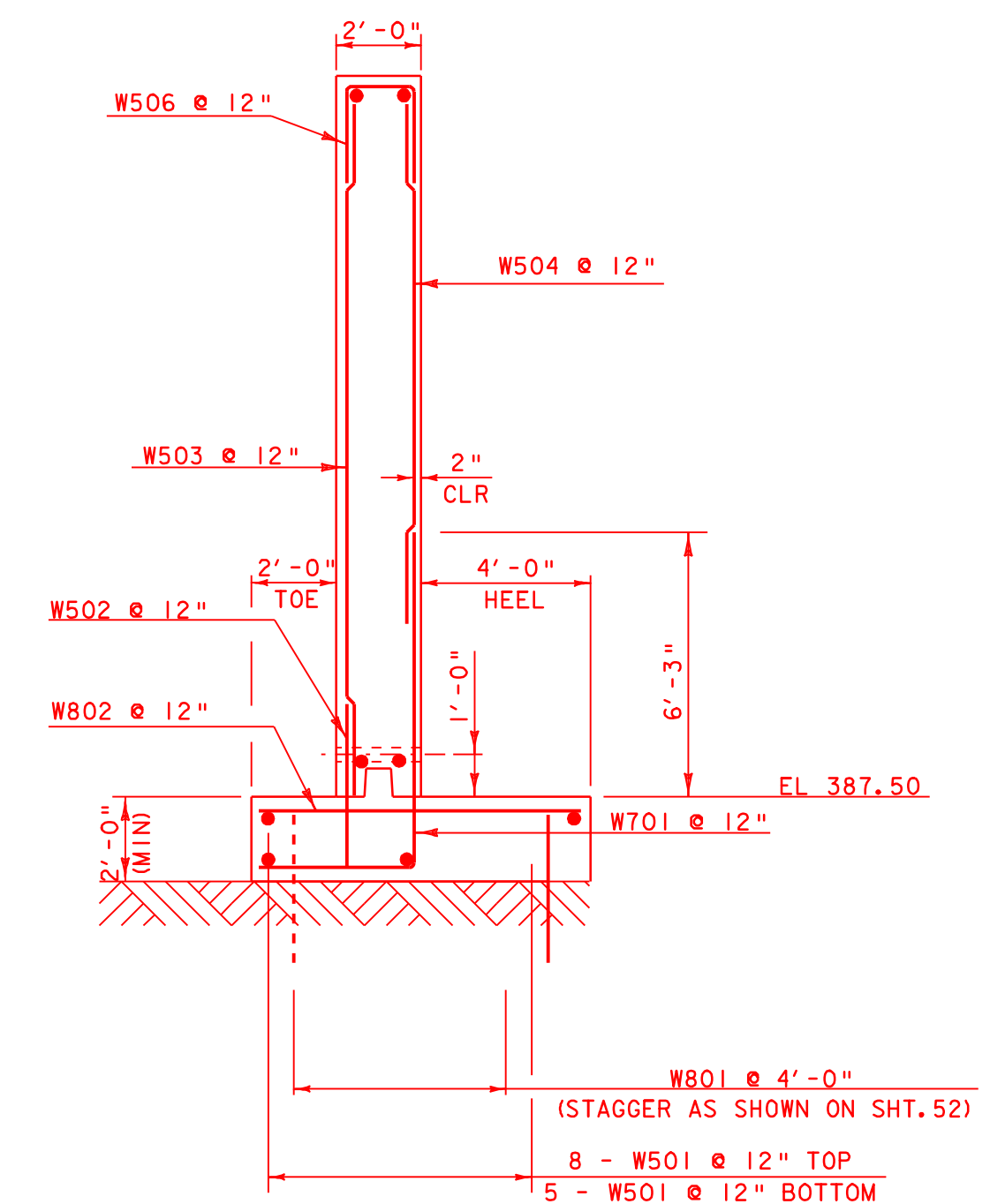
3" CLEAR UNLESS OTHERWISE SPECIFIED ON PLANS

ALL LAPS ARE 2'-2" UNLESS OTHERWISE SPECIFIED ON PLANS



WINGWALL #1 TYPICAL SECTION

WITH NEW STEEL



WINGWALL #2 TYPICAL SECTION

WITH NEW STEEL

PROJECT: HARTFORD	PROJECT NO.: BRO-BTN 2004 (1)
DESIGN FILE NAME: 89j045/structures/sj045sub.dgn	PLOT DATE: 09-MAY-2007 13:08
IPARM FILE NAME: sj045ww1x2.i	DRAWN BY: M LONGSTREET
DESIGNED BY: K. M. HIGGINS	CHECKED BY: K. M. HIGGINS
SQUAD LEADER: C. P. WILLIAMS	SHEET: 50A OF 97
WINGWALL 1 & 2 DETAILS	