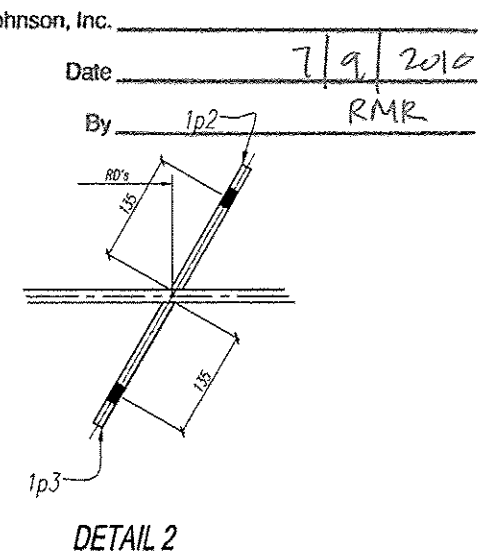
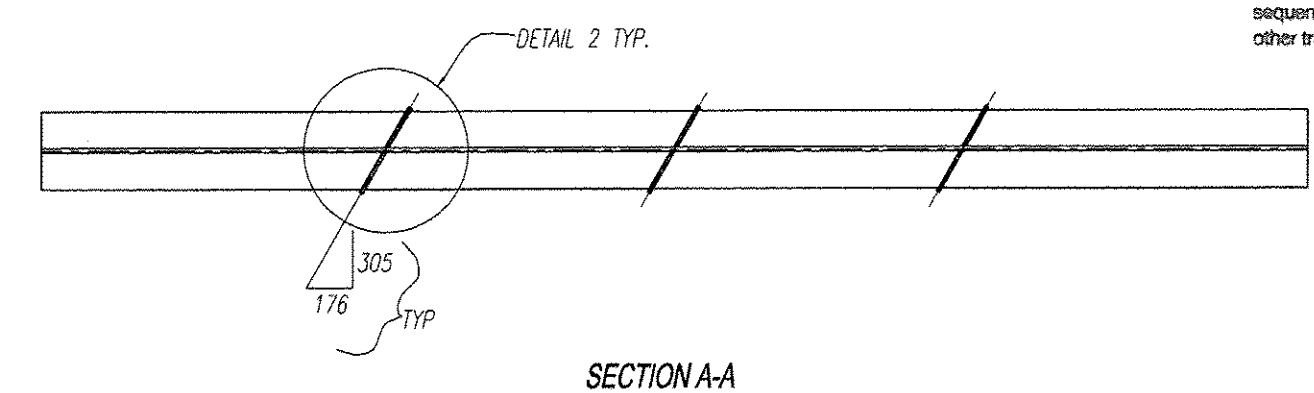


Reviewed
 Rejected

This review is only for general conformance with the design concept and the information given in the Construction Documents. Conditions or comments made on the shop drawings during this review do not relieve the contractor from compliance with the requirements of the plans and specifications. Review of a specific item shall not include review of an assembly of which the item is a component. The Contractor is responsible for dimensions to be confirmed and corrected as the job site, information that pertains solely to the fabrication process or to the means, methods, techniques, sequences and procedures of construction, coordination of the Work with that of all other trades and performing all Work in a safe and satisfactory manner.

Furnish as Collected
 Revise and Resubmit
 Submit Specified Item

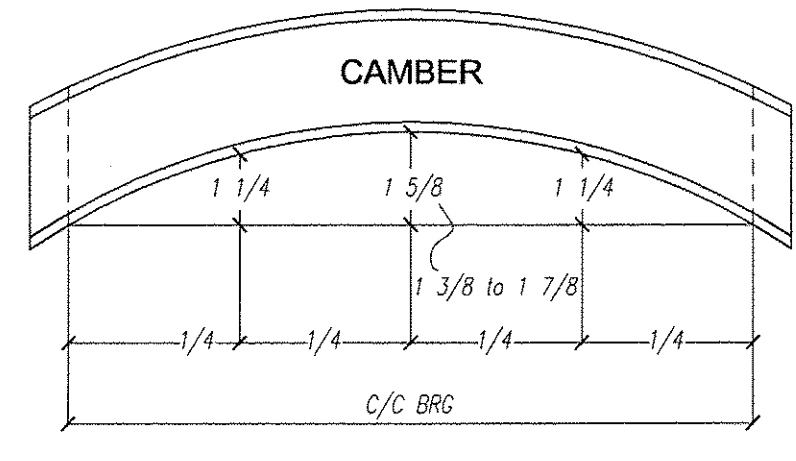
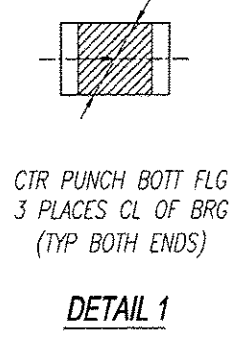
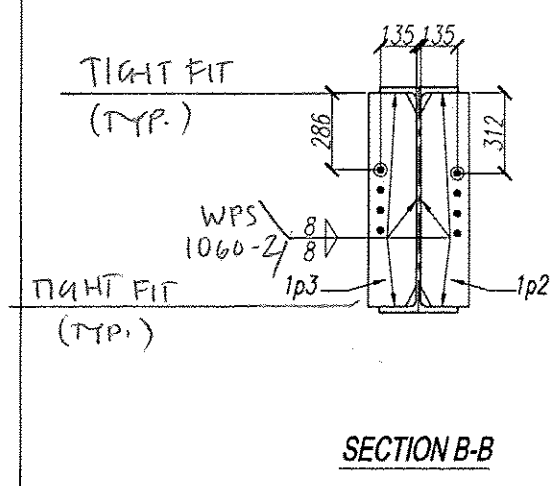
FRAME S1
 SEC E1 FOR LOCATION



McFarland-Johnson, Inc.
 Date 7/9/2016
 By RMR

WORK THIS DWG WITH DWG S1A

- NOTES:
 1. FOR GENERAL NOTES SEE DWG 011
 2. ALL DIMENSIONS (RD'S) ARE ALONG BOTT FLG. PRIOR TO CAMBER
 3. CLEAN PER 011 PRIOR TO FRAME ASSEMBLY
 4. LOCATE ON DWG E1



NO.	REV.	BY	DATE
STS STEEL, INC. ENGINEERS • FABRICATORS • Erectors PM: (813) 370-3463 FAX: (813) 370-3566			
DRAWING TITLE GREEN S1B			
PROJECT: VERMONT MOUNTAIN RECREATION CENTER			
OWNER: THE FORT MILLER CO., INC.			
PROJECT: 8774 W. 100-100 S. W. 8th ST. SUITE 1000 WOODBRIDGE FL 32190			
ISSUED	DATE	BY	DATE
REV.	DATE	BY	DATE
REV.	DATE	BY	DATE