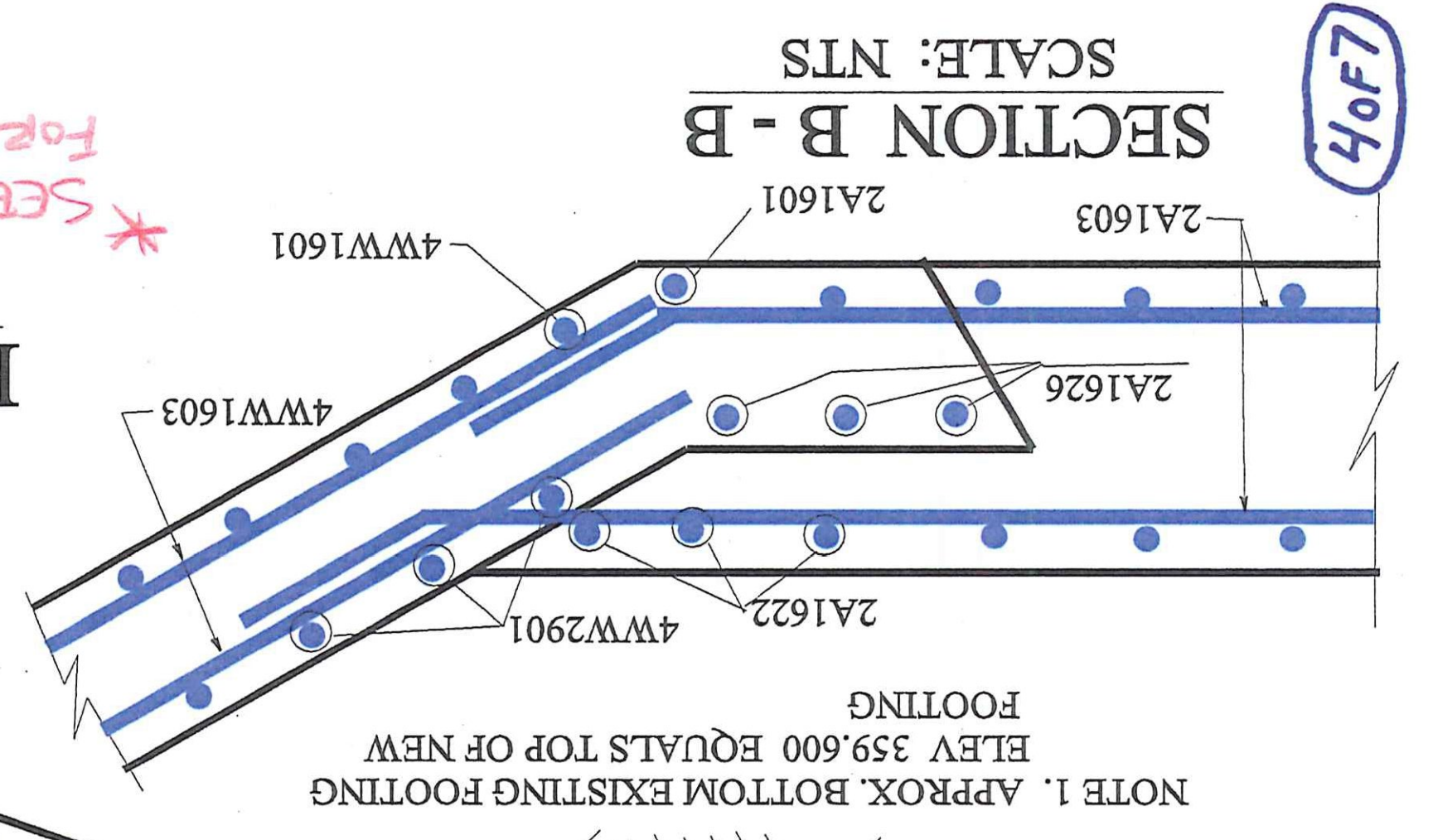
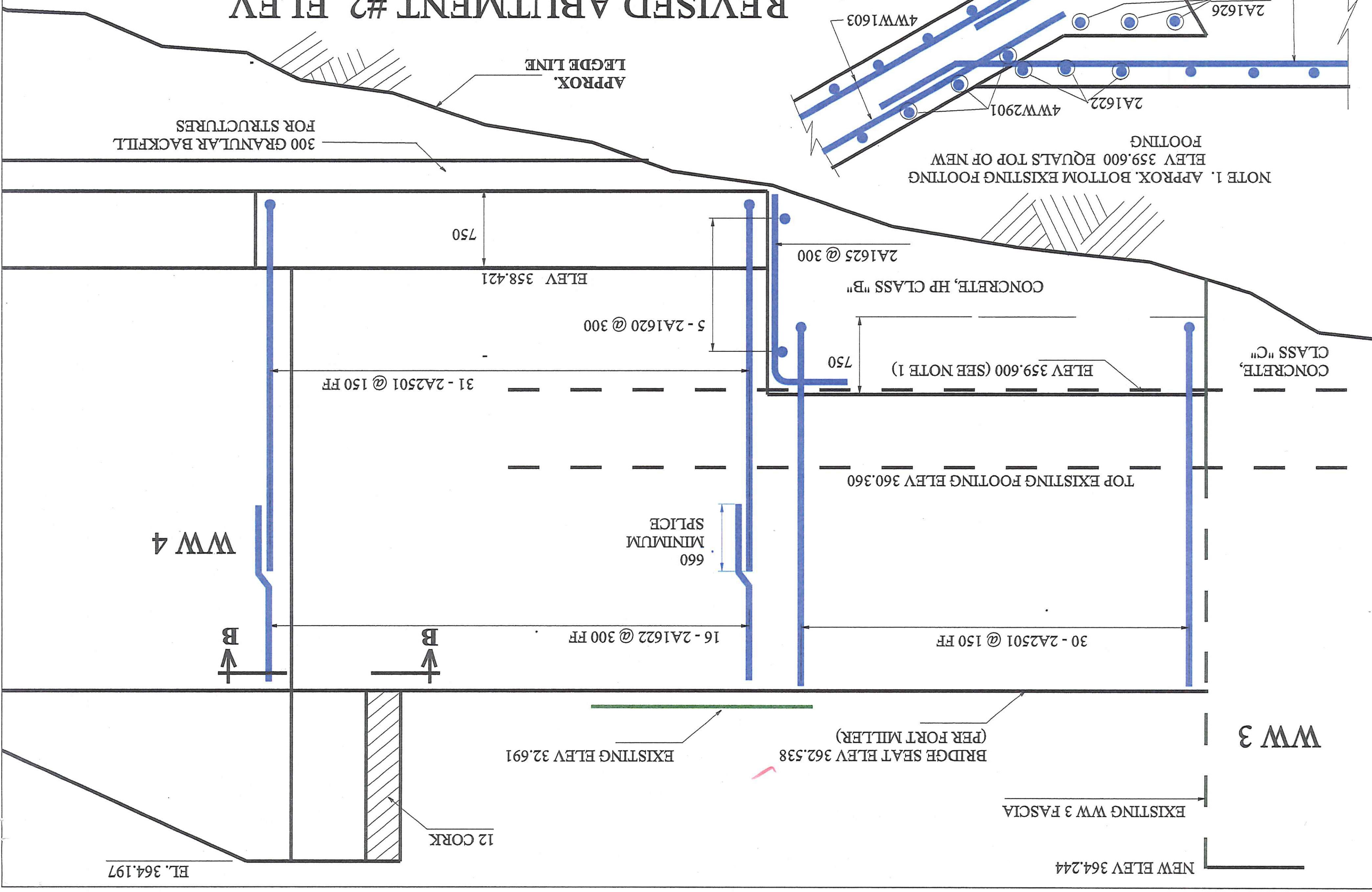


BY S. FARNSWORTH
 VTRANS - SEPT. 9, 2010
 RIPTON FH 010-1(42)

REVISIED ABUTMENT #2 ELEV.

SCALE: 1:50

* SEE ATTACHED LEDGE PROFILE FOR STEP CONSTRUCTED



H07

NEW ELEV 364.244

EXISTING WW 3 FASCIA

BRIDGE SEAT ELEV 362.538
 (PER FORT MILLER)

EXISTING ELEV 32.691

12 CORK

EL. 364.197

WW 3

WW 4

CONCRETE, CLASS "C"

ELEV 359.600 (SEE NOTE 1)

CONCRETE, HP CLASS "B"

ELEV 358.421

NOTE 1. APPROX. BOTTOM EXISTING FOOTING ELEV 359.600 EQUALS TOP OF NEW FOOTING

SECTION B - B

SCALE: NTS