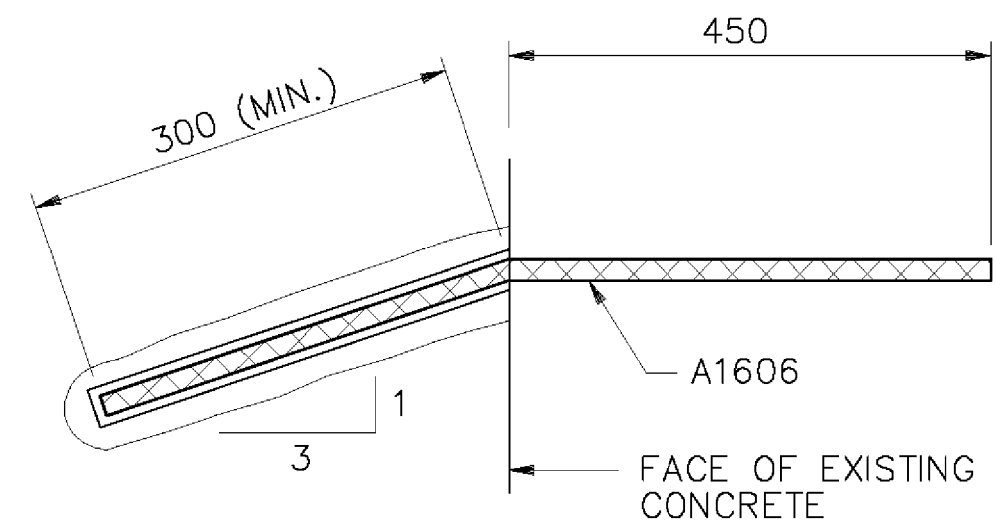
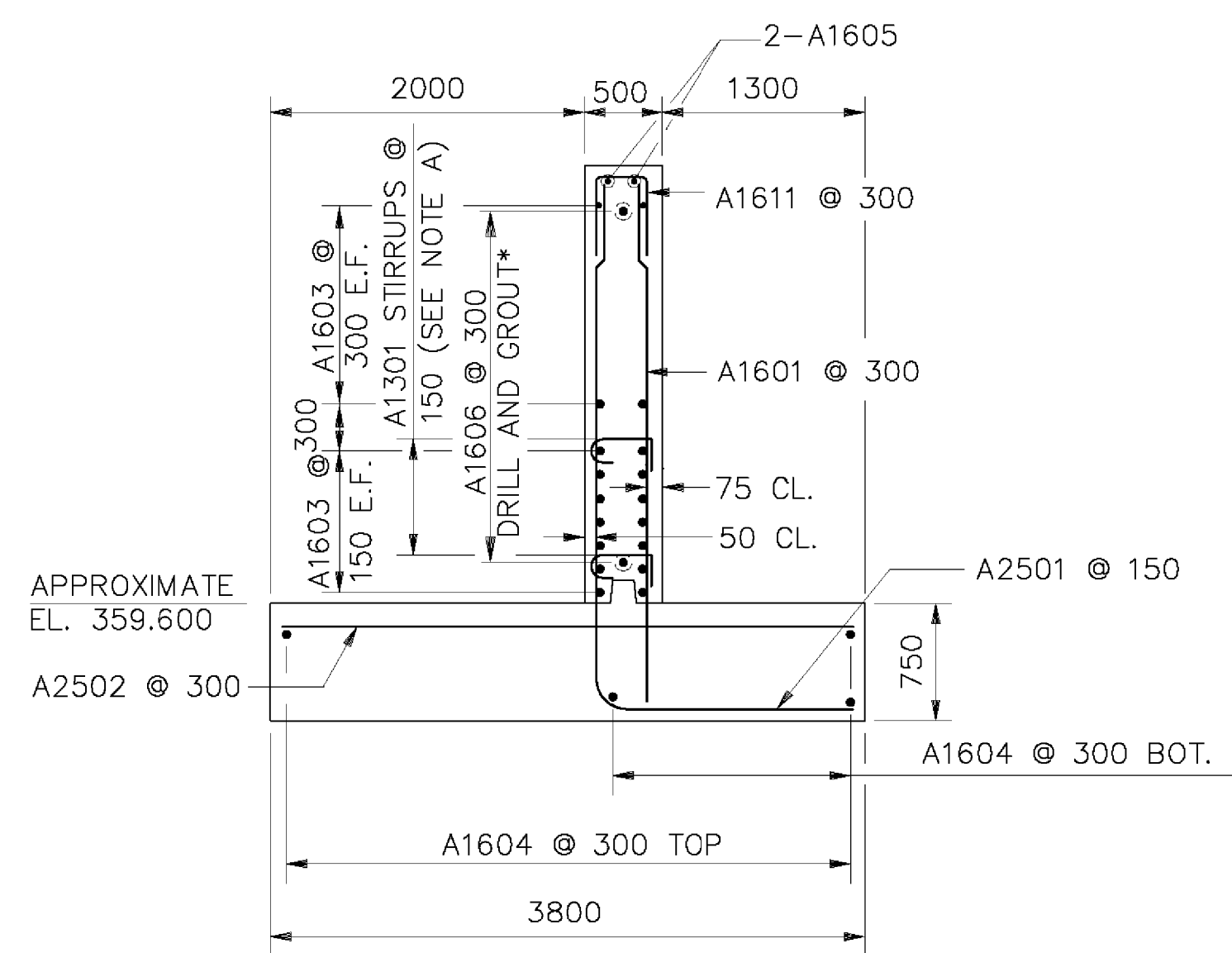


ABUTMENT 1 ELEVATION

SCALE: 1:50
 SCALE IN METERS



VERTICAL SURFACES
 DRILL AND GROUT DETAIL
 N.T.S.



* SEE DRILL AND GROUT DETAIL THIS SHEET

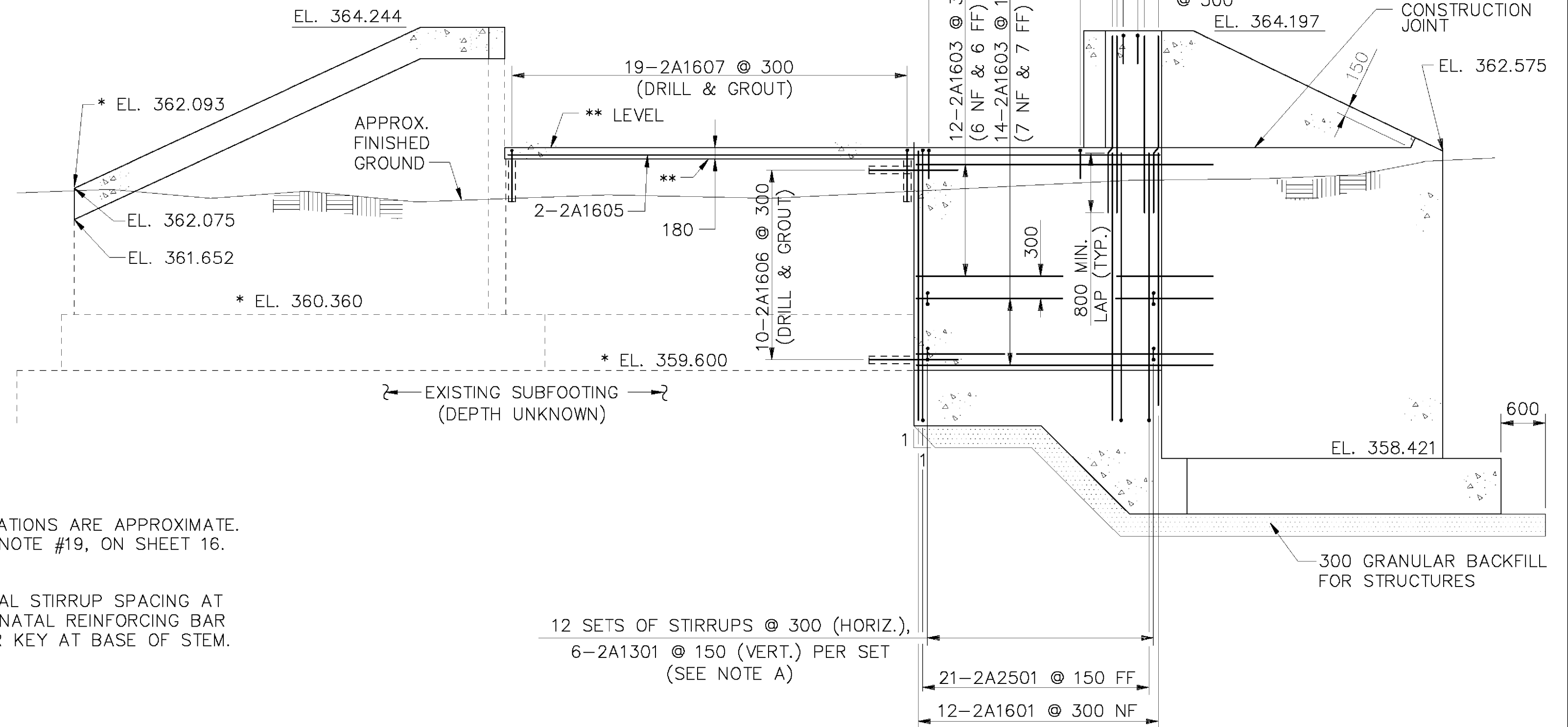
TYPICAL ABUTMENT SECTION

SCALE: 1:40

SCALE IN METERS

* EXISTING ELEVATIONS ARE APPROXIMATE.
 ** SEE GENERAL NOTE #19, ON SHEET 16.

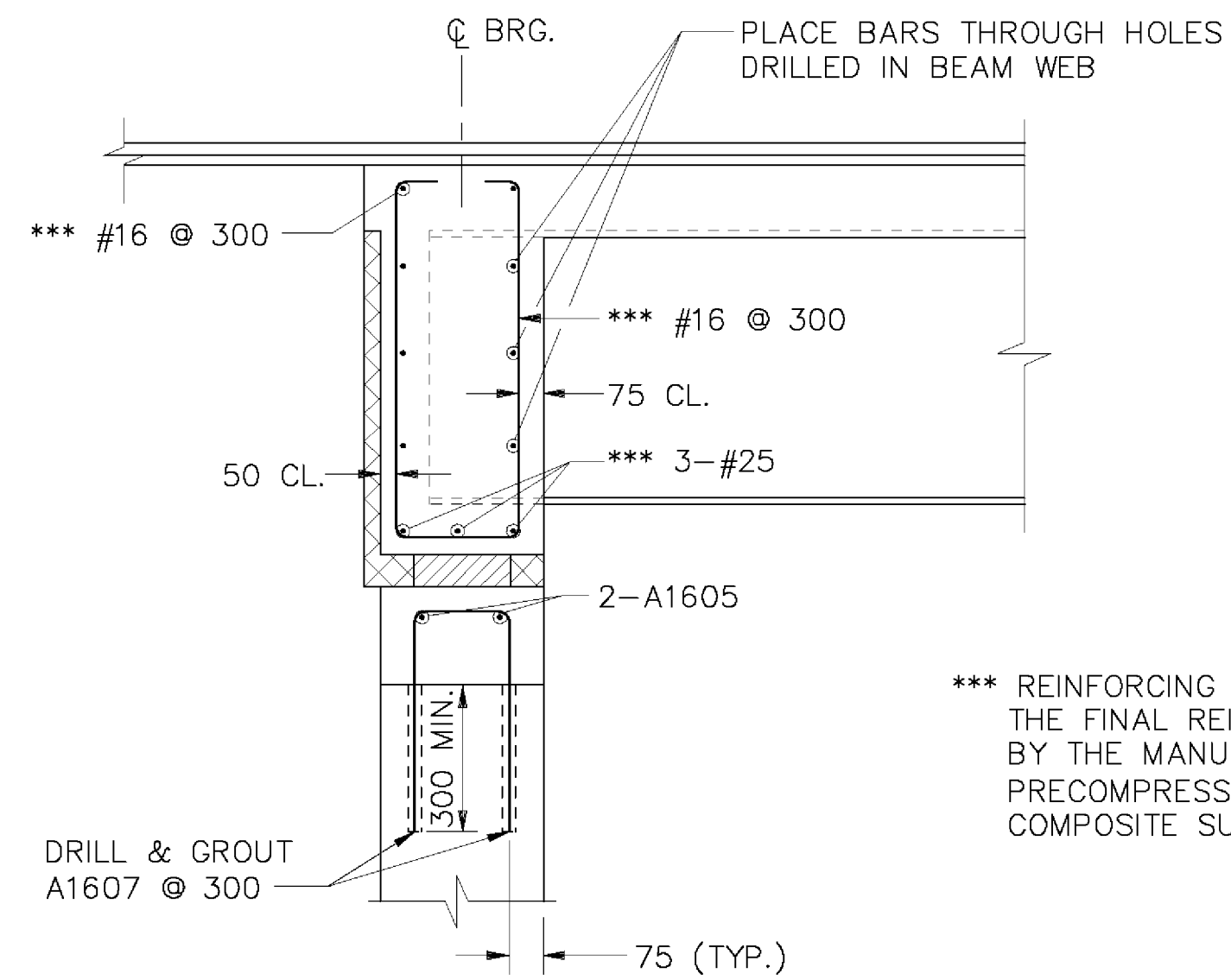
NOTE A:
 BEGIN VERTICAL STIRRUP SPACING AT FIRST HORIZONTAL REINFORCING BAR ABOVE SHEAR KEY AT BASE OF STEM.



ABUTMENT 2 ELEVATION

SCALE: 1:50
 SCALE IN METERS

* SEE REVISED ABUT #2 PLANS ATTACHED BY S. FARNSWORTH



*** REINFORCING BARS SHOWN ARE APPROXIMATE, THE FINAL REINFORCING SHALL BE DESIGNED BY THE MANUFACTURER OF THE PRECAST PRECOMPRESSED CONCRETE/STEEL COMPOSITE SUPERSTRUCTURE.

TYPICAL DECK END REINFORCING

SCALE: 1:20

SCALE IN METERS

REVISIONS

REVISED WINGWALL 2.



STATE OF VERMONT
 AGENCY OF TRANSPORTATION

Town Of	RIPTON	Bridge No.	BRIDGE #17
Highway No.	TH 18	Log Sta.	
		Surv. Sta.	
TH 18 OVER SOUTH BRANCH MIDDLEBURY RIVER ABUTMENT REINFORCING			
Designed By	Y I LIU	Drawn By	W J GAYNOR
Checked By	B P GUZAS	Date	8/09
		Bridge Design Supervisor	R L JOY
		Date	10/09
PROJECT	RIPTON	PROJECT NO.	FH 010-1(2)
I.G.C. Info.			
Bridge Sheet No.		Sheet	20R of 26