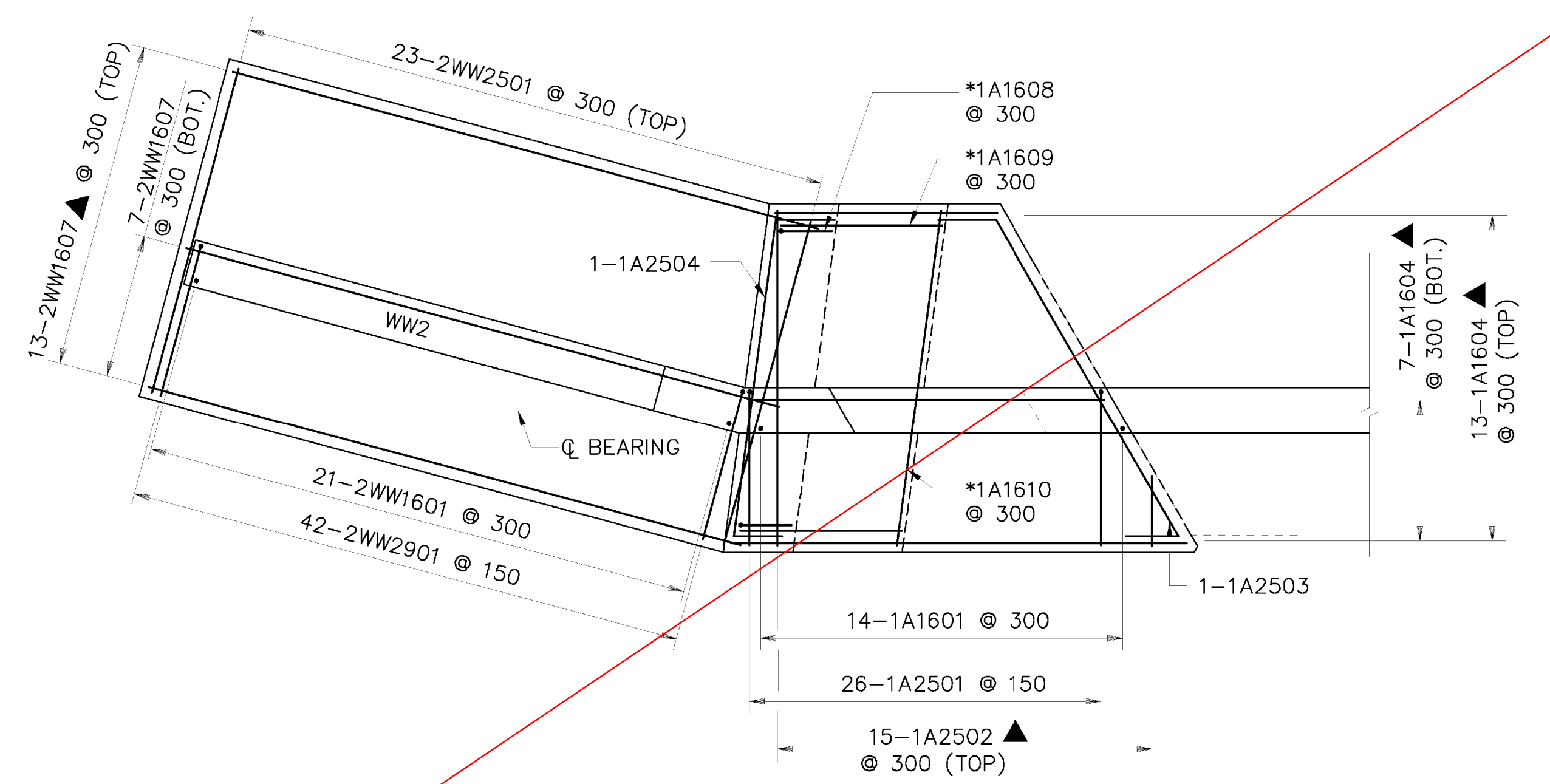
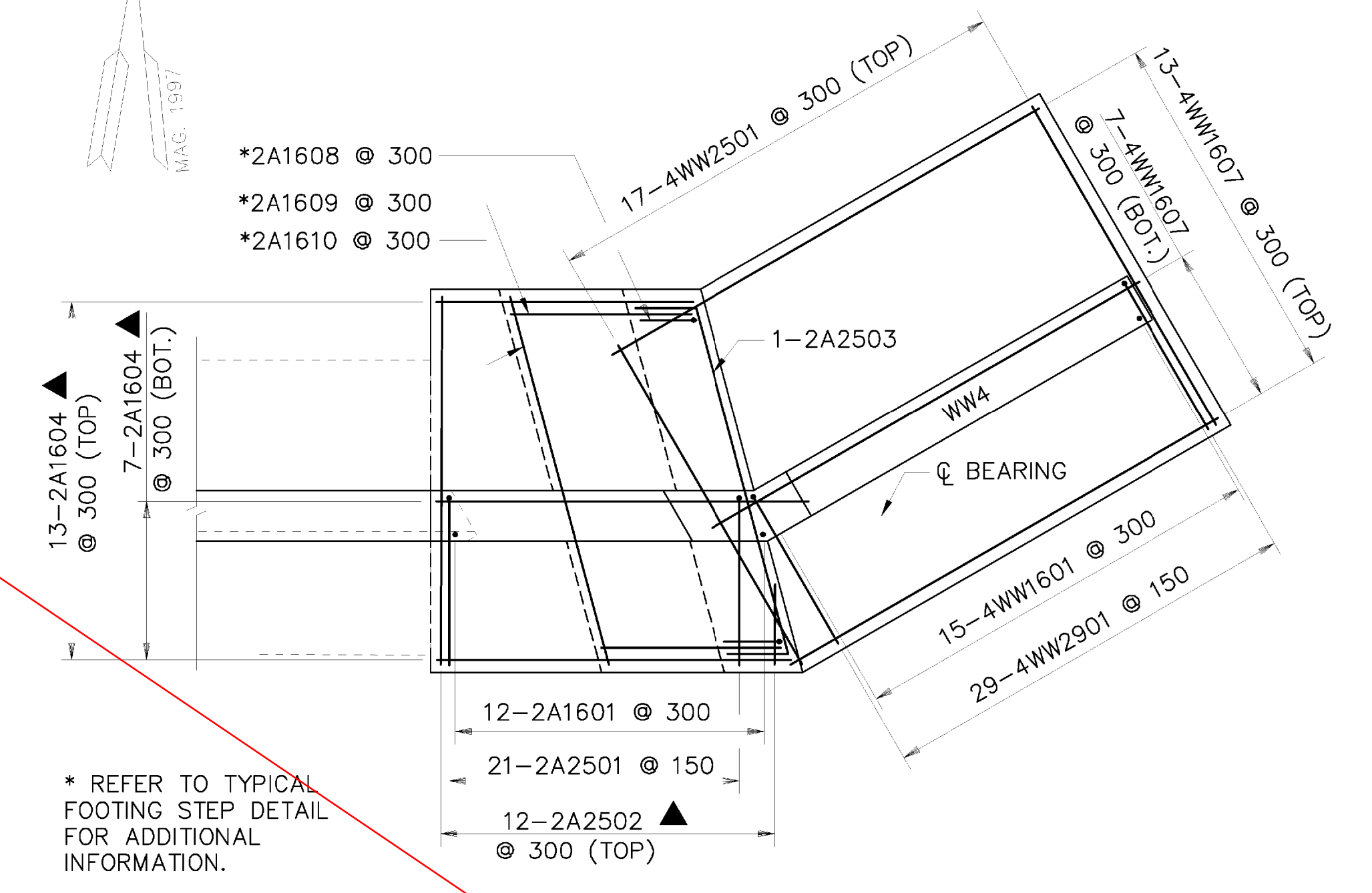
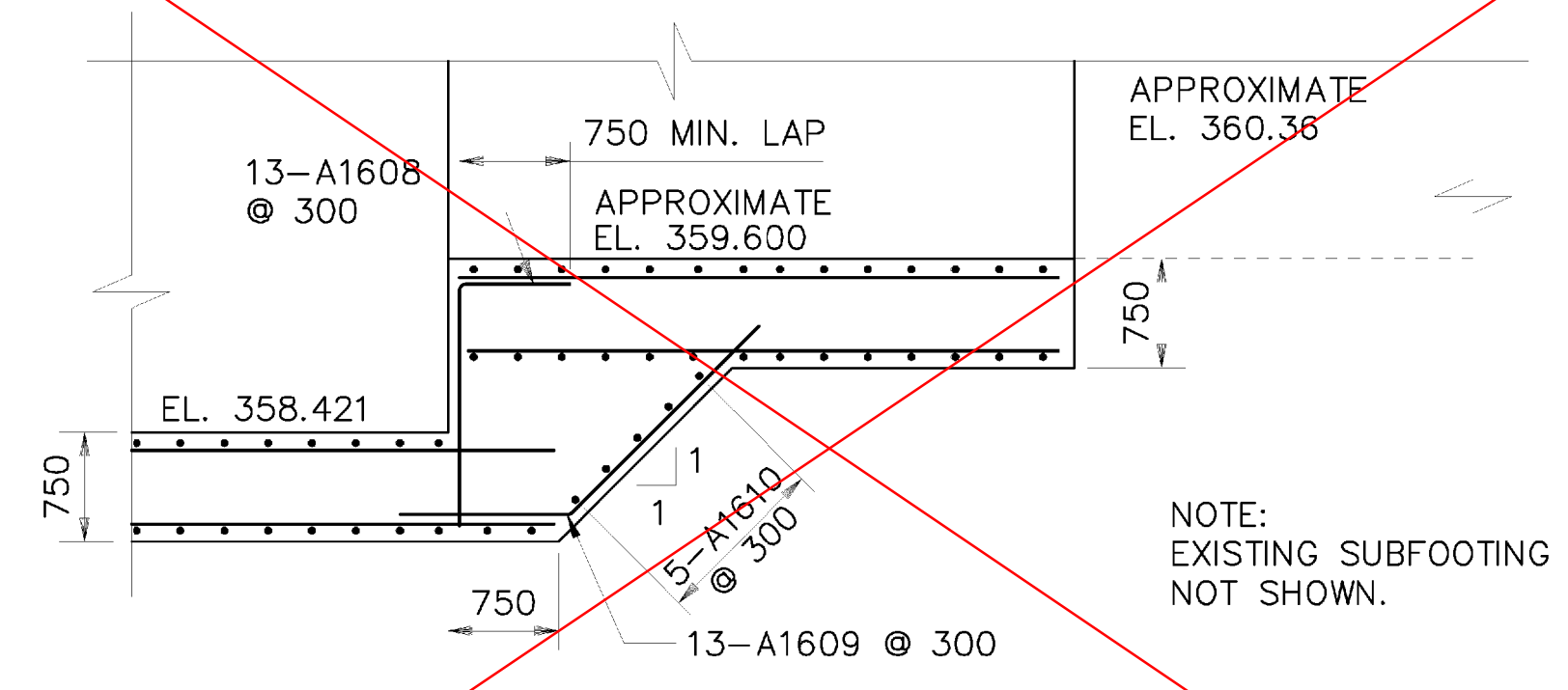


\*\*\* SEE GENERAL NOTE 3 ON SHEET 16 OF 26.

**ABUTMENT 1 MASONRY**  
SCALE: 1:50  
SCALE IN METERS

**ABUTMENT 2 MASONRY**  
SCALE: 1:50  
SCALE IN METERS



SEE REVISED SHEET

NOTE: SEE TYPICAL ABUTMENT SECTION, SHEET 20 AND TYPICAL WINGWALL SECTION, SHEET 21

- ▲ = CUT TO FINISH FIELD
- = EPOXY COATED
- = EACH END
- = EACH FACE
- + = FAR FACE
- = NEAR FACE

**STATE OF VERMONT**  
**AGENCY OF TRANSPORTATION**

Town Of **RIPTON** Bridge No. **BRIDGE #17**  
 Highway No. **TH 18** Log Sta. **---**  
 Surv. Sta. **---**

**TH 18 OVER SOUTH BRANCH MIDDLEBURY RIVER**  
**FOOTING DETAILS**

Designed By **B P GUZAS** Drawn By **W J GAYNOR**  
 Checked By **Y I LIU** Date **8/09** Bridge Design Supervisor **R L JOY** Date **10/09**

PROJECT **RIPTON** PROJECT NO. **FH 010-1(2)**  
 I.G.C. Info. **---** Bridge Sheet No. **---** Sheet 18 of 26