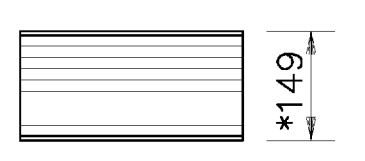
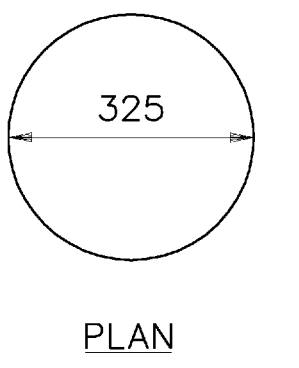


**DECK PLAN**  
SCALE IN METERS  
SCALE: 1:50

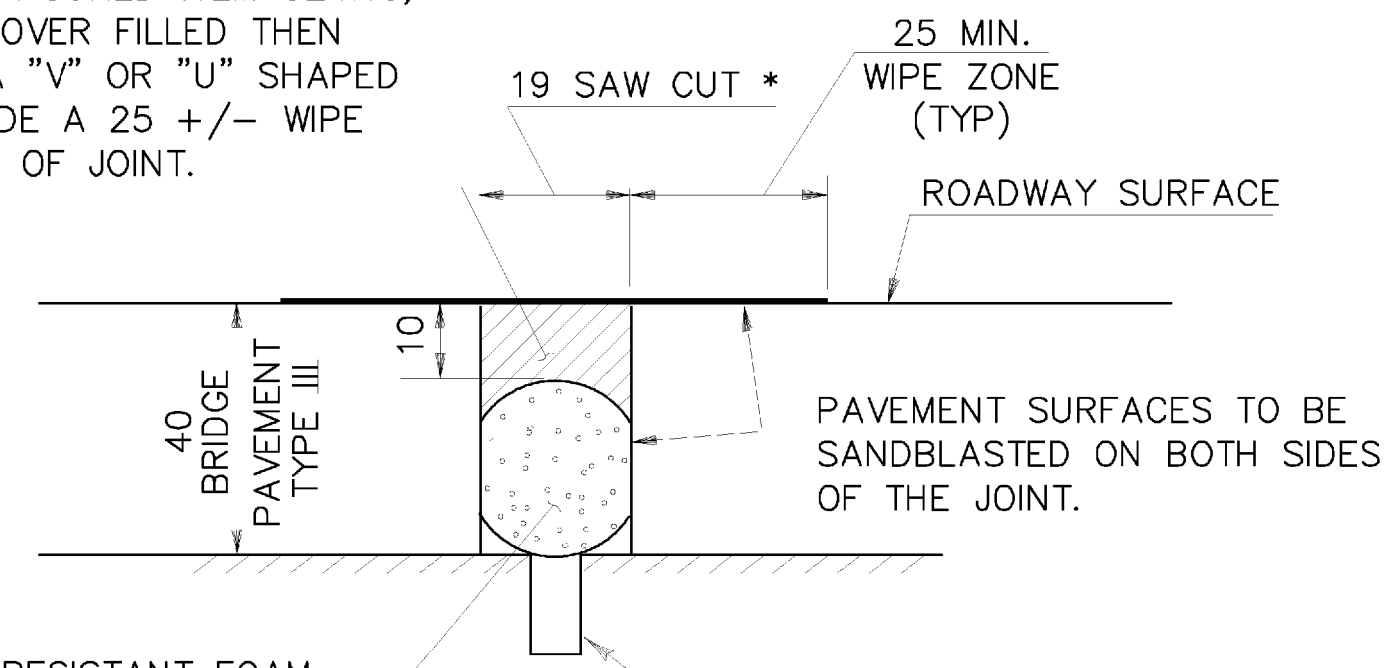


**ELEVATION**

\* 2-6 mm COVER LAYERS, 9-13 mm LAYERS OF RUBBER ALTERNATING WITH 10 LAYERS OF 2mm STEEL PLATE REINFORCEMENT

**BEARING PAD**  
SCALE IN METERS  
SCALE: 1:10

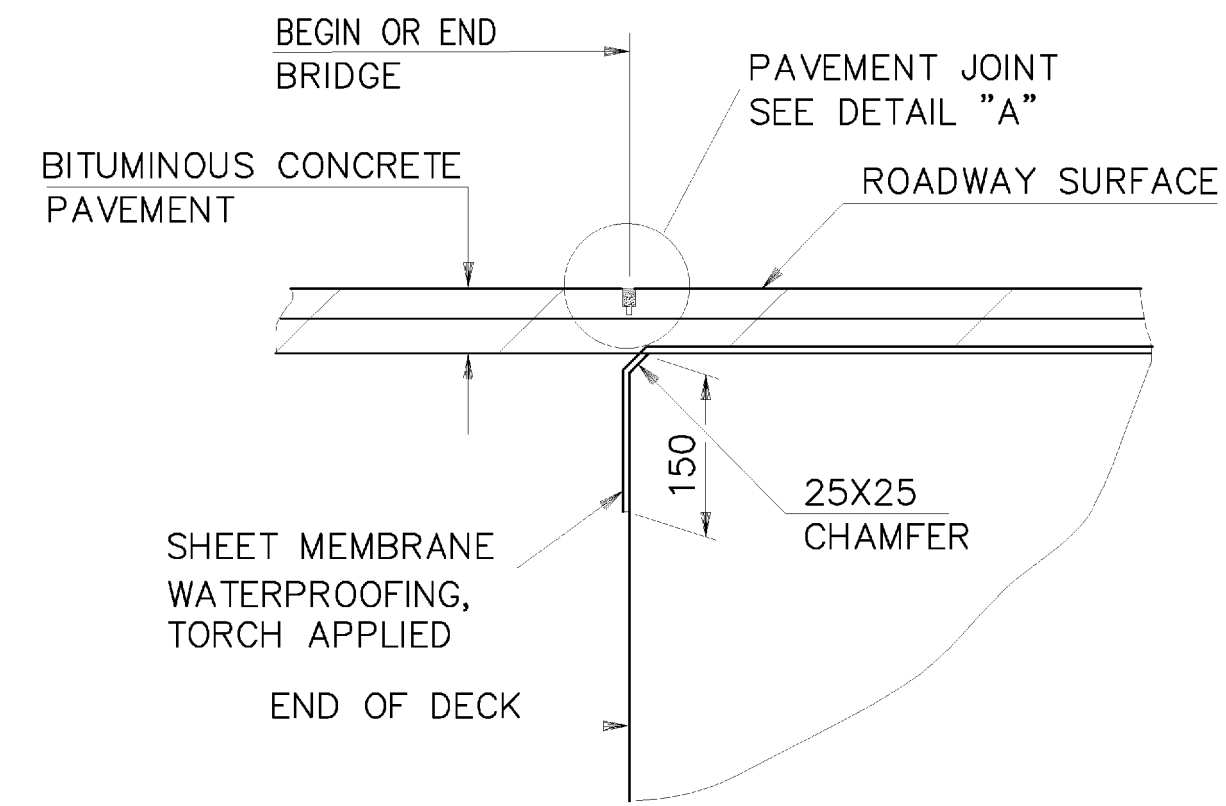
JOINT SEALER, COLD POURED ITEM 524.13, SHALL BE SLIGHTLY OVER FILLED THEN WIPED FLUSH WITH A "V" OR "U" SHAPED SQUEEGEE TO PROVIDE A 25 +/- WIPE ZONE ON EACH SIDE OF JOINT.



**DETAIL 'A'**  
NOT TO SCALE

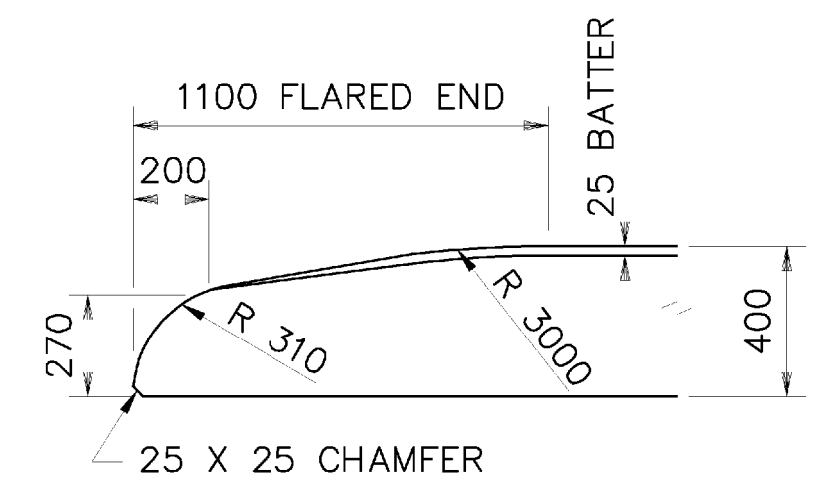
22 DIA. HEAT RESISTANT FOAM BACKER ROD, COMPRESSION FIT REQUIRED TO INSURE THAT THE ROD POSITION IS MAINTAINED DURING FILLING OPERATION, COST TO BE INCLUDED WITH UNIT PRICE BID FOR JOINT SEALER

6 WIDE X 13 DEEP SAW CUT INTO BOTTOM COURSE OF PAVEMENT. TO BE MADE DURING THE SAME WORKDAY AS PLACEMENT (COST TO BE INCLUDED WITH UNIT PRICE BID FOR JOINT SEALER)

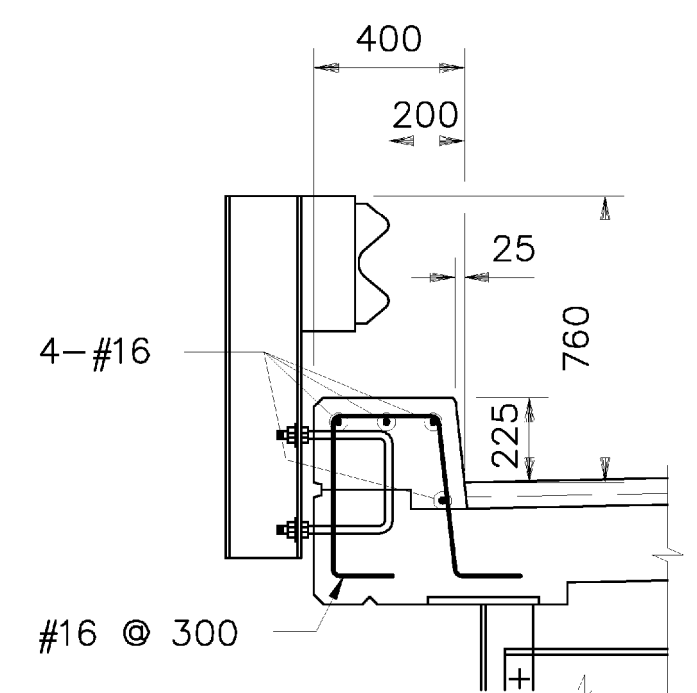


**SAWCUT JOINT DETAIL**  
NOT TO SCALE

\* JOINT IS TO BE LOCATED ACCURATELY BY STRING LINING, OR OTHER MEANS, PRIOR TO PAVING, SO THAT THE SAW CUTS WILL BE MADE DIRECTLY OVER THE END OF THE BRIDGE DECK. JOINT SHALL BE CUT DRY IN A SINGLE PASS AND BE SEALED WITHIN 24 HOURS OR PRIOR TO EXPOSURE TO TRAFFIC. JOINT SHALL BE CLEANED PRIOR TO APPLYING THE JOINT SEALER. SEE VERMONT SPECIFICATION 524.

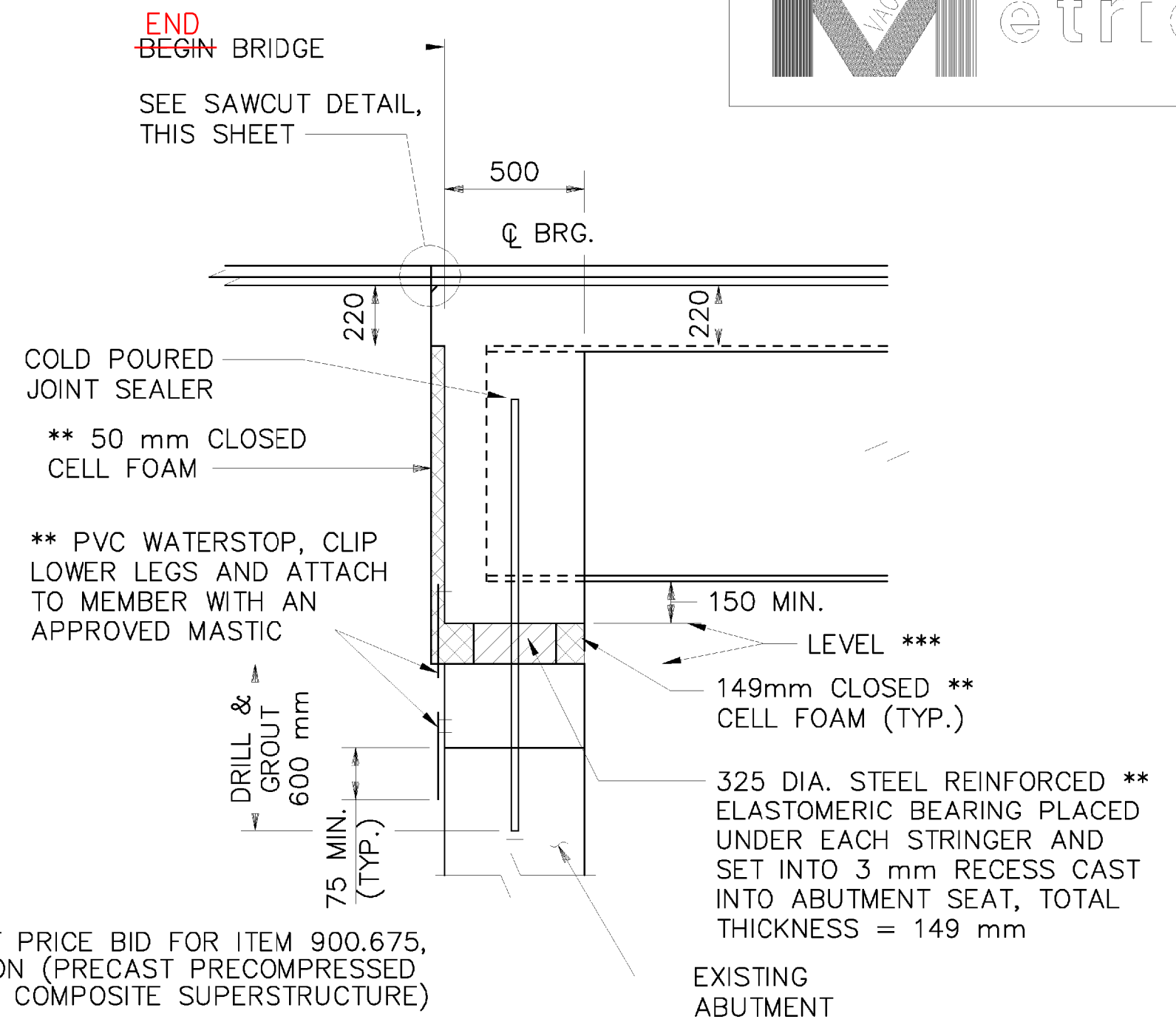


**FLARED END CURB DETAIL**  
SCALE IN METERS  
SCALE: 1:20

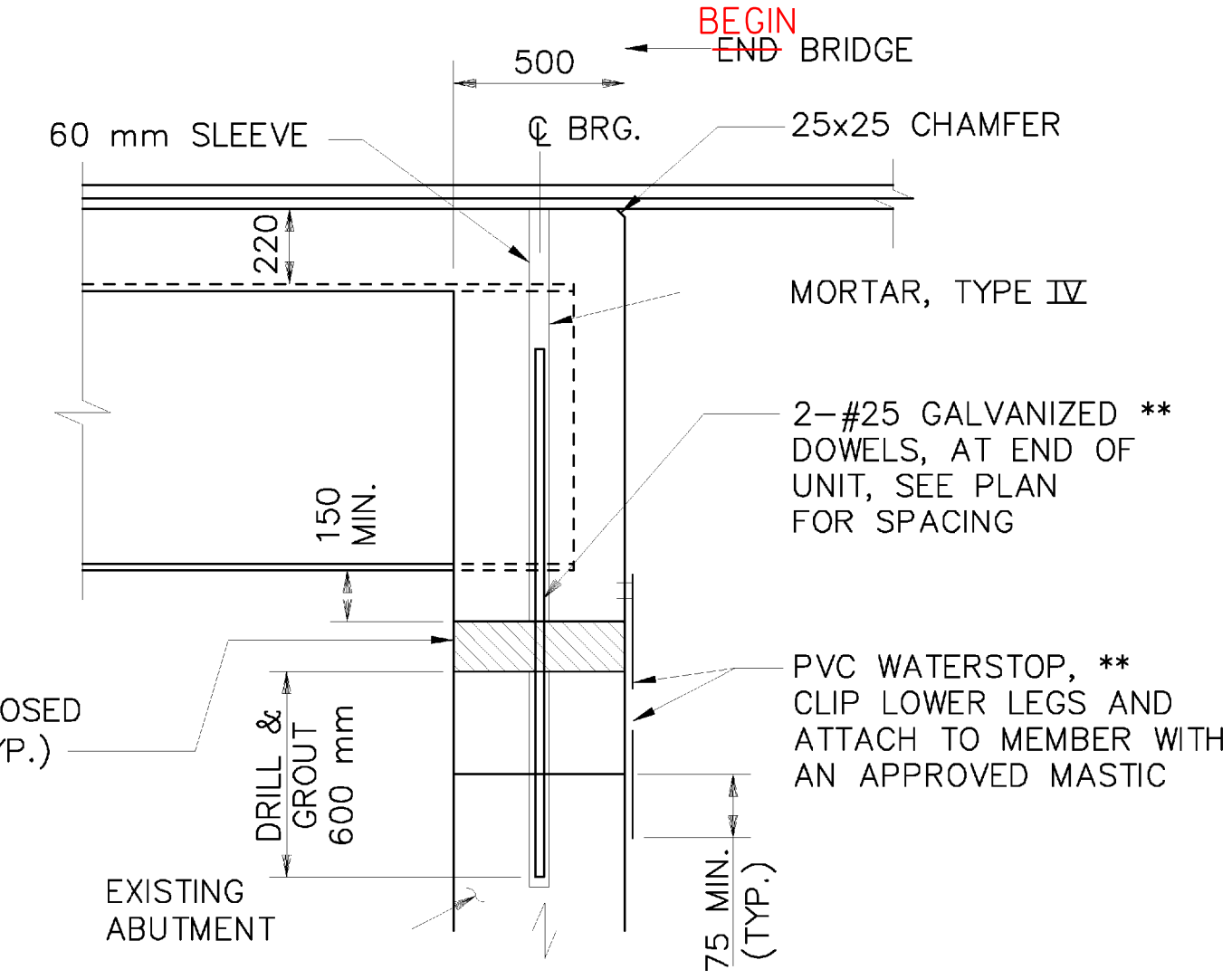


**BRUSH CURB DETAIL**  
SCALE IN METERS  
SCALE: 1:20

\*\* NOTE: INFORMATION SHOWN IN THIS DETAIL IS FOR REFERENCE ONLY. THE MANUFACTURER SHALL PROVIDE EQUIVALENT REINFORCING AND POST ANCHORAGES.



**EXPANSION END DETAIL**  
SCALE IN METERS  
SCALE: 1:20



**FIXED END DETAIL**  
SCALE IN METERS  
SCALE: 1:20

NOTE: ELASTOMERIC BEARING UNDER GIRDER NOT SHOWN.

<b>STATE OF VERMONT</b>	
<b>AGENCY OF TRANSPORTATION</b>	
Town Of	RIPTON
Highway No.	TH 18
TH 18 OVER SOUTH BRANCH MIDDLEBURY RIVER	
SUPERSTRUCTURE DETAILS	
Designed By	B P GUZAS
Checked By	Y I LIU
Date	8/09
Drawn By	W J GAYNOR
Bridge Design Supervisor	R L JOY
Date	10/09
PROJECT	RIPTON
I.G.C. Info.	Bridge Sheet No.
Project No.	FH 010-1(2)
Sheet 17 of 26	