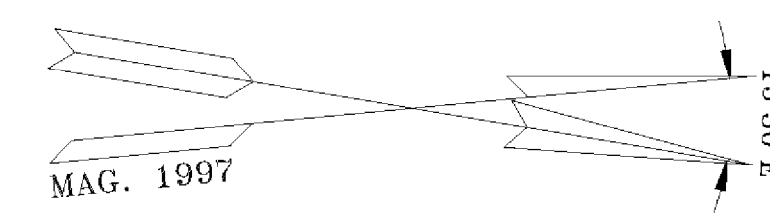


BsE (*Berkshire & Marlowe Extremely Stony Loam*)

PsC (*Peru Extremely Stony Loam*)



PsC

BEGIN BRIDGE
STA 2+071.607
FG EL 363.853

END BRIDGE
STA 2+089.907
FG EL 364.064

APPROXIMATE EDGE OF WETLAND

EXISTING ROW

TH #18

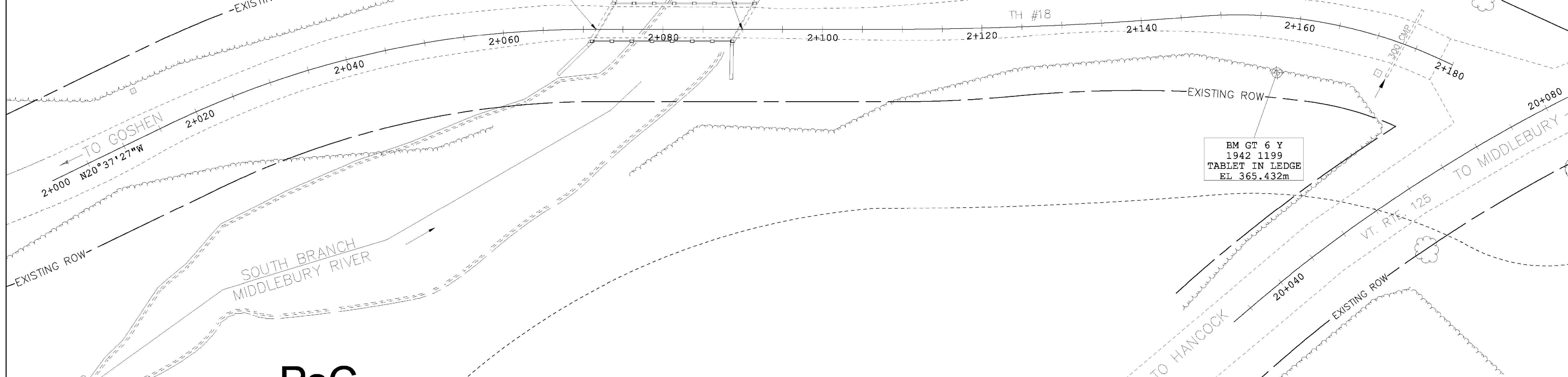
TO GOSHEN
N20°37'27"W

BM GT 6 Y
1942 1199
TABLET IN LEDGE
EL 365.432m

SOUTH BRANCH
MIDDLEBURY RIVER

PsC

CbC (*Cabot Extremely Stony Loam*)



EPSC - EXISTING CONDITIONS

PROJECT NAME: RIPTON	FILE NAME: z89e039border.dgn	PLOT DATE: \$\$\$DATE\$\$\$
PROJECT NUMBER: FH OIO-I(2)	PROJECT LEADER: Farnsworth	DRAWN BY: Weeber
	DESIGNED BY: Farnsworth	CHECKED BY: Farnsworth
	z89e039excond.1	SHEET 15bR OF 26

REVISIONS
REVISED WEST EDGE OF RIVER LINE.

