

STONE FILL, TYPE I ,
BEHIND WINGWALLS
300 WIDE x
300 DEEP (TYP.)

Q BRG. ABUT. 1
STA 2+071.896
F.G. EL. 363.857

BEGIN BRIDGE
STA 2+071.607
F.G. EL. 363.853

STA 2+056.500
END AGGREGATE SURFACE
COURSE/BEGIN BITUMINOUS
CONCRETE PAVEMENT

EXISTING ROW

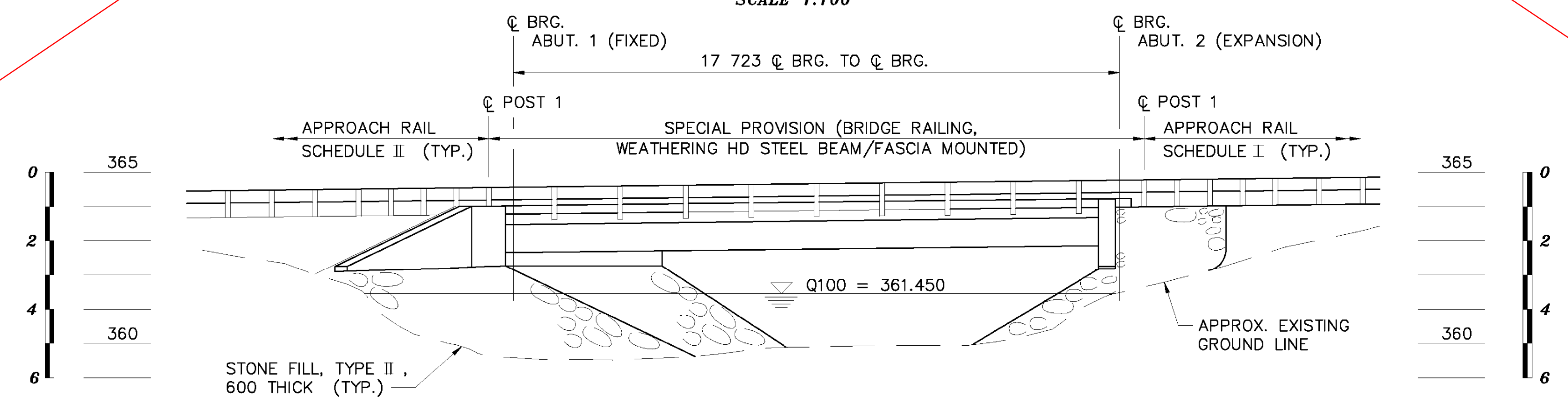
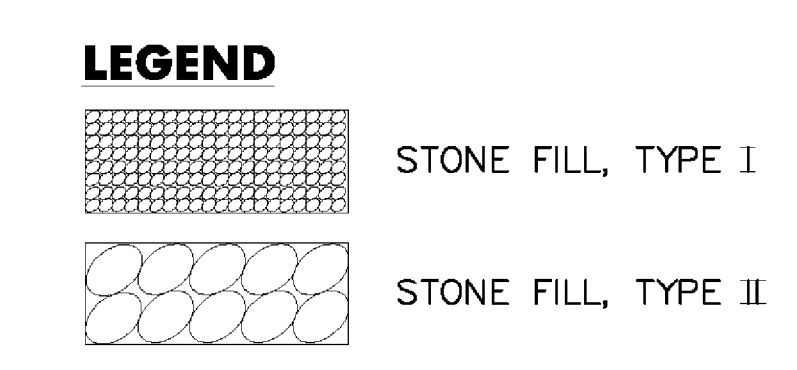
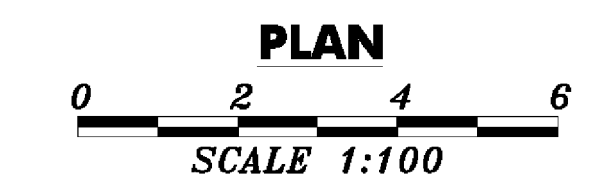
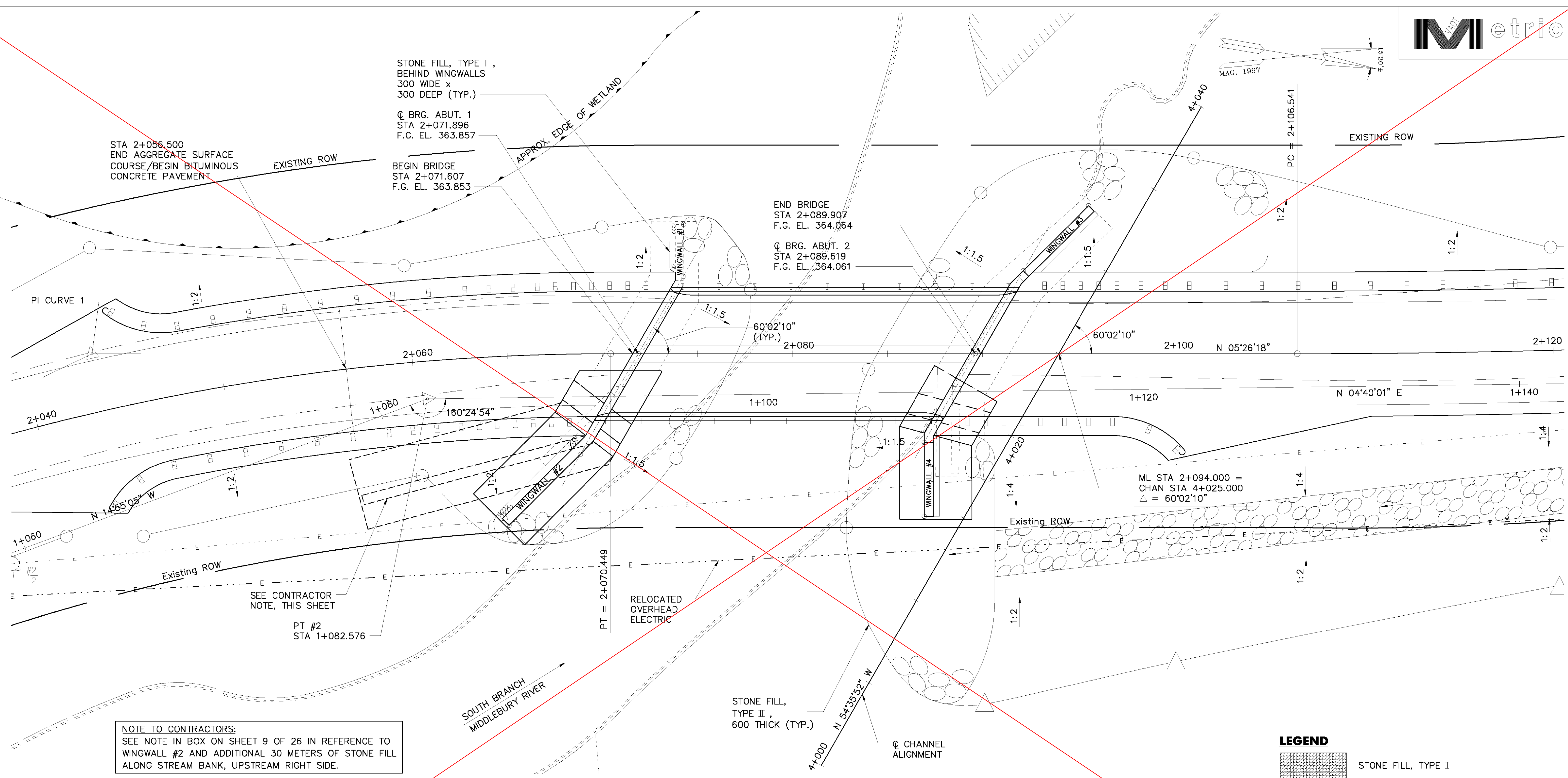
END BRIDGE
STA 2+089.907
F.G. EL. 364.064

Q BRG. ABUT. 2
STA 2+089.619
F.G. EL. 364.061

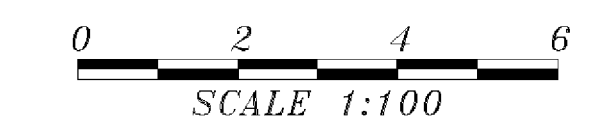
ML STA 2+094.000 =
CHAN STA 4+025.000
△ = 60'02'10"

NOTE TO CONTRACTORS:
SEE NOTE IN BOX ON SHEET 9 OF 26 IN REFERENCE TO
WINGWALL #2 AND ADDITIONAL 30 METERS OF STONE FILL
ALONG STREAM BANK, UPSTREAM RIGHT SIDE.

M:\1734300_Ripton_17\BRDC\Z89E039CPE_01.DGN



ELEVATION ALONG UPSTREAM FASCIA



STATE OF VERMONT		AGENCY OF TRANSPORTATION	
Town Of	RIPTON	Bridge No.	BRIDGE #17
Highway No.	TH 18	Log Sta.	
		Surv. Sta.	
TH 18 OVER SOUTH BRANCH MIDDLEBURY RIVER			
GENERAL PLAN AND ELEVATION			
Designed By	B P GUZAS	Drawn By	W J GAYNOR
Checked By	Y I LIU	Date	8/09
		Bridge Design Supervisor	R L JOY
		Date	10/09
PROJECT	RIPTON	PROJECT NO.	FH 010-1(2)
I.G.C. Info.			
Bridge Sheet No.		Sheet	14 of 26

