

**ALIGNMENT DATA**

CONSTRUCTION CENTERLINE	SURVEY BASELINE		NORTHING	EASTING
	STATION	OFFSET		
BEGIN PROJECT STA 2+020.000	1+042.887	6116 LT	4829.0966	9993.6156
PI CURVE 1 STA 2+043.636 BK. = STA 2+042.676 AH.	1+066.399	8537 LT	4851.1937	9985.2230
PI CURVE 2 STA 2+126.878 BK. = STA 2+126.856 AH.	1+148.680	1487 LT	4935.0177	9993.2034
PI CURVE 3 STA 2+163.053 BK. = STA 2+162.343 AH.	1+184.783	3941 LT	4971.2112	9993.6961
END PROJECT STA 2+150.000	1+171.764	2990 LT	4958.1589	9993.5841
<b>CURVE 1</b>		<b>CURVE 2</b>		<b>CURVE 3</b>
Δ = 26°03'45"		Δ = 04°39'30"		Δ = 29°36'45"
R = 120.000		R = 500.000		R = 60.000
T = 27.773		T = 20.337		T = 15.860
L = 54.586		L = 40.652		L = 31.010
E = 3.172		E = 0.413		E = 2.061

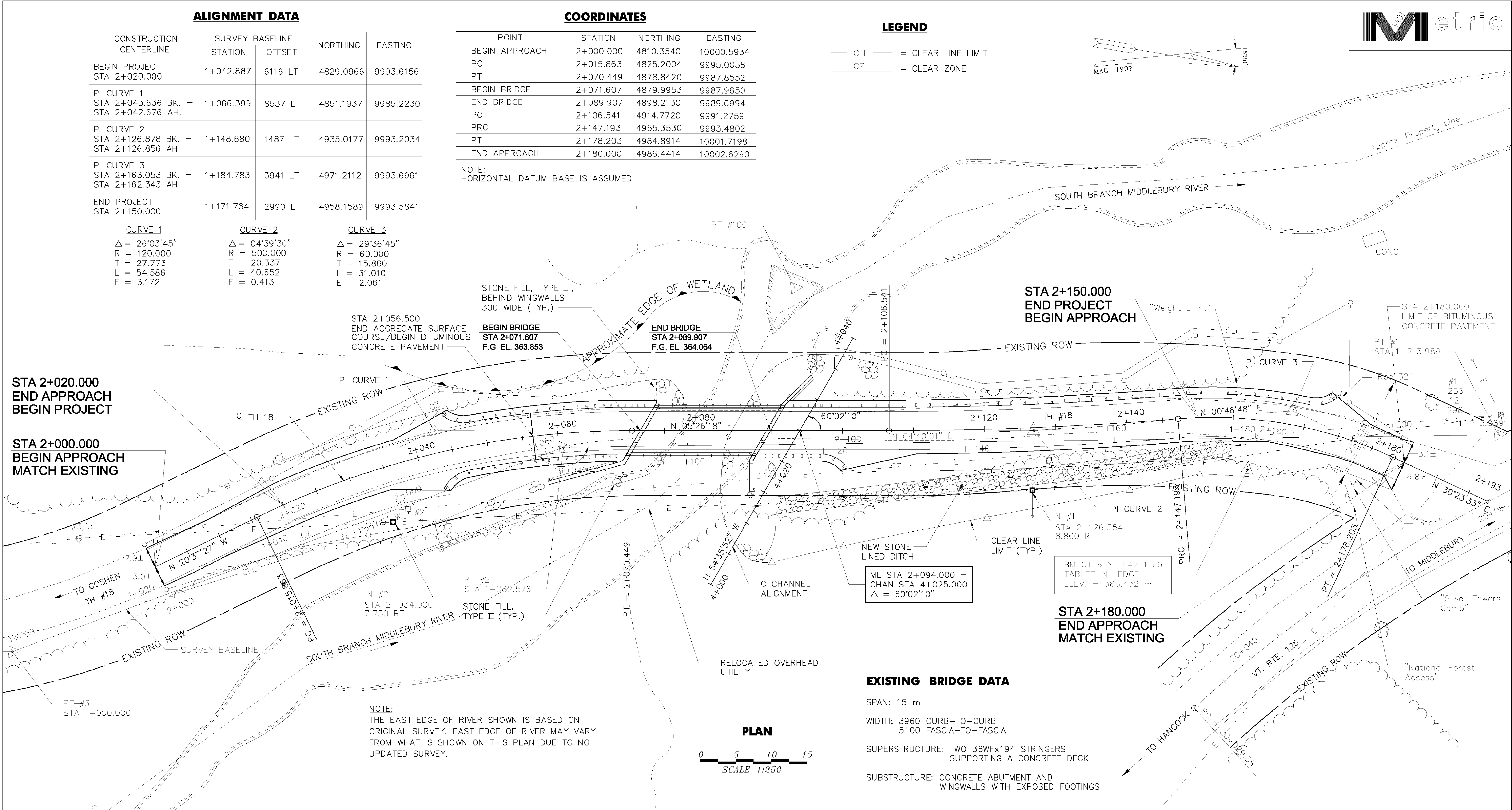
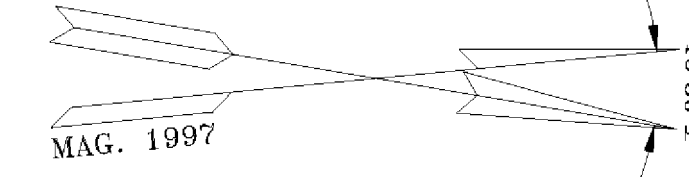
**COORDINATES**

POINT	STATION	NORTHING	EASTING
BEGIN APPROACH	2+000.000	4810.3540	10000.5934
PC	2+015.863	4825.2004	9995.0058
PT	2+070.449	4878.8420	9987.8552
BEGIN BRIDGE	2+071.607	4879.9953	9987.9650
END BRIDGE	2+089.907	4898.2130	9989.6994
PC	2+106.541	4914.7720	9991.2759
PRC	2+147.193	4955.3530	9993.4802
PT	2+178.203	4984.8914	10001.7198
END APPROACH	2+180.000	4986.4414	10002.6290

NOTE:  
HORIZONTAL DATUM BASE IS ASSUMED

**LEGEND**

— CLL — = CLEAR LINE LIMIT  
— CZ — = CLEAR ZONE



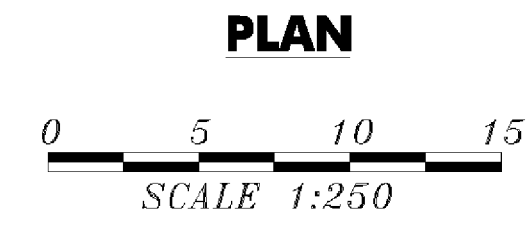
STA 2+020.000  
END APPROACH  
BEGIN PROJECT

STA 2+000.000  
BEGIN APPROACH  
MATCH EXISTING

STA 2+150.000  
END PROJECT  
BEGIN APPROACH

STA 2+180.000  
END APPROACH  
MATCH EXISTING

NOTE:  
THE EAST EDGE OF RIVER SHOWN IS BASED ON ORIGINAL SURVEY. EAST EDGE OF RIVER MAY VARY FROM WHAT IS SHOWN ON THIS PLAN DUE TO NO UPDATED SURVEY.



**EXISTING BRIDGE DATA**

SPAN: 15 m  
WIDTH: 3960 CURB-TO-CURB  
5100 FASCIA-TO-FASCIA  
SUPERSTRUCTURE: TWO 36WFx194 STRINGERS  
SUPPORTING A CONCRETE DECK  
SUBSTRUCTURE: CONCRETE ABUTMENT AND  
WINGWALLS WITH EXPOSED FOOTINGS

**CONSTRUCTION NOTES**

**REMOVING SIGNS  
SETTING SALVAGED POSTS  
ERECTING SALVAGED SIGN**  
STA 2+167.4, 5.3 LT REMOVE AND RESET  
STA 2+168.5, 5.5 LT REMOVE AND RESET  
STA 2+155.0, 3.9 LT REMOVE AND RESET  
REMOVING SIGNS PAID UNDER ITEM 675.50  
SETTING SALVAGED POSTS PAID UNDER ITEM 675.61  
ERECTING SALVAGED SIGNS PAID UNDER ITEM 675.60

**SPECIAL PROVISION (BRIDGE RAILING, WEATHERING  
HD STEEL BEAM/FASCIA MOUNTED)**  
STA 2+072.299, 3.300 LT - STA 2+093.252, 3.300 LT  
STA 2+068.200, 3.300 RT - STA 2+089.217, 3.300 RT  
(PAID UNDER 900.640)

**SPECIAL PROVISION (HD STEEL GUARDRAIL,  
WEATHERING) (WOOD POSTS)**  
STA 2+044.098, 4.800 LT - STA 2+072.299, 3.300 LT  
STA 2+093.252, 3.300 LT - STA 2+168.075, 4.800 LT  
STA 2+042.943, 4.800 RT - STA 2+068.200, 3.300 RT  
STA 2+089.217, 3.300 RT - STA 2+100.393, 4.800 RT  
(PAID UNDER ITEM 900.640)

**ANCHOR FOR STEEL BEAM RAIL**  
STA 2+046.400, 3.400 LT  
STA 2+166.700, 3.400 LT  
STA 2+044.800, 3.400 RT  
STA 2+098.600, 3.400 RT  
(PAID UNDER ITEM 621.60)

NOTE: CONSTRUCTION NOTE OFFSETS ARE IN METERS.

**REVISIONS**

REVISED WEST EDGE OF RIVER LINE.
REVISED WINGWALL 2.
ADDED STONE FILL ALONG WEST SIDE OF CHANNEL.



**STATE OF VERMONT  
AGENCY OF TRANSPORTATION**

Town Of	RIPTON	Bridge No.	BRIDGE #17
Highway No.	TH 18	Log Sta.	
		Surv. Sta.	
TH 18 OVER SOUTH BRANCH MIDDLEBURY RIVER ROADWAY PLAN			
Designed By	B P GUZAS	Drawn By	W J GAYNOR
Checked By	W R MERWARTH	Bridge Design Supervisor	R L JOY
	Date 8/09		Date 10/09
PROJECT	RIPTON	PROJECT NO.	FH 010-1(2)
I.G.C. Info.		Bridge Sheet No.	Sheet 9 R of 26

