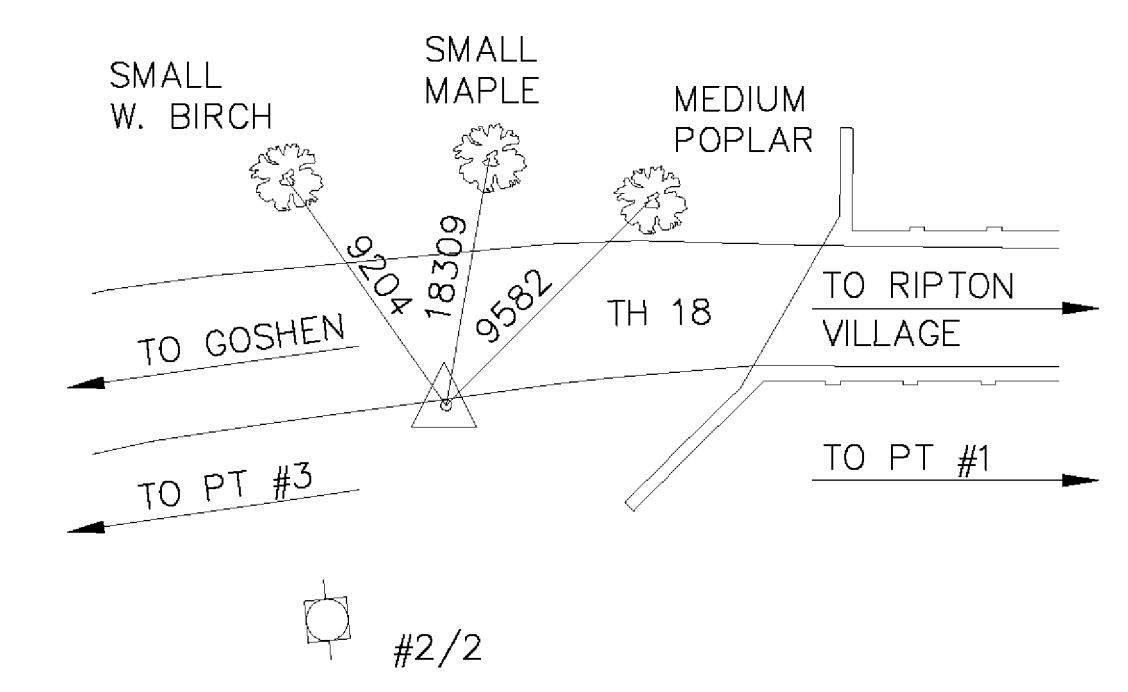
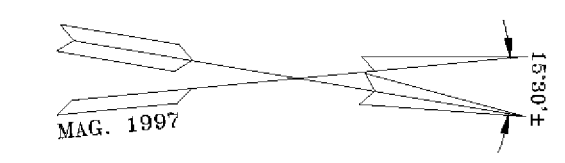
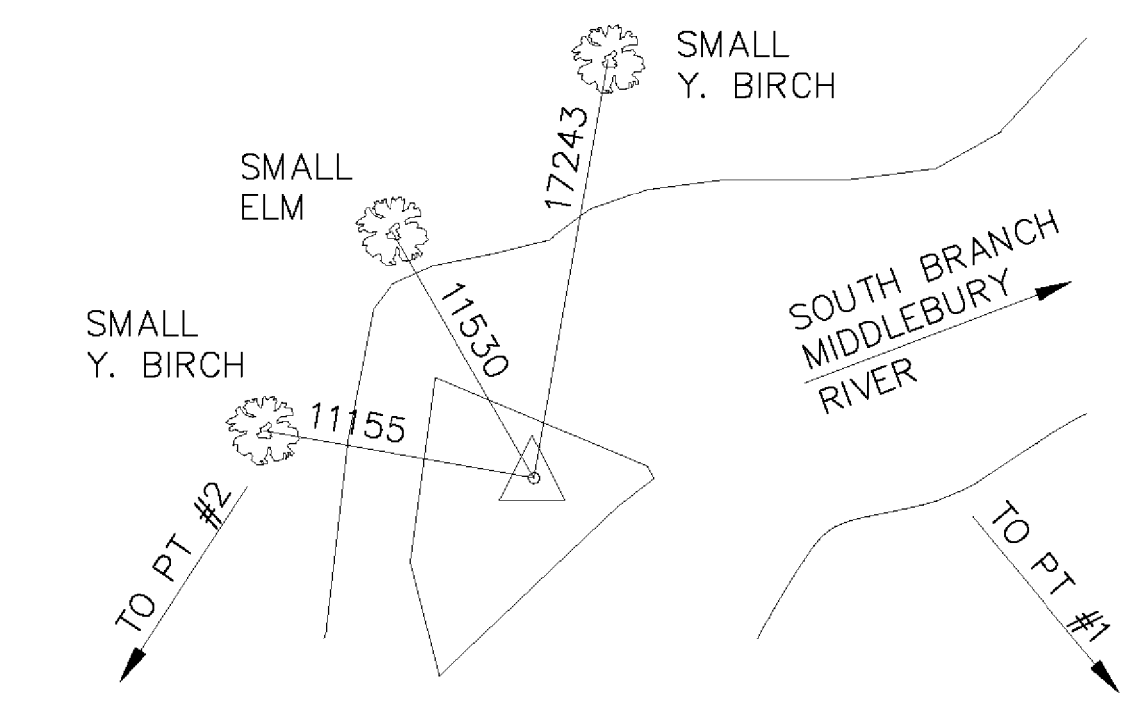
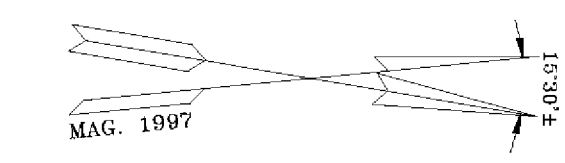


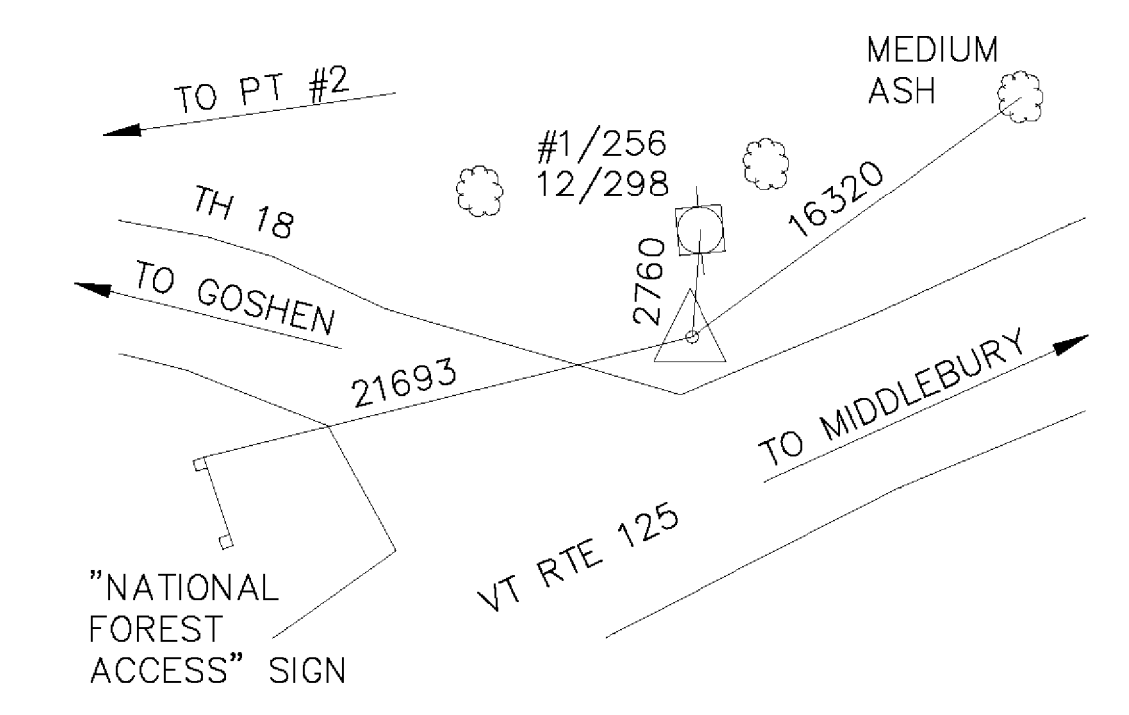
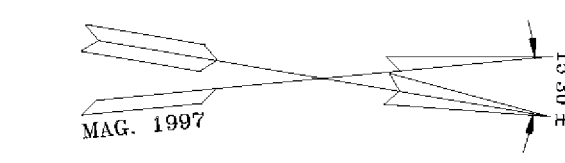
PT #3  
STA 1+000.000



PT #2  
STA 1+082.576

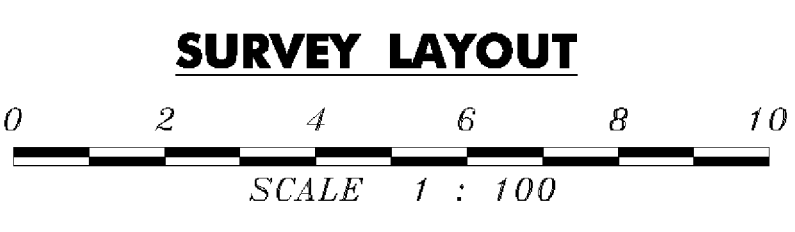
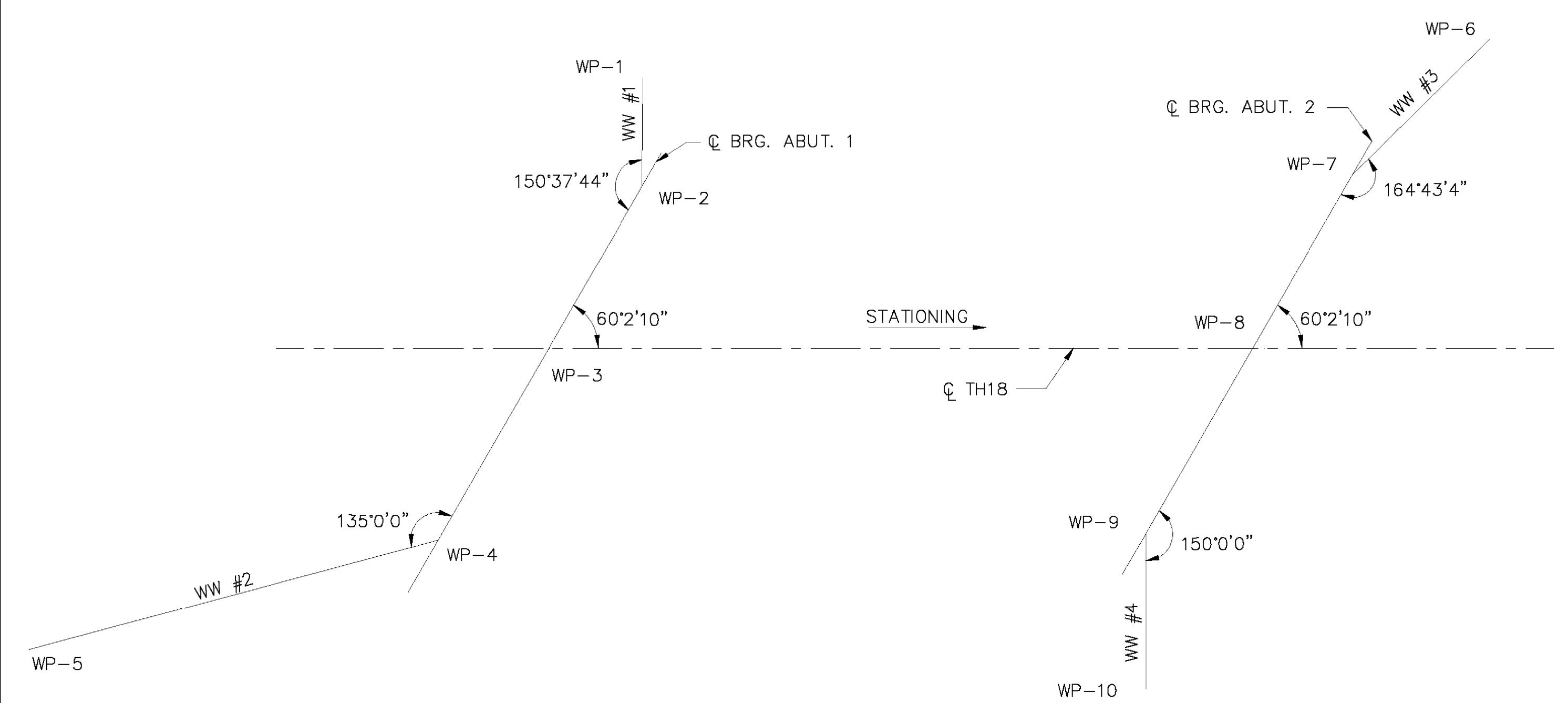


PT #100 (NAIL IN LEDGE)  
STA 1+115.424, LT 21 970



PT #1  
STA 1+213.989

**SWING TIES TO SURVEY BASELINE**  
NOT TO SCALE



**WORKING POINT RELATIONS**

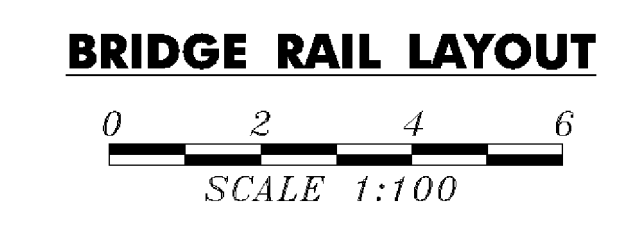
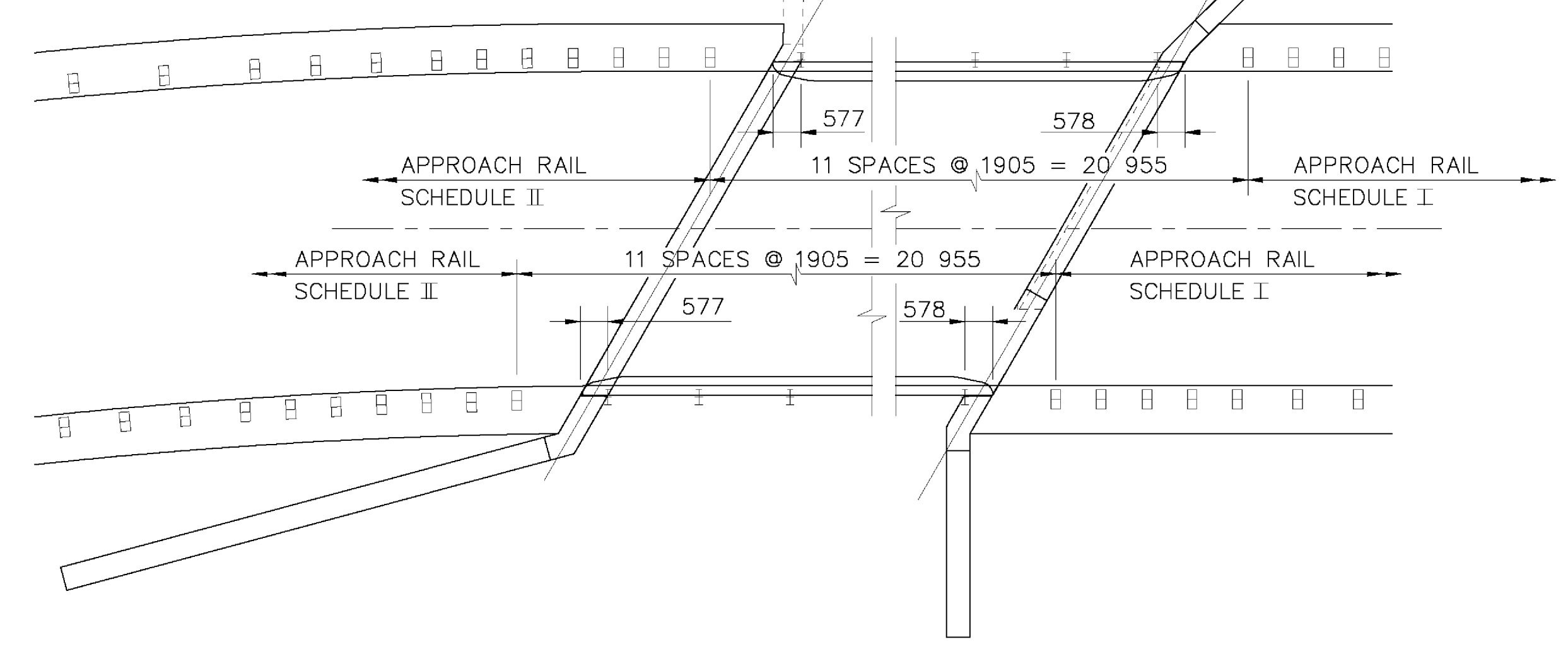
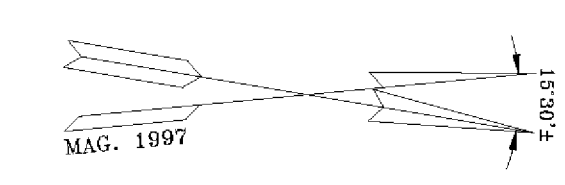
DIST. FROM WP-1 TO WP-2 = 2730  
 DIST. FROM WP-2 TO WP-3 = 4703  
 DIST. FROM WP-3 TO WP-4 = 5565  
 DIST. FROM WP-4 TO WP-5 = 10854  
 DIST. FROM WP-3 TO WP-8 = 17 723  
 DIST. FROM WP-6 TO WP-7 = 4847  
 DIST. FROM WP-7 TO WP-8 = 5044  
 DIST. FROM WP-8 TO WP-9 = 5386  
 DIST. FROM WP-9 TO WP-10 = 3900

**ABUTMENT A**

WP-1 STA. 2+074.273, 6804 LT  
 WP-2 STA. 2+074.244, 4074 LT  
 WP-3 STA. 2+071.896, 0  
 WP-4 STA. 2+069.061, 4813 RT  
 WP-5 STA. 2+058.087, 6986 RT

**ABUTMENT B**

WP-6 STA. 2+095.579, 7782 LT  
 WP-7 STA. 2+092.138, 4369 LT  
 WP-8 STA. 2+089.619, 0  
 WP-9 STA. 2+086.928, 4666 RT  
 WP-10 STA. 2+086.931, 8566 RT



**SURVEY BASELINE POINTS**

POINT DESCRIPTION	NORTHING	EASTING	ELEVATION
PT #3	4789.230	10010.566	366.126
PT #2	4869.023	9989.308	363.591
PT #100	4903.549	9970.087	359.984
PT #1	5000.000	10000.000	363.211

NOTE:  
 SURVEY NORTHING AND EASTING ARE BASED UPON THE LOCALIZED SURVEY OF THIS PROJECT, NOT THE VERMONT GRID SYSTEM.

**REVISIONS**

REVISED WINGWALL 2.

**STATE OF VERMONT**  
**AGENCY OF TRANSPORTATION**

Town Of RIPTON Bridge No. BRIDGE #17  
 Highway No. TH 18 Log Sta. Surv. Sta.  
 TH 18 OVER SOUTH BRANCH MIDDLEBURY RIVER  
 SURVEY LAYOUT, BRIDGE RAIL LAYOUT & TIE SHEET

Designed By W J GAYNOR Drawn By W J GAYNOR  
 Checked By B P GUZAS Date 8/09 Bridge Design Supervisor R L JOY Date 10/09

PROJECT RIPTON PROJECT NO. FH 010-1(2)  
 I.G.C. Info. Bridge Sheet No. Sheet 8 R of 26