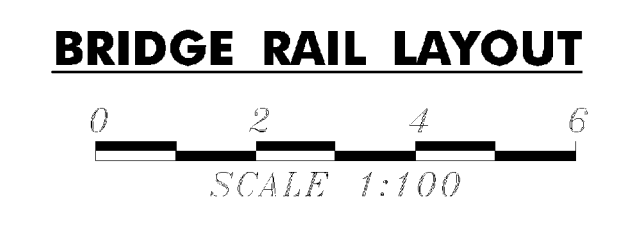
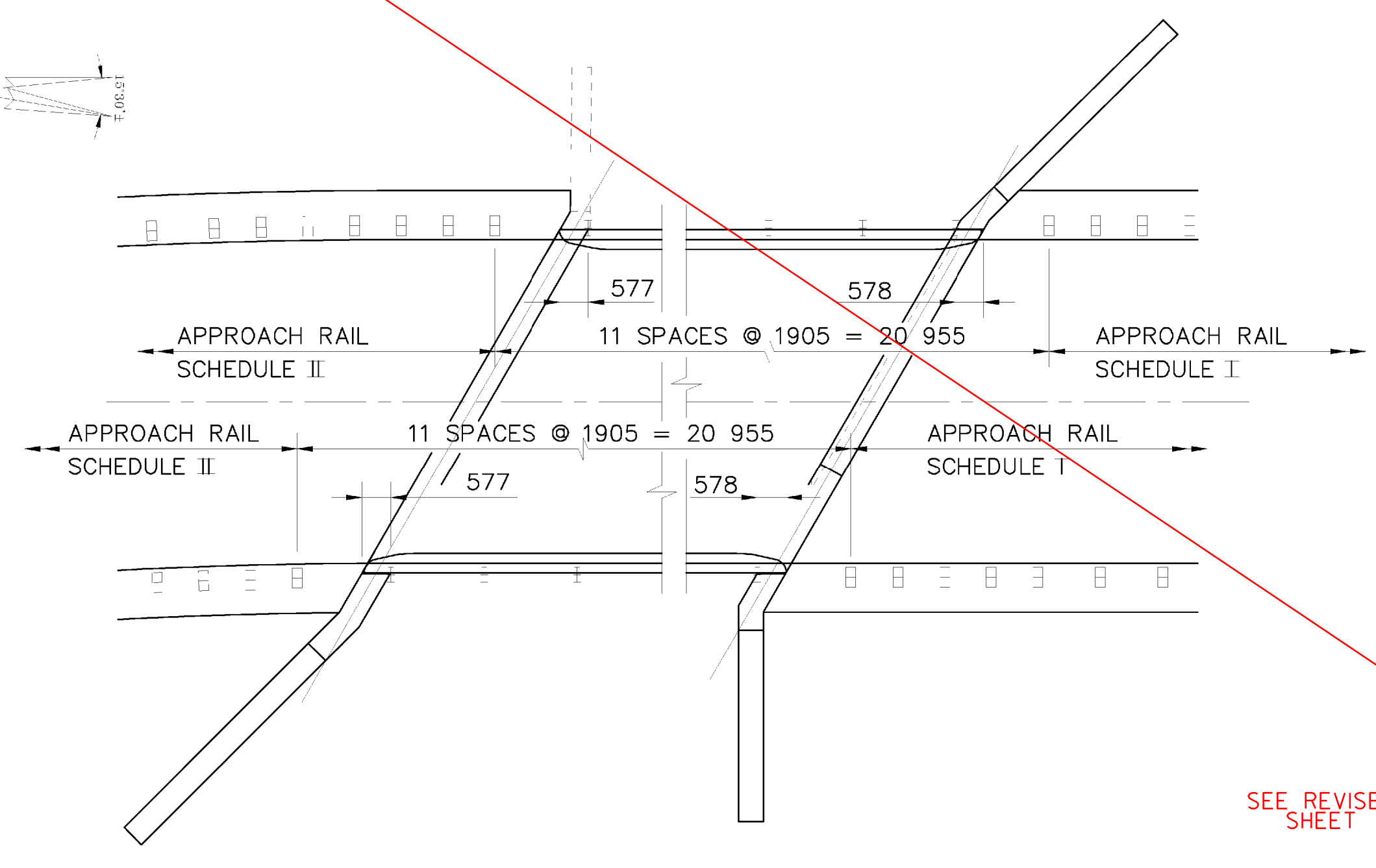
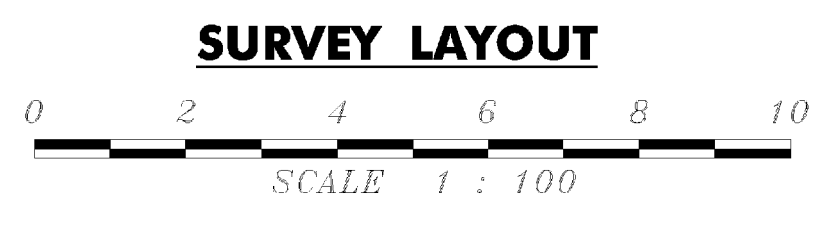
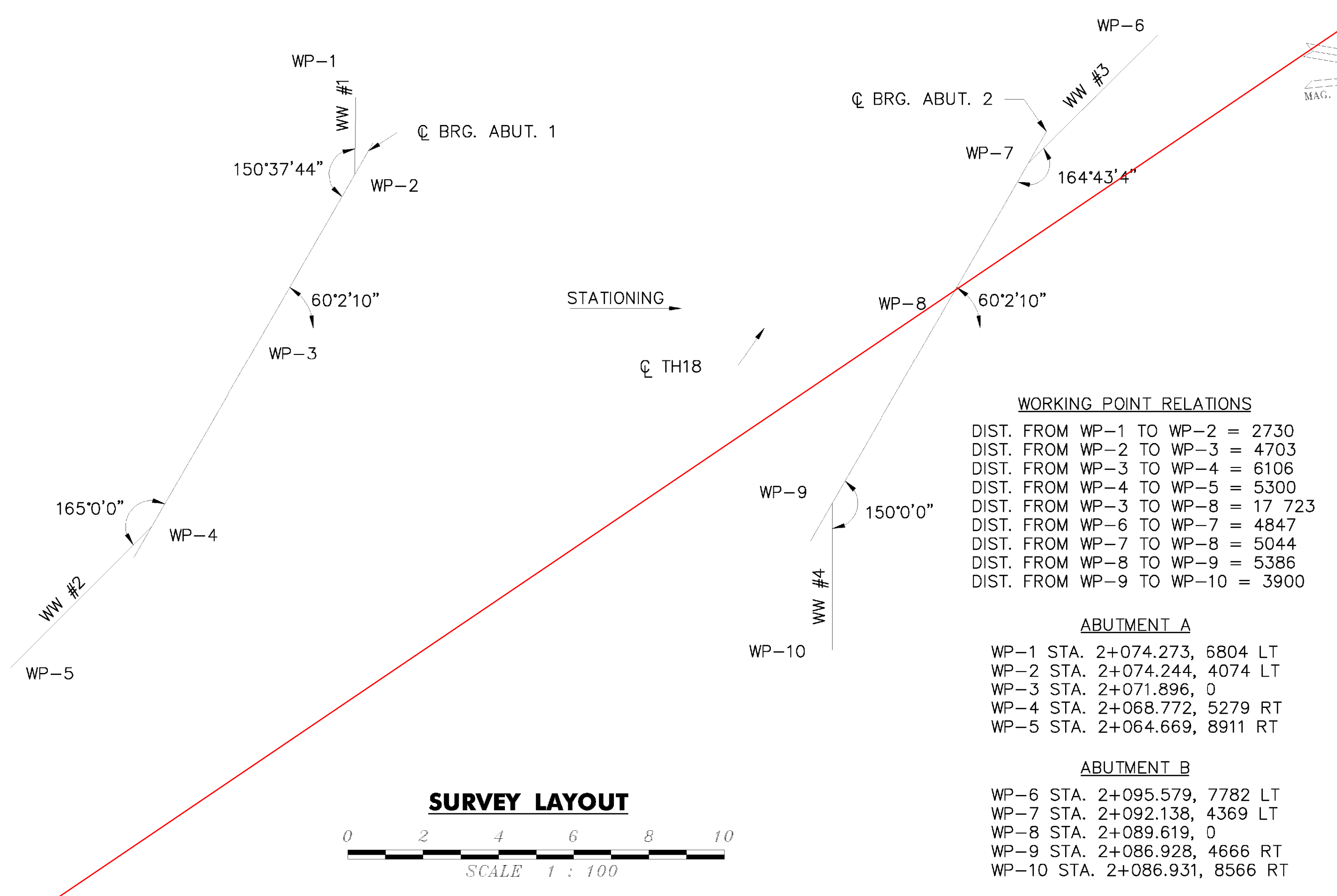


SWING TIES TO SURVEY BASELINE
NOT TO SCALE



SURVEY BASELINE POINTS			
POINT DESCRIPTION	NORTHING	EASTING	ELEVATION
PT #3	4789.230	10010.566	366.126
PT #2	4869.023	9989.308	363.591
PT #100	4903.549	9970.087	359.984
PT #1	5000.000	10000.000	363.211

NOTE:
SURVEY NORTHING AND EASTING ARE BASED UPON THE LOCALIZED SURVEY OF THIS PROJECT, NOT THE VERMONT GRID SYSTEM.

- WORKING POINT RELATIONS**
 DIST. FROM WP-1 TO WP-2 = 2730
 DIST. FROM WP-2 TO WP-3 = 4703
 DIST. FROM WP-3 TO WP-4 = 6106
 DIST. FROM WP-4 TO WP-5 = 5300
 DIST. FROM WP-3 TO WP-8 = 17 723
 DIST. FROM WP-6 TO WP-7 = 4847
 DIST. FROM WP-7 TO WP-8 = 5044
 DIST. FROM WP-8 TO WP-9 = 5386
 DIST. FROM WP-9 TO WP-10 = 3900
- ABUTMENT A**
 WP-1 STA. 2+074.273, 6804 LT
 WP-2 STA. 2+074.244, 4074 LT
 WP-3 STA. 2+071.896, 0
 WP-4 STA. 2+068.772, 5279 RT
 WP-5 STA. 2+064.669, 8911 RT
- ABUTMENT B**
 WP-6 STA. 2+095.579, 7782 LT
 WP-7 STA. 2+092.138, 4369 LT
 WP-8 STA. 2+089.619, 0
 WP-9 STA. 2+086.928, 4666 RT
 WP-10 STA. 2+086.931, 8566 RT

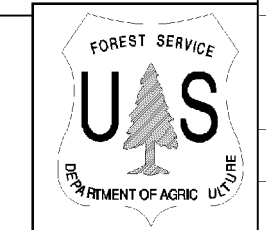
SEE REVISED SHEET

STATE OF VERMONT
AGENCY OF TRANSPORTATION

Town Of **RIPTON** Bridge No. **BRIDGE #17**
 Highway No. **TH 18** Log Sta. **Surv. Sta.**
TH 18 OVER SOUTH BRANCH MIDDLEBURY RIVER
SURVEY LAYOUT, BRIDGE RAIL LAYOUT & TIE SHEET

Designed By **W J GAYNOR** Drawn By **W J GAYNOR**
 Checked By **B P GUZAS** Date **8/09** Bridge Design Supervisor **R L JOY** Date **10/09**

PROJECT **RIPTON** PROJECT NO. **FH 010-1(2)**
 I.G.C. Info. **Bridge Sheet No.** Sheet **8** of **26**



M:\1734500_Ripton\1716-HWA\289E0397E_01.dgn