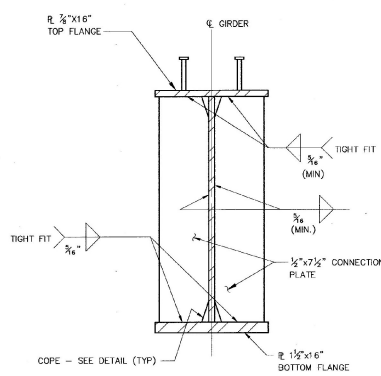
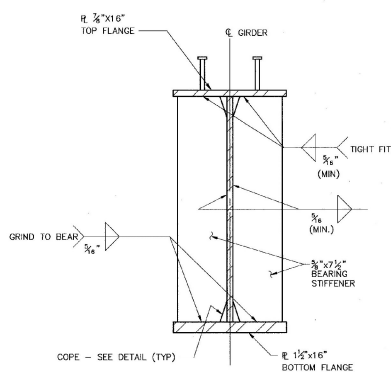


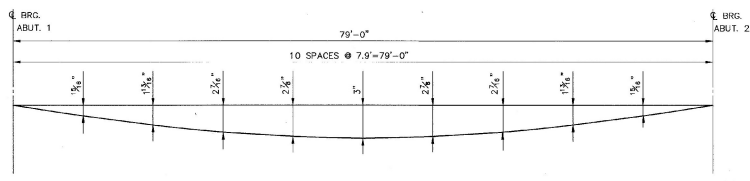
GIRDER ELEVATION
N.T.S.



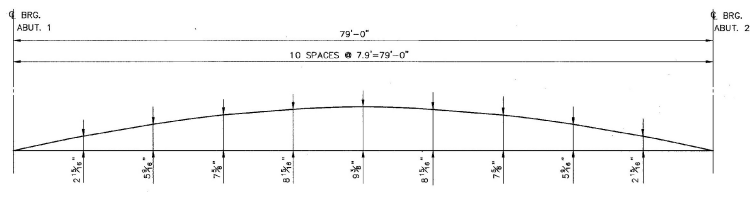
CONNECTION PLATES
SCALE: 1 1/2" = 1'-0"



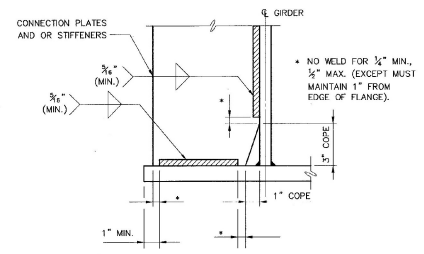
BEARING STIFFENERS
SCALE: 1 1/2" = 1'-0"



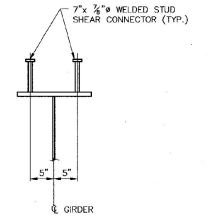
DEAD LOAD DEFLECTION DIAGRAM
N.T.S.



CAMBER DIAGRAM
N.T.S.



WELD TERMINATION AND COPING DETAIL
SCALE: 3" = 1'-0"



STUD DETAIL
N.T.S.

- NOTES:**
1. THE WEB AND BOTTOM FLANGE ARE TO BE CHARPY V-NOTCH (CWN) TESTED.
 2. EXACT FLANGE AND WEB CUTS TO BE RESPONSIBILITY OF THE FABRICATOR.
 3. GIRDER ENDS SHALL BE VERTICAL AFTER ALL DEAD LOADS ARE APPLIED.

BETTIGOLE ANDREWS & CLARK, INC.
Consulting Engineers

STATE OF VERMONT	
AGENCY OF TRANSPORTATION	
CITY OF BARRE	BRIDGE NO. B10
STREET NAME BLACKWELL STREET	LOG STA. SURV. STA.
BLACKWELL STREET BRIDGE OVER STEVENS BRANCH	
GIRDER ELEVATION	
DESIGNED BY V. DeAngelo	DRAWN BY S. Belanger
CHECKED BY J. Patusky	DATE 12/98
BRIDGE DESIGN SUPERVISOR	
J. Patusky	DATE 12/98
PROJECT BARRE CITY	PROJECT NO. BRM 6000(13)
B&C DRAWING NO. 9203BB88/64	DATE 12/98
BRIDGE SHEET NO. BR110	SHEET 23 OF 46