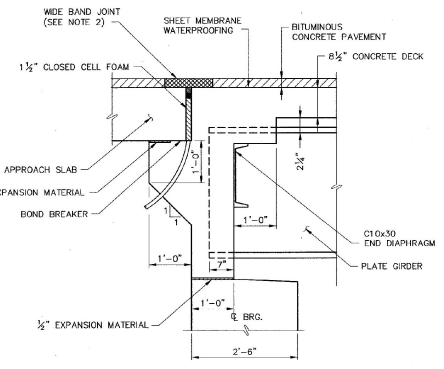
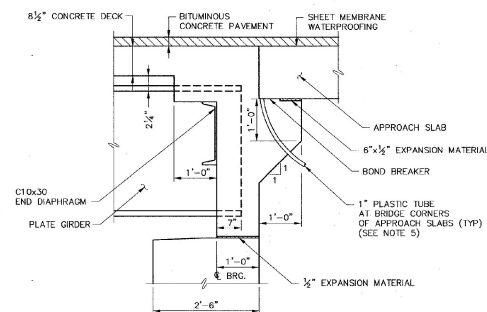


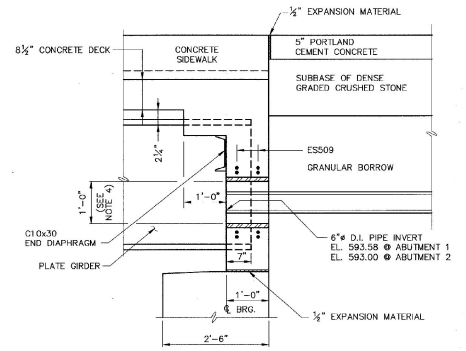
FAR FACE ELEVATION OF DECK END
 (ABUTMENT 2 SHOWN, ABUTMENT 1 SIMILAR)
 SCALE: 3/8" = 1'-0"



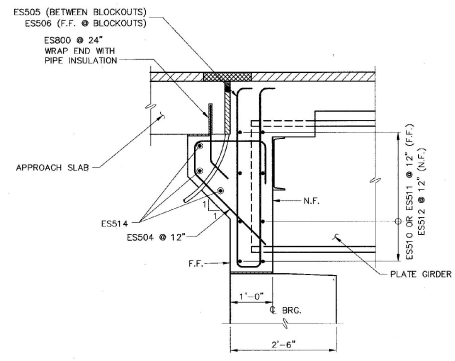
SECTION A-A MASONRY DETAIL



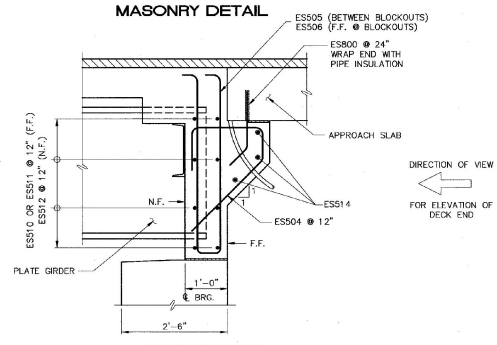
SECTION B-B MASONRY DETAIL



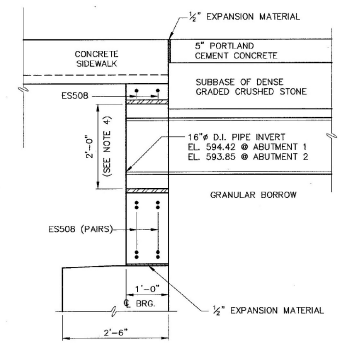
SECTION C-C



SECTION A-A REINFORCING DETAIL



SECTION B-B REINFORCING DETAIL



SECTION D-D

- NOTE**
1. ADJUST BAR SPACING OR CUT BAR AS REQUIRED TO FIT AT PIPE OPENING IN BACKWALL.
 2. WIDE BAND JOINT TO BE PAID FOR UNDER ITEM 516.10, BRIDGE EXPANSION JOINT (ASPHALTIC PLUG-TYPE).
 3. STEEL SLEEVES (CASINGS) SHALL HAVE A MINIMUM WALL THICKNESS OF 3/8"
 4. SPACER(S) BETWEEN PIPE AND CASING TO BE APPROVED BY THE ENGINEER. COST TO BE INCLUDED UNDER ITEM 625.10.
 5. FOR LOCATION OF PLASTIC TUBES, SEE PLAN, BRIDGE SHEET BR106.

ABUTMENT 1 BACKWALL DETAILS AT APPROACH SLABS
 SCALE: 3/8" = 1'-0"

ABUTMENT 2 BACKWALL DETAILS AT APPROACH SLABS
 SCALE: 3/8" = 1'-0"

BACKWALL DETAILS AT SIDEWALK
 SCALE: 3/8" = 1'-0"

- LEGEND**
- N.F. NEAR FACE
 - F.F. FAR FACE
 - E.F. EACH FACE
 - ▲ CUT TO FIT IN FIELD

BETTIGOLE ANDREWS & CLARK, INC.
 Consulting Engineers

STATE OF VERMONT	
AGENCY OF TRANSPORTATION	
CITY OF BARRE	BRIDGE NO. B-10
STREET NAME BLACKWELL STREET	LOG STA.
BLACKWELL STREET BRIDGE OVER STEVENS BRANCH	
DECK END DETAILS	
DESIGNED BY V. DeAngelo	DRAWN BY S. Belonger
CHECKED BY J. Patuskus	DATE 12/98
J. Patuskus	J. Patuskus
PROJECT	PROJECT NO.
BARRE CITY	BRM 6000(13)
B&C DRAWING NO. BLACK13	DATE 12/98
BRIDGE SHEET NO. BR107	SHEET 20 OF 46