

DECK PLAN

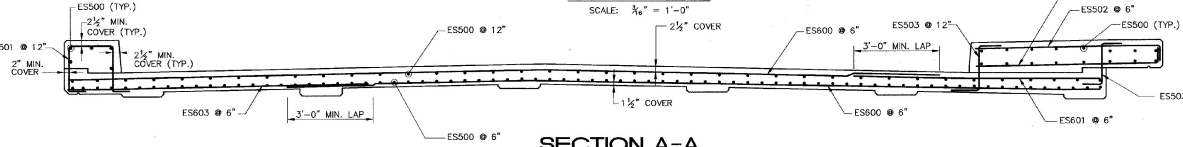
SCALE: 3/8" = 1'-0"

APPROACH SLAB ELEVATIONS

TOP OF APPROACH SLAB ELEVATIONS

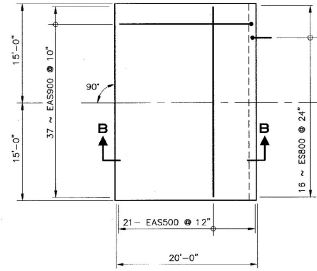
LOCATION	ABUT. 1	ABUT. 2
A	596.29	595.69
B	596.60	596.00
C	596.29	595.69
D	595.75	594.86
E	596.06	595.17
F	595.75	594.86

* APPROACH SLAB GRADES COULD CHANGE DEPENDING ON FINAL DECK GRADES.



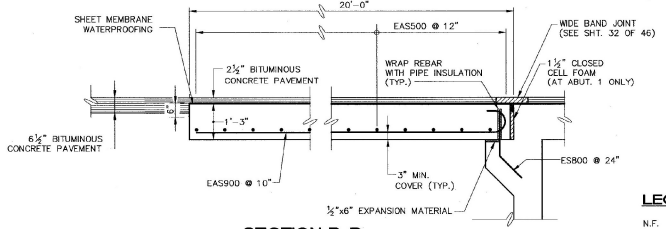
SECTION A-A

SCALE: 1/2" = 1'-0"



PLAN

SCALE: 3/8" = 1'-0"



SECTION B-B

SCALE: 1/2" = 1'-0"

NOTES:

- IF MORE THAN ONE CONCRETE DECK POUR IS REQUIRED BY THE CONTRACTOR, THERE SHALL BE A MINIMUM DELAY PERIOD OF 96 HOURS AFTER COMPLETION OF EACH POUR BEFORE BEGINNING ANOTHER POUR. EACH CONCRETE DECK POUR SHALL BE PLACED CONTINUOUSLY WITHIN ONE EIGHT HOUR WORKING DAY.
- THE DECK CONCRETE SHALL BE RETARDED SUFFICIENTLY TO REMAIN FLUID UNTIL EACH POUR IS COMPLETE. THE QUANTITY OF RETARDANT SHALL BE APPROVED BY THE CONCRETE ENGINEER PRIOR TO PLACEMENT. ANY DEVIATIONS FROM THIS PROCEDURE MUST BE APPROVED BY THE STRUCTURES ENGINEER IN WRITING BEFORE THE POUR BEGINS.
- TIP HOOK END OF BAR AS REQUIRED TO ACHIEVE MINIMUM COVER.
- FOR PLASTIC TUBE DETAILS, SEE BRIDGE SHEET BR107.
- FOR TRANSVERSE DECK SECTION, SEE BRIDGE SHEET BR105.
- BAR IN PAIRS BELOW 24" PIPE SLEEVE IN BACKWALL. SEE BRIDGE SHEET BR107.

LEGEND

- N.F. NEAR FACE
- F.F. FAR FACE
- E.F. EACH FACE
- ▲ CUT TO FIT IN FIELD

BETTIGOLE ANDREWS & CLARK, INC.
Consulting Engineers

**STATE OF VERMONT
AGENCY OF TRANSPORTATION**

CITY OF	BARRE	BRIDGE NO.	B-10
STREET NAME	BLACKWELL STREET	LOC. STA.	
BLACKWELL STREET BRIDGE OVER STEVENS BRANCH			
DECK PLAN			
DESIGNED BY	V. DeAngelo	DRAWN BY	S. Belanger
CHECKED BY	J. Patusky	DATE	12/98
BRIDGE DESIGN SUPERVISOR		DATE	
J. Patusky		12/98	
PROJECT NO.		PROJECT NO.	
BARRE CITY		BRM 6000(13)	
B&C DRAWING NO.	9203BB90	DATE	12/98
BRIDGE SHEET NO.	BR106	SHEET	19 OF 46