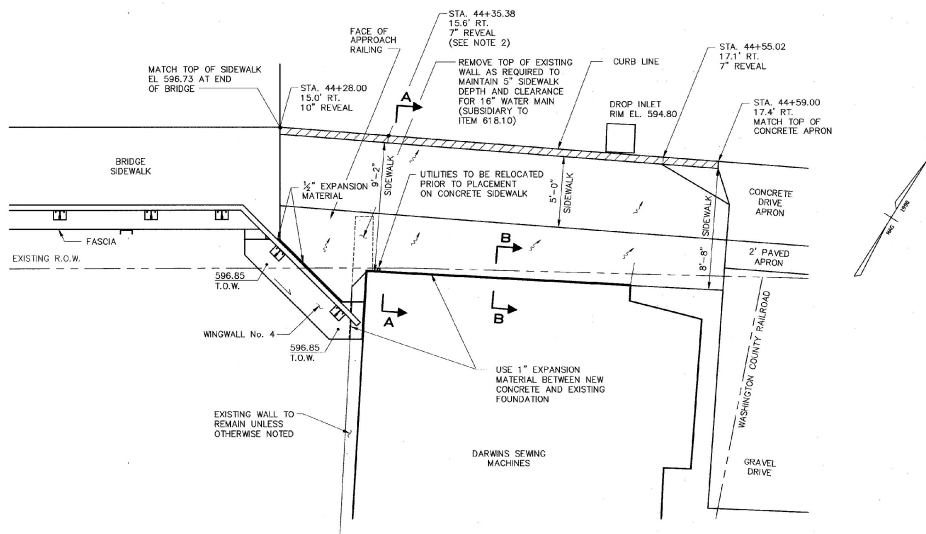


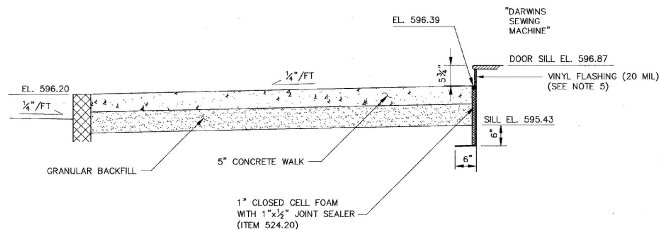
NORTHEAST CORNER RECONSTRUCTION PLAN

SCALE: 1/4" = 1'-0"



SOUTHEAST CORNER RECONSTRUCTION PLAN

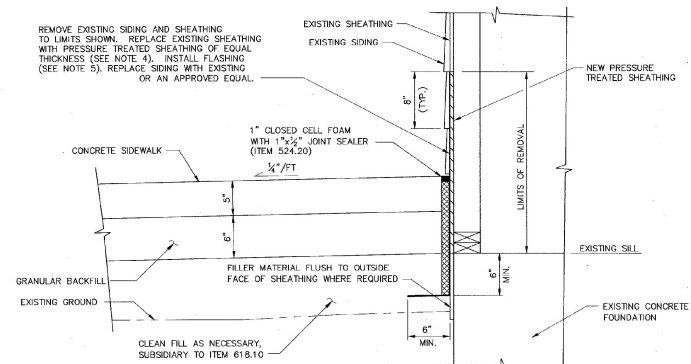
SCALE: 1/4" = 1'-0"



SECTION A-A

(AT STA. 444-35.38)

SCALE: 1/2" = 1'-0"



SECTION B-B

SCALE: 1/2" = 1'-0"

NOTES

- FOR RETAINING WALL DETAILS, SEE SHEET 12 OF 46.
- SLOPE CURB REVEAL FROM 10" AT BRIDGE END TO 7" WHERE INDICATED ON PLANS.
- THE CONTRACTOR SHALL TAKE PRECAUTIONS WHEN DRIVING GUARD RAIL POSTS SO AS NOT TO DAMAGE THE RETAINING WALL FOOTING BELOW. SEE SHEET 12 OF 46.
- THE COST OF REMOVING AND REPLACING HOUSE SIDING AND FURNISHING AND INSTALLING FLASHING TO BE SUBSIDIARY TO ITEM 618.10, PORTLAND CEMENT CONCRETE SIDEWALK 5'.
- FLASHING SHALL BE INSTALLED TO THE TOP OF THE FIRST FULL CLAPBOARD ABOVE THE CONCRETE AS A MINIMUM HEIGHT.

LEGEND

- T.O.W. TOP OF CONCRETE WALL
- T.O.S.W. TOP OF CONCRETE SIDEWALK
- SLOPE TO DRAIN
- 596.80 PROPOSED SPOT ELEVATION
- PROPOSED GRANITE CURB
- PORTLAND CEMENT CONCRETE

**STATE OF VERMONT
AGENCY OF TRANSPORTATION**

CITY OF	BARRE	BRIDGE NO.	B10
STREET NAME	BLACKWELL STREET	LOG STA.	SURV. STA.
BLACKWELL STREET BRIDGE OVER STEVENS BRANCH			
EAST END RECONSTRUCTION			
DESIGNED BY	V. DeAngelo	DRAWN BY	S. Belonger
CHECKED BY	D. Kidder	DATE	12/95
BRIDGE DESIGN SUPERVISOR		DATE 12/98	
PROJECT		PROJECT NO.	
BARRE CITY		BRM 6000(13)	
BAC DRAWING NO.	BLACK17/48	DATE	12/98
BRIDGE SHEET NO.		SHEET	11 OF 46

BETTIGOLE ANDREWS & CLARK, INC.
Consulting Engineers