

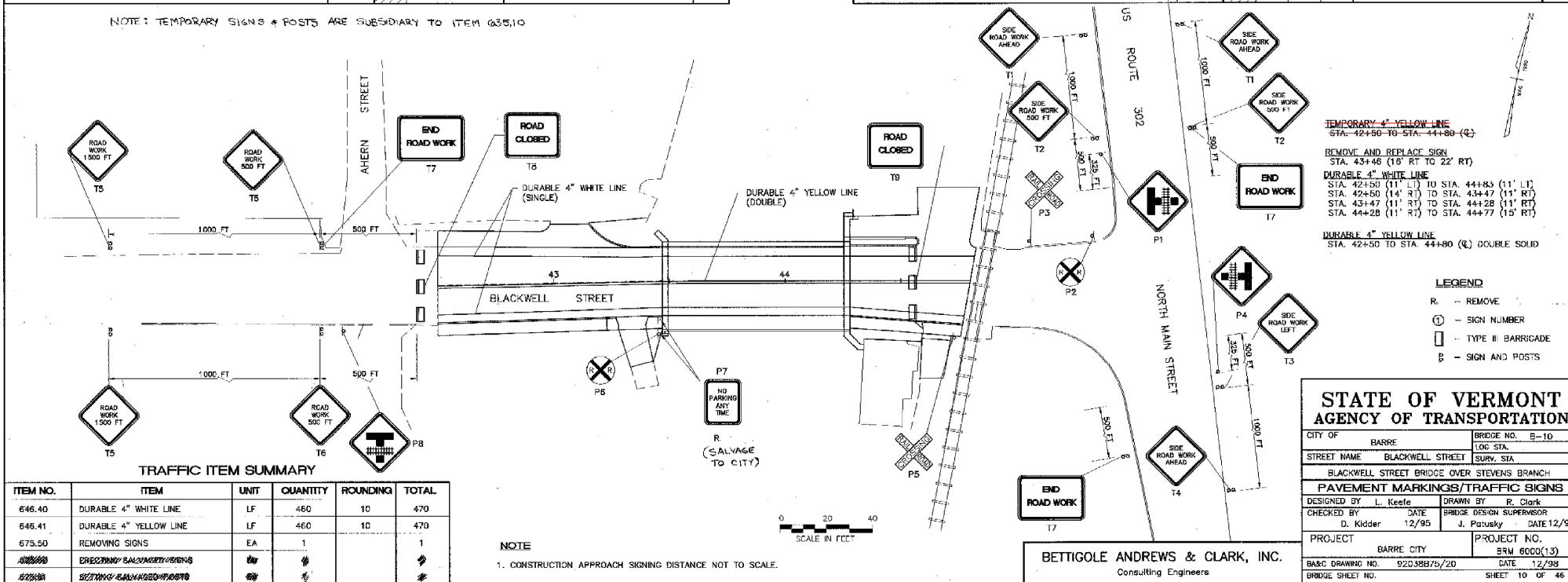
## TEMPORARY TRAFFIC SIGN SUMMARY SHEET

SIGN NUMBER	SIGN LEGEND	NEW SIGNS		NEW SIGN POSTS			REMARKS	STD. SHEET NUMBER
		SIGN DIMENSIONS	"A"	NUMBER OF POSTS	FLANGED CHANNEL LB./FT.	TUBULAR ALUMINUM 30°/1		
T1	SIDE ROAD WORK AHEAD	48"x48"	16	2	X			E-100A
T2	SIDE ROAD WORK 500 FT	48"x48"	16	2	X			E-121
T3	SIDE ROAD WORK AHEAD	48"x48"	16	2	X			E-160
T4	SIDE ROAD WORK 500 FT	48"x48"	16	2	X			
T5	END ROAD WORK	48"x24"	8	1	X			
T6	SIDE ROAD WORK LEFT	48"x48"	16	2	X			
T7	SIDE ROAD WORK AHEAD	48"x48"	16	2	X			
T8	END ROAD WORK	48"x24"	8	1	X			
T9	ROAD CLOSED	48"x30"	10	1	X			
T10	ROAD CLOSED	48"x30"	10	1	X			
T11	ROAD WORK 500 FT	36"x36"	9	1	X			
T12	ROAD WORK AHEAD	36"x36"	9	1	X			
T13	ROAD WORK AHEAD	36"x36"	9	1	X			
T14	ROAD WORK 500 FT	36"x36"	9	1	X			
T15	END ROAD WORK	48"x24"	8	1	X			
FINAL POST LENGTHS ARE TO BE DETERMINED IN THE FIELD. POST SIZES ARE COMPUTED BASED ON INFORMATION FURNISHED ON THE STANDARD SHEETS AND THE DESIGN DIVISION'S "SIGN POST DESIGN MANUAL".			SF.					
TOTALS			176			788		

NOTE: TEMPORARY SIGNS & POSTS ARE SUBSIDIARY TO ITEM 035.10

## TRAFFIC SIGN SUMMARY SHEET

SIGN NUMBER	SIGN LEGEND	NEW SIGNS		NEW SIGN POSTS			REMARKS	STD. SHEET NUMBER
		SIGN DIMENSIONS	"A"	NUMBER OF POSTS	FLANGED CHANNEL LB./FT.	TUBULAR ALUMINUM 30°/1		
P1	W10-3	30"x30"	6.25				US 302 WEST	E 163
P2	RAILROAD CROSSING	36" DIAMETER	7				45+30 LT	E 190
P3	RAILROAD CROSSING	48"x9"	6				45+10 LT	
P4	W10-3	30"x30"	6.25				US 302 EAST	
P5	RAILROAD CROSSING	48"x9"	6				44+29 RT	
P6	RAILROAD CROSSING	36" DIAMETER	7				43+46 RT	
P7	R7-100 (NO PARKING ANY TIME)	12"x18"	1.5				43+46 RT	
P8	W10-3	30"x30"	6.25				42+40 RT	
FINAL POST LENGTHS ARE TO BE DETERMINED IN THE FIELD. POST SIZES ARE COMPUTED BASED ON INFORMATION FURNISHED ON THE STANDARD SHEETS AND THE DESIGN DIVISION'S "SIGN POST DESIGN MANUAL".			SF.					
TOTALS			46.25			112 LF	112 LF	



**BETTIGOLE ANDREWS & CLARK, INC.**  
Consulting Engineers