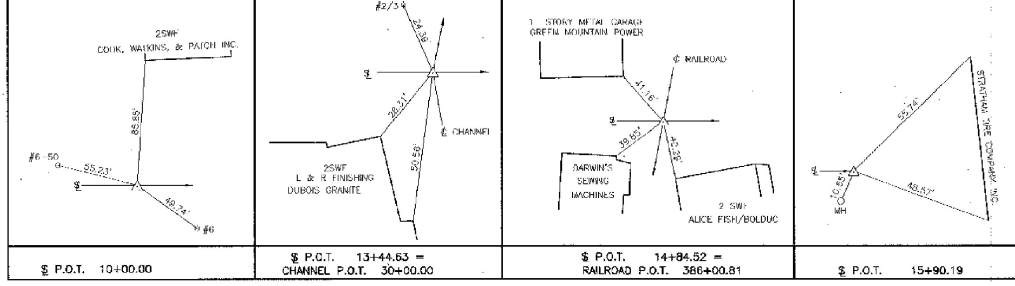


- REMOVING AND RESETTING FENCE**
STA. 43+20 TO STA. 43+45 LT
(SEE NOTE 3)
- REMOVING PIPE RAIL**
STA. 43+43 TO STA. 43+48 LT.
(SEE NOTE 3)
- CAST-IN-PLACE CONCRETE RETAINING WALL**
STA. 44+28 TO STA. 44+52 LT. 18.04'
- 6" UNDERDRAIN 605.10**
44+28 ~ 44+52 LT
ALONG RETAINING WALL
OUTLET TO D# 27 LF
- VERTICAL GRANITE CURB**
69 STA. 42+50 TO STA. 43+27 RT 36
40 STA. 43+42 TO STA. 43+47 RT
STA. 43+15 TO STA. 43+36 LT (R=25')
27 STA. 43+36 TO STA. 43+47 LT
STA. 44+28 TO STA. 44+60 RT 58
STA. 44+28 TO STA. 44+96 LT 19' 57"
5 STA. 44+56 LT 15' TO STA. 44+66 LT 19'
STA. 44+28 TO STA. 44+56 LT 19' (R=2') 57"
- CHANGING ELEV. OF MANHOLE**
STA. 42+65 RT
STA. 42+67 LT
STA. 44+60 RT
- ALUMINUM APPROACH RAILING**
INSTALL STANDARD END CAPS
WHERE APPROPRIATE
STA. 43+17 TO STA. 43+48 LT
STA. 43+42 TO STA. 43+48 RT
STA. 44+28 TO STA. 44+57 LT
- CONSTRUCT CONCRETE WALK**
STA. 43+09 TO STA. 43+14 RT.
- CONSTRUCT DRIVE**
STA. 43+10 LT - 17' PAVED
STA. 43+35 RT - 11' GRAVEL (SKEWED)
STA. 44+67 LT - 22' PAVED
STA. 44+67 RT - 12' GRAVEL
- WOOD MARKER POST**
STA. 43+50 LT AT PIPE OUTLET
- PIPE REMOVAL**
STA. 43+17 TO 43+50 LT
PARTIAL REMOVAL OF PIPE DUE TO
TELEPHONE POLE PLACEMENT

- NOTES:**
1. CONSTRUCTION OF DRIVES ALONG RAILROAD TRACKS MUST MAINTAIN A MINIMUM CLEARANCE OF 8'-6" BETWEEN NEW CONSTRUCTION AND 9' OF RAILS.
 2. GRADE CROSS SLOPE OF DRIVE AT STA. 43+28 RT. TO DRAIN TOWARDS RIVER.
 3. REMOVING AND RESETTING CHAIN LINK FENCE (STA. 43+20 TO STA. 43+45 LT.) AND MOVING PIPE RAIL (STA. 43+43 TO STA. 43+48 LT.) SUBSIDIARY TO ITEM 204.20, TRENCH EXCAVATION.
 4. CONCRETE WALK AND CONCRETE ISLAND TO BE PAID FOR UNDER ITEM 616.10, PORTLAND CEMENT SIDEWALK.
 5. THE INTENT FOR THE DRAIN INLET AT STA. 43+17 LT. IS TO CONNECT THE EXISTING SYSTEM FROM THE MANHOLE AT STA. 42+92 LT. AND REMOVE THE EXISTING PIPE FROM STA. 43+17 LT. TO THE OUTLET. REMOVAL OF THIS PORTION OF PIPE SHALL BE SUBSIDIARY TO THE INSTALLATION OF THE NEW 24" PCCSP.
 6. UPON COMPLETION OF THE DRAINAGE SYSTEM INSTALLATION BETWEEN STATIONS 43+00 AND 43+50 THE CONTRACTOR SHALL CLEAN CULVERT IN PLACE (ITEM 601.995) FROM MANHOLE AT STA. 42+92 LT. 19' TO SYSTEM OUTLET AT STA. 43+50 LT. 26'.
 7. TWO INCH THICK RIGID INSULATION SHALL BE PLACED OVER AND DOWN THE SIDES OF BOTH THE 8" AND 10" DIAMETER WATERLINES AT ALL LOCATIONS WHERE THESE PIPES HAVE LESS THAN 6 FEET OF COVER (ITEM 622.10).
 8. THE COST OF REMOVING AND DISPOSING OF THE EXISTING GAS MAIN AND ALL APPURTENANCES SHALL BE SUBSIDIARY TO ITEM 529.15, REMOVAL OF STRUCTURE.



STATE OF VERMONT	
AGENCY OF TRANSPORTATION	
CITY OF BARRE	BRIDGE NO. 3-10
STREET NAME BLACKWELL STREET	LDG. STA. 30+00.00
BLACKWELL STREET BRIDGE OVER STEVENS BRANCH	
PLAN	
DESIGNED BY S. Bekler	DRAWN BY S. Belanger
CHECKED BY D. Kidder	DATE 12/93
PROJECT BARRE CITY	
PROJECT NO. BRM 6000(13)	
B&C DRAWING NO. S203882/20	
DATE 12/98	
BRIDGE SHEET NO. SHEET 8 OF 46	

BETTIGOLE ANDREWS & CLARK, INC.
Consulting Engineers

