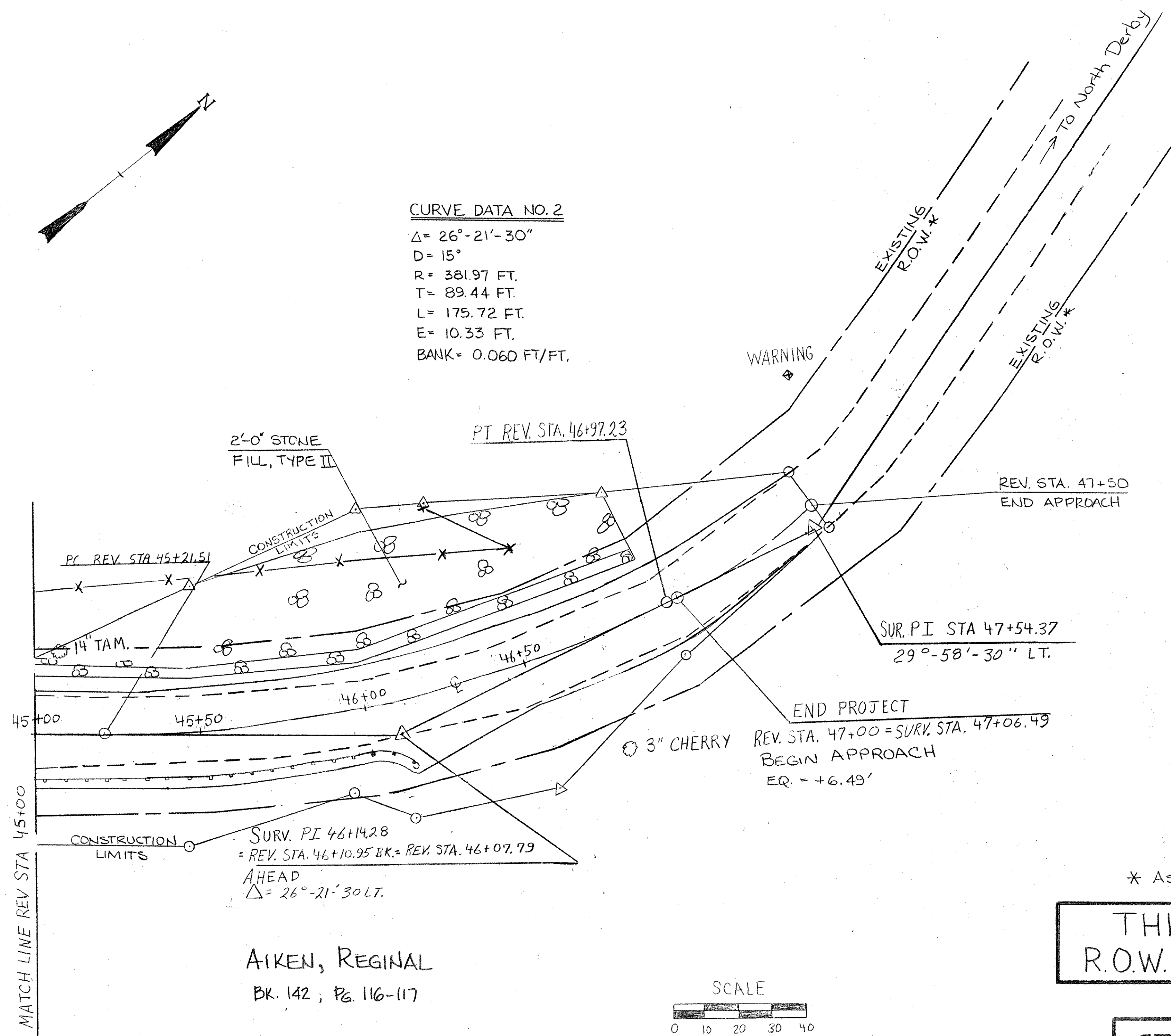


CURVE DATA NO. 2

$\Delta = 26^\circ - 21' - 30''$
 $D = 15^\circ$
 $R = 381.97 \text{ FT.}$
 $T = 89.44 \text{ FT.}$
 $L = 175.72 \text{ FT.}$
 $E = 10.33 \text{ FT.}$
 $\text{BANK} = 0.060 \text{ FT./FT.}$



2'-0" STONE FILL, TYPE II

PT REV. STA. 46+97.23

REV. STA. 47+50
END APPROACH

PC REV. STA 45+21.51

SUR. P.I. STA 47+54.37
29°-58'-30" LT.

MATCH LINE REV STA 45+00

END PROJECT

REV. STA. 47+00 = SURV. STA. 47+06.49
BEGIN APPROACH
EQ. = +6.49'

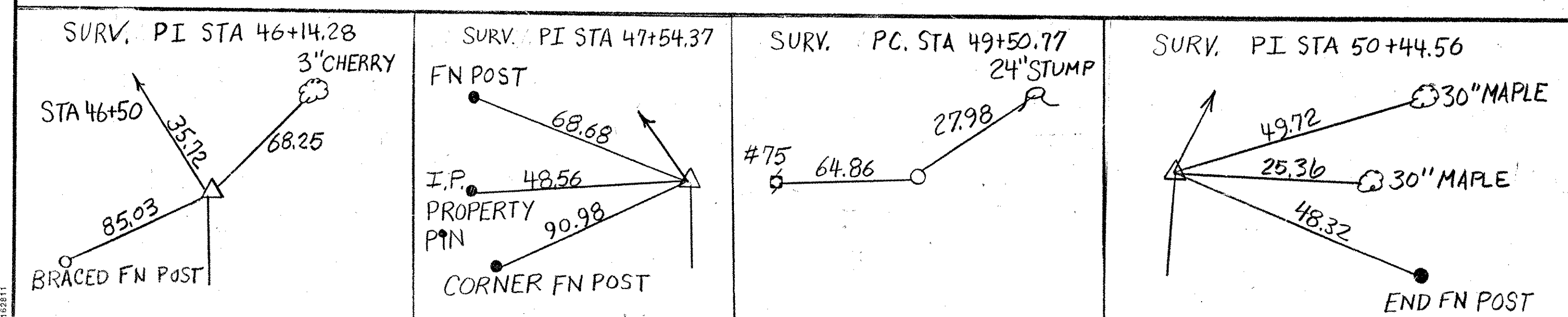
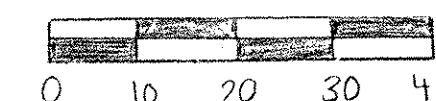
SURV. P.I. 46+14.28
= REV. STA. 46+10.95 BK. = REV. STA. 46+07.79
AHEAD
 $\Delta = 26^\circ - 21' - 30'' \text{ LT.}$

* ASSUMED EXISTING 3 ROD R.O.W.

THIS SHEET FOR R.O.W. PURPOSES ONLY

AIKEN, REGINAL
BK. 142 ; Pg. 116-117

SCALE



STATE OF VERMONT AGENCY OF TRANSPORTATION	
Town Of DERBY	Bridge No. B13
Highway No. TH6	Log Sta. Surv. Sta.
TH6, BR13 OVER UNNAMED BROOK	
PLAN VIEW	
Designed By B. DONALD	Drawn By S. FUGERE
Checked By M. EVANS-MONGEON Date 10/92	Bridge Design Supervisor J. WEAVER Date 10/92
PROJECT DERBY	PROJECT NO. TH 2 8910
I.G.C. Info.	
Bridge Sheet No.	Sheet 9 of 29