

REMOVING AND RESETTING FENCE  
 REV. 38+92 RT. ~ REV. 39+82 RT.  
 REV. 42+45 RT. ~ REV. 44+48 RT.  
 REV. 41+86 LT. ~ REV. 44+18 LT.  
 REV. 46+00 LT. ~ REV. 46+56 LT.

STEEL BEAM GUARD RAIL  
 REV. 38+88 LT. ~ REV. 44+09 LT.  
 REV. 41+87 RT. ~ REV. 46+12 RT.

ROBERTS REAL ESTATE  
 Bk. 142; Pg. 254-255  
 SEE SPECIAL PROVISIONS FOR  
 R.O.W. AGREEMENT.

LUCAS, LEONA

REFER TO RELEASE FORM  
 DATED 9 JULY, 1994 AND SPECIAL  
 PROVISIONS FOR R.O.W. AGREEMENTS

REV. PI REV. STA 41+39.61 BK =  
 REV. STA 41+23.45 AHEAD

REV. STA. 42+00  
 BEGIN BRIDGE PARTICIPATION

SURV. PI STA. 42+24.77  
 $\Delta = 20^\circ - 35' - 00''$  RT.

SUR. PI 40+46.20  
 $\Delta = 21^\circ - 38' - 30''$  RT.

REV. STA. 42+92  
 NEW 84' CAAPP  
 $\Delta = 90^\circ$  RT  
 FB = 761.46

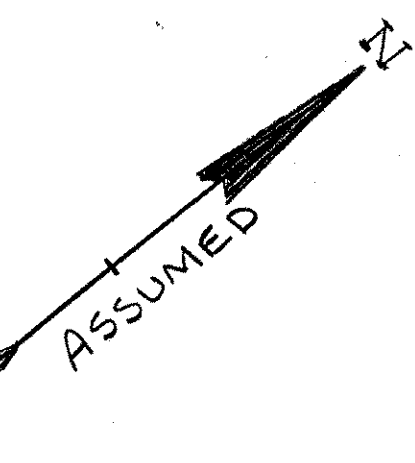
CURVE #1 DATA  
 $\Delta = 42^\circ - 13' - 30''$   
 $D = 12^\circ - 30' - 00''$   
 $R = 458.37'$   
 $T = 176.98'$   
 $L = 337.80'$   
 $E = 32.93'$   
 BANK = 0.055 FT/FT

BOLLES, RUSSELL  
 Bk. 142; Pg. 81-82

EXISTING 12" CGMP x 38' @ 90°  
 REPLACE W/ NEW 18" CSP x 62'

CHANNEL LINE STA. 498+75

REV. STA. 44+00  
 END BRIDGE PARTICIPATION



WARNING  
 (REMOVE)

POT REV. STA. 43+46.67 =  
 SUR. STA. 43+50 =  
 CHAN. LINE STA. 500+00  
 $\Delta = 50^\circ$  RT.

APPROXIMATE RELOCATION  
 OF UNDERGROUND  
 TELEPHONE LINE

2'-0" STONE  
 FILL, TYPE II

EXISTING  
 R.O.W. \*

TO N. DERBY 45+00

EXISTING  
 R.O.W. \*

CONSTRUCTION  
 LIMITS

MATCH LINE REV STA 45+00

CHANNEL LINE STA. 501+50

PC SURV. STA. 39+62.63  
 REV. STA. 39+62.63  
 BEGIN PROJECT  
 STA. 39+00  
 END APPROACH

2'x5' STONE FILL  
 TYPE II ENERGY  
 DISSIPATER

CEDAR  
 BRUSH

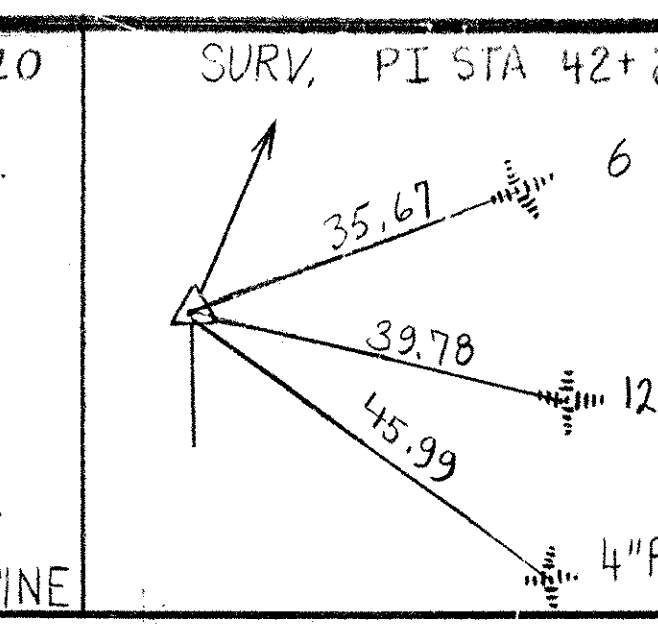
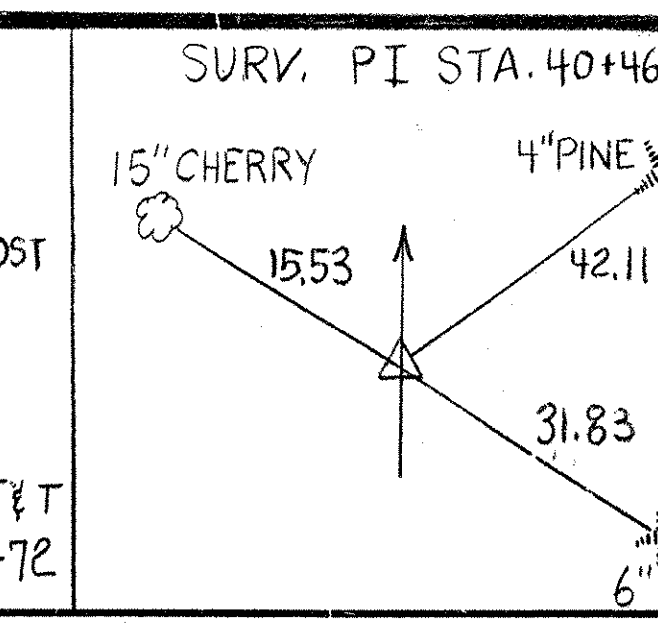
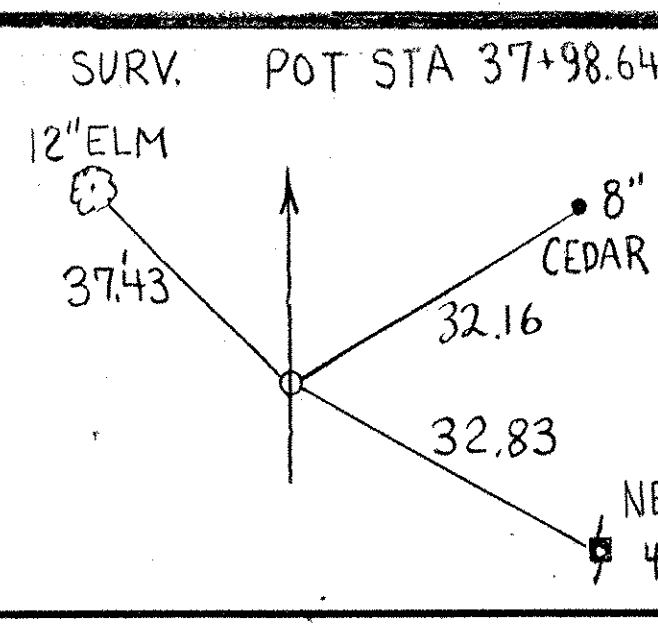
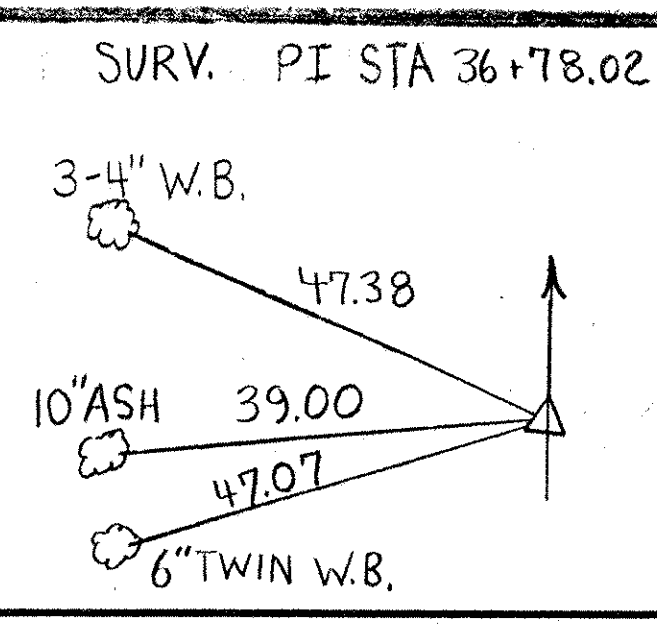
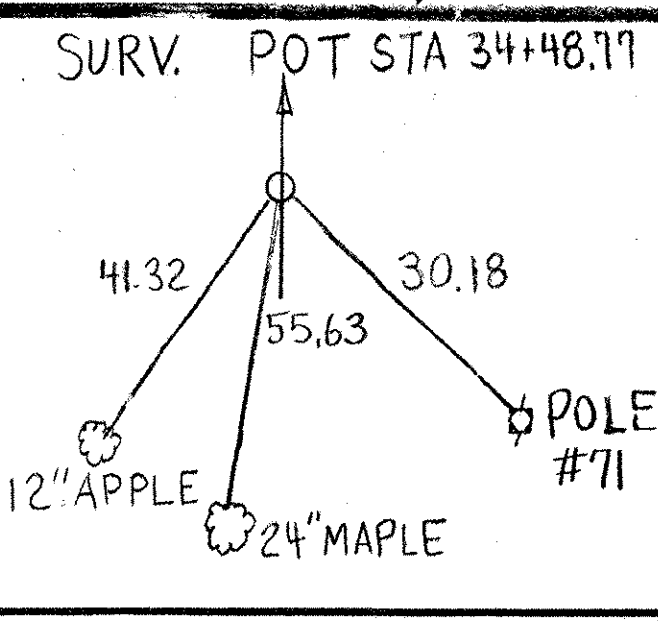
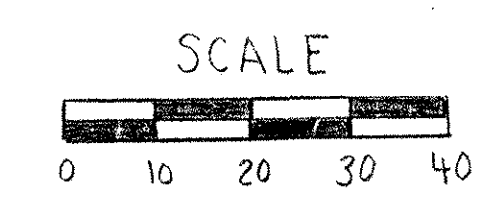
2'-0" STONE  
 FILL, TYPE II

CEDAR  
 WOODS

STA. 38+50  
 BEGIN APPROACH

THIS SHEET FOR  
 R.O.W. PURPOSES ONLY

\* ASSUMED EXISTING 3 ROD R.O.W.



PROJECT BENCHMARK LOCATION

STATION	OFFSET	ELEVATION**	DESCRIPTION
34+21	13' RT.	800.00	POLE # 71
44+00	0'	757.31	Q NAIL
51+75	15' RT.	812.94	POLE # 47/76

\*\* ASSUMED

**STATE OF VERMONT  
 AGENCY OF TRANSPORTATION**

Town Of <b>DERBY</b>	Bridge No. <b>B13</b>
Highway No. <b>TH 6</b>	Log Sta.
	Surv. Sta.
<b>TH6, B13 OVER UNNAMED BROOK</b>	
<b>PLAN VIEW</b>	
Designed By <b>B. DONALD</b>	Drawn By <b>S. FUGERE</b>
Checked By <b>M. EVANS-MONGEON</b>	Date <b>10/92</b>
	Bridge Design Supervisor <b>J. WEAVER</b> Date <b>10/92</b>
<b>PROJECT DERBY</b>	<b>PROJECT NO. TH2 8910</b>
I.G.C. Info.	
Bridge Sheet No.	Sheet <b>8</b> of <b>29</b>

BRUNING 44-232 73216  
 BR-6