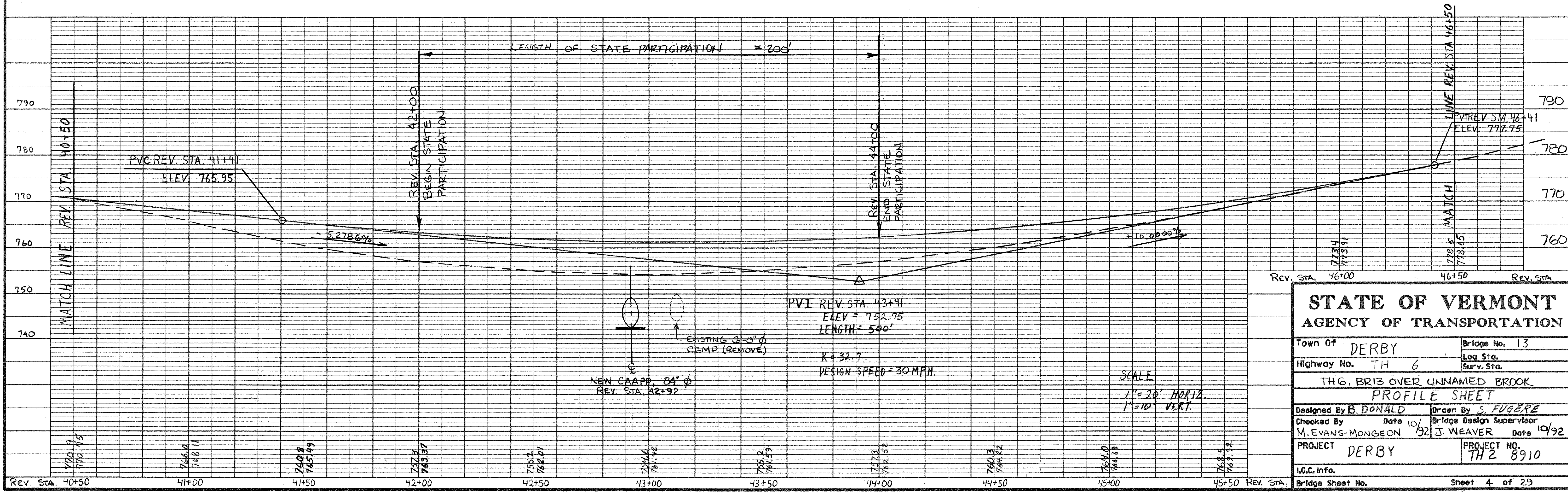


BRUNING 44-232 73216



STATE OF VERMONT	
AGENCY OF TRANSPORTATION	
Town Of DERBY	Bridge No. 13
Highway No. TH 6	Log Sta.
TH 6, BR13 OVER UNNAMED BROOK	
PROFILE SHEET	
Designed By B. DONALD	Drawn By S. FUGERE
Checked By M. EVANS-MONGEON	Bridge Design Supervisor J. WEAVER
Date 10/92	Date 10/92
PROJECT DERBY	PROJECT NO. TH 2 8910
I.G.C. info.	
Bridge Sheet No.	Sheet 4 of 29