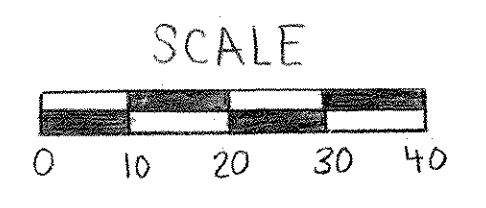
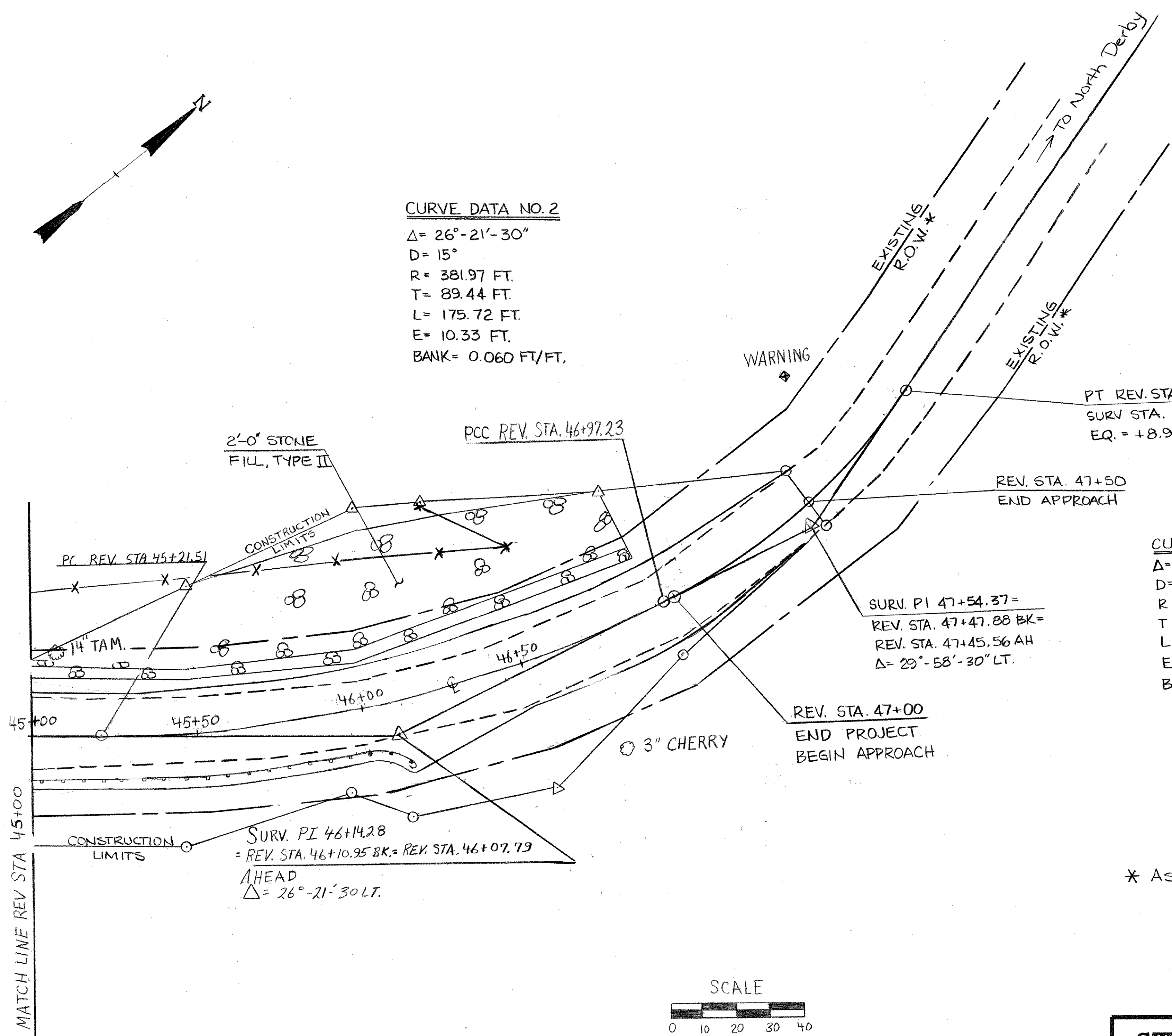
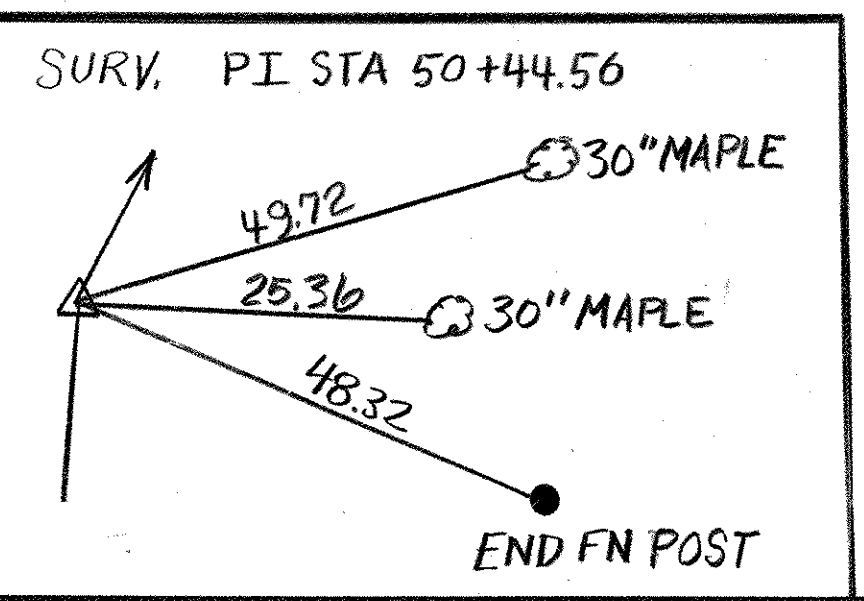
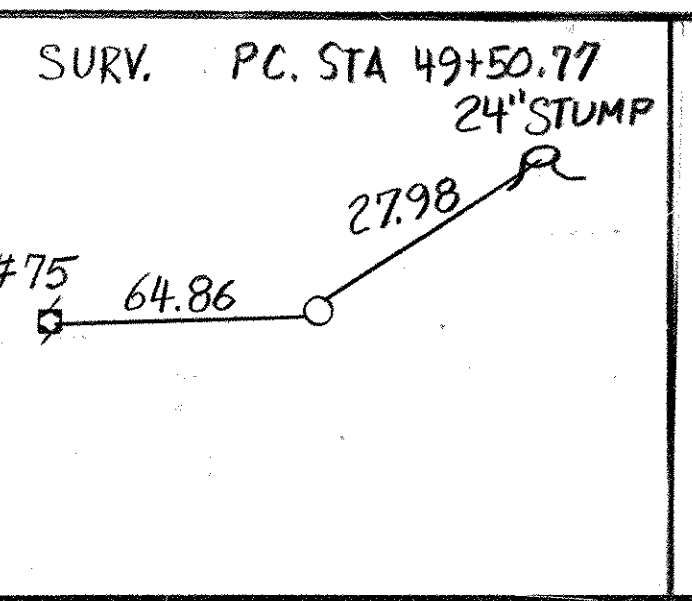
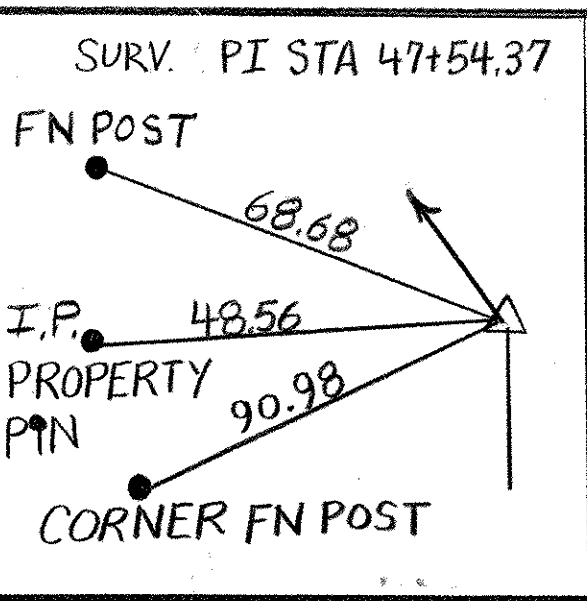
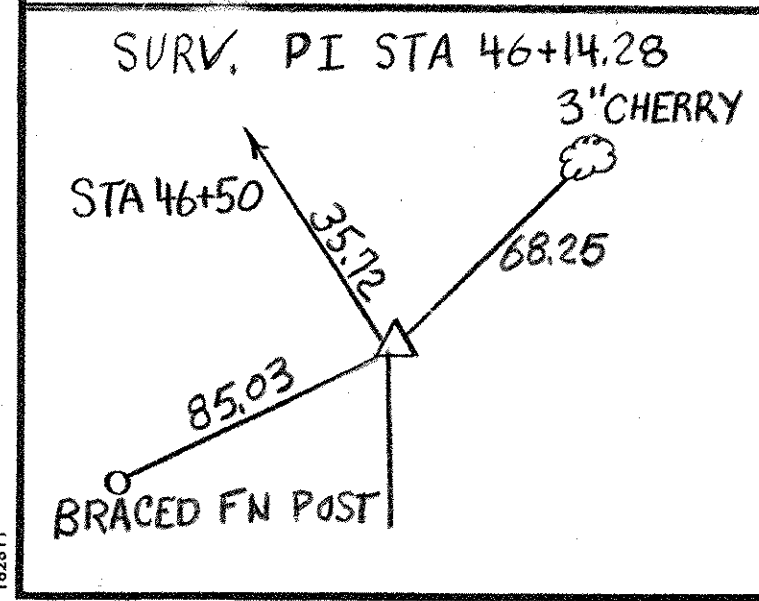


CURVE DATA NO. 2
 $\Delta = 26^\circ - 21' - 30''$
 $D = 15^\circ$
 $R = 381.97 \text{ FT.}$
 $T = 89.44 \text{ FT.}$
 $L = 175.72 \text{ FT.}$
 $E = 10.33 \text{ FT.}$
 $\text{BANK} = 0.060 \text{ FT/FT.}$

CURVE DATA NO. 3
 $\Delta = 29^\circ - 58' - 30''$
 $D = 30^\circ - 17' - 05''$
 $R = 189.19'$
 $T = 50.65'$
 $L = 98.98'$
 $E = 6.66'$
 $\text{BANK} = 0.060 \text{ FT/FT.}$



* ASSUMED EXISTING 3 ROD R.O.W.



STATE OF VERMONT	
AGENCY OF TRANSPORTATION	
Town Of DERBY	Bridge No. B13
Highway No. TH6	Log Sta. Surv. Sta.
TH6, B13 OVER UNNAMED BROOK	
PLAN VIEW	
Designed By B. DONALD	Drawn By S. FUGERE
Checked By M. EVANS-MONGEON Date 10/92	Bridge Design Supervisor J. WEAVER Date 10/92
PROJECT DERBY	PROJECT NO. TH 2 8910
L.C.C. Info.	
Bridge Sheet No.	Sheet 3 of 29