

INDEX OF SHEETS

- 1. TITLE SHEET
- 2-3. SURVEY LAYOUT SHEETS
- 4-5. PROFILE SHEETS
- 6-7. BRIDGE QUANTITY SHEETS
- 8-9. R.O.W. SHEETS
- 10. PIPE DETAIL SHEET
- 11. GENERAL NOTES
- 12. INLET HEADWALL DETAILS
- 13. OUTLET HEADWALL DETAILS
- 14. REINFORCING STEEL SCHEDULE
- 15-24. ROADWAY SECTIONS
- 25-29. CHANNEL SECTIONS

STANDARDS

B-17	03-10-95
E-100	08-09-95
E-101	08-08-95
E-102	08-08-95
E-102a	08-08-95
E-107	08-08-95
E-107a	08-08-95
G-1	06-01-94
G-1d	06-01-94
G-18	06-01-94
T-1	06-01-94
T-2	06-01-94

STATE OF VERMONT AGENCY OF TRANSPORTATION



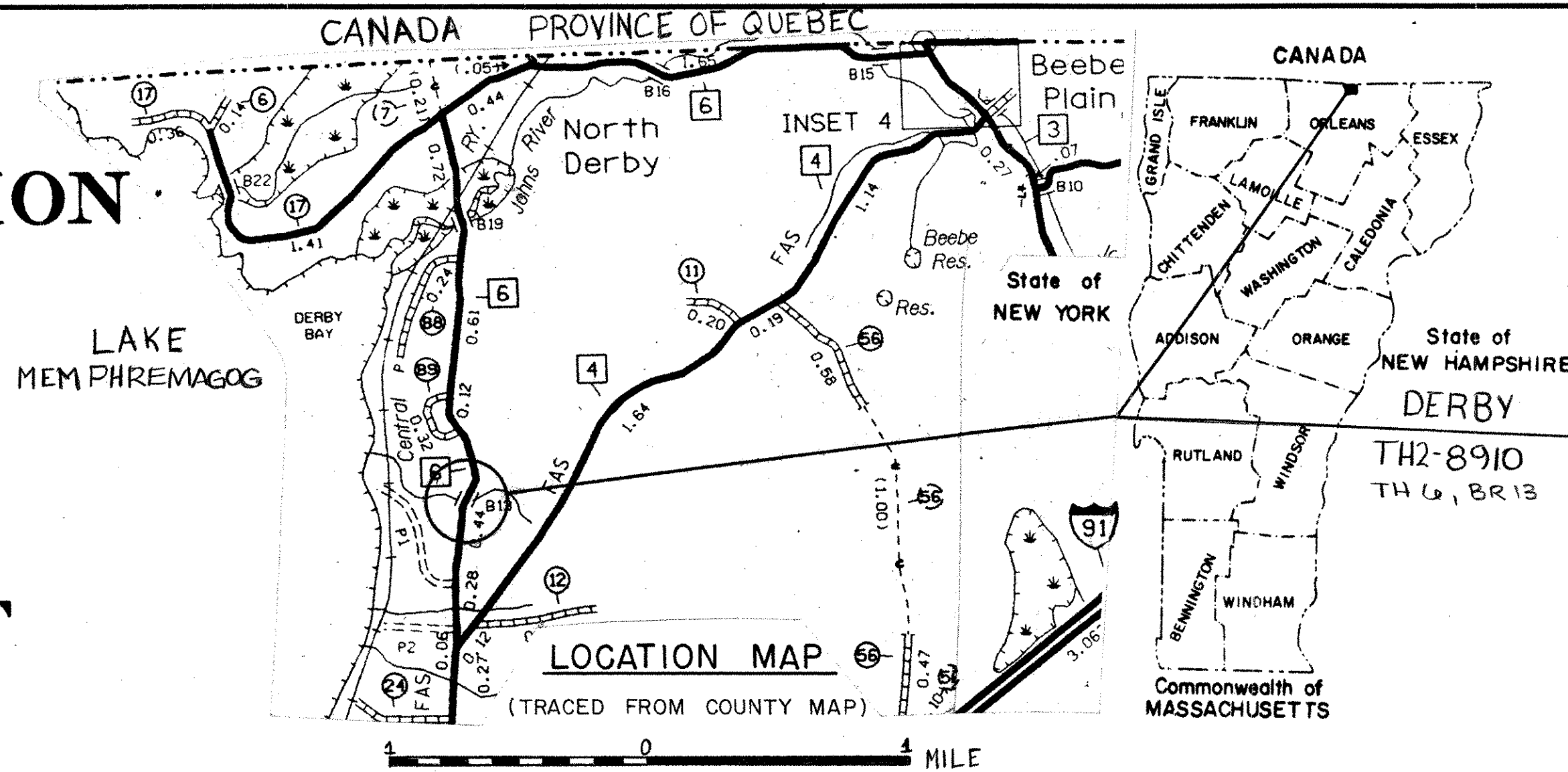
PROPOSED IMPROVEMENT BRIDGE PROJECT

TOWN OF DERBY
COUNTY OF ORLEANS

ROUTE NO: TH 6, CLASS 2 BRIDGE NO: BR 13

PROJECT LOCATION: BEGINNING AT A POINT ON TH 6, 0.60 MILES NORTH OF THE INTERSECTION WITH TH 4 AND EXTENDING NORTHERLY FOR 0.152 MILES.
PROJECT DESCRIPTION: REPLACE EXISTING PIPE WITH NEW 84"Ø x 82'-0" CAAPP, RECONSTRUCT ROADWAY APPROACHES AND CHANNEL.

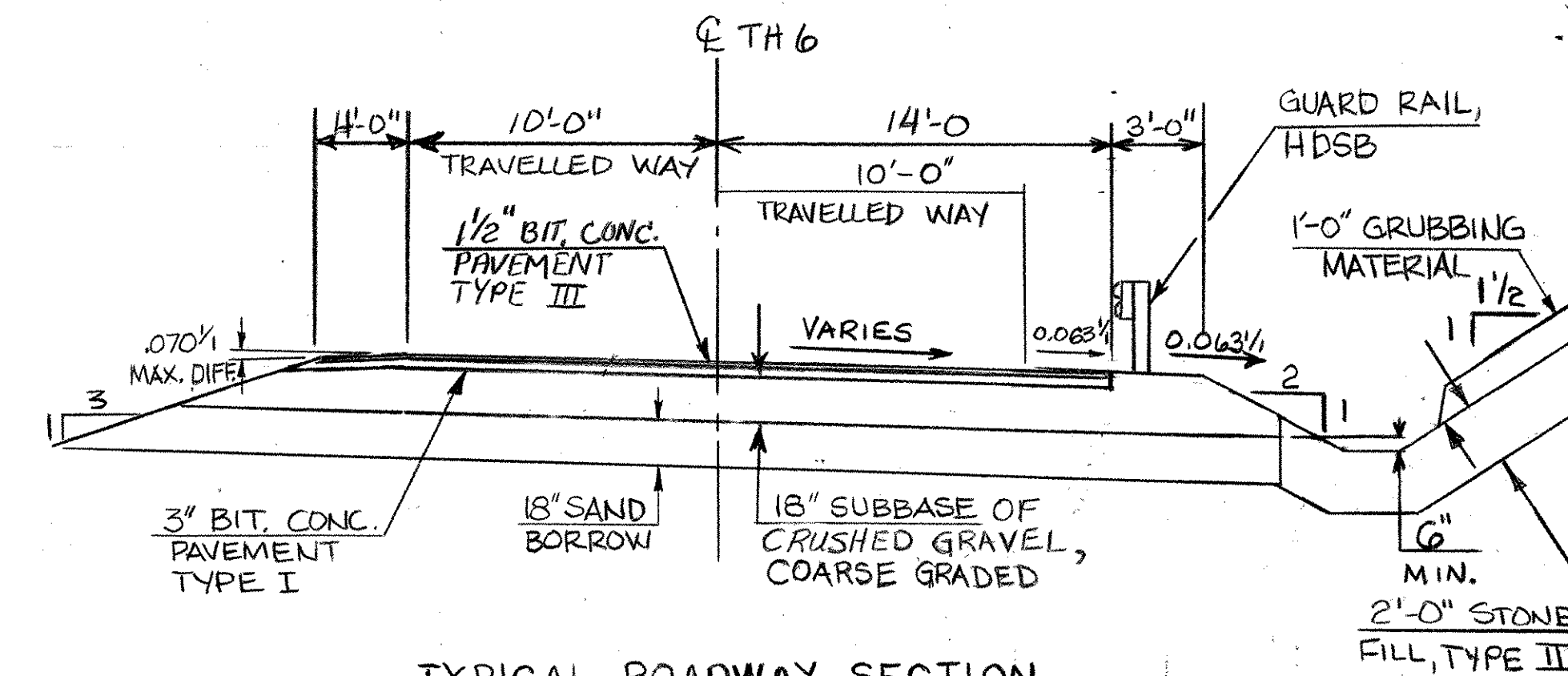
LENGTH OF PARTICIPATION ROADWAY: 200.00 FEET
LENGTH OF NON-PARTICIPATION ROADWAY: 600.00 FEET
LENGTH OF PROJECT: 800.00 FEET



GENERAL NOTES

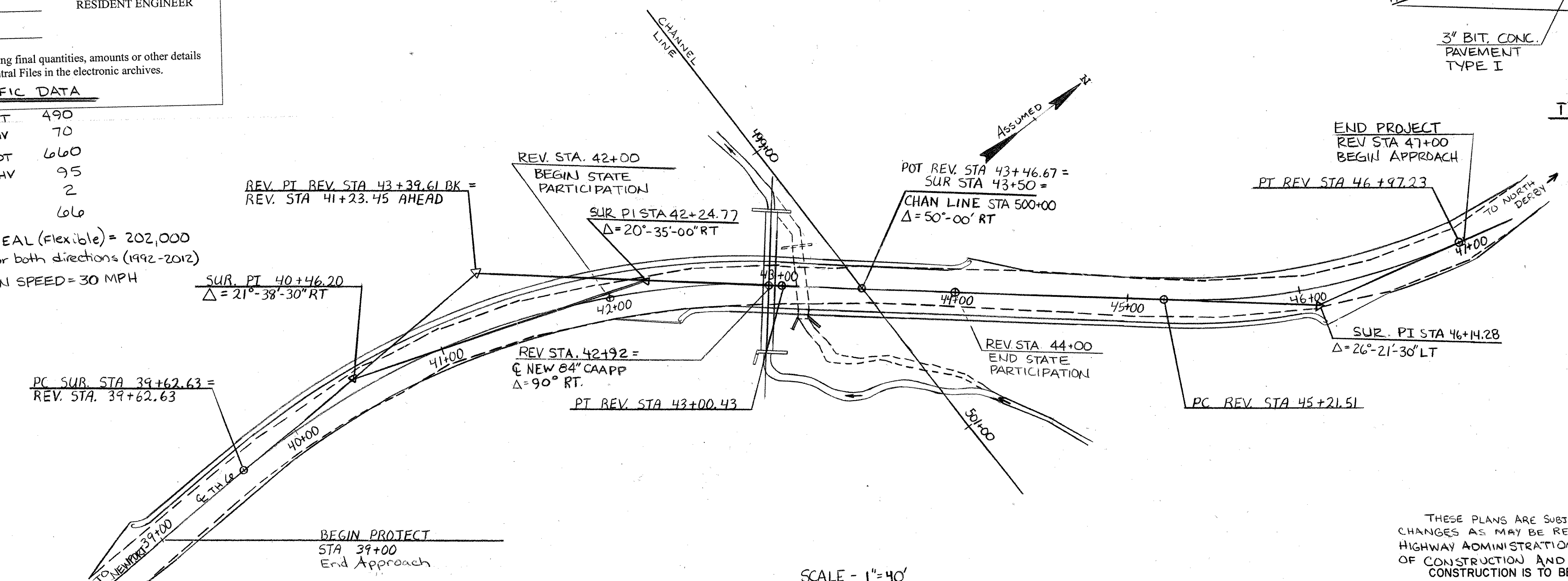
- 1. ONE-WAY TRAFFIC SHALL BE MAINTAINED FOR DURATION OF PROJECT.
- For ADDITIONAL GENERAL NOTES SEE SHEET 11 OF 29.

RECORD PLANS	
CONTRACTOR:	PROJECT COMPLETED BY TOWN 1992
RESIDENT ENGINEER:	
CONSTRUCTION BEGAN:	
CONSTRUCTION COMPLETE:	
RECORD PLANS BY:	
I HEREBY CERTIFY THAT ALL THE CONSTRUCTION REQUIRED BY THIS SET OF DRAWINGS HAS BEEN ACCOMPLISHED AS INDICATED HEREIN.	
BY _____	RESIDENT ENGINEER
DATE _____	
NOTE: Any further information concerning final quantities, amounts or other details relative to this project may be found at Central Files in the electronic archives.	
TRAFFIC DATA	
1992 ADT	490
1992 DHV	70
2012 ADT	660
2012 DHV	95
% T	2
% D	66
18 Kip EAL (Flexible) = 202,000 total for both directions (1992-2012)	
DESIGN SPEED = 30 MPH	



CONVENTIONAL SIGNS

- COUNTY LINE
- TOWN LINE
- LIMITS OF ACCESS
- POINT OF ACCESS
- FENCE LINE
- STONE WALL
- TRAVELED WAY
- GUARD RAIL
- RAILROAD
- SURVEY LINE
- CULVERT
- POWER POLE
- TELEPHONE POLE
- TREES
- CONTROL OF ACCESS
- PROPERTY LINE
- R.O.W TAKING LINE
- SLOPE RIGHTS
- TOP OF CUT
- TOE OF SLOPE



DATUM	
VERTICAL	ASSUMED
HORIZONTAL	NA

END PROJECT
REV STA 47+00
BEGIN APPROACH
PT REV STA 46+97.23

TYPICAL ROADWAY SECTION
SCALE: 1" = 5'-0"

SCALE - 1" = 40'

THESE PLANS ARE SUBJECT TO SUCH ENGINEERING CHANGES AS MAY BE REQUIRED BY THE FEDERAL HIGHWAY ADMINISTRATION OR THE DIRECTOR OF CONSTRUCTION AND MAINTENANCE. CONSTRUCTION IS TO BE CARRIED ON IN ACCORDANCE WITH THESE PLANS AND THE STANDARD SPECIFICATIONS FOR CONSTRUCTION, DATED 1990, AS APPROVED BY THE FEDERAL HIGHWAY ADMINISTRATION ON APRIL 15, 1990 FOR USE ON THIS PROJECT, INCLUDING ALL SUBSEQUENT REVISIONS AND SUCH REVISED SPECIFICATIONS AND SPECIAL PROVISIONS AS ARE INCORPORATED IN THESE PLANS.

SUBMITTED BY ORDER OF THE STATE TRANSPORTATION BOARD	
APPROVED <i>[Signature]</i>	DATE 7-24-96
DIRECTOR OF ENGINEERING	
PROJECT DERBY	PROJECT NO. TH2-8910
SHEET 1 OF 29 SHEETS	