

C1-C2, and C3 are to be assembled in the shop to insure proper clearance.

Cast Steel

LINE NO.	NO. POS.	MARK	DIAM. P	LENGTH L	SCREW	LENGTH B	NO. POS.	PATTERN NO.	ORDERED	SHIPMENTS
1	4	X1	4	1 0 1/2	3 1/2	1 4	8	PN24		5
2	2		2	2 2						
3	2		2	1 1 1/2						
4	2		2	2 2 1/2						

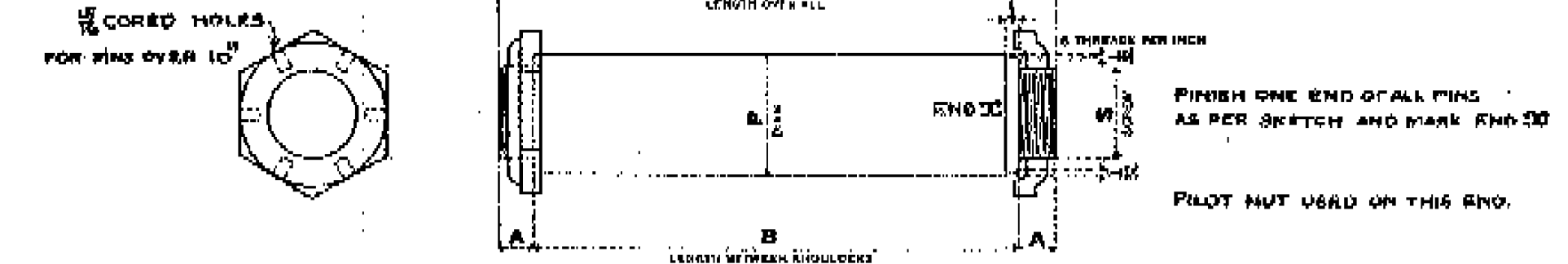
Castings C1-C2-C3 & C4 same as C1-C2-C3 & C4-F3039

Patterns Made By: H. B. ... Machine Shop
Castings Made By: ...

Castings -
Paint FIN surfaces with one coat white lead & tallow.

LANGDON STREET BRIDGE over WORCESTER BRANCH MONTPELIER VT.

Elmira ORDER NO. F3038



LINE NO.	MEMBER		PIN				NUTS		CALCULATED WEIGHT FOR ONE MEMBER	ORDERED		SHIPMENTS
	NO. POS.	MARK	DIAM. P	LENGTH L	SCREW	LENGTH B	NO. POS.	PATTERN NO.		NO. POS.	LENGTH	
1	4	X1	4	1 0 1/2	3 1/2	1 4	8	PN24			5	
2												
3												
4												

PILOT NUTS							DRIVING NUTS							
LINE NO.	NO. POS.	DIAM. OF PIN P	LENGTH L	SCREW B	PATTERN NO.	ITEM	SHIPMENTS	NO. POS.	DIAM. OF PIN P	LENGTH L	SCREW B	PATTERN NO.	ITEM	SHIPMENTS
1	4	2 1/2	3	P516				1	4	5 1/2	3	P06		
2														

PIN AND NUTS
MATERIAL: O.H. Steel SPEC. U.S. Dept of Agric. Dept. Bulletin No. 1759
DATE: 7-21-28
DRAWINGS: Elmira FABRICATION: Elmira
ORDER NO. F3038 SHEET NO. C2
NAME OF STRUCTURE: LANGDON STREET BRIDGE over WORCESTER BRANCH-MONTPELIER VT.

PROJECT: MONTPELIER	PROJECT NO.: BRM 6400 (25)
DESIGN FILE NAME: 88j100/structures/sj100ref.dgn	PLOT DATE: 27-DEC-2011
IPARM FILE NAME: sj100ref11.i	DRAWN BY: M. FESSEL
DESIGNED BY: R. S. YOUNG	CHECKED BY: R. S. YOUNG
SQUAD LEADER: C. P. WILLIAMS	SHEET: 49 OF 49
REFERENCE SHEETS	