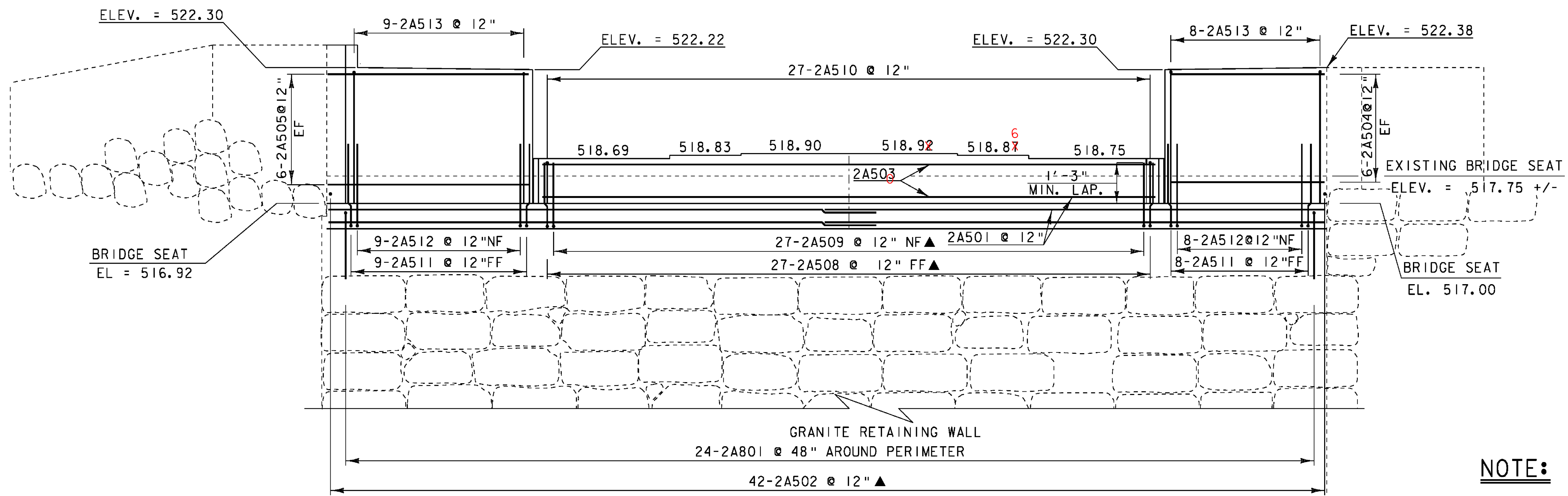


ABUTMENT #2 PLAN

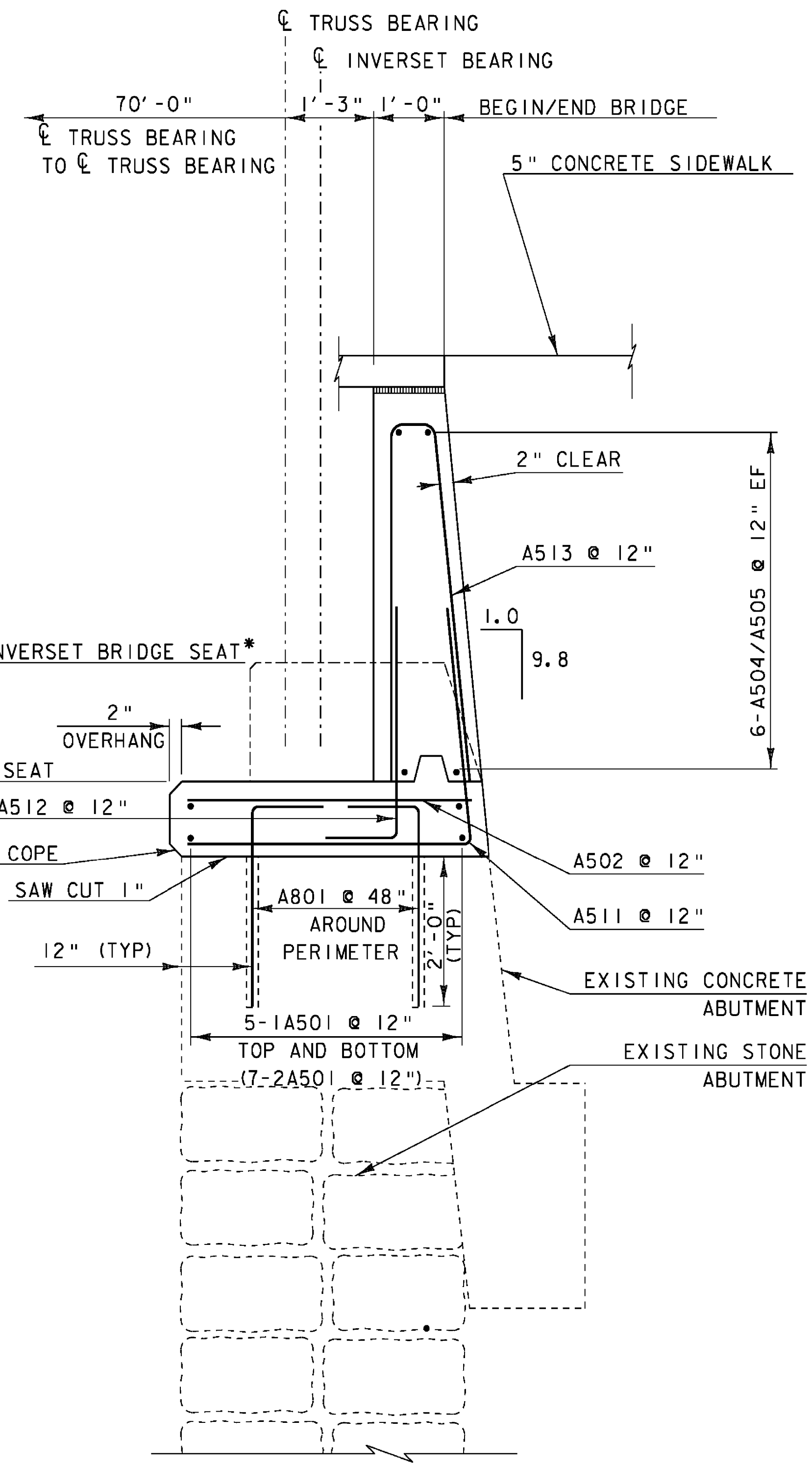
SCALE 3/8" = 1'-0"
 0 2 3 4



ABUTMENT #2 ELEVATION

SCALE 3/8" = 1'-0"
 0 2 3 4

NOTE:
 REINFORCING STEEL SHALL BE ORIENTED PARALLEL WITH
 CL LANGDON STREET, NOT PERPENDICULAR TO CL BEARINGS.



SECTION B-B
 ABUTMENT #1 AND #2
 TRUSS TYPICAL SECTION

*(SEE A-A PREVIOUS PAGE)

SCALE 3/4" = 1'-0"
 0 2

NOTE:

NF = NEAR FACE
 FF = FAR FACE
 EF = EACH FACE
 ▲ = CUT TO FIT IN FIELD
 3" CLR. UNLESS OTHERWISE
 SPECIFIED ON THE PLANS.
 ALL LAPS 2'-2" UNLESS
 NOTED OTHERWISE.

PROJECT: MONTPELIER	PROJECT NO.: BRM 6400 (25)
DESIGN FILE NAME: 88j100/structures/sj100sub.dgn	PLOT DATE: 29-SEP-2010
IPARM FILE NAME: sj100abut2.i	DRAWN BY: M. LONGSTREET
DESIGNED BY: R.S. YOUNG	CHECKED BY: R.S. YOUNG
SQUAD LEADER: C.P. WILLIAMS	SHEET: 22 OF 49
ABUTMENT #2 DETAILS	

AS-BUILT REVISIONS
 BRIDGE SEAT LAYOUT
 SEAT ELEVATION