

\* SEE PAVEMENT MARKING AND TRAFFIC SIGN PLAN ON SHEET 26 FOR LOCATION OF NEW METER POSTS.

CHANGE ELEVATION OF DI, MH, CB

11+65 RT DI 11+67 LT MH  
 12+09 LT DI  
 12+31 LT MH  
 12+53 RT MH

VERTICAL GRANITE CURB

11+62-12+75 RT  
 13+48-13+90 RT  
 11+97-12+77 LT  
 13+51-13+56 LT  
 13+71-14+08 LT

REMOVE PARKING METER POSTS\*

11+94 RT 12+16 LT  
 12+17 RT 12+61 LT  
 12+44 RT 13+00 LT  
 12+80 RT 13+22 LT  
 13+04 RT 13+45 LT  
 13+26 RT  
 13+43 RT  
 13+55 RT

BRIDGE RAIL-  
 1 RAIL BOX BEAM

12+75 - 13+46 RT  
 12+78 - 13+49 LT

REMOVE AND RESET GRANITE STEPS  
 (PAID UNDER ITEM 616.40  
 "REMOVING AND RESETTING CURB" (MOD.)

13+70 RT

PORTLAND CEMENT CONCRETE  
 SIDEWALK, 5 INCH

11+97 LT - 12+78 LT  
 13+76 LT - 14+07 LT  
 11+62 RT - 11+74 RT  
 13+48 RT - 13+89 RT

REMOVE AND REPLACE GUARD POST  
 (PAID UNDER ITEM 621.85 "GUIDE POST" (MOD.)

13+83 LT

PORTLAND CEMENT CONCRETE  
 SIDEWALK, 8 INCH

11+58 LT - 11+97 LT  
 13+52 LT - 13+76 LT

\*\*TREE SHALL BE RUSSIAN OLIVE 7' / 8' B-B  
 PLANT IN SAME LOCATION BOX ELDER IS  
 REMOVED

\*\*\*SEE SIDEWALK DETAILS ON  
 SHEET 25

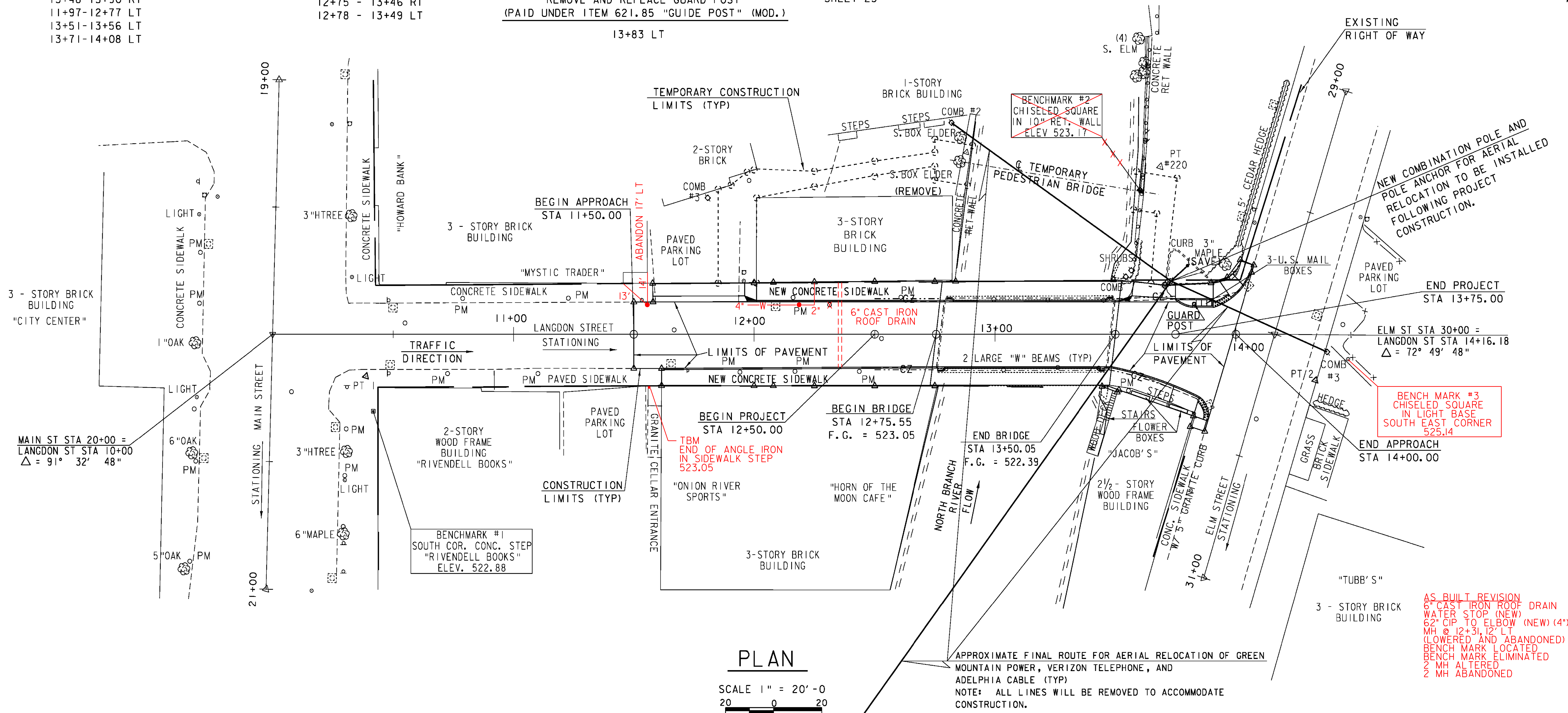
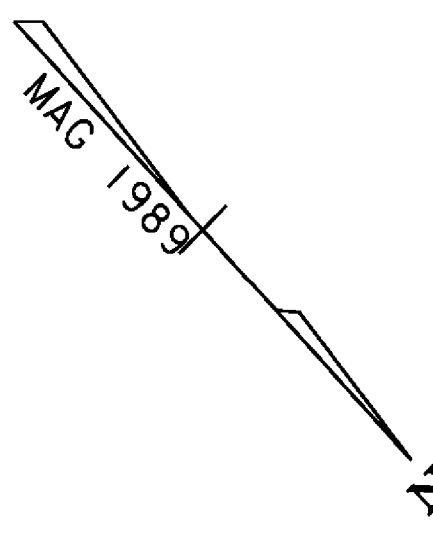
CONSTRUCT SIDEWALK RAMP TYPE 6\*\*\*  
 (WITH DETECTABLE WARNING SURFACE)

13+87 RT  
 14+00 LT

3-STORY  
 BRICK

PLANT DECIDUOUS TREE\*\*

12+86 LT



PLAN

SCALE 1" = 20'-0"  
 20 0 20

NOTE: TEMPORARY RELOCATION OF UTILITIES ARE OUTSIDE PROJECT LIMITS

AS BUILT REVISION  
 6" CAST IRON ROOF DRAIN  
 WATER STOP (NEW)  
 62" CIP TO ELBOW (NEW) (4")  
 MH @ 12+31.12 LT  
 (LOWERED AND ABANDONED)  
 BENCH MARK LOCATED  
 BENCH MARK ELIMINATED  
 2 MH ALTERED  
 2 MH ABANDONED

EXISTING BRIDGE DATA  
 STEEL PONY TRUSS  
 73.44' SPAN  
 26'-0" ROADWAY  
 29'-11" OUTSIDE TO OUTSIDE OF TRUSS  
 2 - 5' SIDE WALKS  
 2 LARGE W SECTIONS EACH SIDE ADDED TO  
 SUPPORT BRIDGE INSIDE TRUSSES  
 ONE WAY TRAFFIC

DATUM  
 VERTICAL NGVD 1929  
 HORIZONTAL ASSUMED

|                                             |                               |
|---------------------------------------------|-------------------------------|
| PROJECT:<br>MONTPELIER                      | PROJECT NO. :<br>BRM 6400(25) |
| DESIGN FILE NAME: /str4/88j100/sj100bdr.dgn | PLOT DATE: 29-SEP-2010        |
| IPARM FILE NAME: /str4/88j100/sj100lcl.l    | SURVEY DATE: 4/89             |
| SURVEYED BY: R. GILMAN                      | DRAWN BY: W.B. SYMONDS        |
| SQUAD LEADER: C.P. WILLIAMS                 | SHEET: 6 OF 49                |
| LAYOUT SHEET                                |                               |