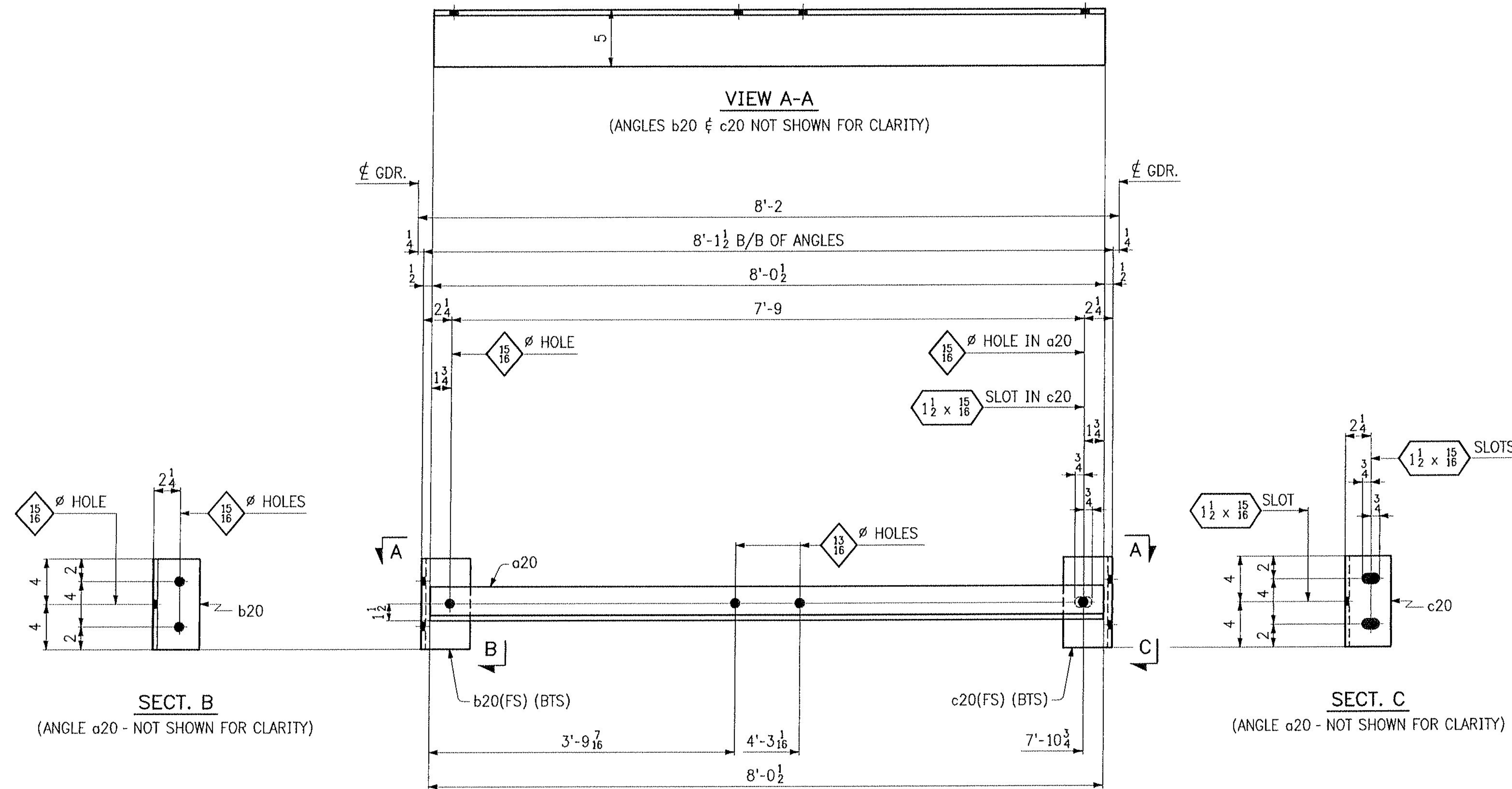


LINE	NO. OF PCS.	SHIP MARK	ASSY MARK	MATERIAL					REMARKS	
				SHAPE	SECTION	LENGTH FT.	IN.	MATERIAL SPEC.		ITEM NO.
1				DUCT	BANK SUPPORTS					
2	18	20D1	a20	L	5 x 3 x 3/8	8	0 1/2	M270-50W	4 5	687 lbs.
3	18		b20	L	4 x 4 x 3/8	0	8	M270-50W	4 6	183 lbs.
4	18		c20	L	4 x 4 x 3/8	0	8	M270-50W	4 8	183 lbs.
5	54			1/2 BOLT		0	2	A307	8 3	
6										
7	110			7/8 BOLT		0	2 1/4	A307		
8										
9										
10										
11										
12										
13										
14										
15										
16										
17										
18										
19										
20										
21										
22										
23										
24										
25										



27 ~ 6" DUCT BANK SUPPORTS ~ 20D1

T.Y. LIN INTERNATIONAL

THE STAMPED DOCUMENTS ARE HEREBY:

APPROVED
 APPROVED AS NOTED
 REVISE AND RESUBMIT

SEE TRANSMITTAL FOR ADDITIONAL INFORMATION AS APPLICABLE.

THIS REVIEW IS FOR GENERAL CONFORMANCE WITH DESIGN CONCEPT ONLY. ANY DEVIATION FROM THE PLANS OR SPECIFICATIONS NOT CLEARLY NOTED BY THE CONTRACTOR HAS NOT BEEN REVIEWED. REVIEW BY THE ENGINEER SHALL NOT RELIEVE THE CONTRACTOR OF THE CONTRACTUAL RESPONSIBILITY FOR ANY ERRORS OR DEVIATION FROM THE CONTRACT REQUIREMENTS.

RICK HEBERT
 REVIEWER

7/8/2015
 DATE

NO.	DATE	REMARKS	BY

CASCO BAY STEEL		CASCO BAY STEEL STRUCTURES	
ONE WALLACE AVENUE SOUTH PORTLAND, ME 04106		PHONE: 207-780-6722 FAX: 207-780-6726	
STRUCTURE	BENMONT AVE. (TH-7) (URBAN MINOR ARTERIAL)		
LOCATION	TOWN OF BENNINGTON, VERMONT		
PROJECT NO.	BRIDGE NO. 57	PROJECT NO. BRF 1000(16)	
ENGINEER	STATE OF VERMONT AGENCY OF TRANSPORTATION		
CUSTOMER	ALPINE CONSTRUCTION		
ITEM	UTILITY SUPPORTS		
SURFACE PREP.	SSPC-SP10	OPEN HOLES	AS NOTED
PAINT	NONE		
APPROVAL	DRAWN WCG	6-30-15	SHEET NO. 20
SHOP	CHECKED	7-6-15	JOB NO. 605

- NOTES:**
- FOR GENERAL NOTES, SEE SHT. GN1.
 - BTS - BOLTED FOR SHIPMENT.