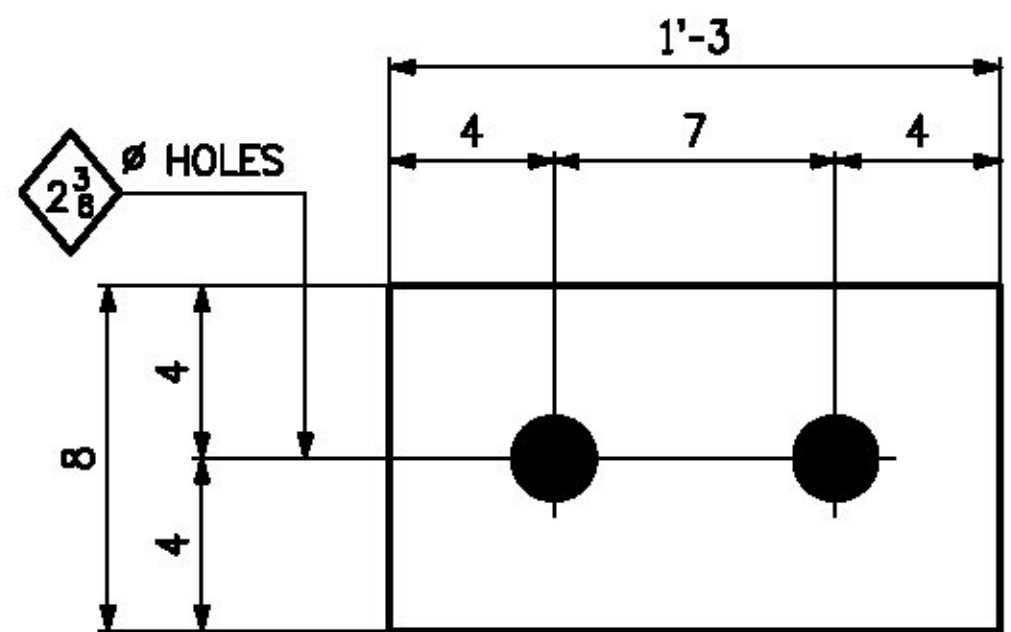
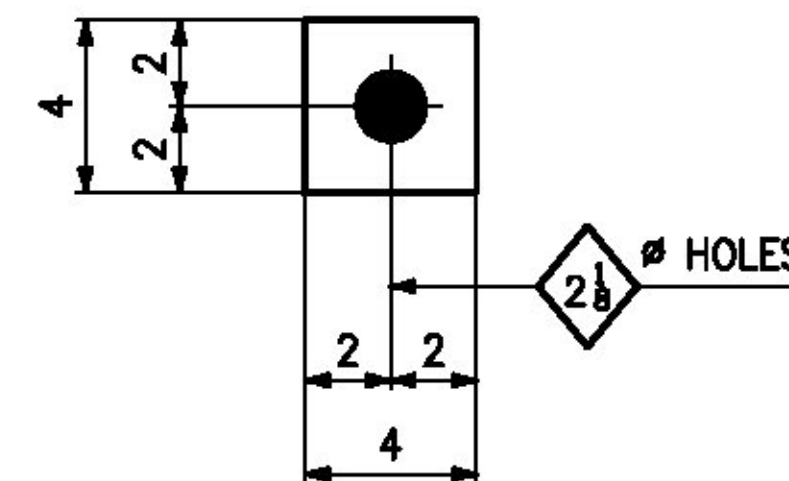


10 ~ LEVELING BOLT ASSEMBLIES ~ 19AB
(ABUT. 1 & 2)



LEVELING PLATE DETAIL ~ pa19



SQUARE WASHER DETAIL ~ pb19

LINE	NO. OF PCS.	SHIP MARK	ASS'Y MARK	MATERIAL					REMARKS	
				SHAPE	SECTION	LENGTH FT.	IN.	MATERIAL SPEC.		ITEM NO.
1	10	19AB		LEVELING ASSEMBLY					1379 lbs.	
2	20			ROD	2#	3	0	F1554-55	4/14	640 lbs.
3	80			NUT	2#			A563M	4/15	180 lbs.
4	10		pa19	PL	1 3/8 x 8	1	3	M270-50W	4/17	468 lbs.
5	40		pb19	PL	1/2 x 4	0	4	M270-50W	4/18	91 lbs.
6										
7										
8										
9										
10										
11										
12										
13										
14										
15										
16										
17										
18										
19										
20										
21										
22										
23										
24										
25										

NOTES:

- FOR GENERAL NOTES, SEE SHT. GN1.

T.Y. LIN INTERNATIONAL

THE STAMPED DOCUMENTS ARE HEREBY:

- APPROVED
- APPROVED AS NOTED
- REVISE AND RESUBMIT

SEE TRANSMITTAL FOR ADDITIONAL INFORMATION AS APPLICABLE.

THIS REVIEW IS FOR GENERAL CONFORMANCE WITH DESIGN CONCEPT ONLY. ANY DEVIATION FROM THE PLANS OR SPECIFICATIONS NOT CLEARLY NOTED BY THE CONTRACTOR HAS NOT BEEN REVIEWED. REVIEW BY THE ENGINEER SHALL NOT RELIEVE THE CONTRACTOR OF THE CONTRACTUAL RESPONSIBILITY FOR ANY ERRORS OR DEVIATION FROM THE CONTRACT REQUIREMENTS.

RICK HEBERT
REVIEWER

2/2/2015
DATE

NO.		DATE		REMARKS		BY
REVISIONS						
			CASCO BAY STEEL STRUCTURES ONE WALLACE AVENUE PHONE: 207-780-6722 SOUTH PORTLAND, ME 04106 FAX: 207-780-6726			
STRUCTURE		BENMONT AVE. (TH-7) (URBAN MINOR ARTERIAL)				
LOCATION		TOWN OF BENNINGTON, VERMONT				
PROJECT NO.		BRIDGE NO. 57		PROJECT NO. BR 1000(16)		
ENGINEER		STATE OF VERMONT AGENCY OF TRANSPORTATION				
CUSTOMER		ALPINE CONSTRUCTION				
ITEM		GIRDER LEVELING ASSEMBLY				
SURFACE PREP.		OPEN HOLES		AS NOTED		
PAINT		NONE				
APPROVAL	DRAWN	MAY	12-9-14	SHEET NO.	JOB NO.	
SHOP	CHECKED	GDC	12-10-14	19	605	