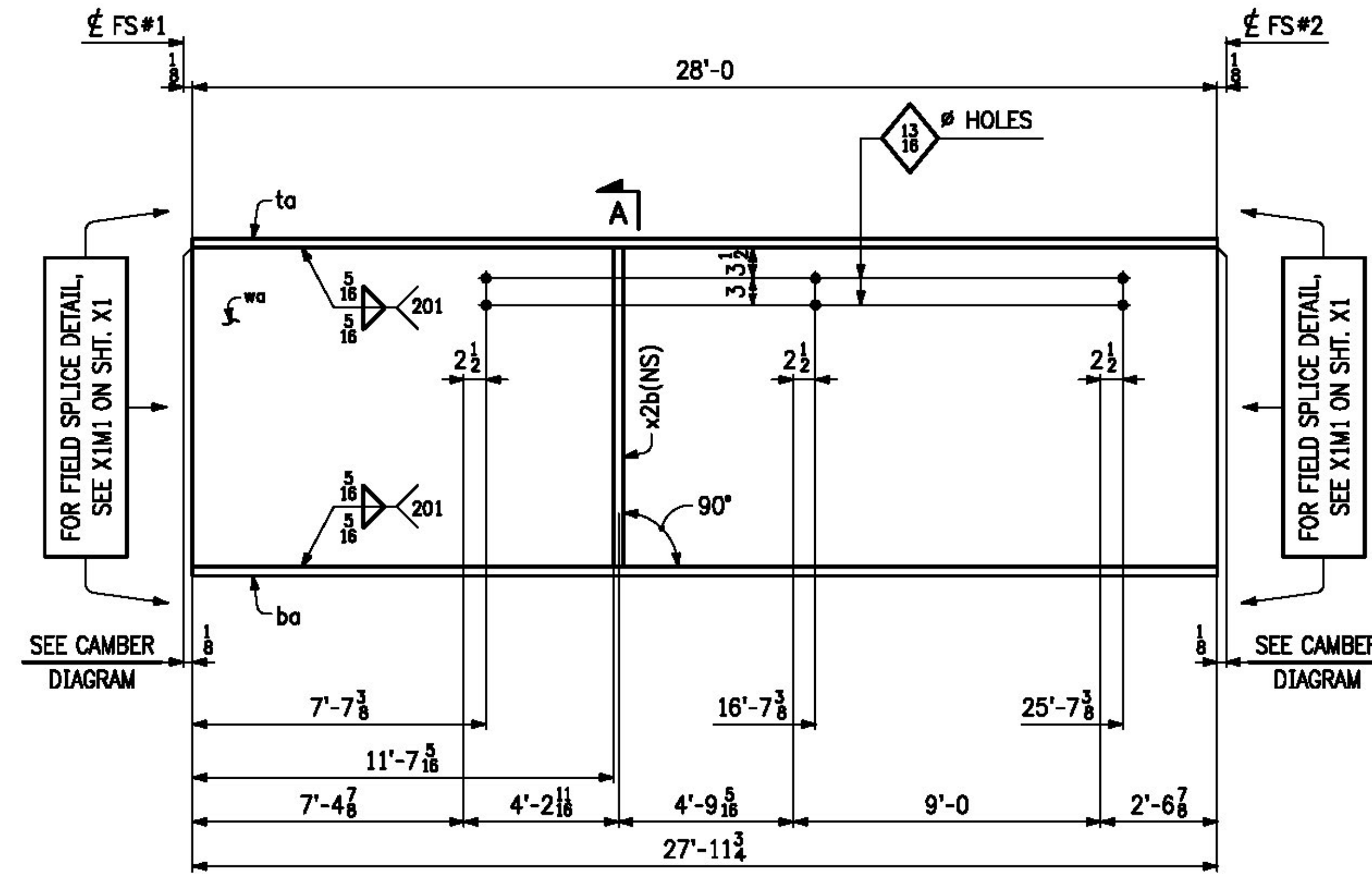
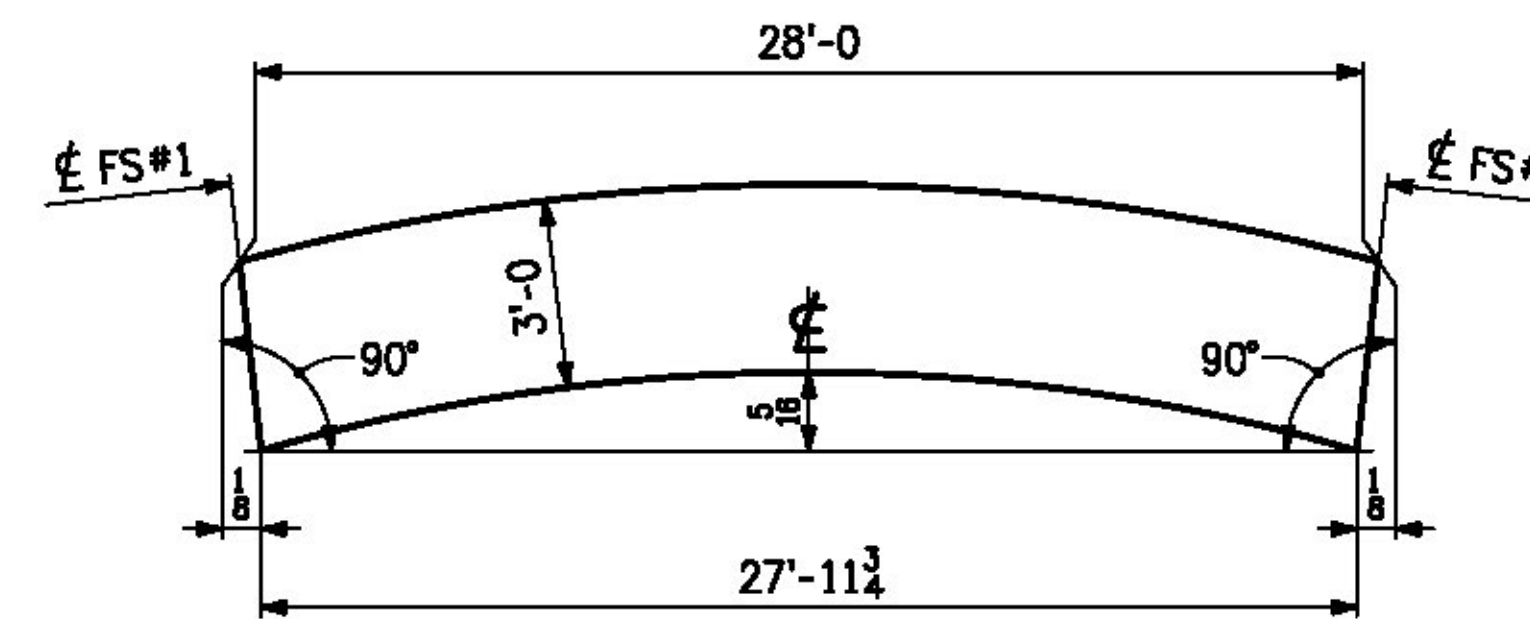


Spacing of waterline support beams are not all at 9'-0" spaces as shown on Contract Drawing Sheet 39 of 75. Maximum variation appears to be 9". The increase in span is acceptable, however the Contractor should refer to the Special Provision (Water Main on Bridge) to ensure compliance with the hanger distance to pipe joint requirements are also met.

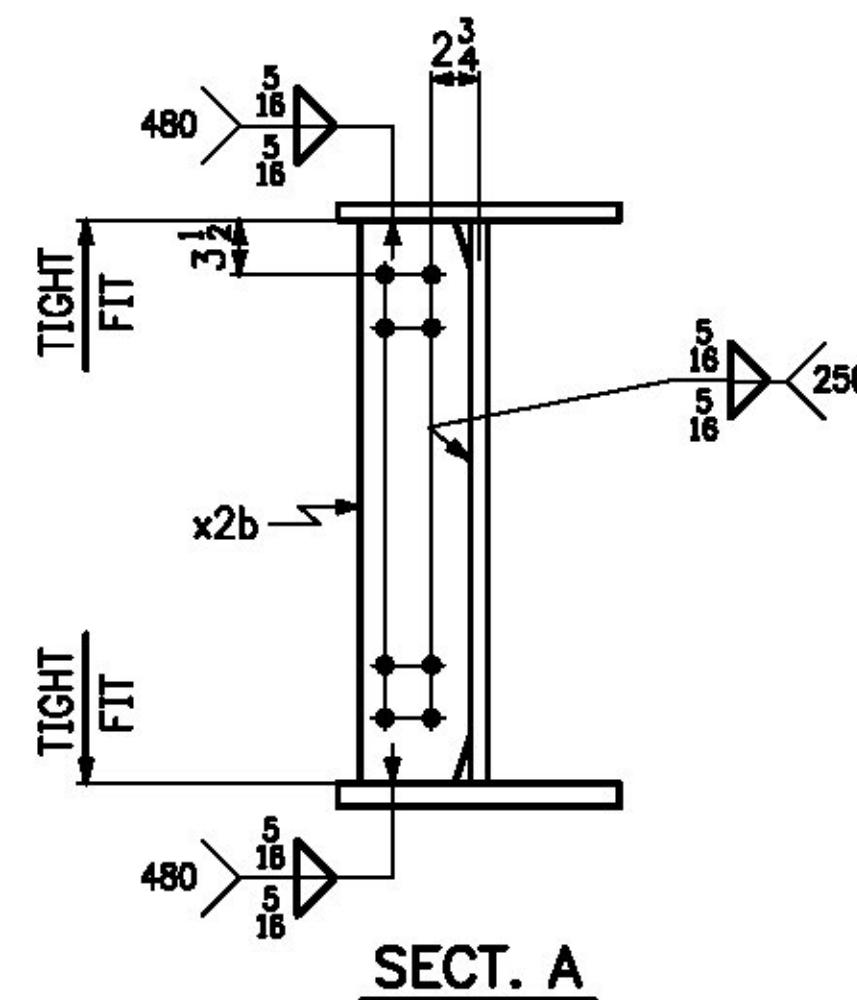


**ONE ~ GIRDER ~ 6G1B**

- FOR GIRDER STANDARD DETAILS, SEE SHT. X2.
- FOR WEB CUTTING DIAGRAM, SEE SHT. C3.
- FOR FLANGE CUTTING DIAGRAMS, SEE SHT. C3.
- FOR GENERAL NOTES, SEE SHT. GN1.



**CAMBER DIAGRAM**



**SECT. A**

LINE	NO. OF PCS.	SHIP MARK	ASS'Y MARK	MATERIAL					REMARKS	
				SHAPE	SECTION	LENGTH FT.	IN.	MATERIAL SPEC.		ITEM NO.
1	1	6G1B		GIRDER					5180 lbs.	
2	1		wa	PL	1/2 x 36	28	0	M270-50WT2	1/19	1715 lbs.
3	1		ta	PL	1 x 18	28	0	M270-50WT2	2/11	1715 lbs.
4	1		ba	PL	1 x 18	27	11 3/4	M270-50WT2	2/11	1714 lbs.
5										
6	1		x2b	PL	1/2 x 7	3	0	M270-50W	3/11	36 lbs.
7										
8										
9										
10										
11										
12										
13										
14										
15										
16										
17										
18										
19										
20										
21										
22										
23										
24										
25										

**T.Y. LIN INTERNATIONAL**

THE STAMPED DOCUMENTS ARE HEREBY:

- \_\_\_\_ APPROVED
- X APPROVED AS NOTED
- \_\_\_\_ REVISE AND RESUBMIT

SEE TRANSMITTAL FOR ADDITIONAL INFORMATION AS APPLICABLE.

THIS REVIEW IS FOR GENERAL CONFORMANCE WITH DESIGN CONCEPT ONLY. ANY DEVIATION FROM THE PLANS OR SPECIFICATIONS NOT CLEARLY NOTED BY THE CONTRACTOR HAS NOT BEEN REVIEWED. REVIEW BY THE ENGINEER SHALL NOT RELIEVE THE CONTRACTOR OF THE CONTRACTUAL RESPONSIBILITY FOR ANY ERRORS OR DEVIATION FROM THE CONTRACT REQUIREMENTS.

RICK HEBERT  
REVIEWER

2/2/2015  
DATE

NO.	DATE	REMARKS	BY
REVISIONS			
		<b>CASCO BAY STEEL STRUCTURES</b> ONE WALLACE AVENUE SOUTH PORTLAND, ME 04106 PHONE: 207-780-6722 FAX: 207-780-6726	
STRUCTURE		BENMONT AVE. (TH-7) (URBAN MINOR ARTERIAL)	
LOCATION		TOWN OF BENNINGTON, VERMONT	
PROJECT NO.		BRIDGE NO. 57 PROJECT NO. BRF 1000(16)	
ENGINEER		STATE OF VERMONT AGENCY OF TRANSPORTATION	
CUSTOMER		ALPINE CONSTRUCTION	
ITEM		GIRDER ~ 6G1B	
SURFACE PREP.		SSPC-SP10	OPEN HOLES 1 1/8" (UN)
PAINT		NONE	
APPROVAL	DRAWN	GDC 12-10-14	SHEET NO. 6
SHOP	CHECKED	FM 1-5-15	JOB NO. 605