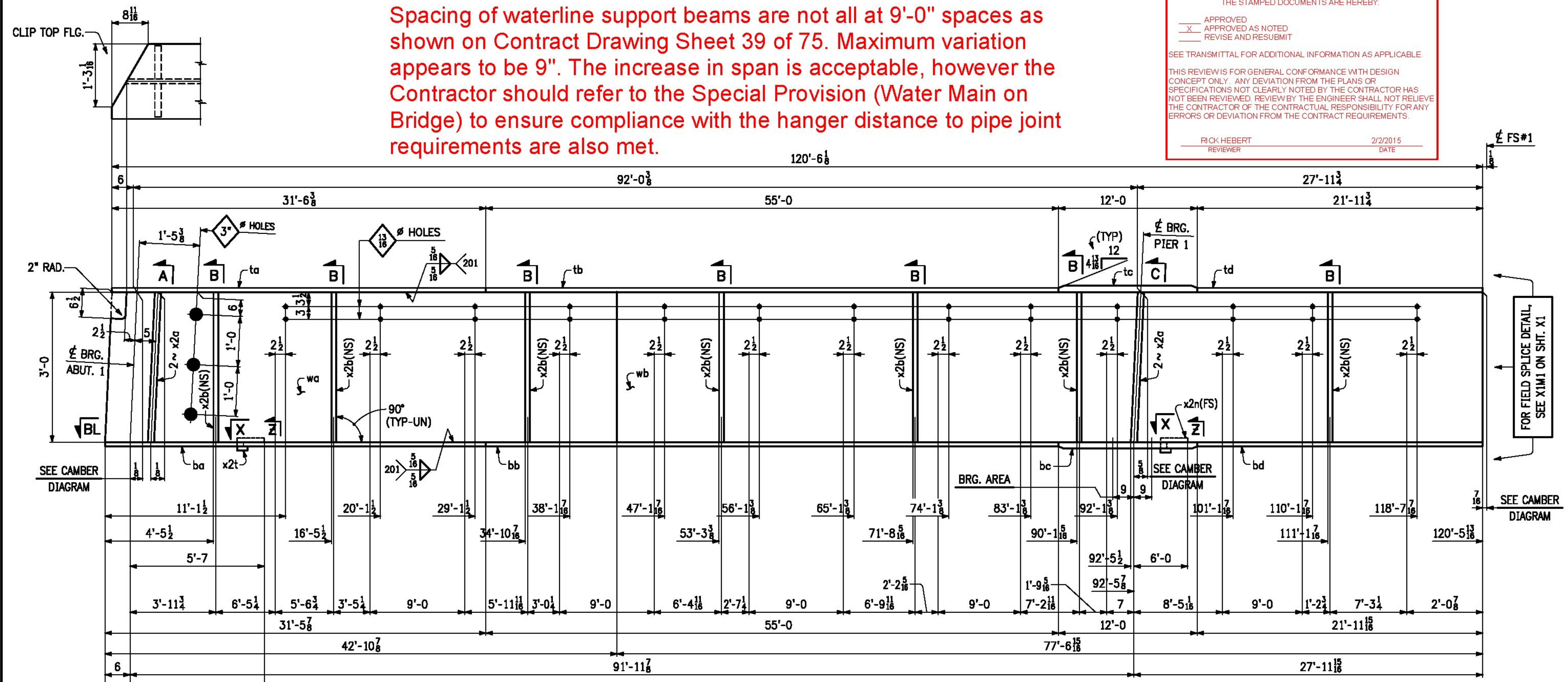


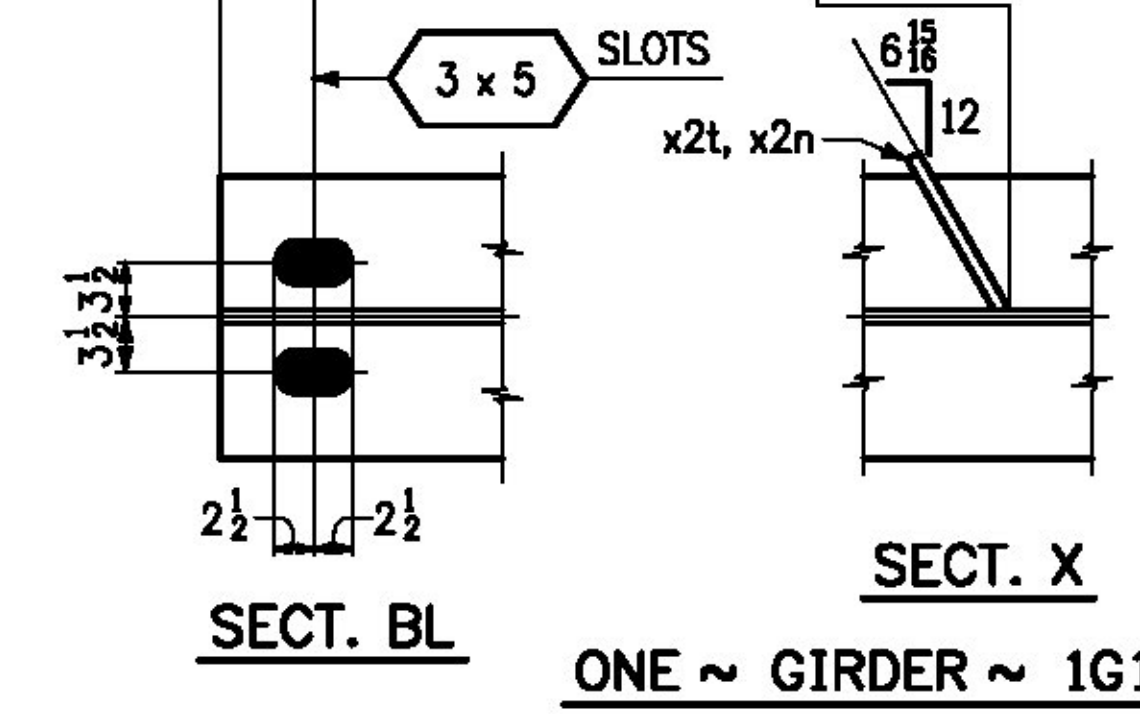
T.Y. LIN INTERNATIONAL
 THE STAMPED DOCUMENTS ARE HEREBY:
 APPROVED
 APPROVED AS NOTED
 REVISE AND RESUBMIT
 SEE TRANSMITTAL FOR ADDITIONAL INFORMATION AS APPLICABLE.
 THIS REVIEW IS FOR GENERAL CONFORMANCE WITH DESIGN CONCEPT ONLY. ANY DEVIATION FROM THE PLANS OR SPECIFICATIONS NOT CLEARLY NOTED BY THE CONTRACTOR HAS NOT BEEN REVIEWED. REVIEW BY THE ENGINEER SHALL NOT RELIEVE THE CONTRACTOR OF THE CONTRACTUAL RESPONSIBILITY FOR ANY ERRORS OR DEVIATION FROM THE CONTRACT REQUIREMENTS.
 RICK HEBERT REVIEWER 2/2/2015 DATE

Spacing of waterline support beams are not all at 9'-0" spaces as shown on Contract Drawing Sheet 39 of 75. Maximum variation appears to be 9". The increase in span is acceptable, however the Contractor should refer to the Special Provision (Water Main on Bridge) to ensure compliance with the hanger distance to pipe joint requirements are also met.

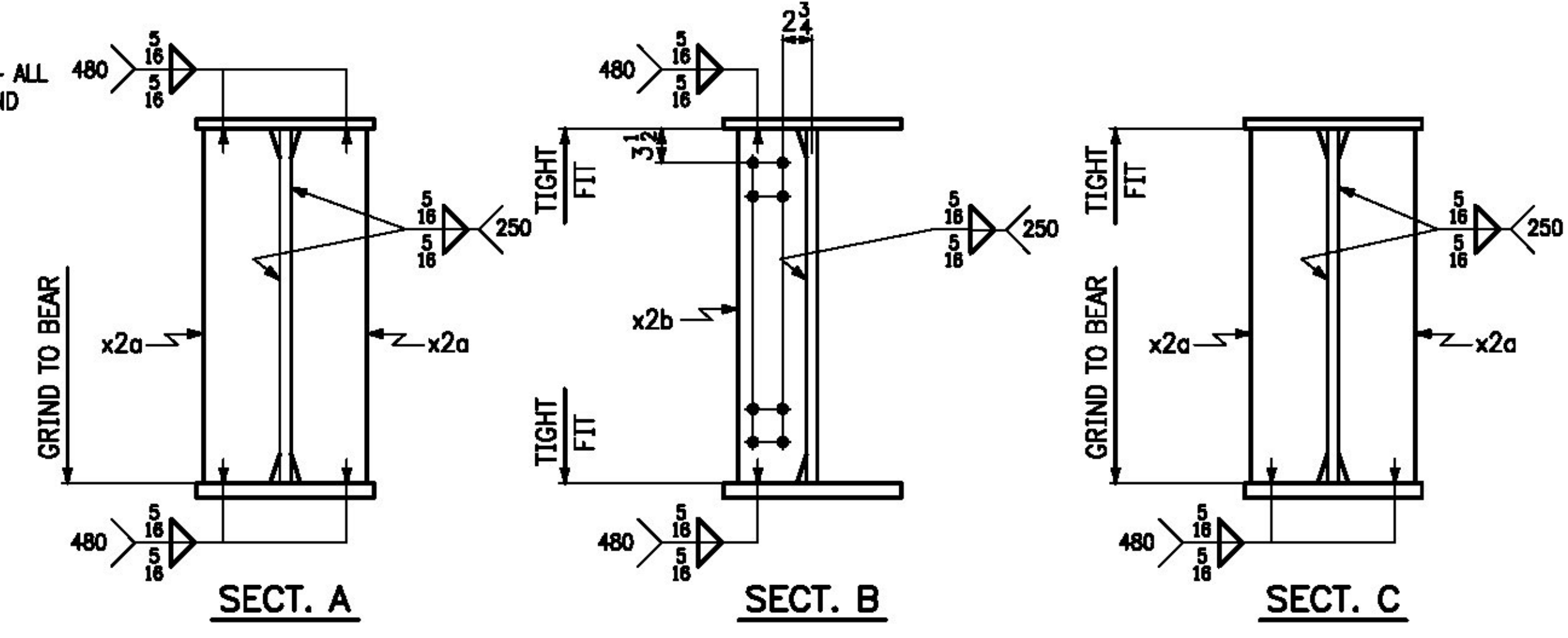


FOR FIELD SPLICE DETAIL, SEE X1M1 ON SHT. X1

SEE CAMBER DIAGRAM



- ONE ~ GIRDER ~ 1G1A**
- FOR GIRDER STANDARD DETAILS, SEE SHT. X2.
 - FOR WEB CUTTING DIAGRAM, SEE SHT. C1.
 - FOR FLANGE CUTTING DIAGRAMS, SEE SHT. C1.
 - FOR GENERAL NOTES, SEE SHT. GN1.
 - "BRG. AREA" INDICATES AREA THAT MUST BE FLAT TO PROVIDE A UNIFORM EVEN CONTACT WITH SOLE PLATE.



NO.	DATE	REMARKS	BY
REVISIONS			
		CASCO BAY STEEL STRUCTURES ONE WALLACE AVENUE SOUTH PORTLAND, ME 04106 PHONE: 207-780-6722 FAX: 207-780-6726	
STRUCTURE <u>BENMONT AVE. (TH-7) (URBAN MINOR ARTERIAL)</u>			
LOCATION <u>TOWN OF BENNINGTON, VERMONT</u>			
PROJECT NO. <u>BRIDGE NO. 57 PROJECT NO. BRF 1000(16)</u>			
ENGINEER <u>STATE OF VERMONT AGENCY OF TRANSPORTATION</u>			
CUSTOMER <u>ALPINE CONSTRUCTION</u>			
ITEM <u>GIRDER ~ 1G1A</u>			
SURFACE PREP. <u>SSPC-SP10</u> OPEN HOLES <u>1/2" (UN)</u>			
PAINT <u>NONE</u>			
APPROVAL	DRAWN <u>GDC</u>	12-5-14	SHEET NO. <u>1AB</u>
SHOP	CHECKED <u>FM</u>	1-3-15	JOB NO. <u>605</u>

Sheet DMB - Prepared: 01/09/2015 @ 08:36 (HEBERT)