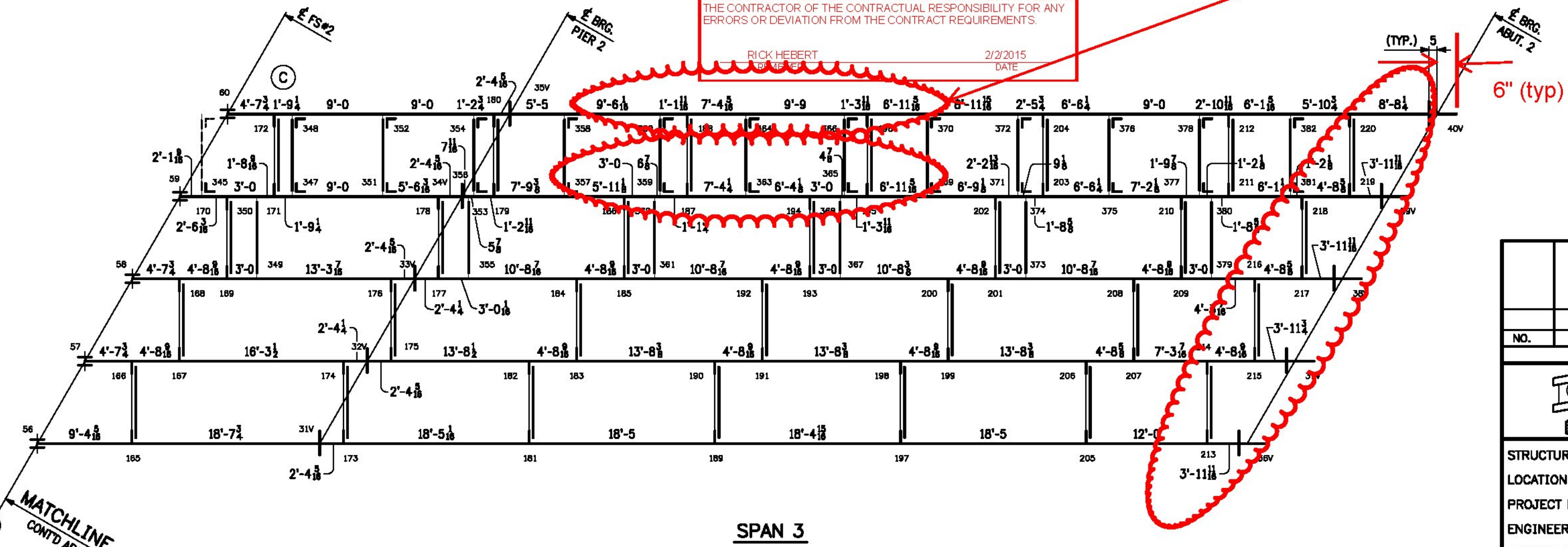


To clarify, Dimensions are OK to CL Bearing and not to bearing stiffener (typ)

Spacing of waterline support beams are not all at 9'-0" spaces as shown on Contract Drawing Sheet 39 of 75. Maximum variation appears to be 9". The increase in span is acceptable, however the Contractor should refer to the Special Provision (Water Main on Bridge) to ensure compliance with the hanger distance to pipe joint requirements are also met.

T.Y. LIN INTERNATIONAL
 THE STAMPED DOCUMENTS ARE HEREBY:
 APPROVED
 X APPROVED AS NOTED
 REVISE AND RESUBMIT
 SEE TRANSMITTAL FOR ADDITIONAL INFORMATION AS APPLICABLE.
 THIS REVIEW IS FOR GENERAL CONFORMANCE WITH DESIGN CONCEPT ONLY. ANY DEVIATION FROM THE PLANS OR SPECIFICATIONS NOT CLEARLY NOTED BY THE CONTRACTOR HAS NOT BEEN REVIEWED. REVIEW BY THE ENGINEER SHALL NOT RELIEVE THE CONTRACTOR OF THE CONTRACTUAL RESPONSIBILITY FOR ANY ERRORS OR DEVIATION FROM THE CONTRACT REQUIREMENTS.
 RICK HEBERT 2/2/2015
 DATE

- NOTES:**
- LONGITUDINAL DIMS. ARE SLOPING ALONG BOTTOM OF WEB IN CAMBERED POSITION.
 - TRANSVERSE DIMS. ARE HORIZONTAL.
 - DENOTES DROP (FINAL). ARROW POINTS TO LOW END.
 - BEARING STIFFENERS AND ENDS OF GIRDERS ARE VERTICAL IN FINAL POSITION.
 - INT. CONN. PLATES ARE NORMAL TO BOTTOM FLANGE.
 - FOR LAYOUTS SEE DWG. TD1 & TD2.



THIS IS A WORK DRAWING. ITS FUNCTION IS TO PROVIDE BASIC DIMENSIONS AND CONCEPTS FOR USE IN THE PREPARATION OF THE SHOP DETAILS. IT IS NOT INTENDED TO BE USED FOR ERECTION OR FABRICATION.

NO.	DATE	REMARKS	BY
REVISIONS			
		CASCO BAY STEEL STRUCTURES ONE WALLACE AVENUE SOUTH PORTLAND, ME 04106 PHONE: 207-780-6722 FAX: 207-780-6726	
STRUCTURE		BENMONT AVE. (TH-7) (URBAN MINOR ARTERIAL)	
LOCATION		TOWN OF BENNINGTON, VERMONT	
PROJECT NO.		BRIDGE NO. 57 PROJECT NO. BRF 1000(16)	
ENGINEER		STATE OF VERMONT AGENCY OF TRANSPORTATION	
CUSTOMER		ALPINE CONSTRUCTION	
ITEM		CALC PLAN	
SURFACE PREP.		OPEN HOLES	
PAINT			
APPROVAL	DRAWN WCG	12-2-14	SHEET NO.
SHOP	CHECKED LX	12-5-14	WS1
			JOB NO. 605