

GENERAL NOTES

STEEL SUPERSTRUCTURE: TO INCLUDE 7 WF BEAMS, 14 BEARING & ASSEMBLY AND INDICATED DIAPHRAGMS PER SPAN.

CAMBER: ALL STEEL BEAMS SHALL BE ROLLED TO A TRUE CIRCULAR CAMBER FOR THE FULL LENGTH OF THE BEAM, THE MIDDLE ORDINATE TO BE AS LISTED IN THE TABLE.

PAINT: ALL STRUCTURAL STEEL SHALL BE PAINTED AS SPECIFIED UNDER ITEM 43A-B OF PAMPHLET-E, STANDARD ROAD BRIDGE SPECIFICATIONS, STATE OF VERMONT, 1936.

THE FINAL COAT OF FIELD PAINT SHALL BE BLACK UNLESS OTHERWISE DIRECTED BY THE ENGINEER.

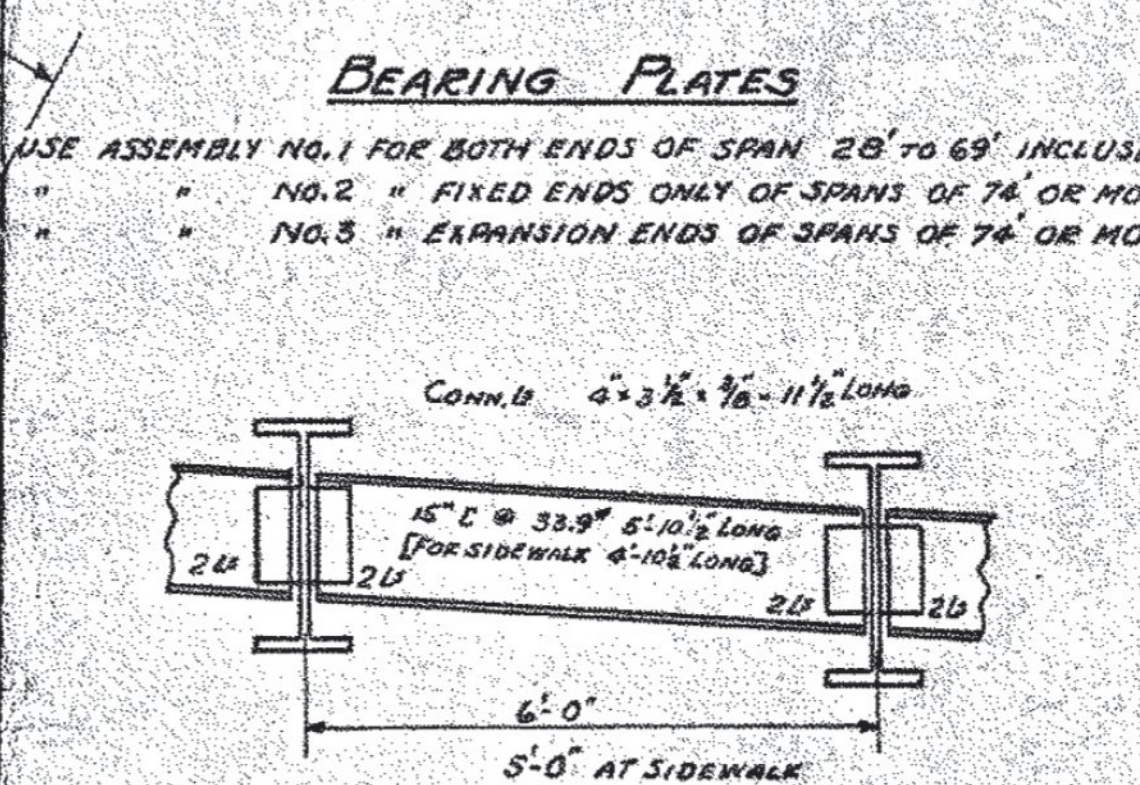
QUANTITIES: THIS SHEET DOES NOT INCLUDE QUANTITIES FOR RAILING, CURBS, AND POSTS.

REINFORCING: TRANSVERSE REINFORCING BARS SHALL BE PROVIDED AS FOR A SQUARE SPAN BARS. SHALL BE CUT IN FIELD TO FIT ONE SKEW END CUT OFF ENDS SHALL BE USED IN OPPOSITE SKEW END.

FOR LOCATION OF FIXED AND EXPANSION BEARINGS, SEE PLAN & PROFILE SHEET.

DRAINS: REFER TO STD. SHEET SB-80 DETAIL A.

DESIGN: ALL MATERIALS & CONSTRUCTION SHALL CONFORM TO THE STANDARD ROAD BRIDGE SPECIFICATIONS, STATE OF VERMONT, 1936 & THE A.A.S.M.O. SPEC FOR 1935 DESIGNED FOR H-15 LIVE LOADING. DL INCLUDES WEIGHT OF BEAMS, SLAB, 25' 0" PAVING, RAIL S.D.-7A SIDEWALK LL OF 375' LL, IMPACT ON THE TRUCK LL ONLY OF 23.7% (FOR 34' SPAN ONLY).



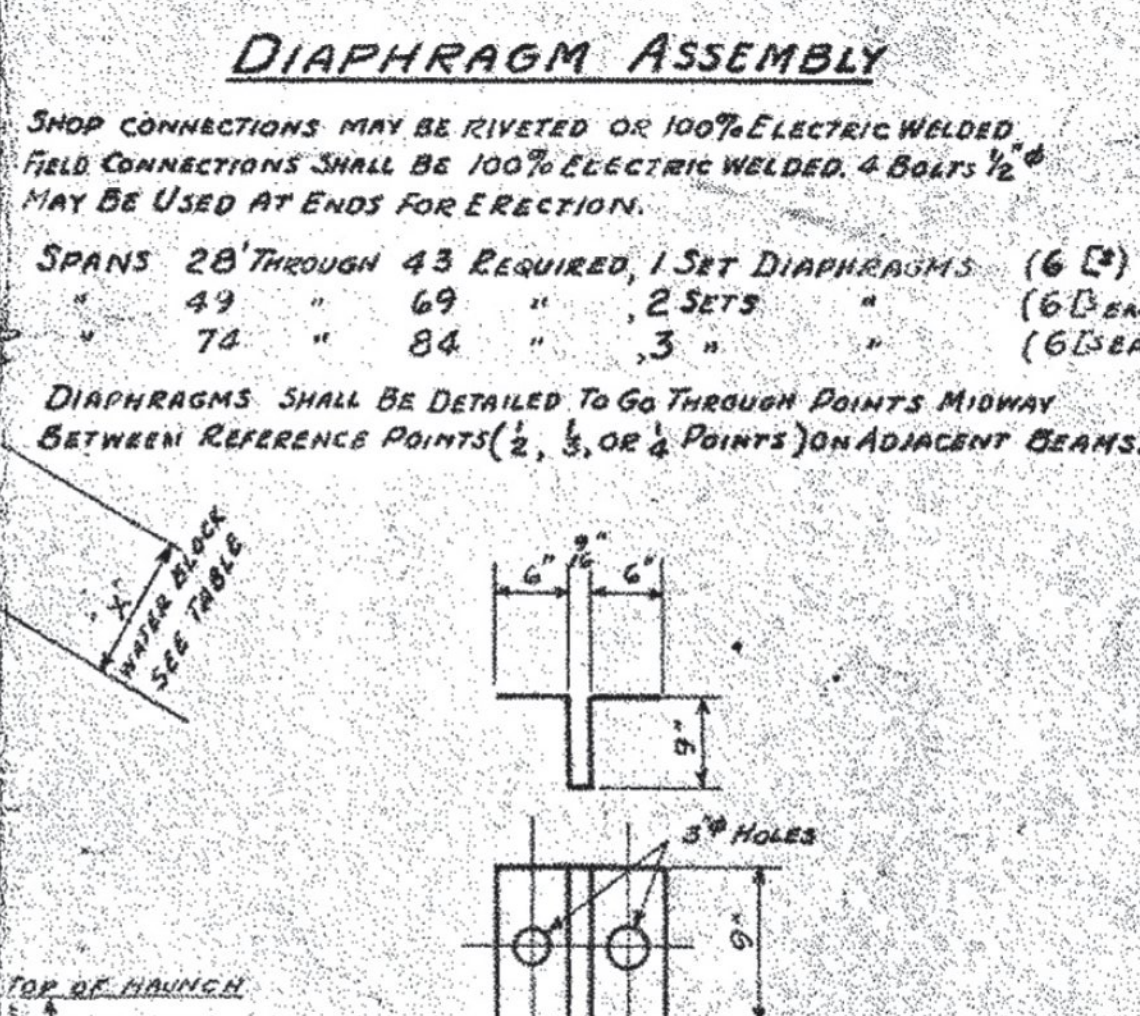
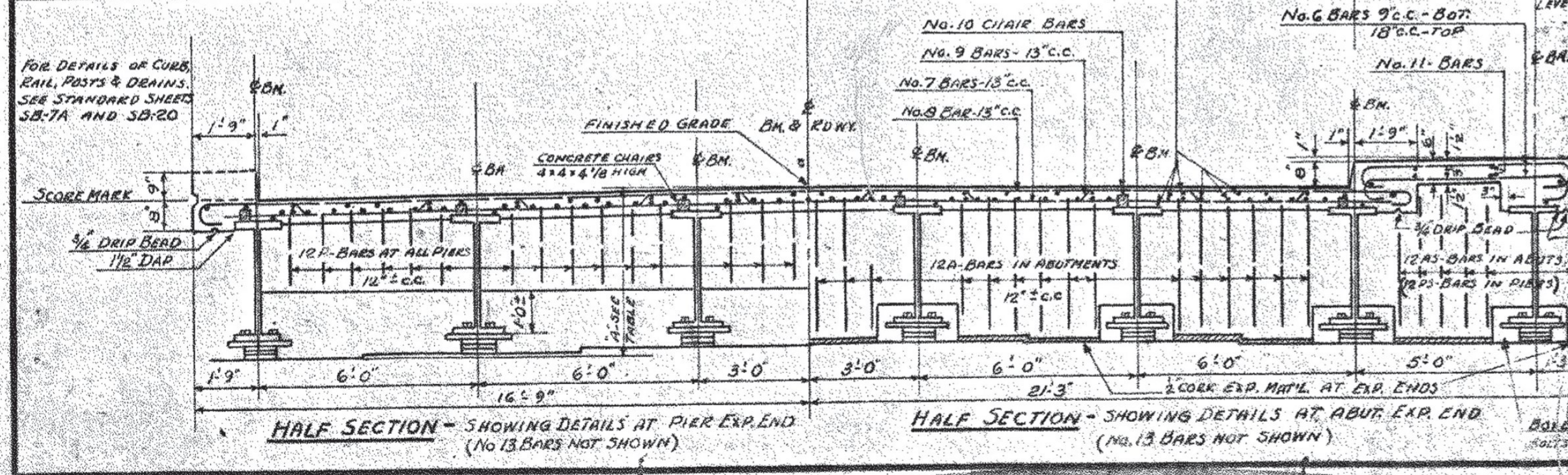
DETAILS OF REINFORCING BARS

BAR NO.	SIZE	SHAPE	LENGTH	LOCATION
No. 6	5/8"	U	28'-0"	AT ABUTMENTS
No. 7	5/8"	U	33'-0"	AT PIERS
No. 8	5/8"	U	34'-5"	AT PIERS
No. 9	5/8"	W	35'-10"	AT PIERS
No. 10	5/8"	U	28'	SPAN
No. 11	5/8"	U	28'	SPAN
No. 12	5/8"	U	28'	SPAN
No. 13	5/8"	U	23'-0"	SPAN
No. 14	1"	U	23'-0"	SPAN

ESTIMATED QUANTITIES

OVERALL SPAN	STRUCTURAL STEEL					REINFORCING STEEL SCHEDULE													CONCRETE CLASS A																																																																																
	SIZE	DIM. A	LOT. H.	DIM. X	DIM. Y	NO.	7	8	9	10	11	12	13	14	15	16	17	18		19	20	21	22	23	24	25	26	27	28	29	30	31	32	33	34	35	36	37	38	39	40	41	42	43	44	45	46	47	48	49	50	51	52	53	54	55	56	57	58	59	60	61	62	63	64	65	66	67	68	69	70	71	72	73	74	75	76	77	78	79	80	81	82	83	84	85	86	87	88	89	90	91	92	93	94	95	96	97	98
28	3/4"	260	3.91	4.05	85.5	2.0	1.0	10	2.4	950	157,743	170	70	70	78	12	160	60	12	24	16,201	8	0																																																																												

SECTIONS SHOWING DETAILS OF CURTAIN WALLS



ESTIMATED QUANTITIES

PROJECT NAME: BENNINGTON

NO. SPANS: 5 @ 84'

30° SKEW STANDARD I-BEAM BRIDGE with reinforced concrete Deck 30' ROADWAY WITH SIDEWALK SPANS OF 28' TO 84' OVERALL

Designed by J.G.G. for 84' span (JAN. 1, 1938)
 Drawn by D.W.P. (FROM S.I. 22-30-53M)
 Traced by D.W.P.
 Checked by [Name]
 Series S.I.B. No. 30-30-SEW Filed with S.I.M. Sheet of Sheets