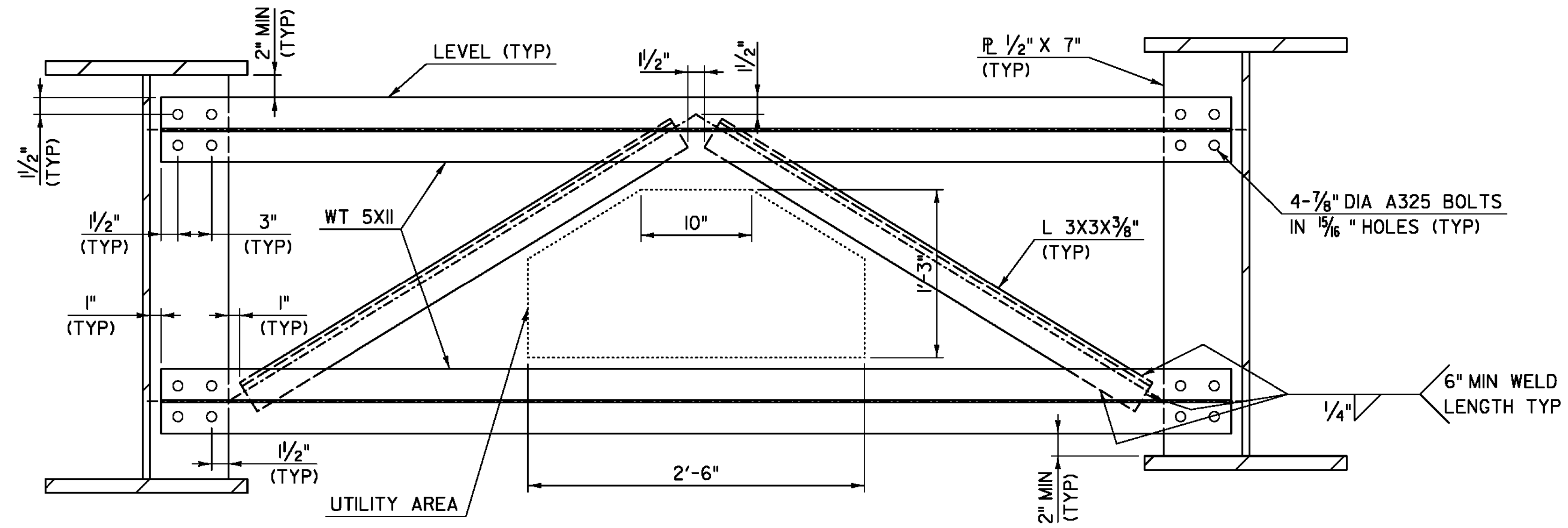


ADDITIONAL UTILITY SUPPORTS FOR DUCT BANK WERE ADDED AS REQUIRED - SEE SHOP DRAWING

- NOTES:**
1. REFER TO SD-601.00 "STRUCTURAL STEEL DETAILS AND NOTES" FOR DRIP PLATE DETAIL.
  2. REFER TO SD-602.00 "STRUCTURAL STEEL PLATE GIRDER DETAILS AND NOTES" FOR TYPE B DIAPHRAGM DETAILS.
  3. CONNECTION PLATES FOR TYPE B DIAPHRAGMS BETWEEN GIRDER 3 AND GIRDER 4 SHALL HAVE OVERSIZED BOLT HOLES. BOLTS FOR THAT DIAPHRAGM SHALL NOT BE TIGHTENED UNTIL AFTER PHASE III DECK CONCRETE HAS BEEN POURED. ALL BOLTS AND NUTS SHALL BE ADEQUATELY AND UNIFORMLY LUBRICATED PRIOR TO FINAL TIGHTENING. BOLTS AND NUTS NOT PROPERLY LUBRICATED SHALL BE CLEANED AND RELUBRICATED OR SHALL BE REMOVED AND REPLACED WITH NEW BOLTS AND NUTS AS DIRECTED BY THE ENGINEER. COST OF RELUBRICATION OR REPLACEMENT OF BOLTS AND NUTS SHALL BE AT THE CONTRACTOR'S EXPENSE.
  4. REFER TO SHEETS "WATERLINE ALIGNMENT" AND "WATERLINE DETAILS" FOR LOCATION AND SUPPORT DETAILS FOR THE WATER LINE.
  5. REFER TO SHEETS "UTILITY DUCT BANK DETAILS" & "UTILITY PLAN SHEET" FOR LOCATION AND SUPPORT DETAILS FOR THE UTILITY DUCT BANK.



PROJECT NAME: BENNINGTON	
PROJECT NUMBER: BRF 1000(16)	
FILE NAME: z88J087bdr_frame.dgn	PLOT DATE: 8/7/2014
PROJECT LEADER: R. HEBERT	DRAWN BY: S. MORGAN
DESIGNED BY: D. MYERS	CHECKED BY: R. HEBERT
FRAMING PLAN AND CROSS FRAME DETAILS	SHEET 39 OF 75