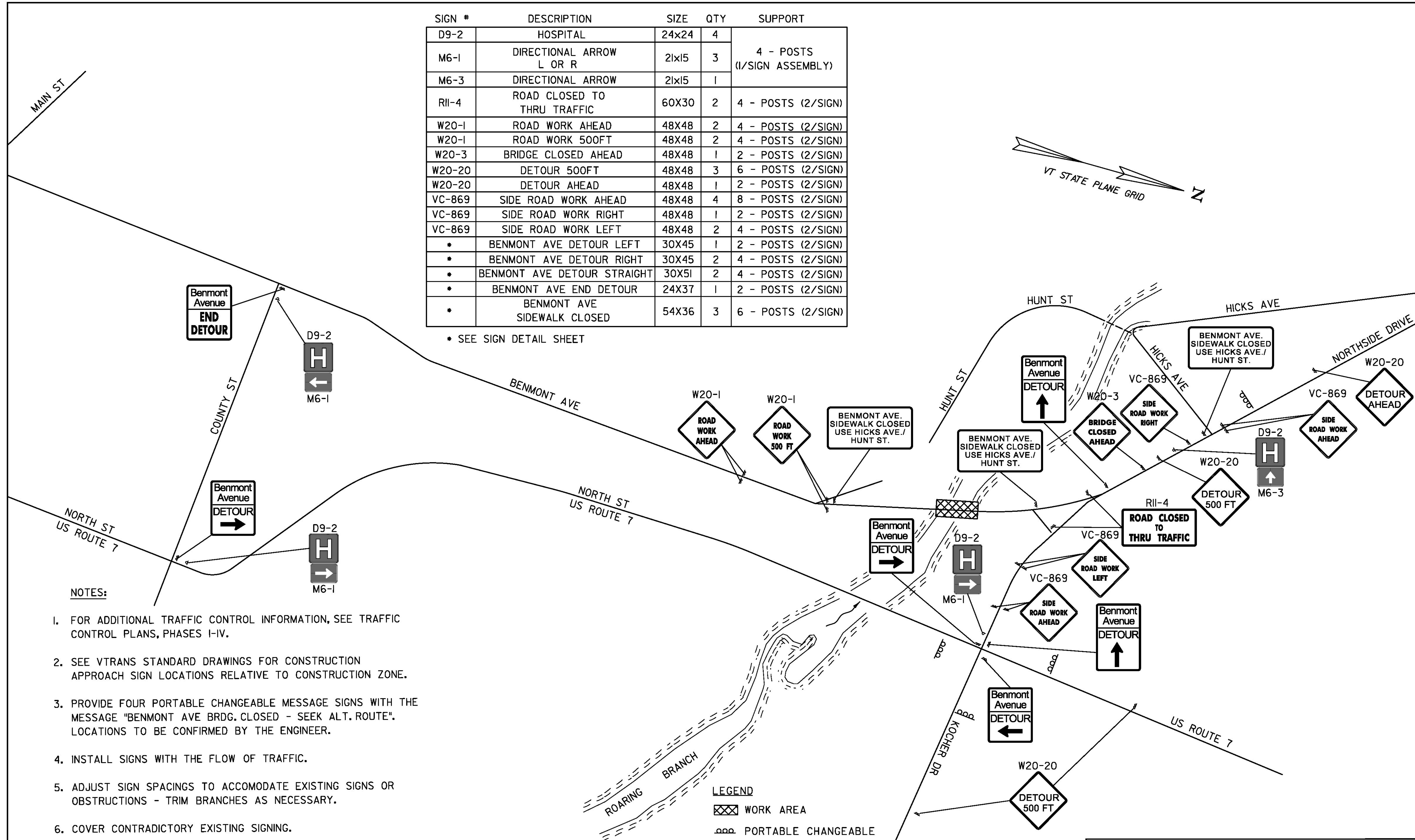
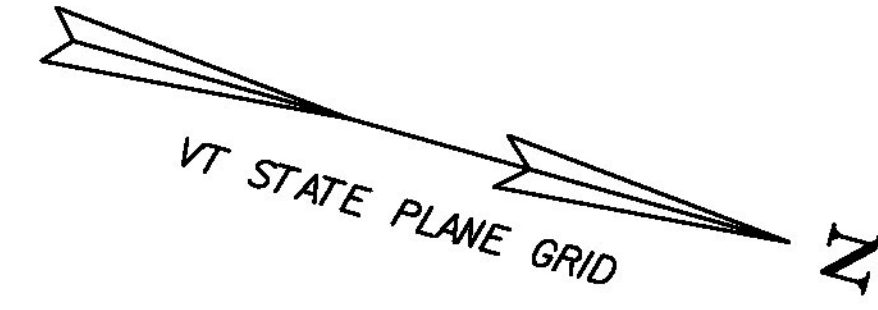


SIGN #	DESCRIPTION	SIZE	QTY	SUPPORT
D9-2	HOSPITAL	24x24	4	4 - POSTS (1/SIGN ASSEMBLY)
M6-1	DIRECTIONAL ARROW L OR R	21x15	3	
M6-3	DIRECTIONAL ARROW	21x15	1	
R11-4	ROAD CLOSED TO THRU TRAFFIC	60X30	2	4 - POSTS (2/SIGN)
W20-1	ROAD WORK AHEAD	48X48	2	4 - POSTS (2/SIGN)
W20-1	ROAD WORK 500FT	48X48	2	4 - POSTS (2/SIGN)
W20-3	BRIDGE CLOSED AHEAD	48X48	1	2 - POSTS (2/SIGN)
W20-20	DETOUR 500FT	48X48	3	6 - POSTS (2/SIGN)
W20-20	DETOUR AHEAD	48X48	1	2 - POSTS (2/SIGN)
VC-869	SIDE ROAD WORK AHEAD	48X48	4	8 - POSTS (2/SIGN)
VC-869	SIDE ROAD WORK RIGHT	48X48	1	2 - POSTS (2/SIGN)
VC-869	SIDE ROAD WORK LEFT	48X48	2	4 - POSTS (2/SIGN)
*	BENMONT AVE DETOUR LEFT	30X45	1	2 - POSTS (2/SIGN)
*	BENMONT AVE DETOUR RIGHT	30X45	2	4 - POSTS (2/SIGN)
*	BENMONT AVE DETOUR STRAIGHT	30X51	2	4 - POSTS (2/SIGN)
*	BENMONT AVE END DETOUR	24X37	1	2 - POSTS (2/SIGN)
*	BENMONT AVE SIDEWALK CLOSED	54X36	3	6 - POSTS (2/SIGN)

* SEE SIGN DETAIL SHEET



NOTES:

- FOR ADDITIONAL TRAFFIC CONTROL INFORMATION, SEE TRAFFIC CONTROL PLANS, PHASES I-IV.
- SEE VTRANS STANDARD DRAWINGS FOR CONSTRUCTION APPROACH SIGN LOCATIONS RELATIVE TO CONSTRUCTION ZONE.
- PROVIDE FOUR PORTABLE CHANGEABLE MESSAGE SIGNS WITH THE MESSAGE "BENMONT AVE BRDG. CLOSED - SEEK ALT. ROUTE". LOCATIONS TO BE CONFIRMED BY THE ENGINEER.
- INSTALL SIGNS WITH THE FLOW OF TRAFFIC.
- ADJUST SIGN SPACINGS TO ACCOMMODATE EXISTING SIGNS OR OBSTRUCTIONS - TRIM BRANCHES AS NECESSARY.
- COVER CONTRADICTORY EXISTING SIGNING.
- SEE SIGN DETAIL SHEET FOR BENMONT AVE DETOUR SIGNING DETAILS.

LEGEND
 [Hatched Box] WORK AREA
 [Dashed Line] PORTABLE CHANGEABLE MESSAGE SIGN

PROJECT NAME: BENNINGTON
 PROJECT NUMBER: BRF 1000(16)
 FILE NAME: z88j087bdr_tcpstgns.dgn
 PROJECT LEADER: R. HEBERT
 DESIGNED BY: D. BURHANS
 DETOUR SIGNING PLAN
 PLOT DATE: 8/7/2014
 DRAWN BY: A. GREENLAW
 CHECKED BY: D. BRYANT
 SHEET 24 OF 75