

GPS CONTROL POINTS

**B95004**  
 NORTH = 43470.73  
 EAST = 443429.60  
 ELEV. = 205.87

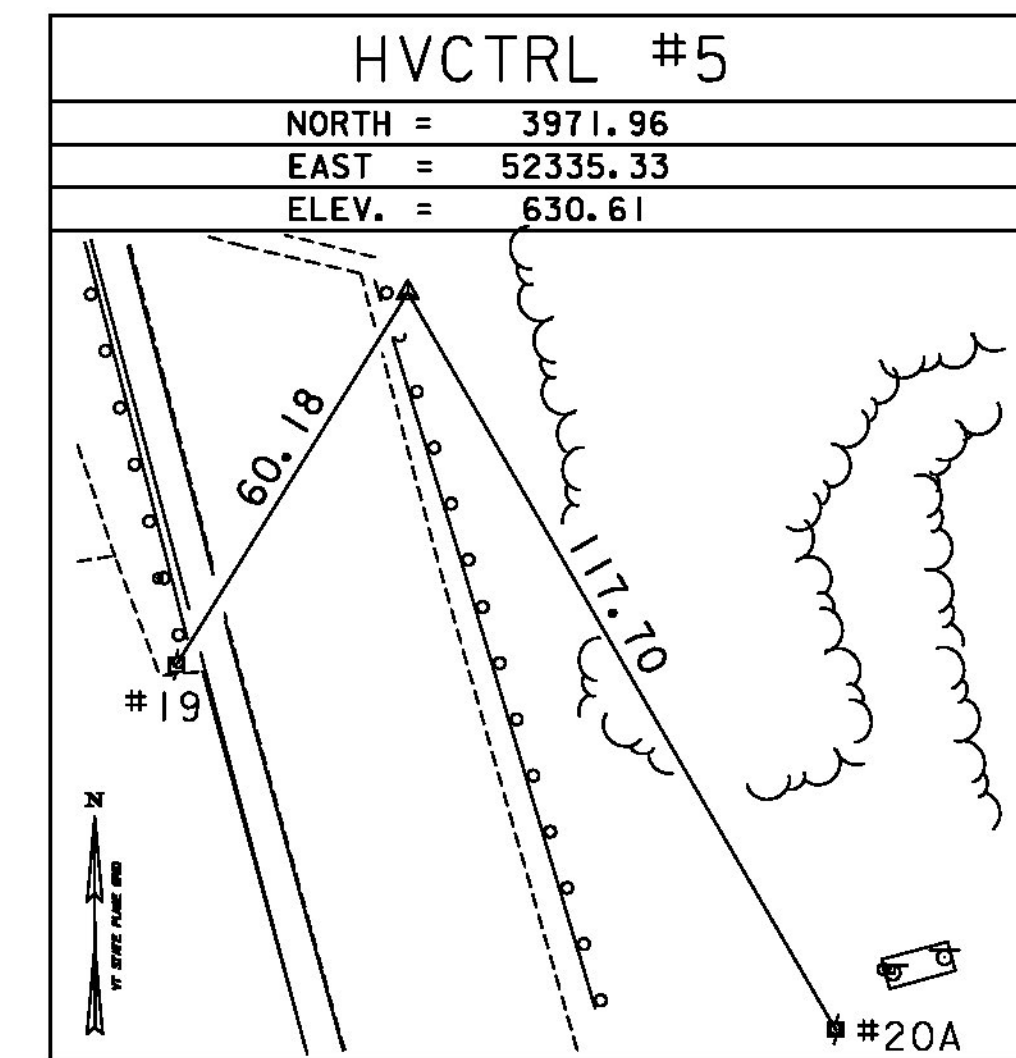
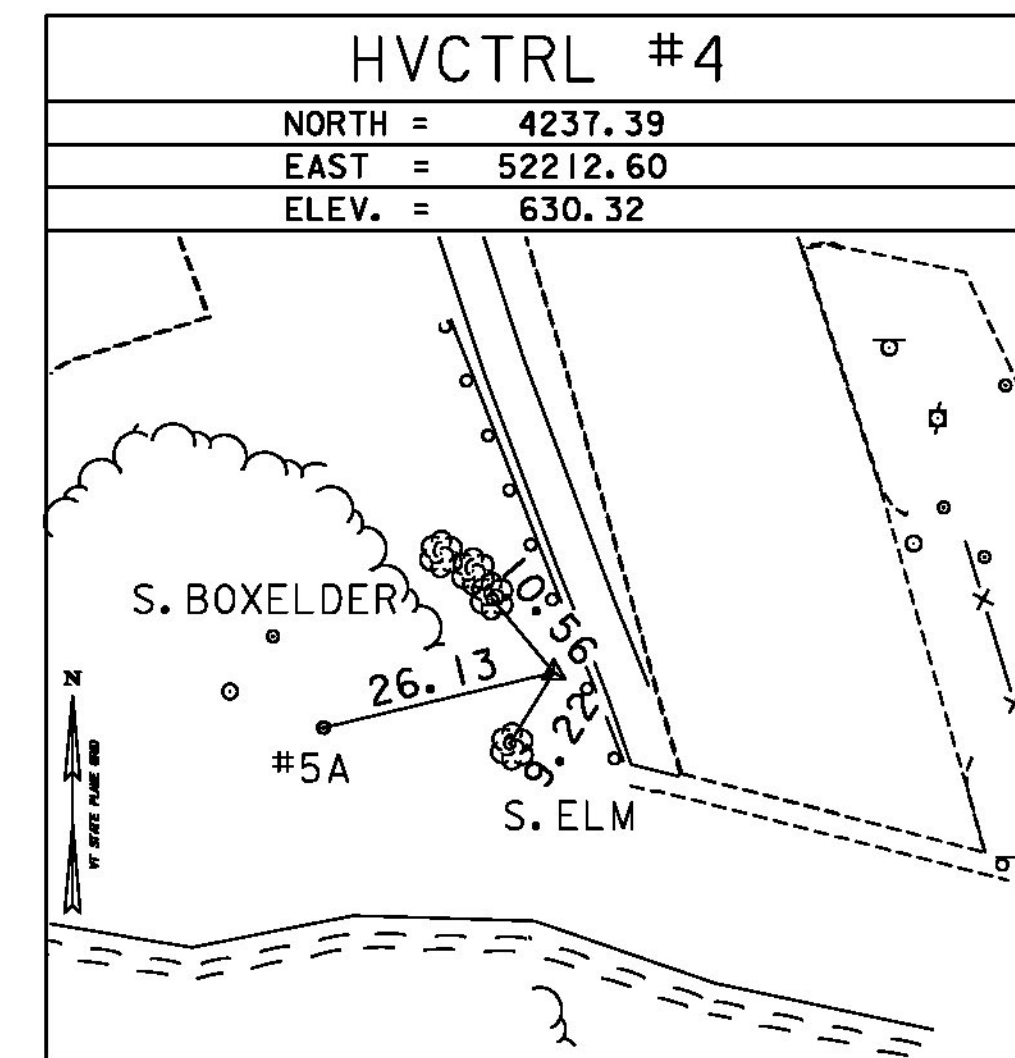
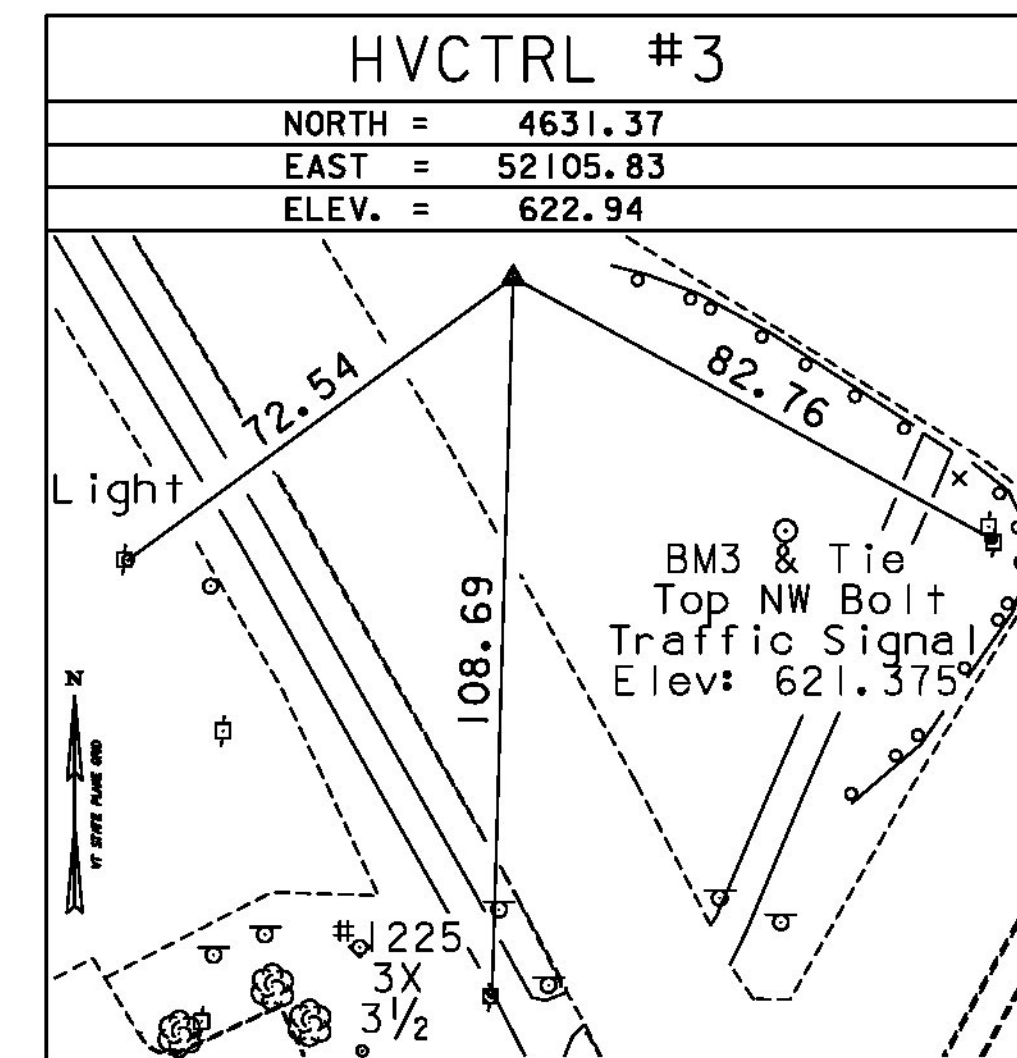
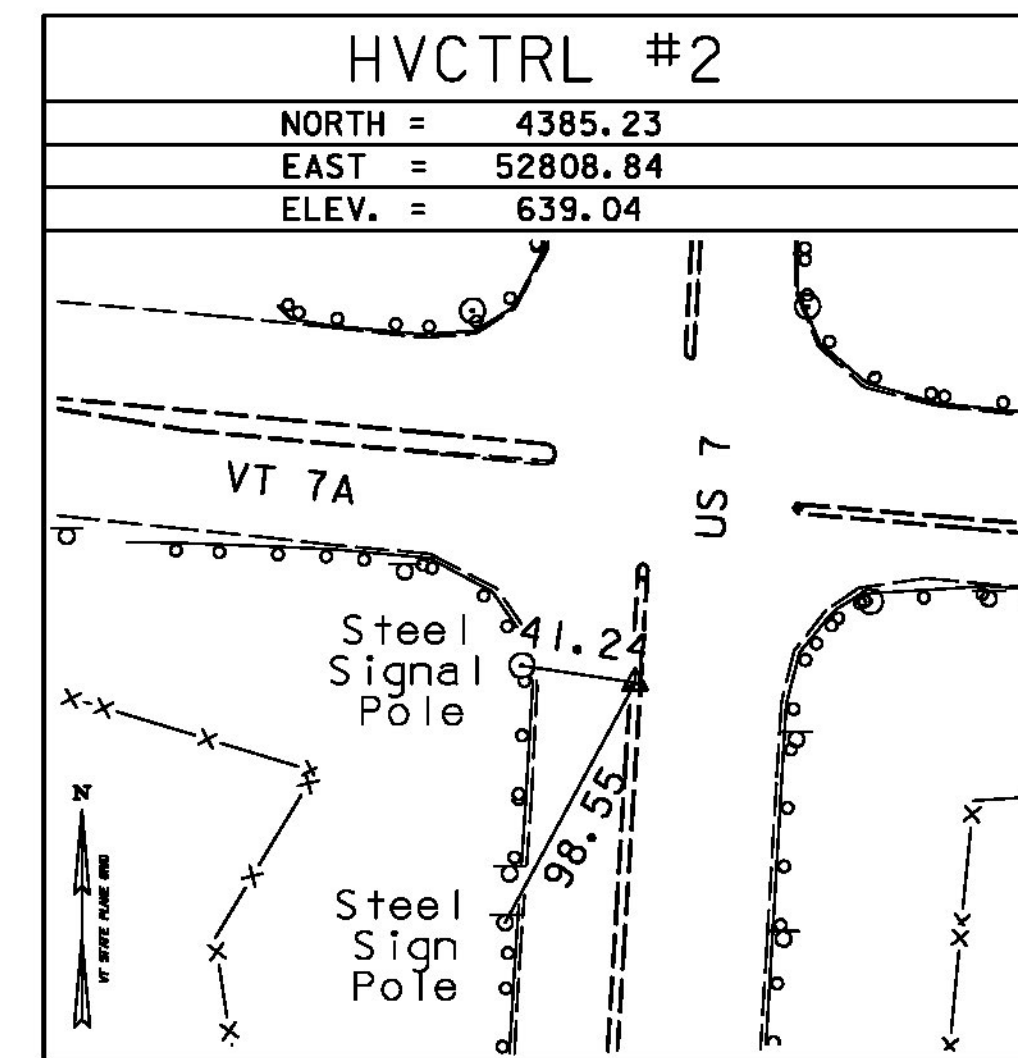
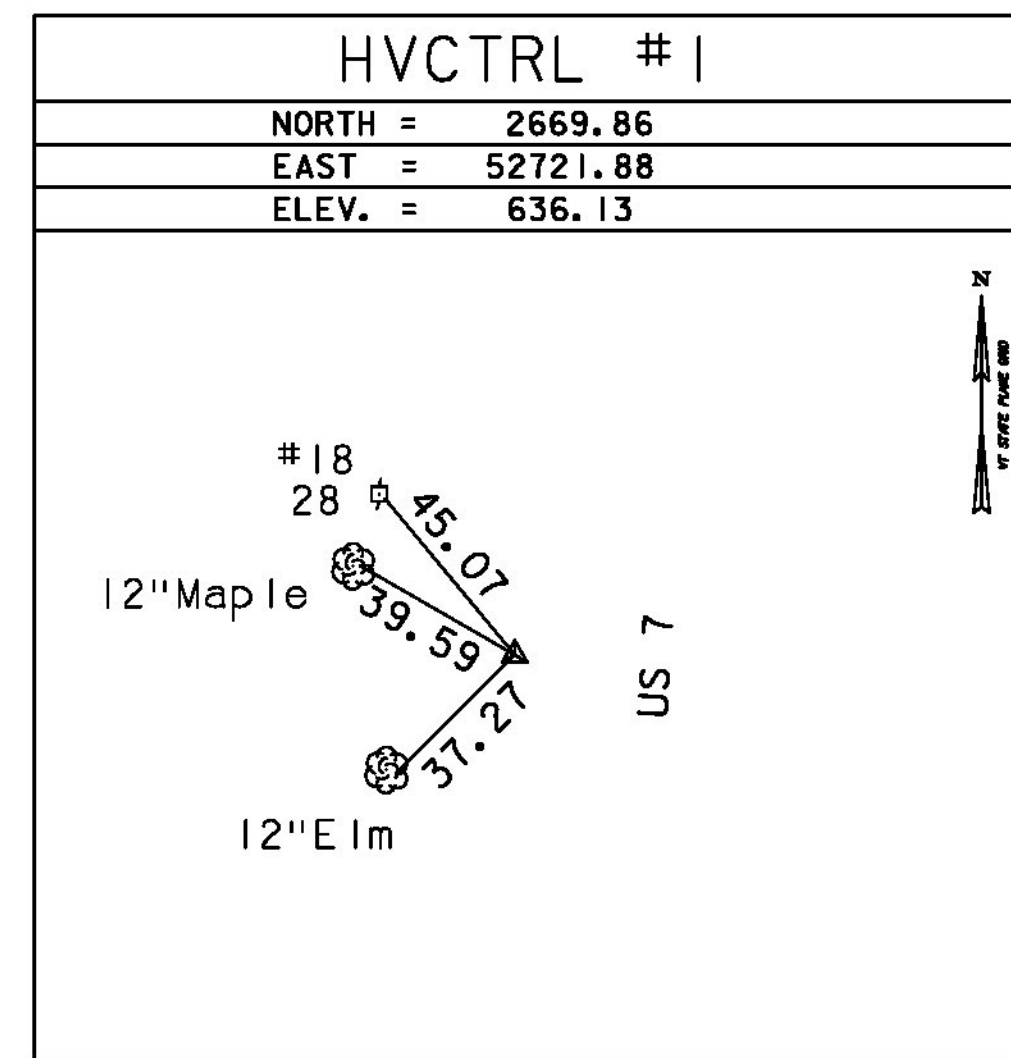
DESCRIBED BY VERMONT AGENCY OF TRANSPORTATION 1995 (CHR) GENERAL LOCATION, BENNINGTON, VT. TO REACH FROM THE INTERSECTION OF U.S.ROUTE 7 AND VT ROUTE 9 IN BENNINGTON GO NORTH ALONG U.S.ROUTE 7 FOR 0.4 MI(0.6 KM) TO THE INTERSECTION OF COUNTY STREET. TURN RIGHT AND GO EAST ALONG COUNTY STREET FOR 0.2 MI(0.3 KM) TO THE INTERSECTION OF PARK STREET. TURN LEFT AND GO NORTH ALONG PARK STREET FOR 0.3 MI(0.5 KM) TO THE SOUTH END OF THE PARK STREET BRIDGE OVER THE ROARING BRANCH AND THE MARK ON THE RIGHT IN THE TOP OF THE ABUTMENT AT THE SOUTHEAST CORNER OF THE BRIDGE. THE MARK IS 0.15 M (0.49 FT) SOUTH OF THE NORTH FACE OF THE ABUTMENT, 2.0 M (6.6 FT) EAST OF THE WEST FACE OF THE CURB, 0.45 M (1.48 FT) WEST OF THE EAST END OF THE ABUTMENT, AND ABOUT 0.2 M (0.7 FT) HIGHER THAN THE ROAD. NOTE, THIS MARK IS INTERVISIBLE WITH B95005

**B95005**  
 NORTH = 43020.12  
 EAST = 443399.56  
 ELEV. = 208.09

DESCRIBED BY VERMONT AGENCY OF TRANSPORTATION 1995 (CHR) GENERAL LOCATION, BENNINGTON, VT. TO REACH FROM THE INTERSECTION OF U.S.ROUTE 7 AND VT ROUTE 9 IN BENNINGTON GO NORTH ALONG U.S.ROUTE 7 FOR 0.4 MI(0.6 KM) TO THE INTERSECTION OF COUNTY STREET. TURN RIGHT AND GO EAST ALONG COUNTY STREET FOR 0.2 MI(0.3 KM) TO THE INTERSECTION OF PARK STREET. TURN LEFT AND GO NORTH ALONG PARK STREET FOR 0.1 MI(0.2 KM) TO THE MARK ON THE RIGHT IN A LAWN, JUST SOUTH OF THE MOST SOUTHERLY ENTRANCE DRIVE TO MOUNT ANTHONY HIGH SCHOOL. THE MARK IS SET 20 CM BELOW GROUND SURFACE IN THE TOP OF A 30 CM DIAMETER CONCRETE MONUMENT ANCHORED TO ROCK AT A DEPTH OF 1M (3.3 FT). IT IS 5.8 M (19.0 FT) EAST OF AND ABOUT LEVEL WITH THE CENTERLINE OF PARK STREET, 13.3 M (43.6 FT) SOUTH OF THE CENTERLINE OF THE MOST SOUTHERLY ENTRANCE DRIVE TO THE HIGH SCHOOL, 25.0 M (82.0 FT) WEST OF A 60 CM MAPLE, 30.3 M (99.4 FT) WEST OF THE JUNCTION OF PAVED AND CONCRETE SIDEWALKS, AND 9.2 M (30.2 FT) NORTH OF POLE NO.2/18 AND A FIBERGLASS WITNESS POST. NOTE, THIS MARK IS INTERVISIBLE WITH B95004 AND THE BENNINGTON BATTLE MONUMENT.

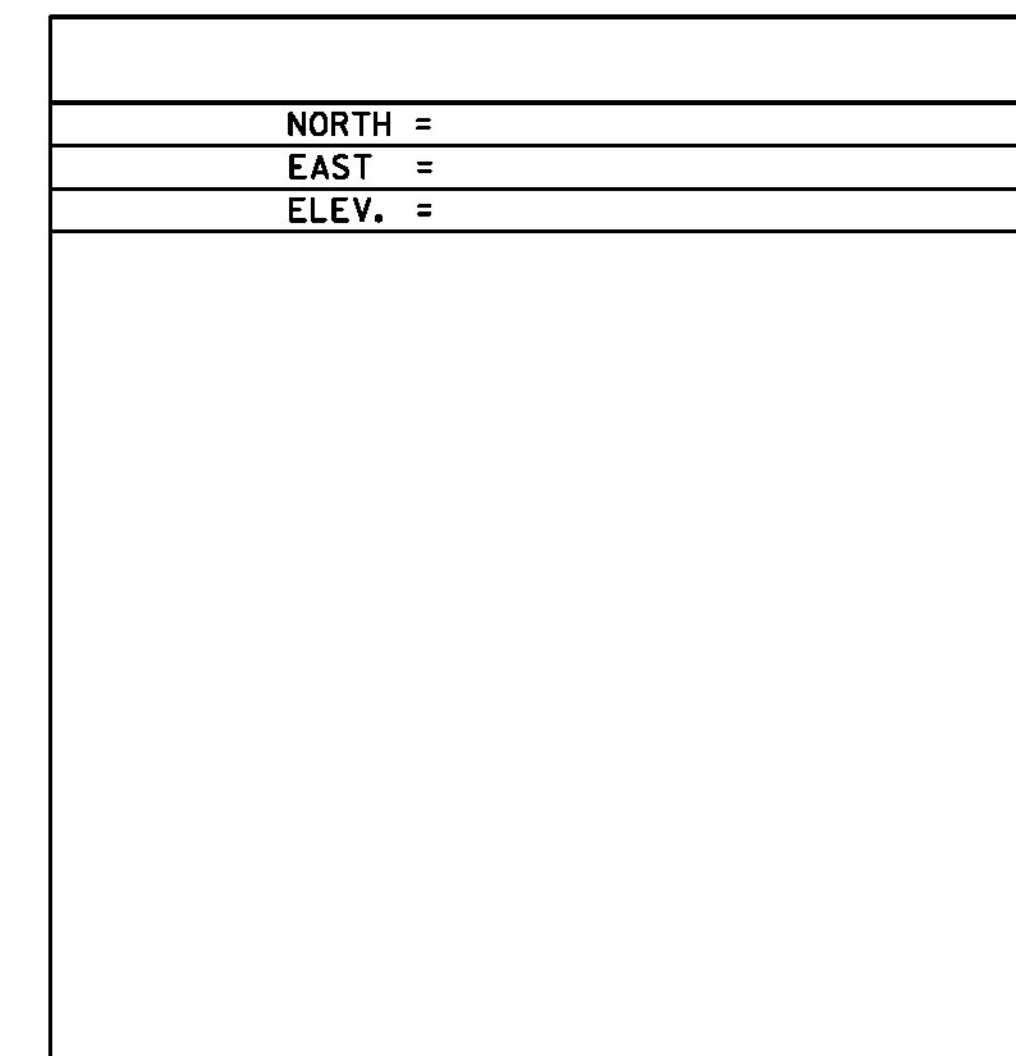
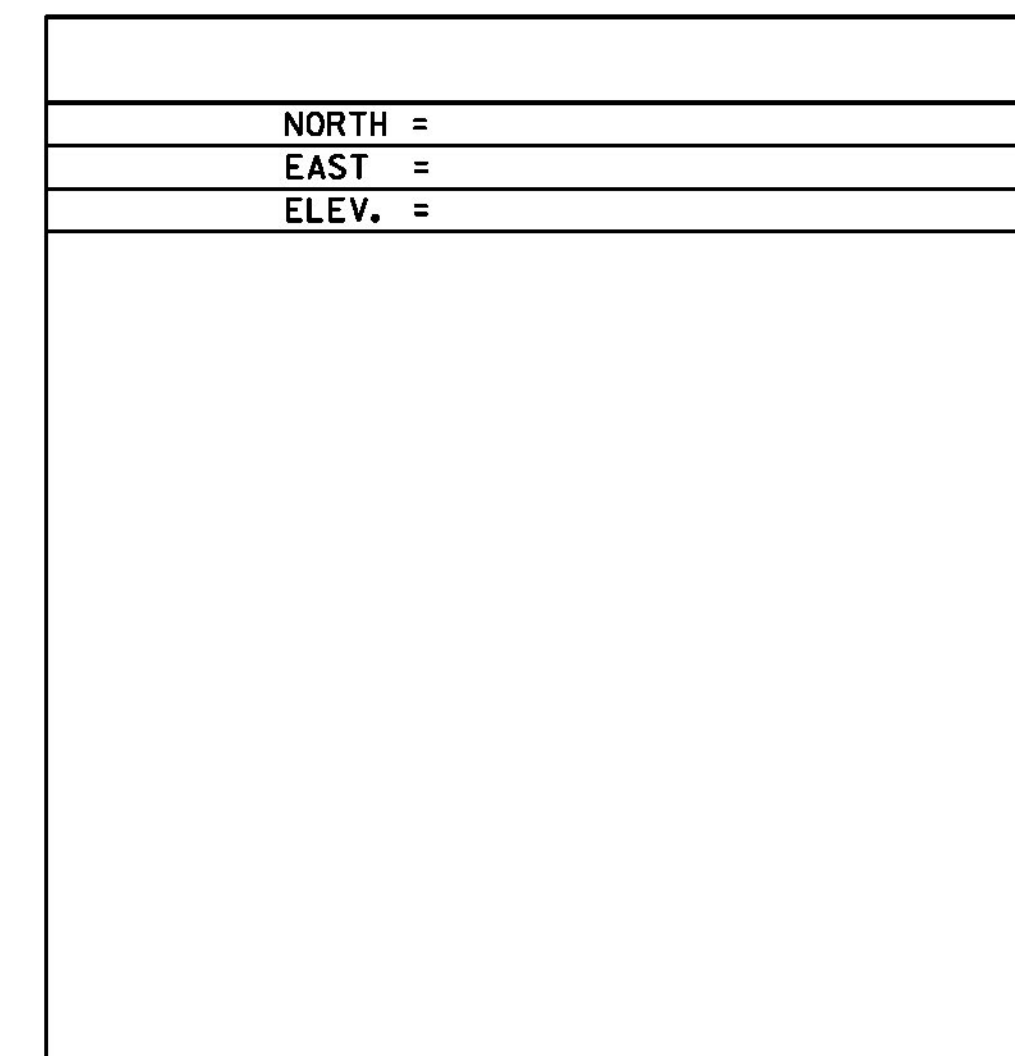
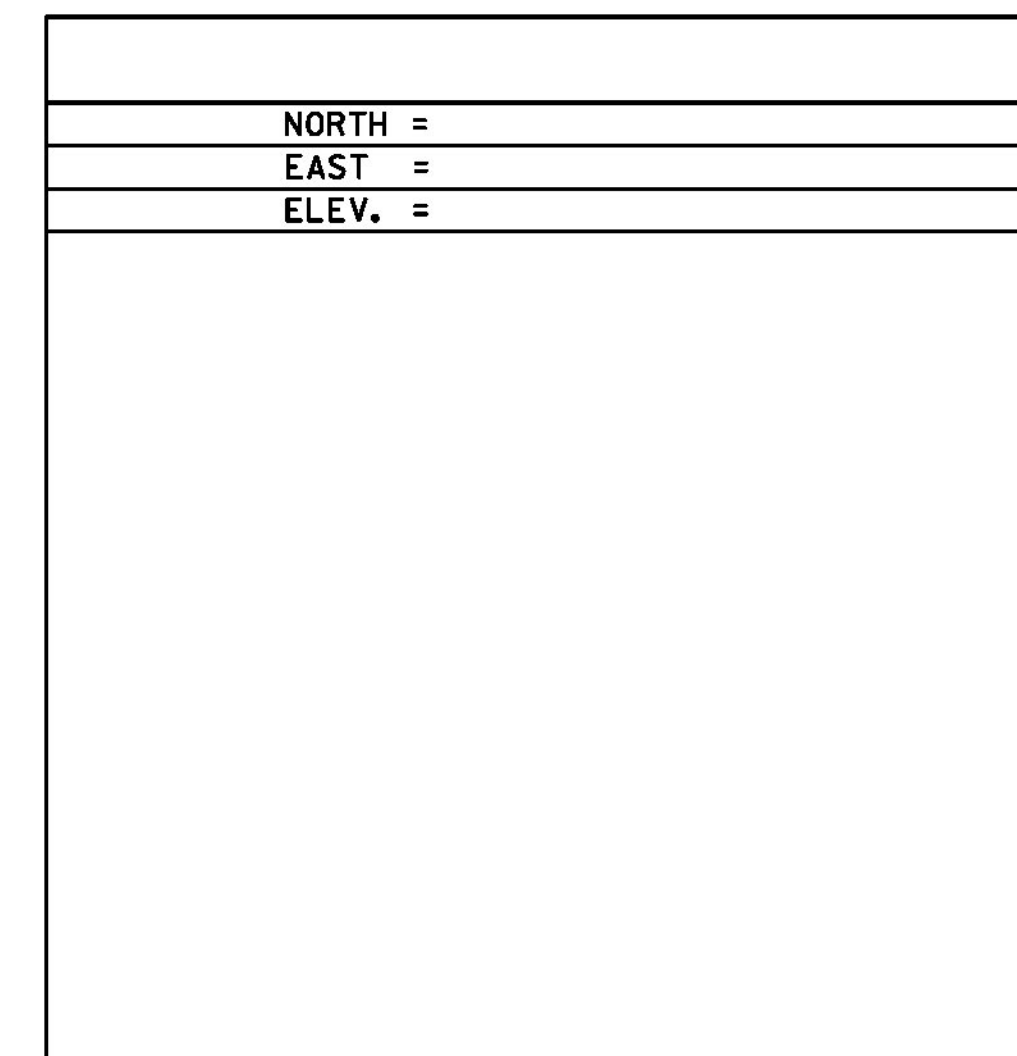
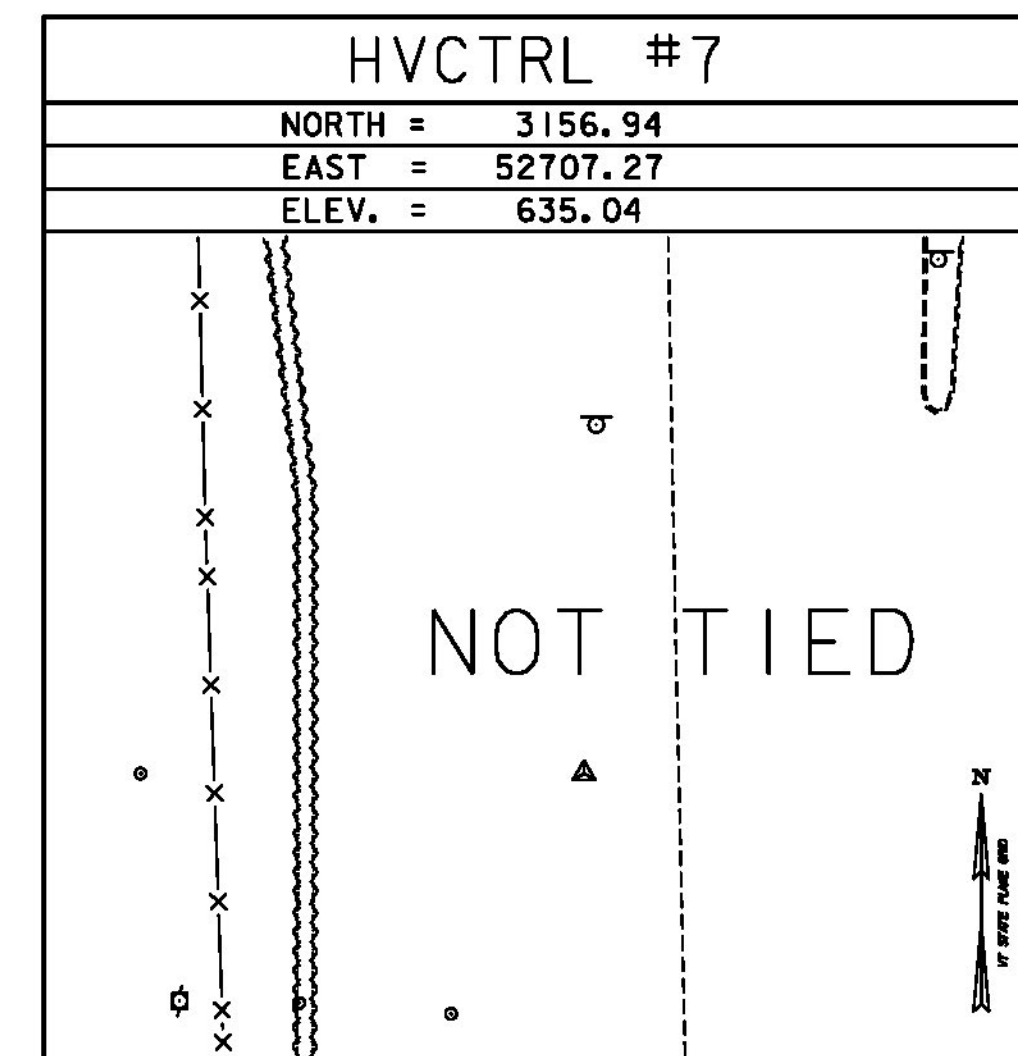
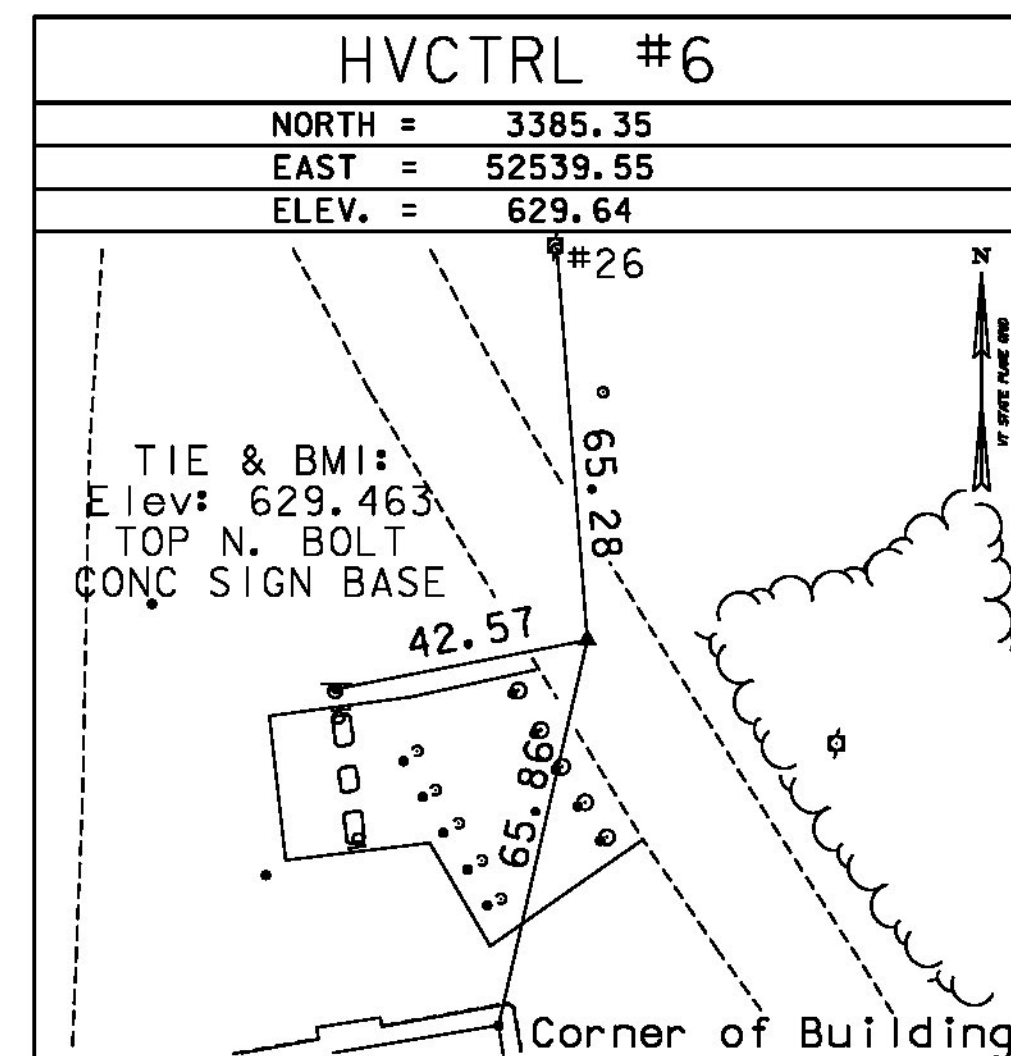
\* TO ALLOW THE STATE PLANE COORDINATES TO FIT THE AGENCY DESIGN PLANE, SUBTRACT 40,000.00 FROM THE NORTHINGS AND 400,000.00 FROM THE EASTINGS

TRAVERSE TIES



\* Main Traverse Completed 3/16/98 by L.Orvis P.C. & R.Bullock

TRAVERSE TIES



DATUM	
VERTICAL	NAVD 88
HORIZONTAL	NAD 83 (92)
ADJUSTMENT	COMPASS

PROJECT NAME:	BENNINGTON	PLOT DATE:	8/7/2014
PROJECT NUMBER:	BRF 1000(16)	DRAWN BY:	R. BULLOCK
FILE NAME:	z88j087bdr_t1.dgn	DESIGNED BY:	VTRANS
PROJECT LEADER:	R. HEBERT	CHECKED BY:	VTRANS
TIE SHEET		SHEET 12	OF 75